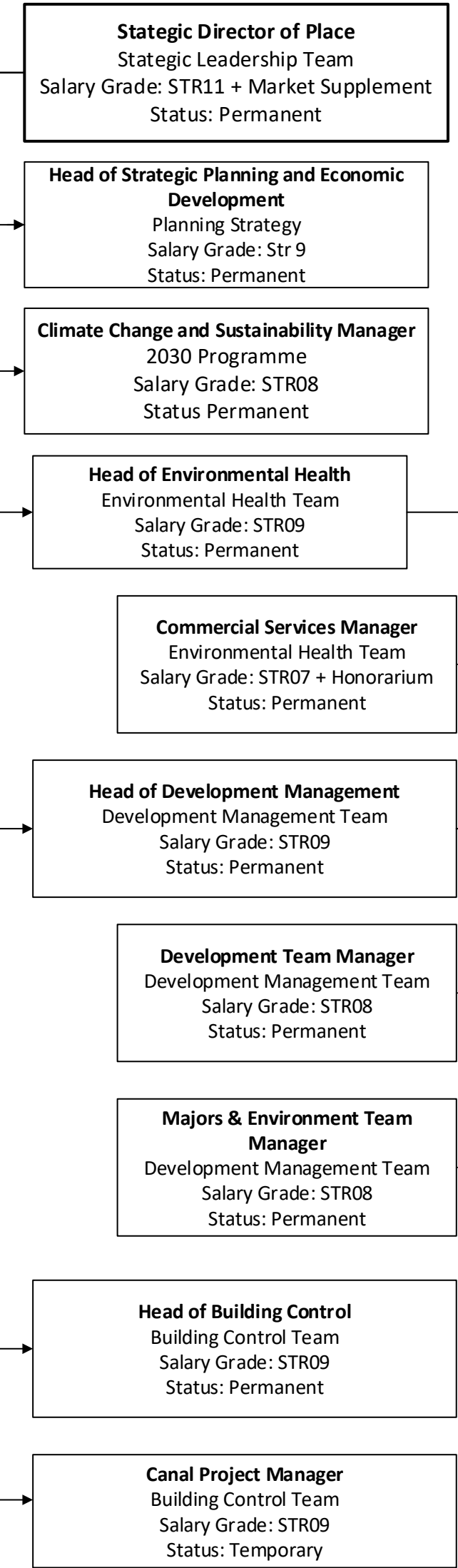
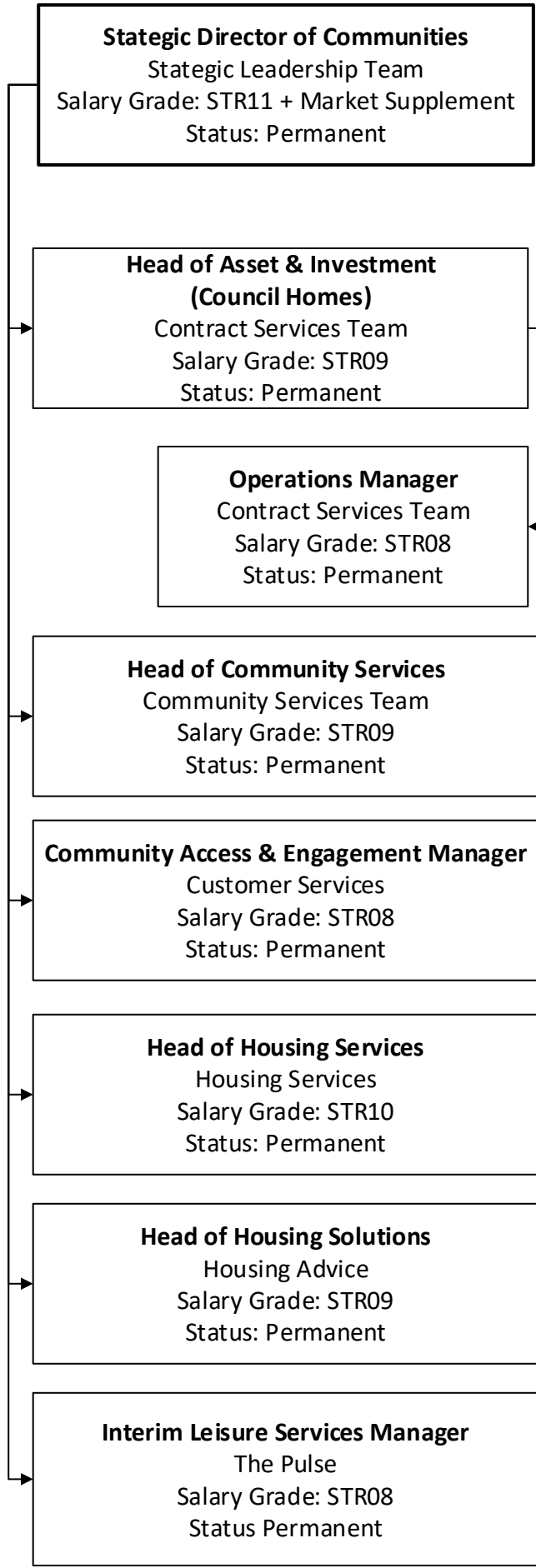


**Chief Executive**  
 Statagic Leadership Team  
 Salary Grade: STR12  
 Status: Permanent

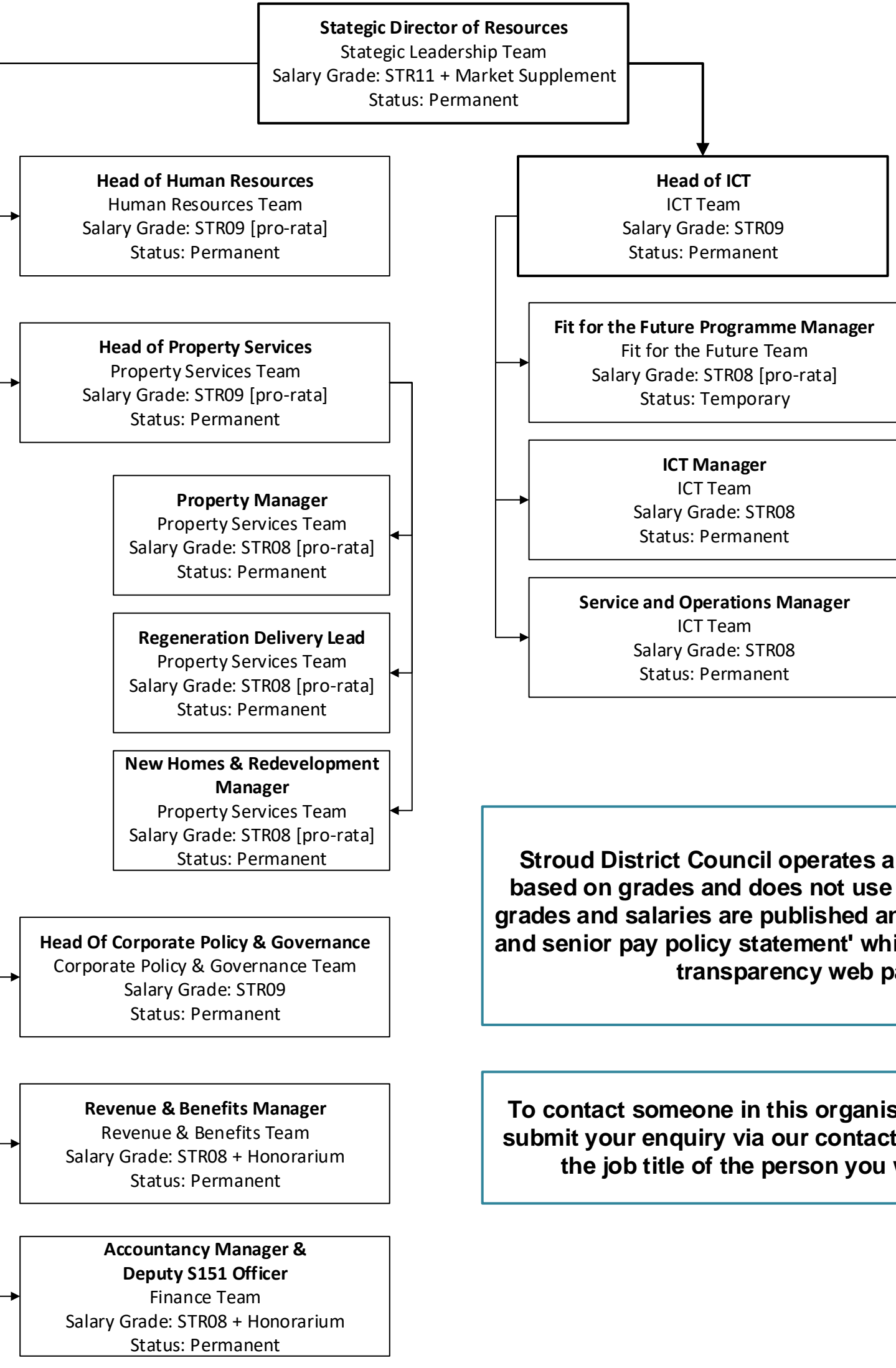
**Place Directorate**



**Communities Directorate**



**Resources Directorate**



**Stroud District Council operates a spot salary system based on grades and does not use pay brackets. These grades and salaries are published annually in our 'fair pay and senior pay policy statement' which is available on our transparency web pages.**

**To contact someone in this organisational chart, please submit your enquiry via our contact us page and include the job title of the person you want to contact.**