

Sheltered Modernisation News

A quarterly newsletter for sheltered housing residents

Issue 4 • January 2018



Work begins to bring a fresh new look to Sherborne House

Residents at Sherborne House, in Stonehouse are eagerly awaiting the modernisation work which is about to start, transforming their scheme's communal areas.

Residents have been involved in the overall design and layout of the communal lounge, even down to fine details such as how many chairs and tables will be required and how these should be laid out in the room. The communal areas are

part of the tenants' living environment and we believe that it is important that they are involved in the design, ensuring that they will further enjoy their day to day activities and interests.

Tenants have also selected the colour scheme for the lounge. The 'mood board' options were presented to them by James Frost and Verity Timmins from Buckingham Interiors earlier this month.

Continued on page 2 >>>

<<< **Continued from page 1**

All tenants who attended the coffee morning were given the opportunity to vote for their preferred colour scheme from the range on offer, with the majority voting for the 'Cotswold' mood board which ranges from warm neutral tones to calming greens. We hope this will bring a feeling of calm and relaxation for residents using the communal lounge. The tenants were encouraged and supported through this process by Councillor Jenny Miles and Ian Allan, Tenant Representative.

Improvements will also be made to the entrance lobby, communal corridors and external pathways. This will improve ease of access for residents, and increase the amount of light to create lighter and brighter access to the living accommodation.

"I like how we all worked together."

Linda

"We are very excited to be involved in choosing the colours."

Tina



The team are currently in the process of selecting a contractor to undertake the modernisation improvements. During February, the appointed contractor will undertake site visits to programme the work and place orders for materials before starting on site in spring this year. We will be working closely with them to minimise the daily impact to residents and will be keeping everyone up to date with regular communication from the team.

"It looks fresh and restful."

Kit

New laundry for residents of Dryleaze Court

The new laundry, for the residents living in the nearby Dryleaze Court bungalows in Wotton-under-Edge, is now complete. Residents were invited to start using the new laundry this month, which means that we have been able to fully close the main building at Dryleaze Court.

The Dryleaze Court site is currently being marketed for sale and the proceeds of the sale will be reinvested in the modernisation programme with the first new scheme being built at Tanners Piece in Nailsworth. (See article on right).

New homes at Tanners Piece, Nailsworth

You may remember reading in the last newsletter that we secured planning permission to build eleven new apartments for people aged over 60 in Nailsworth. The new properties will meet the changing needs of our older generation and provide independent living in a safe and secure environment.

We are currently in the process of sourcing a contractor and hope to be able to start constructing the new homes by summer this year, which means they will be ready for new residents in 2019.

Local Updates

Wotton-Under-Edge

We are currently marketing **Dryleaze Court** for sale. We'll let you know when a buyer is found.

Nailsworth

We are still on track to close **Ringfield Close** early this year, and we plan to delay the sale so that contractors can use the site for parking etc during the construction of the new apartments at **Tanners Piece**. This decision comes after listening to feedback from local residents about the plans ahead.

Dursley

This month we met with residents at **Cambridge House**, to talk to them about the plans to close their scheme and to detail the support we will provide during their move. Our Tenant Liaison Officer, Chris, will now undertake individual meetings with residents to tailor our support package with their needs. All residents at Cambridge House were issued with a 'Moving Home Support Pack' which contained lots of useful information about moving home.

Cam

In early 2019 we will start to move residents from **Glebelands** in Cam.

How are we doing?

We have been publishing the **Sheltered Modernisation News** for a year and we are keen to get your feedback. We would be very interested to find out if the information we are providing is useful or whether there is anything else you would like us to include.



Fill in our quick survey (overleaf) and return it by **Wednesday 28th February 2018**.

In return, one name will be randomly drawn to **WIN a £25 shopping voucher**

Turn over for more information on the modernisation programme



How are we doing survey?

Name:

Address:

.....

.....

Telephone:

• Do you read the Sheltered Modernisation News (SMN)?

Yes No Sometimes

• How useful is the information in the SMN?

Very Good Average Poor

• Do you feel the SMN keeps you up-to-date with the modernisation plans?

Yes No Sometimes

• Is the format of the SMN easy to read and understand?

Yes No

How could we improve?

.....

.....

.....

.....

.....

.....

.....

Please either hand your feedback to your Site Officer, or send your feedback to New Homes & Regeneration Team, Stroud District Council, Stroud, Glos, GL5 4EB by **Wednesday 28th February 2018** for your chance to win.

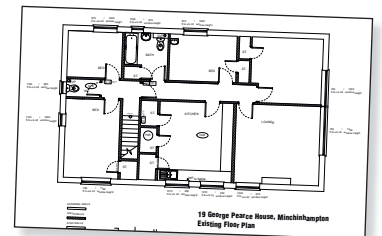


When will my scheme be modernised?

In the next newsletter, which will be issued in the Spring, we hope to provide you with a programme of sheltered schemes which have been identified for modernisation from now until 2020. If you live in one of the schemes which will be modernised during this timeframe, then the project team will be in touch with you. We will arrange group meetings to discuss any changes to the scheme before they are worked up in detail. As you can see from the resident involvement at Sherborne House, your feedback and views are very important to us when we consider how the scheme should look now and in the future.

Breathing new life into former scheme manager properties

We are pleased to tell you that good progress has been made with the conversion



of four former scheme manager properties. They are being converted into eight new flats and will be ready for new tenants in February.

McDonnell Price Roofing Ltd have been carrying out the work on all four sites at George Pearce House in Minchinhampton, Grange View in Stroud, Malvern Gardens in Cashes Green and Hamfallow Court near Berkeley.

NEXT ISSUE OUT IN APRIL 2018