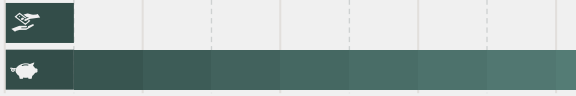
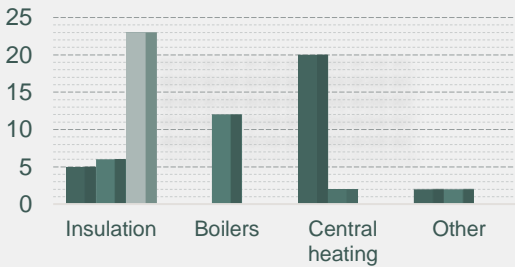


Stroud is an exemplar district in terms of green action, becoming the first council in Europe to become carbon neutral for emissions in its direct control. The wider picture for carbon reduction is difficult with old Victorian townhouses in the towns and stone cottages in rural areas that are notoriously difficult to make energy efficient, yet are a core part of the 'best place to live in Britain' appeal. The district has areas of deprivation around Cam and Dursley, with Warm and Well's care package distribution a vital support to fuel poor residents through the pandemic.

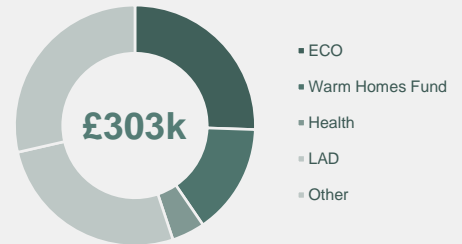
For every £1 invested in Warm and Well, Stroud residents benefit from support and funding worth **£8.35**



72 energy-saving home improvements

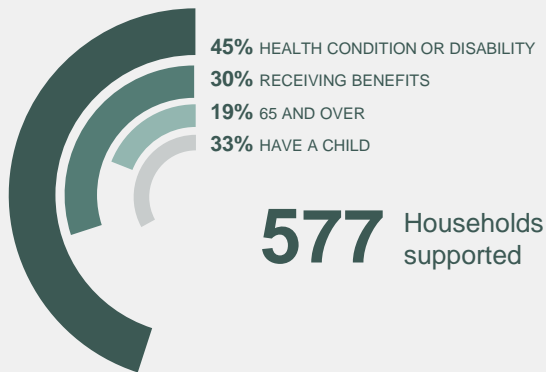


Additional Funding Accessed



Lifetime savings of
1,657
tonnes CO₂

The equivalent of making
360 Stroud homes
carbon neutral for a year



783 Vulnerability referrals
Some households receive multiple referrals

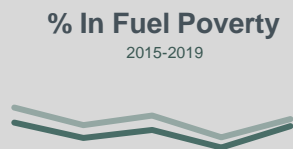
51 Covid-safe home and garden visits

260 Homes referred for emergency top-ups issued

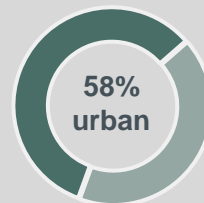
£42 Average top-up per household

Stroud

5,340
of 53,642 households considered 'fuel poor'



10.6% of South West
10.2% of Stroud



£1,012
average annual fuel bill

- Severn Wye has been engaging with the local able-to-pay market through online presentations via Transition Stroud with the local CAN's and supporting them in retrofit advice and events.
- The new Energy Aware Communities project is further looking to tackling fuel poverty and poor health outcomes through community working alongside the Local Districts District Hubs Strategy delivery.
- Berkeley Vale insulation has continued to build on the great success story of the park of previous years improving health outcomes in the area, we will look to move onto other sites and replicate this great impact, informed by CCG health data.