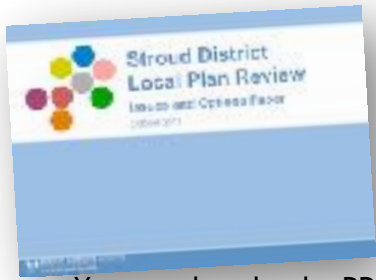


Stroud District Local Plan Review Issues and Options



Stroud District Council is starting the process of reviewing the current Local Plan. This consultation is seeking views about the range of issues that the next Local Plan will need to tackle, and options for addressing them. This includes the identification of potential areas for growth and development. We ask a series of questions throughout the consultation document (each of which is numbered). Please refer to the question number and/or topic in your response, where relevant.

You can download a PDF or an editable electronic copy of this form from our website www.stroud.gov.uk/localplanreview. You will also find the main consultation document on this web page, as well as some supporting material and further reading. **Please note: there is a separate form for you to fill out if your comment relates specifically to a site submission / proposed alternative site (Local Plan Review: Call for Sites).**

The consultation closes on Tuesday 5th December 2017. Please email completed electronic responses to local.plan@stroud.gov.uk or post paper copies to **Local Plan Review, The Planning Strategy Team, Stroud District Council, Ebley Mill, Westward Road, Stroud, GL5 4UB**. Should you have any queries, the Planning Strategy Team can be contacted on 01453 754143.

Consultation response form PART A

Your details

Thank you for taking part. Please fill out your personal information in PART A. Your contact details will not be made public and won't be used for any purpose other than this consultation. We will not accept anonymous responses. Your comments may be summarised when we report the findings of this consultation.

Your name

(title) <input type="text"/>	name: <input type="text"/>
------------------------------	----------------------------

Your company name or organisation (if applicable)

Your address (optional)

Your email address *

Your phone number (optional)

If you are acting on behalf of a client, please supply the following details:

Your client's name

(title): <input type="text"/>	name: <input type="text"/>
-------------------------------	----------------------------

Your client's company or organisation (if applicable)

Keeping you updated:

Would you like to be notified of future progress on the Local Plan review? (* we will do this via email)

- i) When the findings from this consultation are made public **Yes please**

- ii) The next formal round of public consultation *Yes please*
- iii) No further contact please

Consultation response form PART B:

If you have several different comments to make, you may wish to use a separate PART B sheet for each one (although you do not have to). If you use multiple PART B sheets, please make sure you fill in your name on each of them (you only have to fill out PART A once, as long as it is clearly attached to your PART B sheets when you submit the forms to us).

Your name

Your organisation or
company

Your client's name/
organisation

(if applicable)

The consultation is seeking views about whether the big issues identified within this paper are the right things to focus on and what options exist for tackling them. Are there other issues, options or opportunities that have been missed? **Please note: there is a separate form for you to fill out if your comment relates specifically to a site submission / proposed alternative site (download a copy of the sites form at www.stroud.gov.uk/localplanreview).**

We ask a series of questions (highlighted in pink boxes) throughout the consultation paper. Each of the questions is numbered. Please can you reference the question number(s) and/or the topic here:

Question number: 2.3a

Please use this box to set out your comments:

These comments relate to Oakridge Lynch:

1. There is VERY little affordable housing.
2. The ability of retired people to downsize or find accommodation to suit reduced mobility is reducing continuously. Over the last 10 years the number of bungalows converted to larger 2 storey houses or replaced is 7. Of the two attempts to build a new bungalow one was approved and one rejected (outside Building Line).
3. Due to the tight Building Line new housing has only been infill.
4. I believe the limited housing available in the village has caused rentals and prices to increase more than area averages.
5. The above limitations to the village size and changes in shopping trends (to supermarkets and online) mean the village shop as a business is marginal and under threat of closure.



Consultation response form PART B:

If you have several different comments to make, you may wish to use a separate PART B sheet for each one (although you do not have to). If you use multiple PART B sheets, please make sure you fill in your name on each of them (you only have to fill out PART A once, as long as it is clearly attached to your PART B sheets when you submit the forms to us).

Your name

Your organisation or
company

Your client's name/
organisation

(if applicable)



The consultation is seeking views about whether the big issues identified within this paper are the right things to focus on and what options exist for tackling them. Are there other issues, options or opportunities that have been missed? *Please note: there is a separate form for you to fill out if your comment relates specifically to a site submission / proposed alternative site (download a copy of the sites form at www.stroud.gov.uk/localplanreview).*

We ask a series of questions (highlighted in pink boxes) throughout the consultation paper. Each of the questions is numbered. Please can you reference the question number(s) and/or the topic here:

Question number: 2.3b

Please use this box to set out your comments:

These comments relate to Oakridge Lynch:

Yes



Consultation response form PART B:

If you have several different comments to make, you may wish to use a separate PART B sheet for each one (although you do not have to). If you use multiple PART B sheets, please make sure you fill in your name on each of them (you only have to fill out PART A once, as long as it is clearly attached to your PART B sheets when you submit the forms to us).

Your name

Your organisation or
company

Your client's name/
organisation

(if applicable)



The consultation is seeking views about whether the big issues identified within this paper are the right things to focus on and what options exist for tackling them. Are there other issues, options or opportunities that have been missed? *Please note: there is a separate form for you to fill out if your comment relates specifically to a site submission / proposed alternative site (download a copy of the sites form at www.stroud.gov.uk/localplanreview).*

We ask a series of questions (highlighted in pink boxes) throughout the consultation paper. Each of the questions is numbered. Please can you reference the question number(s) and/or the topic here:

Question number: 3.5a

Please use this box to set out your comments:

Option 1: Seems the worst of all worlds. Could be re-stated as “Let’s continue as before and change the rules whenever.”

Option 2: This seems to aim to take a balanced approach and has the flexibility to take into account the changing world around us.

Option 3: Recipe for disaster in my opinion. “Blank Cheque” for developers.

Option 4: Please include consideration of infrastructure in Option 2.



Consultation response form PART B:

If you have several different comments to make, you may wish to use a separate PART B sheet for each one (although you do not have to). If you use multiple PART B sheets, please make sure you fill in your name on each of them (you only have to fill out PART A once, as long as it is clearly attached to your PART B sheets when you submit the forms to us).

Your name

Your organisation or
company

Your client's name/
organisation

(if applicable)

The consultation is seeking views about whether the big issues identified within this paper are the right things to focus on and what options exist for tackling them. Are there other issues, options or opportunities that have been missed? *Please note: there is a separate form for you to fill out if your comment relates specifically to a site submission / proposed alternative site (download a copy of the sites form at www.stroud.gov.uk/localplanreview).*

We ask a series of questions (highlighted in pink boxes) throughout the consultation paper. Each of the questions is numbered. Please can you reference the question number(s) and/or the topic here:

Question number: 3.5b

Please use this box to set out your comments:

These comments relate to Oakridge Lynch:

Moving the existing boundary to include the area edged in green (star in centre) to include the field behind The Birches and Fair View Farm buildings would make the boundary a more natural one with roads on each side. Fair View Farm is in a general state of disrepair.





Consultation response form PART B:

If you have several different comments to make, you may wish to use a separate PART B sheet for each one (although you do not have to). If you use multiple PART B sheets, please make sure you fill in your name on each of them (you only have to fill out PART A once, as long as it is clearly attached to your PART B sheets when you submit the forms to us).

Your name

Your organisation or
company

Your client's name/
organisation

(if applicable)



The consultation is seeking views about whether the big issues identified within this paper are the right things to focus on and what options exist for tackling them. Are there other issues, options or opportunities that have been missed? *Please note: there is a separate form for you to fill out if your comment relates specifically to a site submission / proposed alternative site (download a copy of the sites form at www.stroud.gov.uk/localplanreview).*

We ask a series of questions (highlighted in pink boxes) throughout the consultation paper. Each of the questions is numbered. Please can you reference the question number(s) and/or the topic here:

Question number: 3.6

Please use this box to set out your comments:

These comments relate to Oakridge Lynch:

1. I support the Area designated "OAK A" which the local Ward had also identified some years ago (Roger Budgen will confirm).
2. I suggest the addition of OAK B (bounded in green with star) as a further stage of development when the land becomes available.
3. THE VILLAGE HAS POOR ROAD ACCESS WITH THE MAIN ROUTE IN SINGLE TRACK FOR A SIGNIFICANT PART. WITHOUT THIS BEING IMPROVED SUCH DEVELOPMENTS WOULD CAUSE SIGNIFICANT TRAFFIC CONGESTION.

