

# Stroud Open Space and Green Infrastructure Study



## Cam and Dursley Cluster Sub Area Analysis Report (Part 2 of 2)

Final June 2019



Ecology | Green Space | Arboiculture | GIS

Unit 2 The Old Estate Yard | North Stoke Lane  
Upton Cheyney | Bristol | BS30 6ND

info@ethosep.co.uk | 01179328203

www.ethosep.co.uk



## Contents

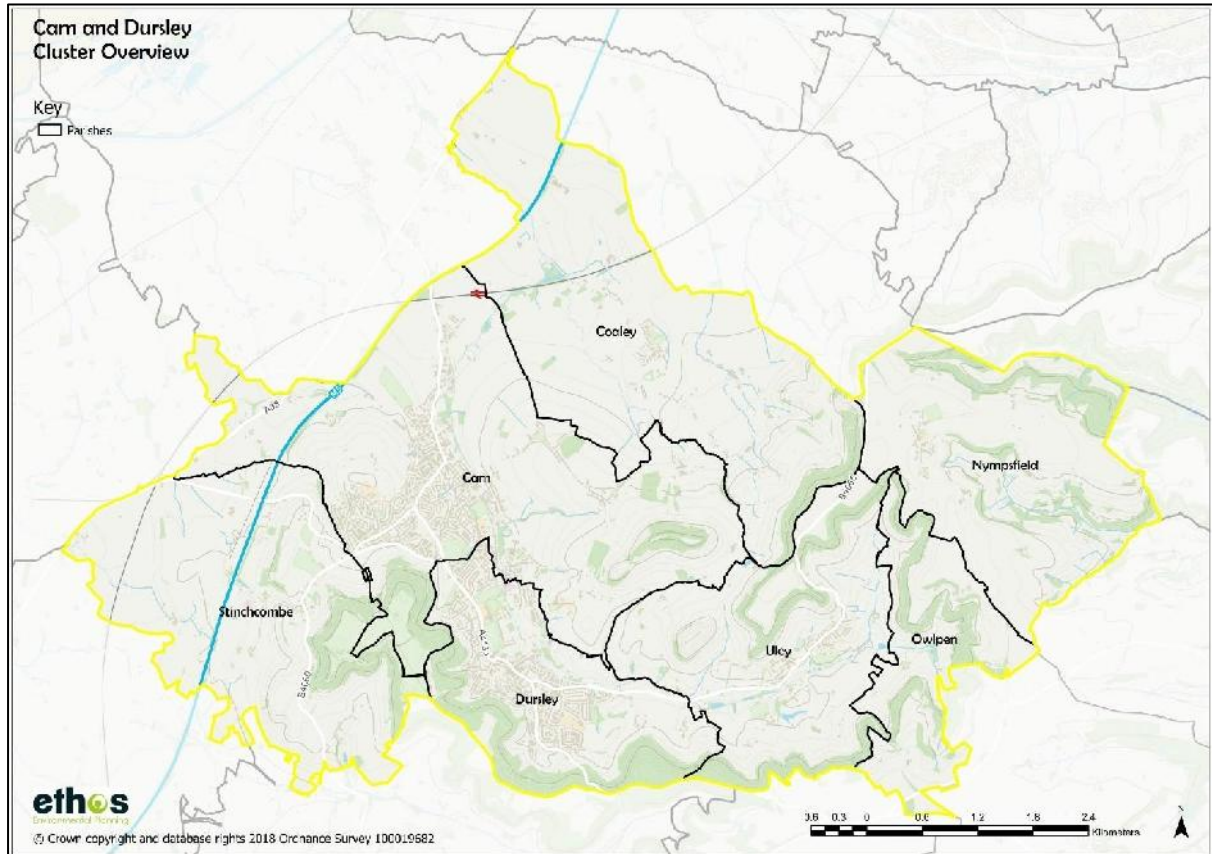
## Page no

1.	Geographical Area and Population	2
2.	Existing Provision of Open Space and GI	3-10
3.	Analysis of existing quantity of open space and GI	11-13
4.	Analysis of existing access to open space and GI	13-22
5.	Open Space and GI Quality Assessment	23-35
6.	Future need for open space and GI corridors and opportunities	35-37
7.	Open Space and GI - Summary of priorities for the area	38-39

## 1.0 Geographical area and population

The Cam and Dursley sub area comprises the Parishes of Cam, Coaley, Dursley, Nympsfield, Owlpen, Stinchcombe and Uley, as shown in figure 1. The population of this area is 19,159 (ONS mid-year estimate 2017).

Figure 1 Cam and Dursley cluster



The Local Plan Review Emerging Strategy (2018) provides a summary of this area as follows:

Cam and Dursley adjoin each other and together make up the District's second largest population (after the Stroud Valleys). This large conurbation sits nestled at the foot of the Cotswold hills (the Cotswolds AONB covers the southern half of this parish cluster area) and adjoins the Severn Vale. The Cotswold Way runs through the historic market town centre of Dursley. Cam has a smaller village centre. Both communities historically were centres for cloth manufacturing. Other industries later boomed in Dursley town, including engine manufacture, furniture production and pin-making. The area has suffered from a degree of deprivation that has impacted on the local communities, but regeneration and expansion in more recent years is delivering new employment and improved facilities and services within the area. The area benefits from a station on the main line to Bristol and good accessibility to the south of the District. Outside of Cam and Dursley, the rural hinterland contains attractive villages which look to the main settlement for their key services.

## **2.0 Existing provision of open space and GI**

Figure 2 shows the existing open spaces that have been mapped and included within the Cam and Dursley cluster. The map is intended to be indicative – maps by Parish (appendix 1) and a GIS database has been provided to the Council.

Figure 3 provides an overview of the GI network/assets within the Cam and Dursley cluster, and figures 4 to 8 provide a breakdown of the GI by theme, which includes landscape considerations.

Figure 2 Overview of open space in the Cam and Dursley cluster

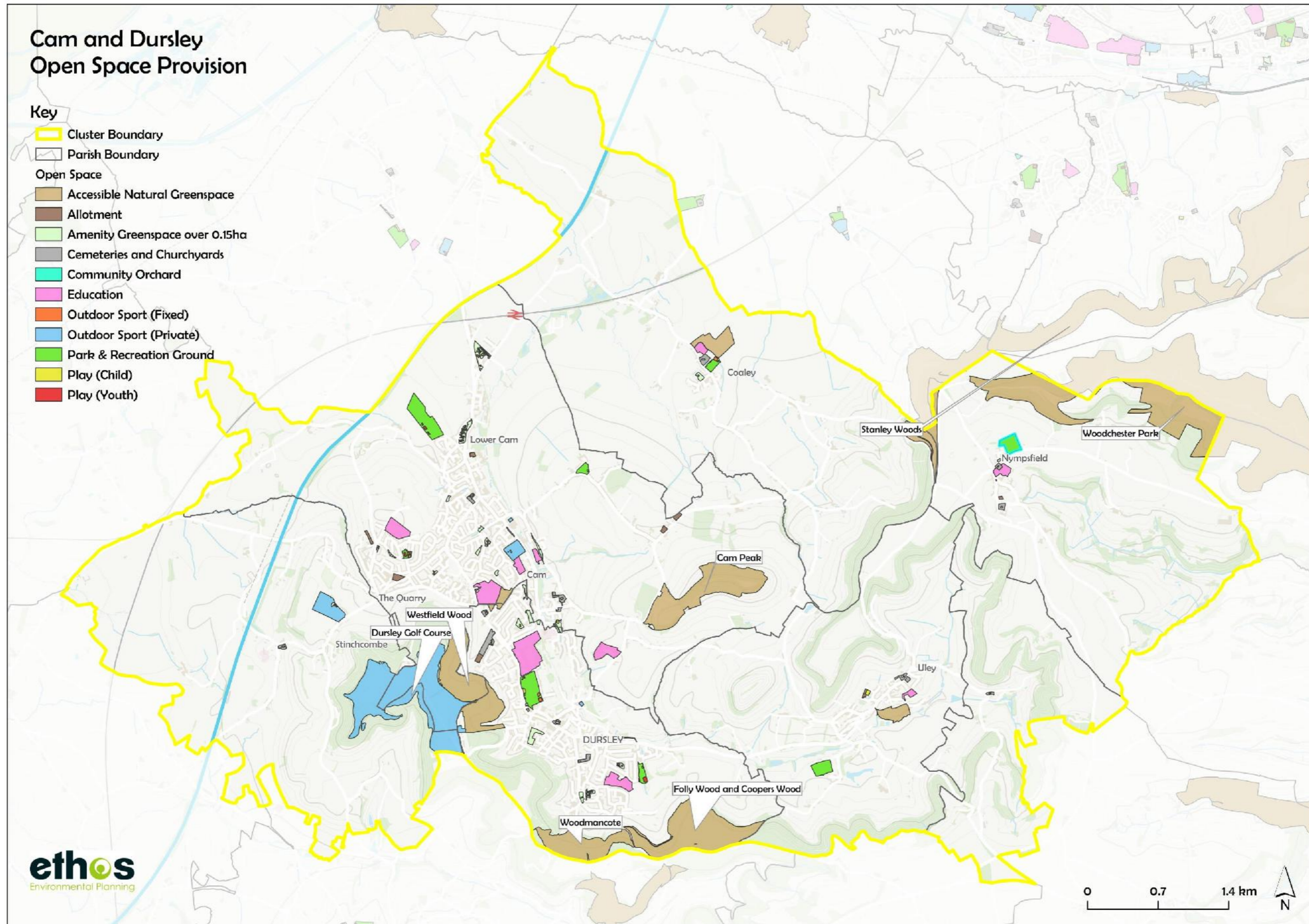


Figure 3 Overview of GI in the Cam and Dursley cluster

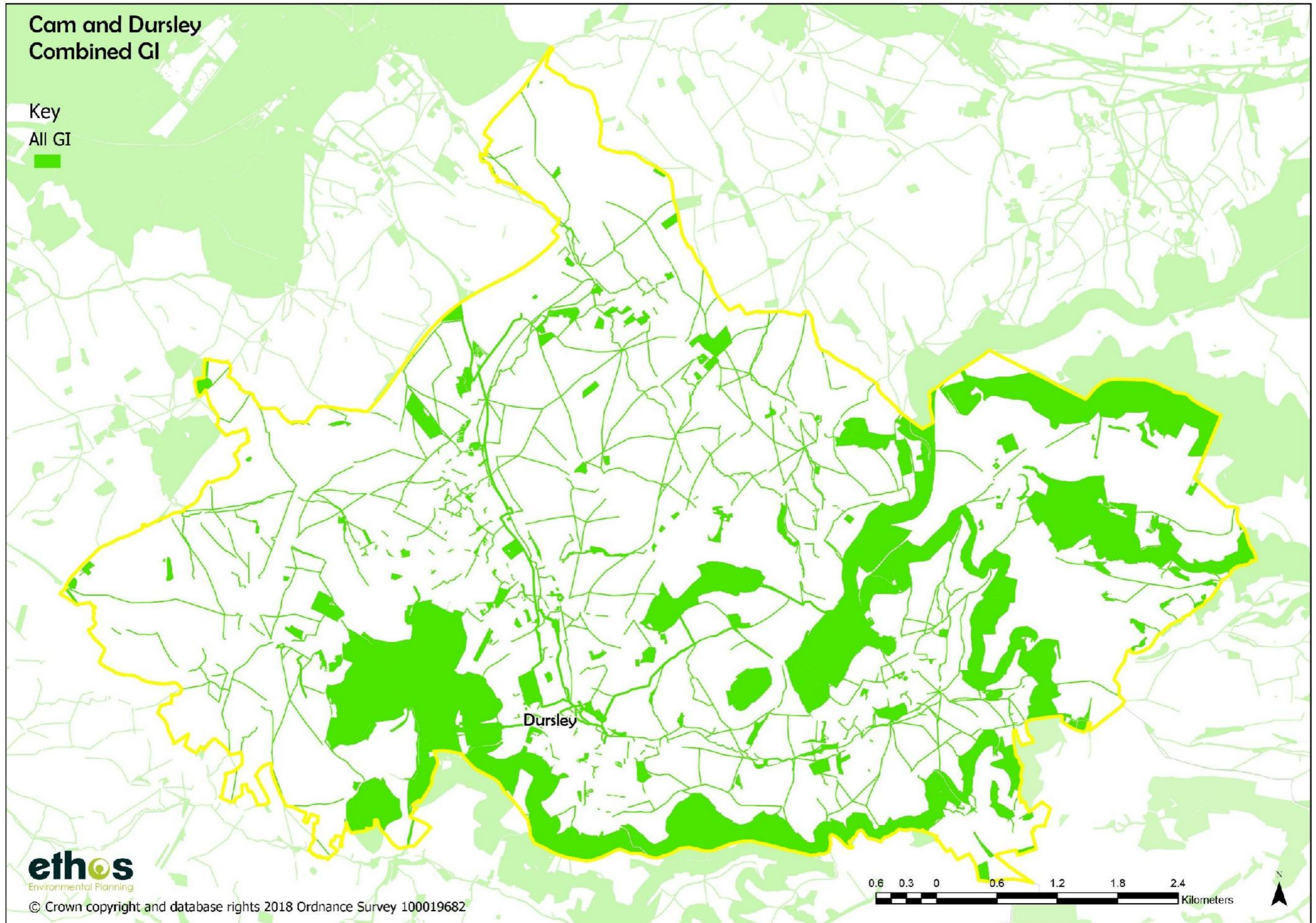


Figure 4 Mapping of GI Network by Theme: Wildlife: Designated Sites

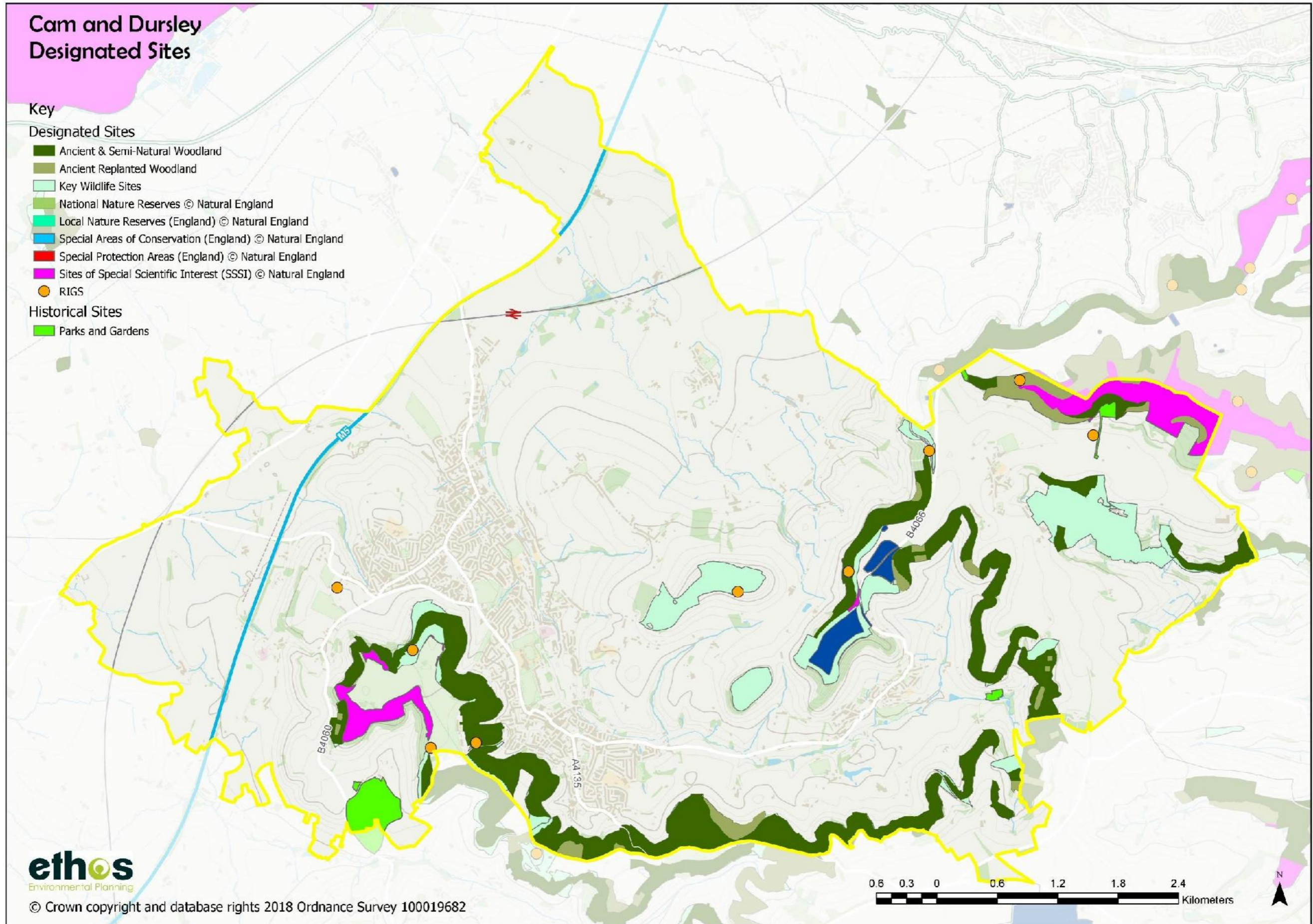


Figure 5 Mapping of GI Network by Theme: Wildlife: Priority Habitats, Nature Improvement Areas (NIAs) and Strategic Nature Areas (SNAs)

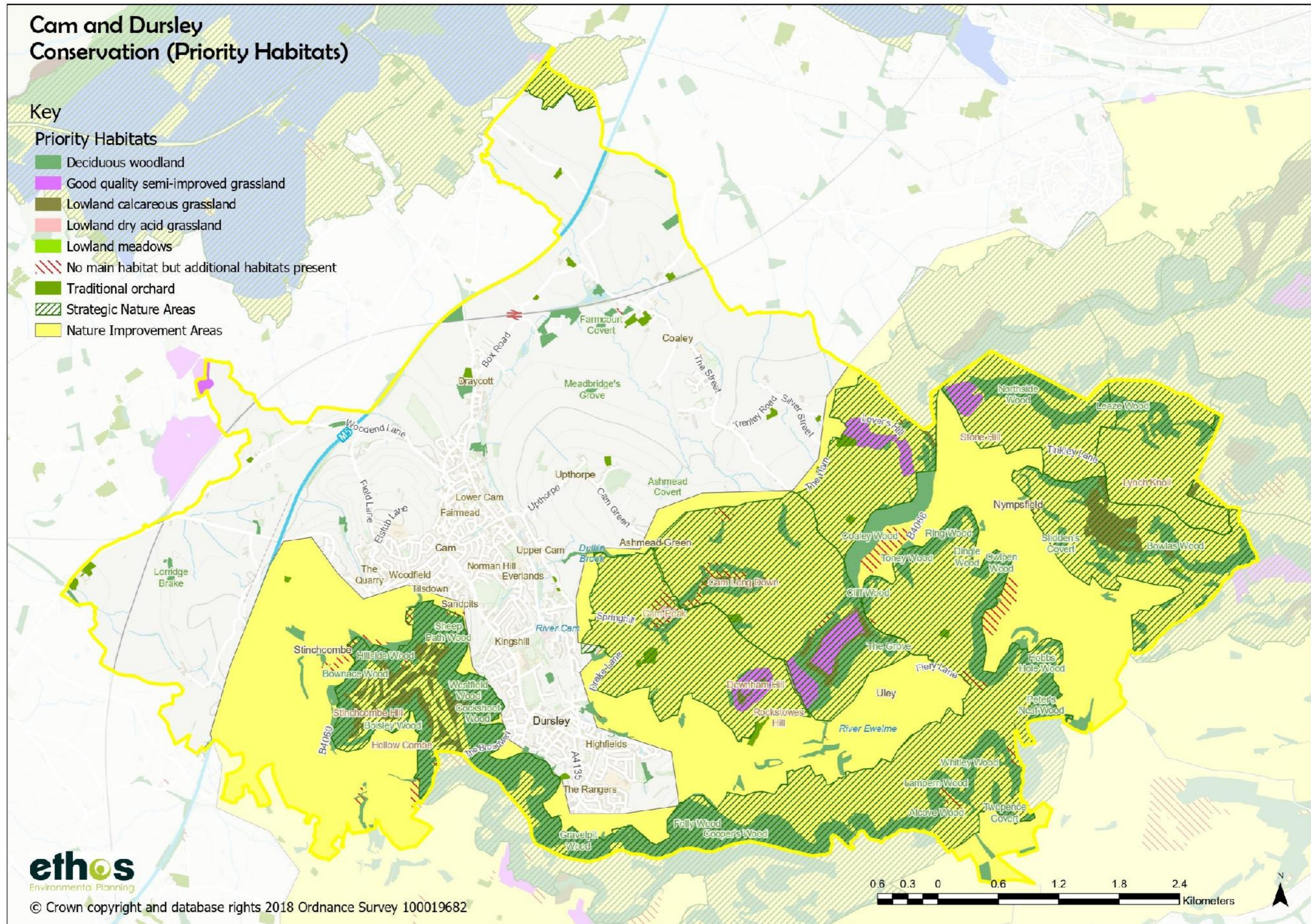




Figure 6 Mapping of GI Network by Theme: Wildlife: National Character Areas (NCAs) and Landscape Character Areas (LCAs)

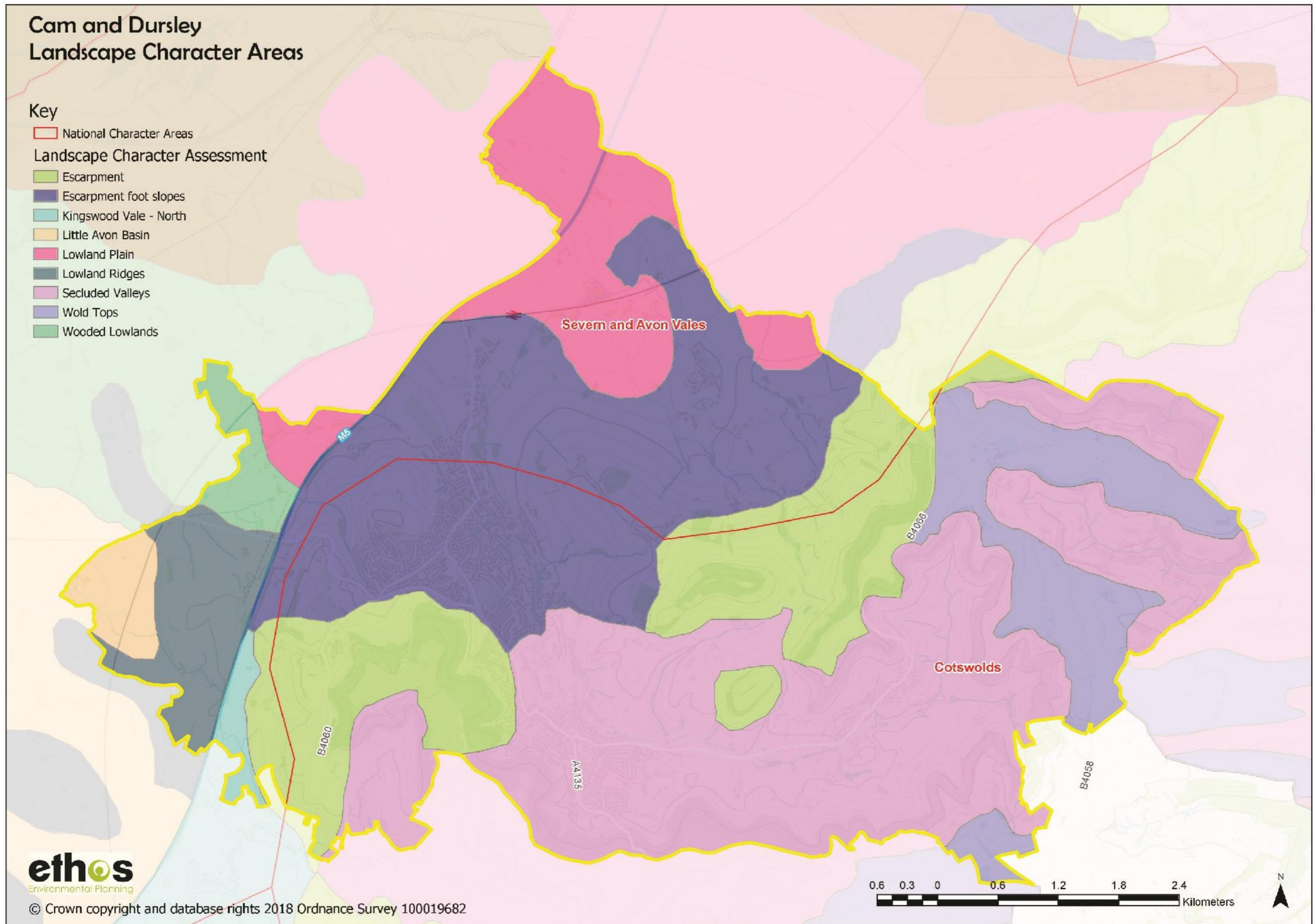
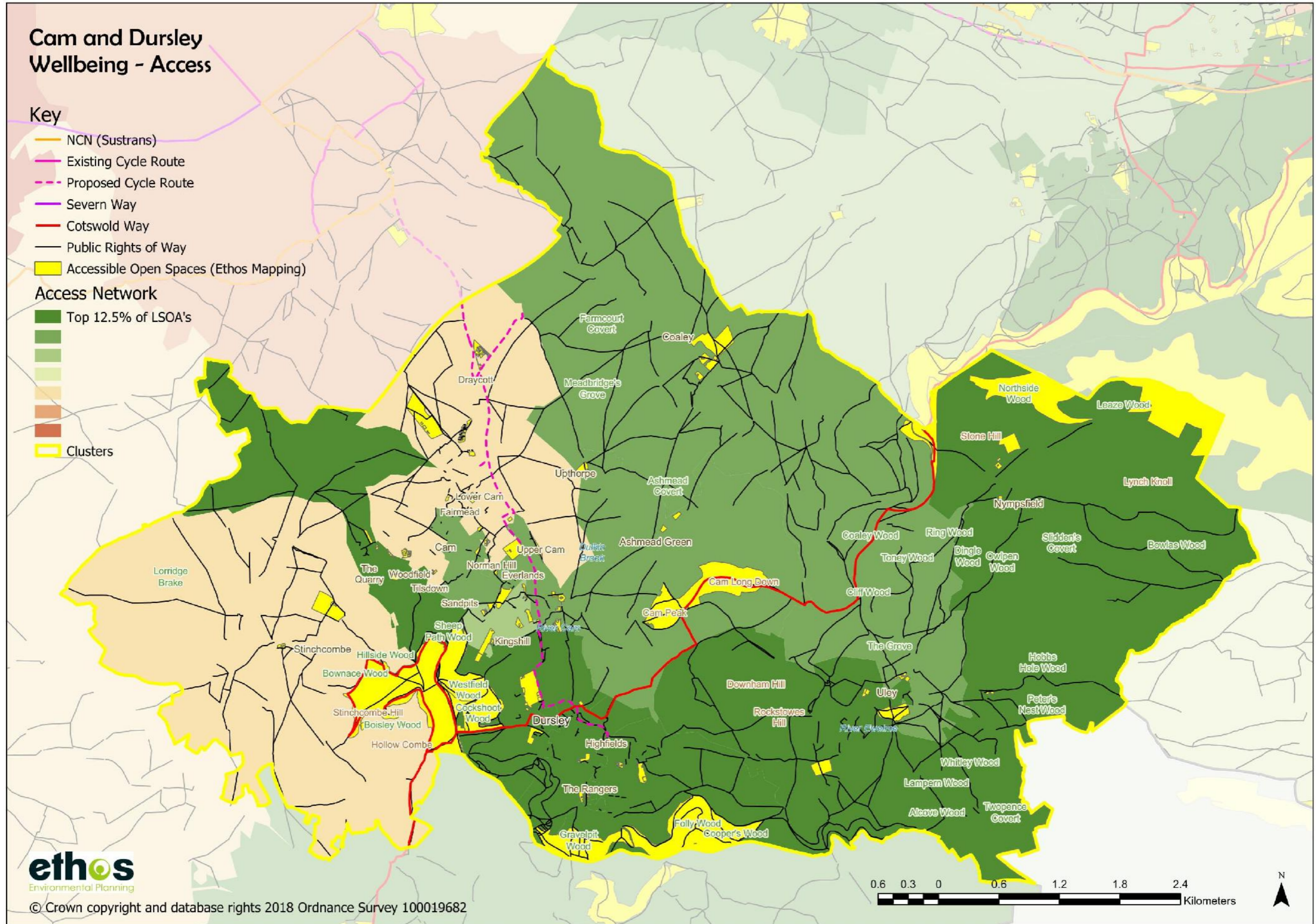


Figure 7 Mapping of GI Network by Theme: Water: Canals, Rivers/Streams, Lakes/Surface Water, Priority River Habitat, Floodzone, Source Protection Zones



Figure 8 Mapping of GI Network by Theme: Wellbeing: Accessible open space, PROW and key walking and cycling routes



### 3.0 Analysis of existing quantity of open space and GI

#### Open Space

Table 1 shows the provision and supply of open space within the Cam and Dursley cluster, using the Stroud quantity standards and ONS 2017 mid year population estimates to assess supply. Figures are provided in hectares and hectares per 1000 population.

The figures for 'Park and Recreation Grounds (Combined)' includes a combination of the following typologies:

- Park and Recreation Ground; and
- Outdoor Sport (Fixed).

Existing quantity figures are also provided for a number of typologies where there are no quantity standards for existing provision, these typologies are:

- Accessible Natural Green Space (existing provision analysed using the ANGSt standards);
- Community orchards;
- Education;
- Churchyards and Cemeteries; and
- Outdoor Sport (Private).

Table 1 Existing provision and supply of open space in the Cam and Dursley cluster

Typology	Existing Provision (ha)	Existing Provision (ha/1000)	Required Provision (ha)	Required Provision (ha/1000)	Supply (ha)	Supply (ha/1000)	Overall supply
Allotments	2.33	0.12	6.71	0.35	-4.38	-0.23	UNDER SUPPLY
Community Orchards	0	0	N/A	N/A	N/A	N/A	N/A
Amenity Green Space	6.96	0.36	7.66	0.40	-0.7	-0.04	UNDER SUPPLY
Parks and Recreation Grounds (Combined)	19.16	1	22.99	1.20	-3.83	-0.2	UNDER SUPPLY
<i>Park and Recreation Grounds</i>	<i>18.86</i>	<i>0.98</i>	<i>N/A</i>	<i>N/A</i>	<i>N/A</i>	<i>N/A</i>	<i>N/A</i>
<i>Outdoor Sport (Fixed)</i>	<i>0.3</i>	<i>0.02</i>	<i>N/A</i>	<i>N/A</i>	<i>N/A</i>	<i>N/A</i>	<i>N/A</i>
Play (Child)	0.65	0.03	1.15	0.06	-0.5	-0.03	UNDER SUPPLY
Play (Youth)	0.43	0.02	1.15	0.06	-0.72	-0.04	UNDER SUPPLY

Accessible natural green space	191.76	10.01	N/A	N/A	N/A	N/A	N/A
Education	25.45	1.33	N/A	N/A	N/A	N/A	N/A
Churchyards and Cemeteries	5.74	0.3	N/A	N/A	N/A	N/A	N/A
Outdoor Sport (Private)	7.46	0.39	N/A	N/A	N/A	N/A	N/A

As can be seen from the table above, within the Cam and Dursley cluster, there is an overall under supply of all typologies. The total shortfall is 10.13 ha.

## GI

The following GI assets have been identified within the Cam and Dursley Cluster:

*Table 2 GI assets*

Priority Habitats	Area (ha)
Coastal and floodplain grazing marsh	0
Coastal saltmarsh	0
Deciduous woodland	158.68
Good quality semi-improved grassland	53.76
Lowland calcareous grassland	61.76
Lowland dry acid grassland	1.81
Lowland meadows	0.17
Mudflats	0
No main habitat but additional habitats present	53.89
Purple moor grass and rush pastures	0
Traditional orchard	16.51

Nature conservation, AONB, geology and historic sites	Area (ha)
Ancient Woodland	357.37
KWS	469.53
LNR	0
NNR	0
RAMSAR	0
SAC	0
SPA	0
SSSI	104.93
RIGS	9 <sup>1</sup>
AONB	2756.54
Registered Parks	101.04
SAM	32.64

<sup>1</sup> This is the number of sites, rather than the area, as the dataset is in point format.

Rivers and Canals	Length (m)
River Cam	6582.27
River Ewelme	4043.80
Doverte Brook	165.32
Miry Brook	108.10
Wickster's Brook	15.15

## 4.0 Analysis of existing access to open space and GI

### Open space

This section provides maps showing access to different types of open space across the Cam and Dursley Cluster area using the Stroud access standards (more detail is provided in section 7.3 of the main report (part 1)).

These access maps show where the gaps in access are to the different open space typologies (using Census Output Areas and settlement boundaries) against the access standards, and are to be used in conjunction with the analysis of supply of open space (see table 1) to help identify where the priorities for new open space provision are and also which open spaces should be protected i.e. those spaces that if lost, would create a gap in access.

Figure 9 Access to allotments and community orchards (15 minutes' walk time)

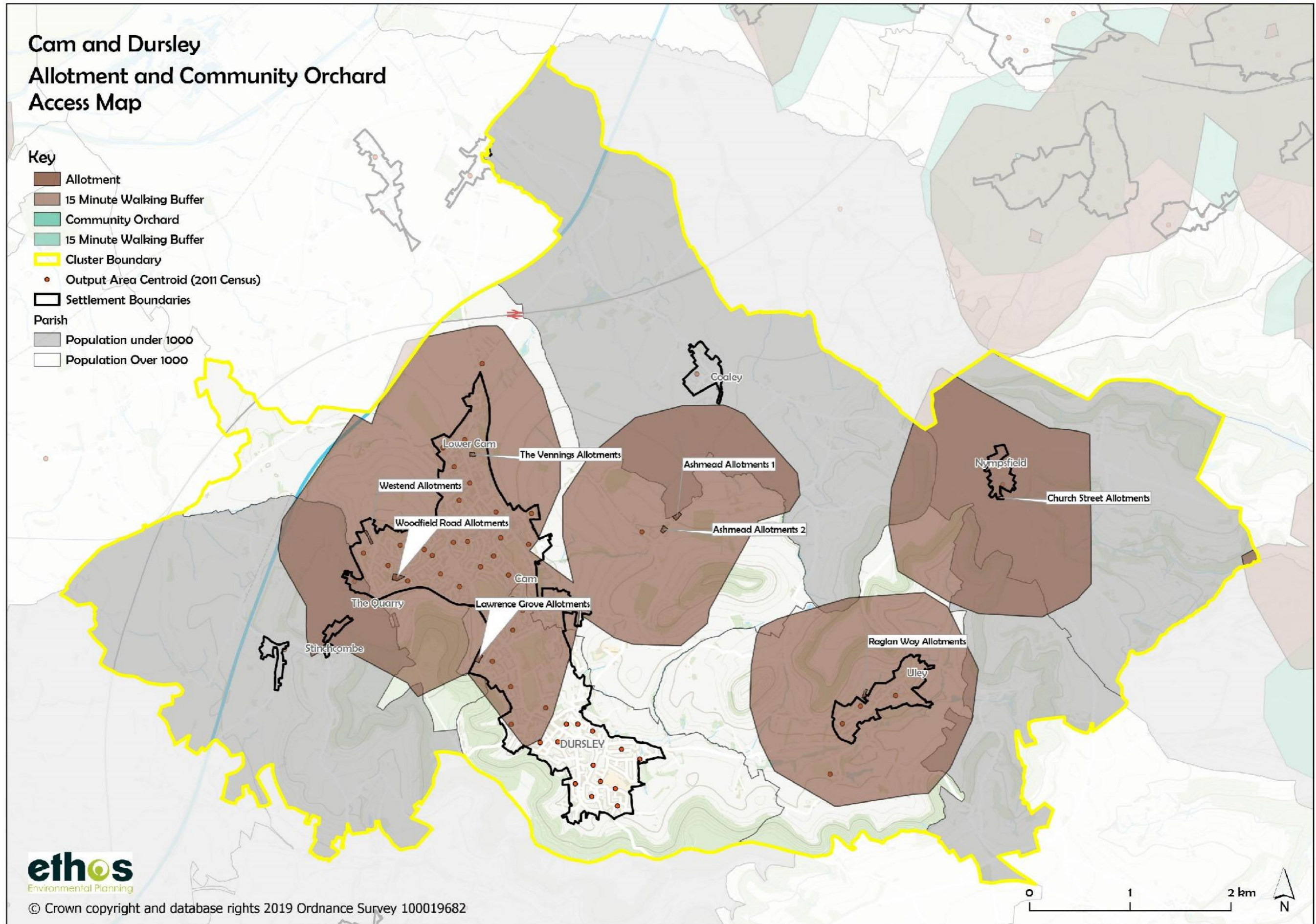


Figure 10 Access to amenity green space (13 minutes' walk time)

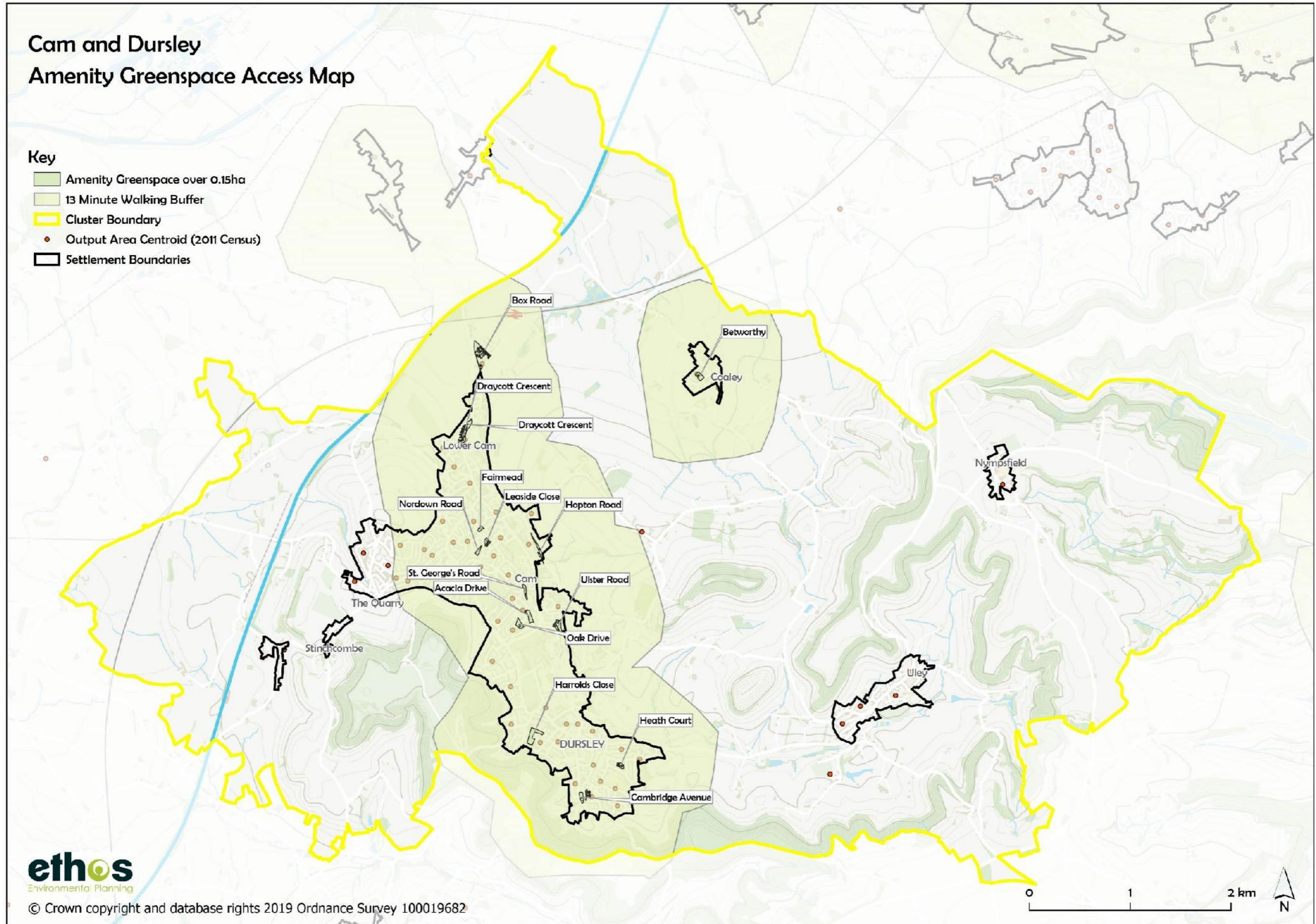




Figure 11 Access to parks and recreation grounds, amenity green space and outdoor sport private (13 minutes' walk time)

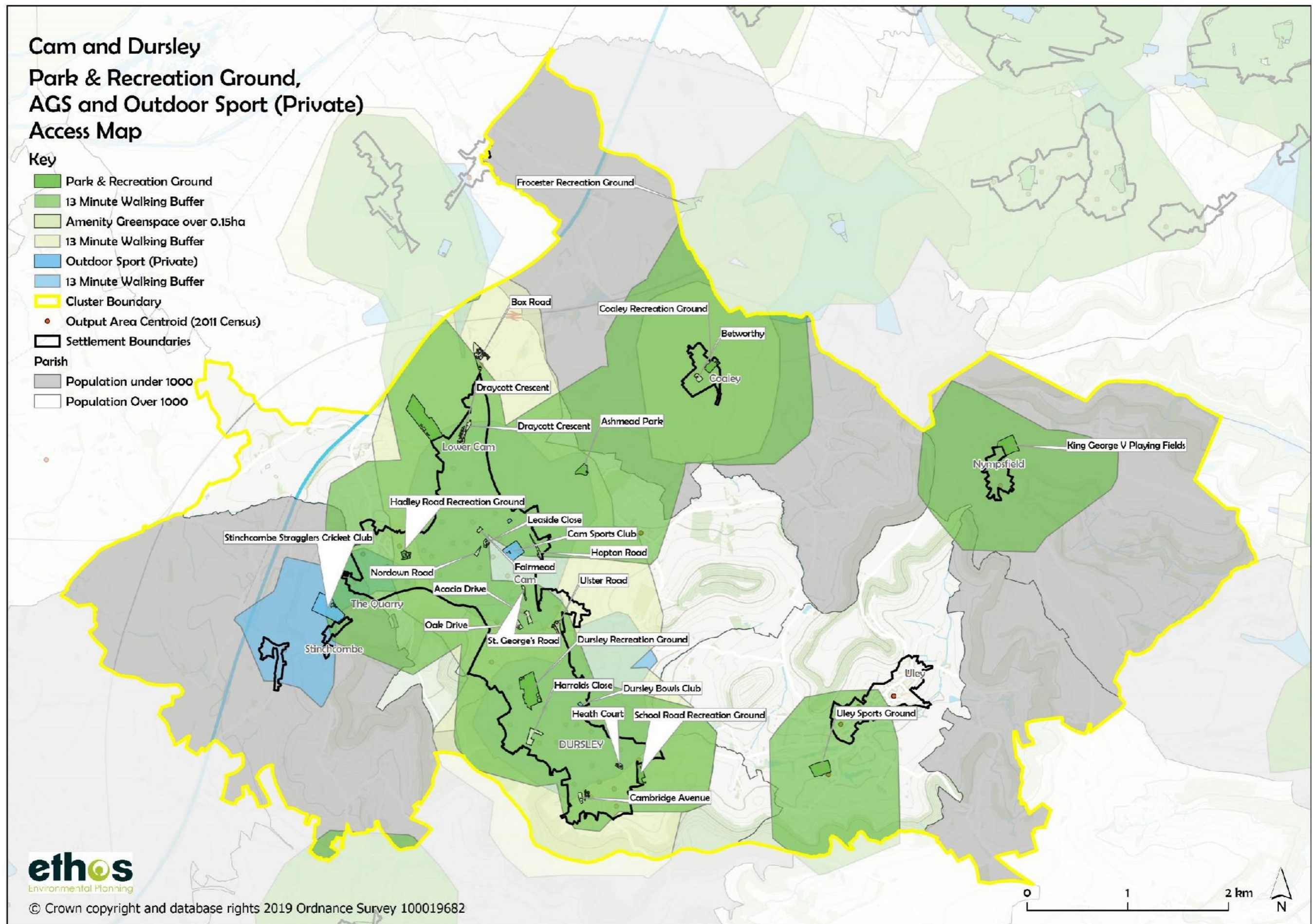


Figure 12 Access to children's play space (10 minutes' walk time)

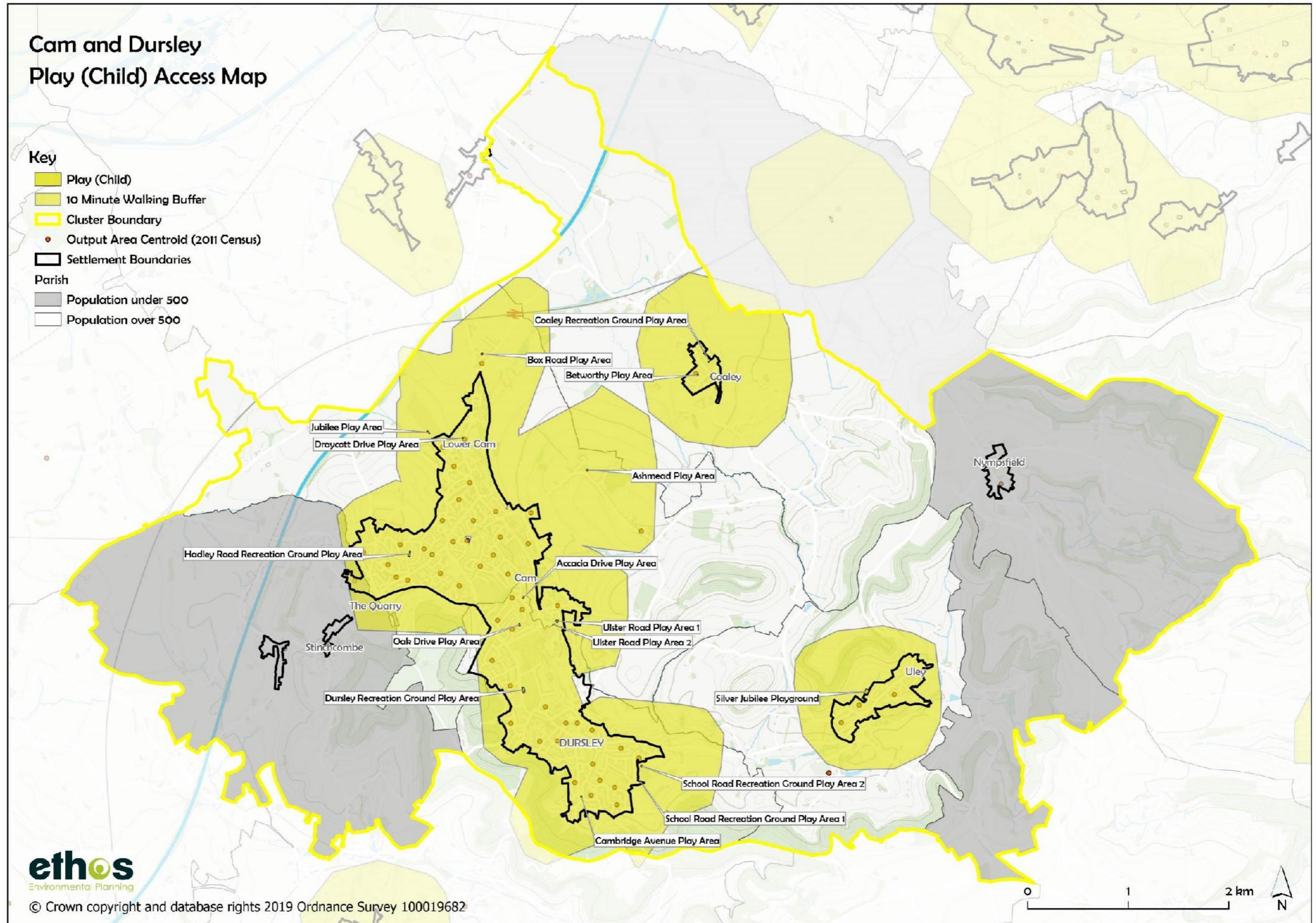


Figure 13 Access to youth play space (15 minutes' walk time)

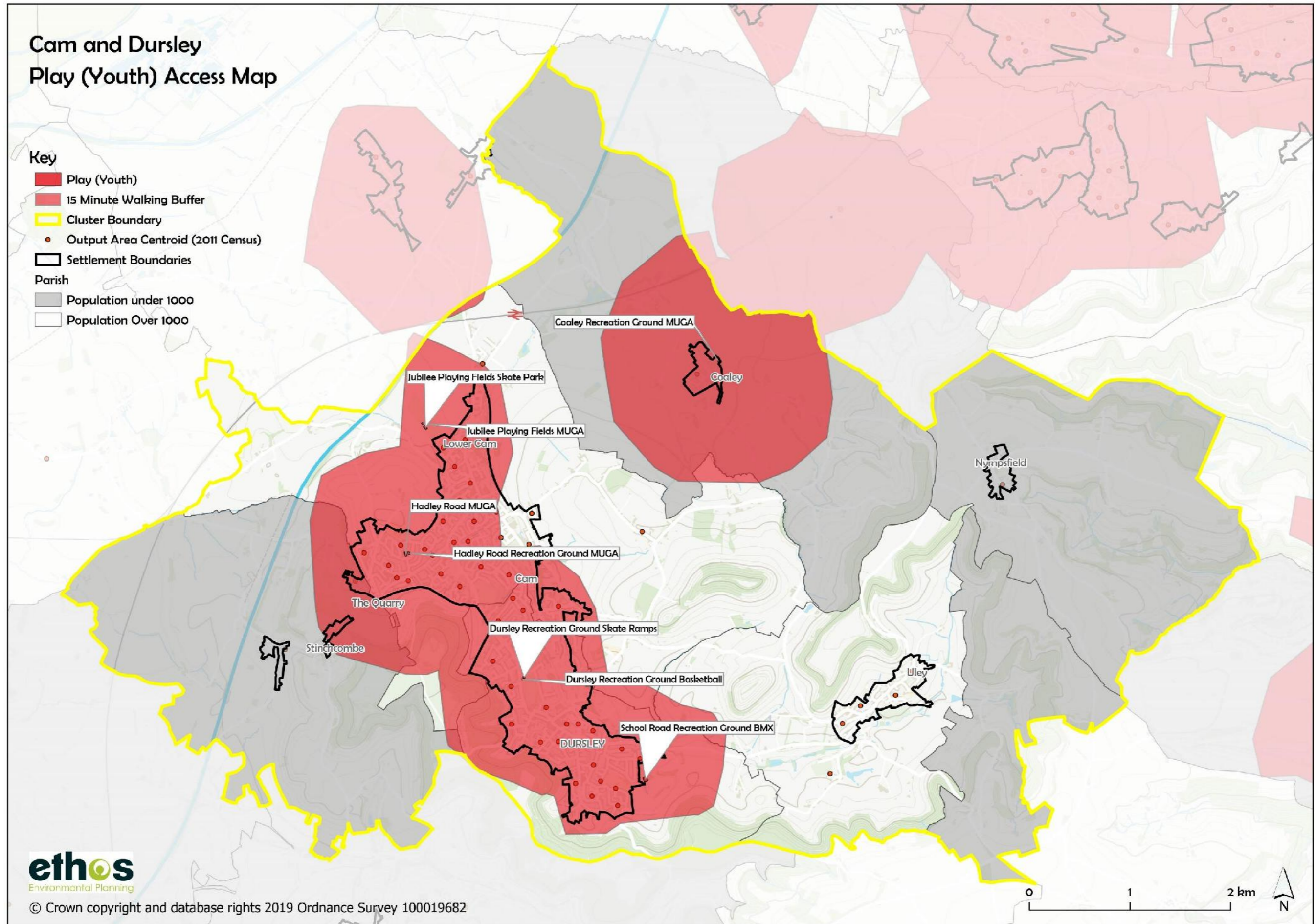


Figure 14 Access to accessible natural green space (960m buffer)

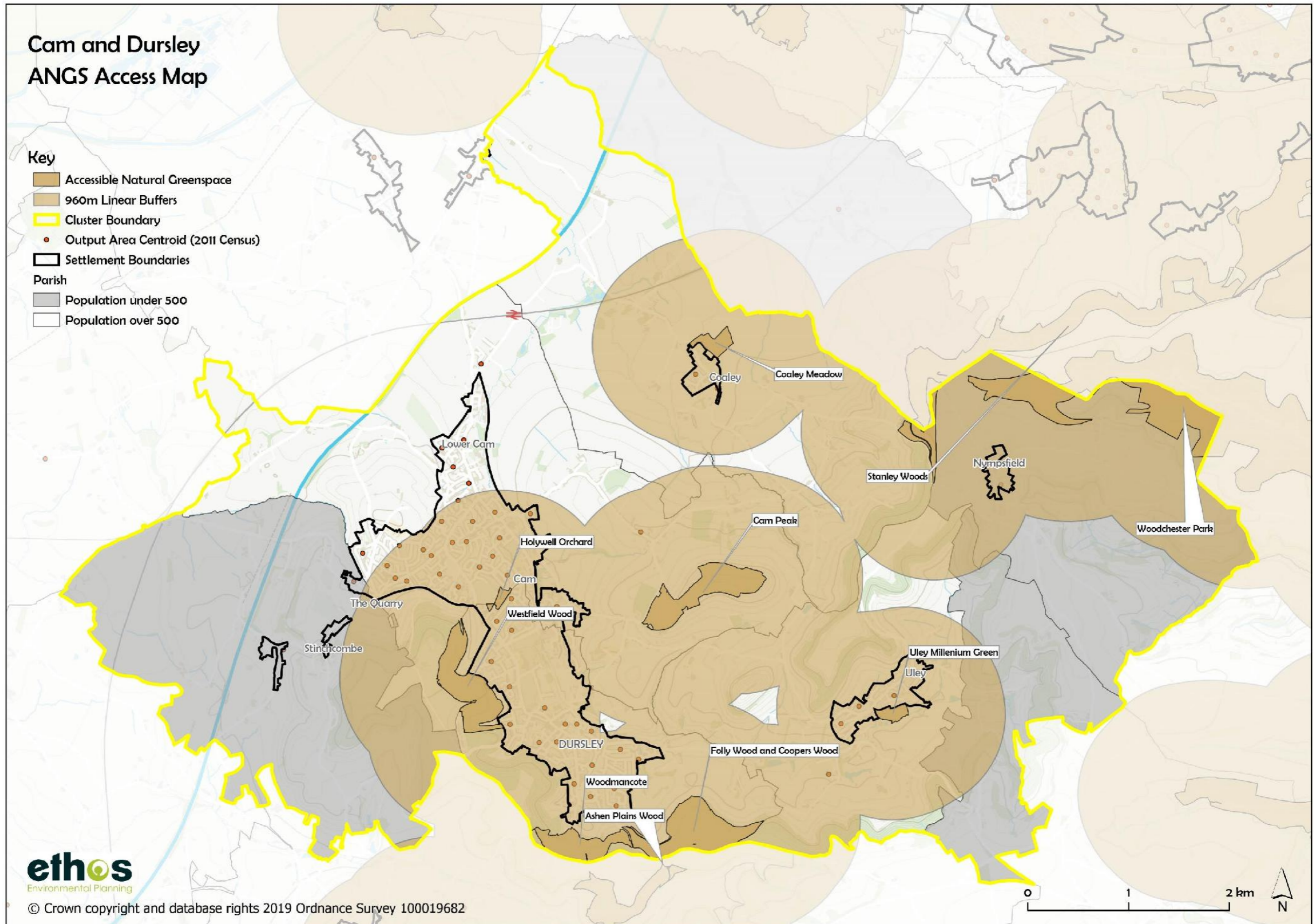


Figure 15 Access to accessible natural green space (20ha + sites within 2km)

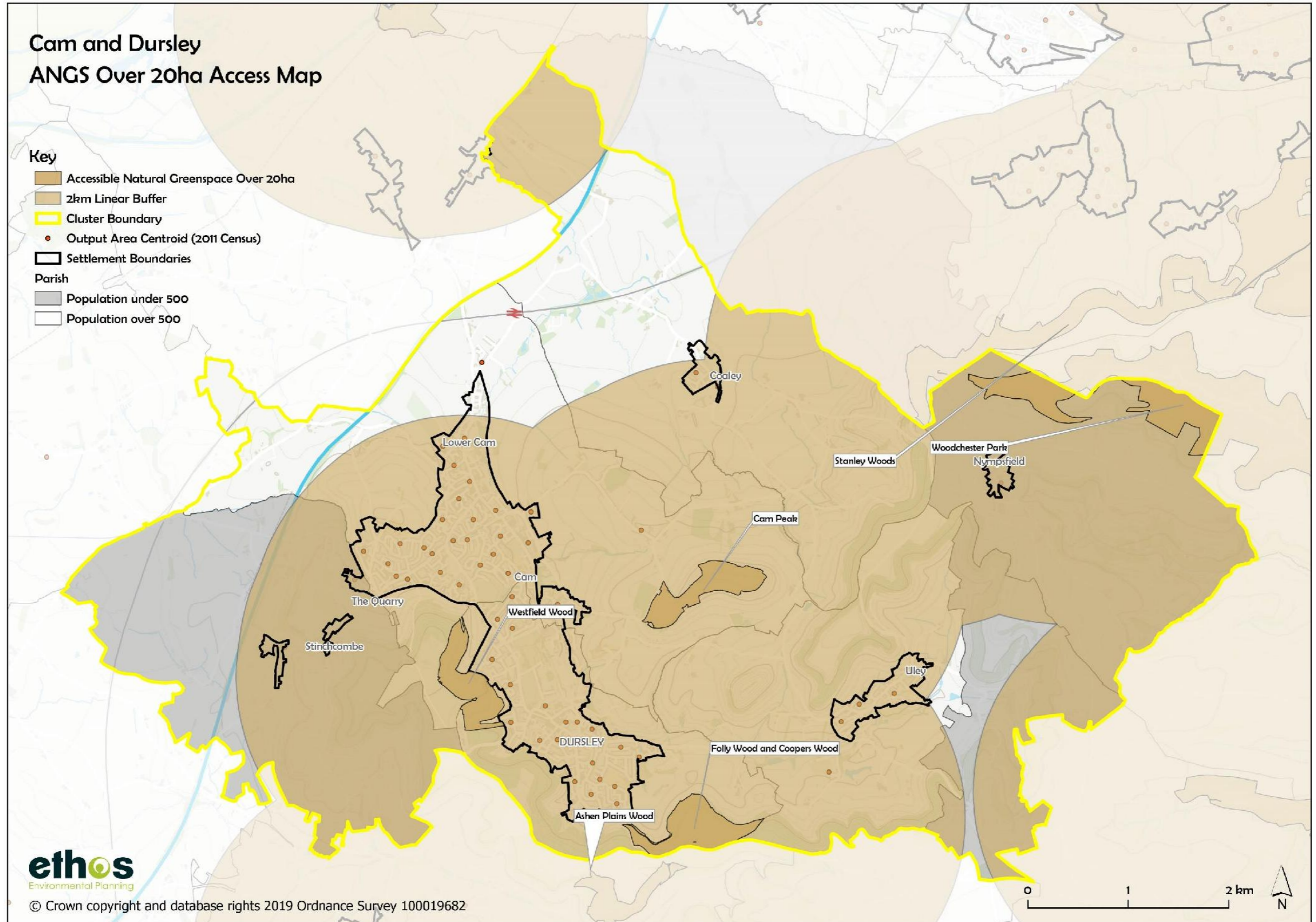


Figure 16 Access to accessible natural green space (100ha + sites within 5km)

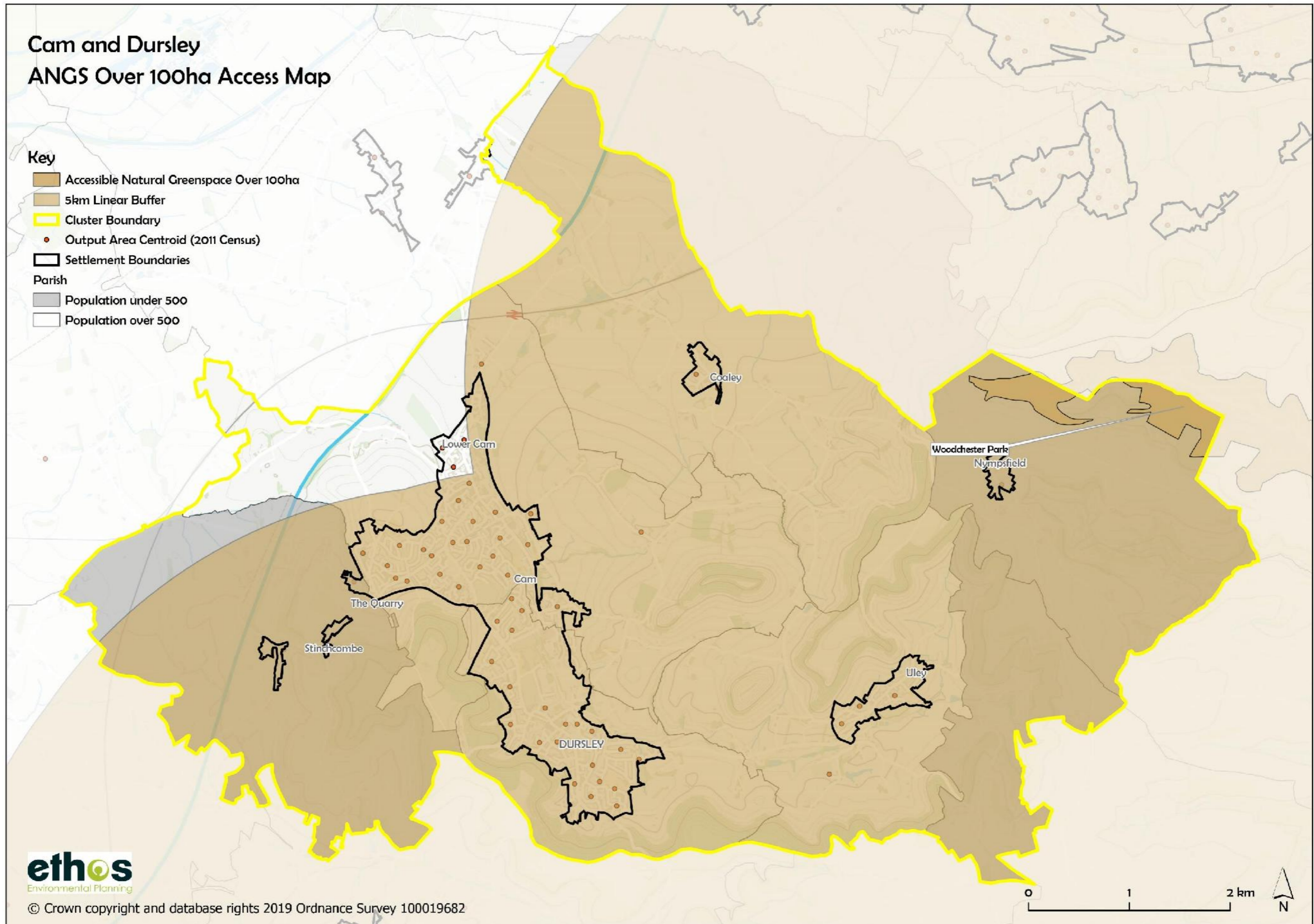


Table 3 below summarises the access maps provided at figures 9 to 16, highlighting any gaps or access issues.

*Table 3 Summary of existing open space access issues for the Cam and Dursley cluster*

<b>Typology</b>	<b>Current Access</b>
Allotments and community orchards	There are no community orchards within the cluster. However, access to allotments is generally good across the majority of the cluster, however, when considering those parishes with over 1000 people, there is a large gap in access in the southern part of Dursley.
Amenity Green Space	Access across Cam, Coaley and Dursley settlements is good with a small section of the west of Cam having poor access. There are also large gaps in access in Nymphsfield, Uley and Stinchcombe.
Parks and Recreation Grounds	Generally good access to parks and recreation grounds, however there are small gaps in access in Uley and Cam.
Children's play space	There is good access to children's play spaces across the parishes which have a population of over 500.
Youth Play space	In considering those parishes with a population of over 1000, the main gaps in access are in Uley and a small area in the east of Cam.
Accessible Natural Green Space	Good access against the 960m access standard, with small gaps in access in Settlement areas in Lower Cam and Stinchcombe. Also good access against ANGSt standards - 20+ha sites and 100+ha sites (with small gap in Lower Cam).

## GI

Figure 8 (section 2) shows PROW network and key walking and cycling routes.

As can be seen, there is good access along the Cotswold Way long distance footpath, which provides access across the cluster and connects to the wider PROW network. There is a good network of PROW and there are proposals for a new cycling and walking route (identified in the Local Plan Emerging Strategy Paper – see section 6 below).

When analysing access against the Natural England Access Network Mapping (also see figure 8), it shows that the area generally has a good relative abundance of accessible land, although it indicates that there is less accessible land in the western part of the cluster (however there are open spaces, PROW and the proposed cycle route within the western part of the cluster). There are limitations with this data as explained in section 7.6.2 of the main report (part 1).

## 5.0 Open Space and GI Quality Assessment

### Quality audit results

Figure 17 provides a summary of the quality audit results for the Cam and Dursley cluster. As can be seen, the majority of open spaces assessed are good quality (with a score of A). There were 3 sites which scored B (average quality) which were Welling Close, Heath Court, School Road Recreation Ground Play Area 1. 1 site (Dursley Recreation Ground Skate Ramps scored C (poor quality).

Figure 18 illustrates how each open space scores in relation to its quality in terms of its contribution to GI against the 3 themes – wellbeing, water and wildlife. As can be seen from the figure below, generally sites were assessed as being good to average<sup>2</sup>.

A summary of the quality and GI audit results from the Cam and Dursley cluster is provided in table 4 below.

---

<sup>2</sup> Only parent sites were considered for their contribution to GI.



Table 4 Quality audit results

Site ID	Site Name	Typology	Description of Site	Open Space Suggestions	GI Suggestions	Open Space Total Score	Open Space Grade	GI Total Score	GI Grade
900	Holywell Orchard	Accessible Natural Greenspace	Large community orchard with high quality welcoming informational signage, simple path network and well managed trees.	None.	None.	87.5	A	7.33	A
1147	Coaley Peak	Accessible Natural Greenspace	Fantastic site with numerous benches and picnic benches to sit and relax and admire the views, parking area, excellent information signage, historic feature (long barrow), bins, scattered trees and copse areas.	None.	None.	90	A	7.67	A
3039	Uley Millenium Green	Accessible Natural Greenspace	A large natural meadow space with many good quality benches, wildflower planting and excellent welcoming signage info signage.	None.	None.	93.3	A	8	A
4267	Cam Peak	Accessible Natural Greenspace	Excellently managed reserve with high biodiversity and stunning views. High quality information board at entrance.	Paths in the woodland could be made more accessible.	None.	87	A	8.67	A
746	Cambridge Avenue	Amenity Greenspace	Attractive residential amenity with enclosed play and well managed mature trees.	Consider installing more seating.	Potential for some formal or wild planting.	81.1	A	7.33	A

Site ID	Site Name	Typology	Description of Site	Open Space Suggestions	GI Suggestions	Open Space Total Score	Open Space Grade	GI Total Score	GI Grade
816	Harrolds Close	Amenity Greenspace	Grass amenity with hedgerow borders on fairly steep gradient with informal paths.	Add seating and bins.	None.	74.3	A	6.67	B
867	Oak Drive	Amenity Greenspace	Attractive amenity with open play, cycle parking provision, bench, bin and street lighting. Excellent path and soft landscape management.	The margins would benefit from additional planning to disguise metal fencing and improve biodiversity.	None.	93.3	A	5.67	B
876	Acacia Drive	Amenity Greenspace	Open residential amenity grassland, well maintained, with concrete path and street lighting. A few mature trees and hedgerow lining path.	None.	None.	80	A	5.33	B
883	Ulster Road	Amenity Greenspace	Exemplary new site built as part of new development, with varied well managed planting, stream and two wooden play areas.	None.	None.	91	A	8	A
896	St. George	Amenity Greenspace	Attractive visual amenity near housing estate with path, lighting and long grass.	None.	None.	83.75	A	6.67	B
926	Nordown Road	Amenity Greenspace	Well maintained amenity grassland with dog bin. Good biodiversity around margins.	None.	None.	81.43	A	5.67	B
927	Leaside Close	Amenity Greenspace	Residential amenity grass land, well maintained with mainly aesthetic value.	None.	Low biodiversity, potential for more planting.	75	A	4.67	B

Site ID	Site Name	Typology	Description of Site	Open Space Suggestions	GI Suggestions	Open Space Total Score	Open Space Grade	GI Total Score	GI Grade
929	Hopton Road	Amenity Greenspace	Large grass amenity with war memorial and formal planting. Bins at either end and mature trees. well managed.	Large grass amenity with war memorial and formal planting. Bins at either end and mature trees. well managed.	None.	84	A	5.67	B
1080	Draycott Crescent	Amenity Greenspace	Attractive roadside amenity with variety of mature trees, formal planting and seating.	None.	None.	86.67	A	6.67	B
1118	Betworthy	Amenity Greenspace	Large open residential amenity with basic play, mature trees and lawn.	Install seating.	None.	80	A	6	B
3245	Fairmead	Amenity Greenspace	Mown small amenity grassland with thick undergrowth borders.	None.	Consider improving the biodiversity of the margins with new planting.	71.67	A	4.67	B
3254	Draycott Crescent	Amenity Greenspace	Amenity grass surrounding housing estate with mature trees.	Some areas have bad littering, arrange regular litter picks.	None.	72	A	7	B
747	Welling Close	Amenity Greenspace	Patches of grass amenity, fairly overgrown and often with litter.	None.	None.	61	B	4	C
755	Heath Court	Amenity Greenspace	Slightly overgrown residential amenity with scattered trees.	Increase grass cutting frequency.	None.	67	B	5	B
754	School Road Recreation Ground	Parks and Recreation Grounds	A high-quality recreation ground with informal sport, multiple play areas and BMX track. Well maintained soft landscaping and clear signage throughout.	None.	None.	88	A	7	B

Site ID	Site Name	Typology	Description of Site	Open Space Suggestions	GI Suggestions	Open Space Total Score	Open Space Grade	GI Total Score	GI Grade
838	Dursley Recreation Ground	Parks and Recreation Grounds	Large open recreation ground with senior football, gated play, basketball and very basic skate ramp.	Consider installing more seating option or a picnic bench area.	Improve biodiversity around margins of recreation ground.	84	A	5	B
945	Hadley Road Recreation Ground	Parks and Recreation Grounds	Excellent quality park with good soft landscape management, a MUGA, basketball court and open play with modern equipment. Plenty of lighting and bins, no issues.	None.	Potential to improve biodiversity with marginal planting.	84	A	5.3	B
1088	Jubilee Playing Fields	Parks and Recreation Grounds	A very high-quality site with excellent informal football, play areas, seating and varied flora.	Sign post the site better from the road.	None.	92	A	8	A
1103	Ashmead Park	Parks and Recreation Grounds	A fairly hidden recreation ground with play area and gated at entrance point.	Install welcoming signage to make site visible from the road.	None.	85	A	5.33	A
1115	Coaley Recreation Ground	Parks and Recreation Grounds	A decent quality recreation ground with informal football, village hall parking, plenty of bins and seating.	None.	None.	82	A	5	B
1163	Frocester Recreation Ground	Parks and Recreation Grounds	Good quality cricket pitch with practice nets and pavilion, and football pitch at the far end, there are benches around the periphery, and a large parking area. Informal access appears to be allowed, lovely views, site bordered by trees and hedgerows.	Improve access and welcome – install signage and proper gate (at present there is a pallet crate being used), some of the benches would also benefit from refurbishing, and any debris cleared from the site margins.	None.	78	A	7	B

Site ID	Site Name	Typology	Description of Site	Open Space Suggestions	GI Suggestions	Open Space Total Score	Open Space Grade	GI Total Score	GI Grade
740	Silver Jubilee Playground	Play (Child)	A large enclosed play area with a variety of well maintained equipment, bins and benches. Most of the site is good quality soft landscaping.	Repair entrance gate so that it shuts properly.	None.	93.33	A	8	A
745	Cambridge Avenue Play Area	Play (Child)	Well maintained if basic play area with good quality impact flooring.	Install welcoming signage and consider installing more interesting equipment in the future.	None.	84.44	A	N/A	N/A
753	School Road Recreation Ground Play Area 2	Play (Child)	Well maintained play area with somewhat dated equipment but in good condition. Seating and bins at entrance and good impact flooring.	None.	None.	84.44	A	N/A	N/A
844	Dursley Recreation Ground Play Area	Play (Child)	High quality play area in use at time of audit, fenced with grass flooring, flying fox and climbing frame.	None.	None.	86	A	N/A	N/A
866	Oak Drive Play Area	Play (Child)	Very high quality new open play area with wooden, well maintained equipment - climbing frames and see saws. Grass flooring well mown.	None.	None.	91.11	A	N/A	N/A
882	Ulster Road Play Area 1	Play (Child)	Brilliant modern play area with sandpit climbing frame and attractively designed wooden seating, bins and fencing.	None.	None.	95	A	N/A	N/A
884	Ulster Road Play Area 2	Play (Child)	A very well maintained, brand new natural wooden play area with	None.	None.	93.33	A	N/A	N/A

Site ID	Site Name	Typology	Description of Site	Open Space Suggestions	GI Suggestions	Open Space Total Score	Open Space Grade	GI Total Score	GI Grade
			welcoming signage, attractive formal planting, seating and gated entrance.						
899	Accacia Drive Play Area	Play (Child)	Decent fenced play with dated equipment although in safe and working condition. Good soft impact flooring, bins at entrances.	The flooring needs weeding and the equipment could be considered for replacing with new equipment.	None.	81.11	A	N/A	N/A
943	Hadley Road Recreation Ground Play Area	Play (Child)	Very high quality and modern open play area with plenty of equipment to tailor to different ages. Infant area is will surfaced and the rest had good soft landscaping.	None.	None.	93	A	N/A	N/A
1079	Draycott Drive Play Area	Play (Child)	A good quality, modern play area with equipment in good condition and fence and gate.	None.	None.	94	A	N/A	N/A
1116	Coaley Recreation Ground Play Area	Play (Child)	A good selection of high-quality play equipment on impact flooring with bins at entrance.	The site appears to be missing most of its fencing.	None.	79	A	N/A	N/A
3167	Box Road Play Area	Play (Child)	Exemplary, brand new play area with high quality welcoming signage, equipment and formal planting at entrance.	None.	None.	98.89	A	5.33	B
752	School Road Recreation Ground Play Area 1	Play (Child)	Solitary see saw by entrance to recreation ground	Install more equipment.	None.	58.89	B	N/A	N/A

Site ID	Site Name	Typology	Description of Site	Open Space Suggestions	GI Suggestions	Open Space Total Score	Open Space Grade	GI Total Score	GI Grade
749	School Road Recreation Ground BMX	Play (Youth)	BMX track in exemplary condition with signage and bins at entrance.	None.	None.	98.89	A	N/A	N/A
837	Dursley Road Recreation Ground Basketball	Play (Youth)	Basic basketball half with hard surfacing.	Consider converting the site into a MUGA and scrapping the adjacent skate area if local needs point to this.	None.	74.44	A	N/A	N/A
944	Hadley Road Recreation Ground MUGA	Play (Youth)	Functional large basketball court with basic street lighting. Seating and bins available as part of neighbouring play.	Could upgrade to a high quality MUGA and remove adjoining MUGA or viceversa.	None.	71	A	N/A	N/A
1101	Jubilee Road Playing Field MUGA	Play (Youth)	A basketball half with teen shelter, decent flooring.	None.	None.	81.11	A	N/A	N/A
1102	Jubilee Road Playing Fields Skate Park	Play (Youth)	Impeccable skate park with varied ramps and no graffiti.	None.	None.	92	A	N/A	N/A
1117	Coaley Recreation Ground MUGA	Play (Youth)	A decent quality basketball half with teen shelter, good surfacing.	Could repaint the metal work as quite worn.	None.	78.89	A	N/A	N/A
836	Dursley Recreation Ground Skate Ramps	Play (Youth)	Incredibly undersupplied skate ramp area.	Either remove the whole site or perform a complete retrofit with completely new equipment.	None.	37	C	N/A	N/A

Figure 17 Summary of open space quality audit results in Cam and Dursley cluster

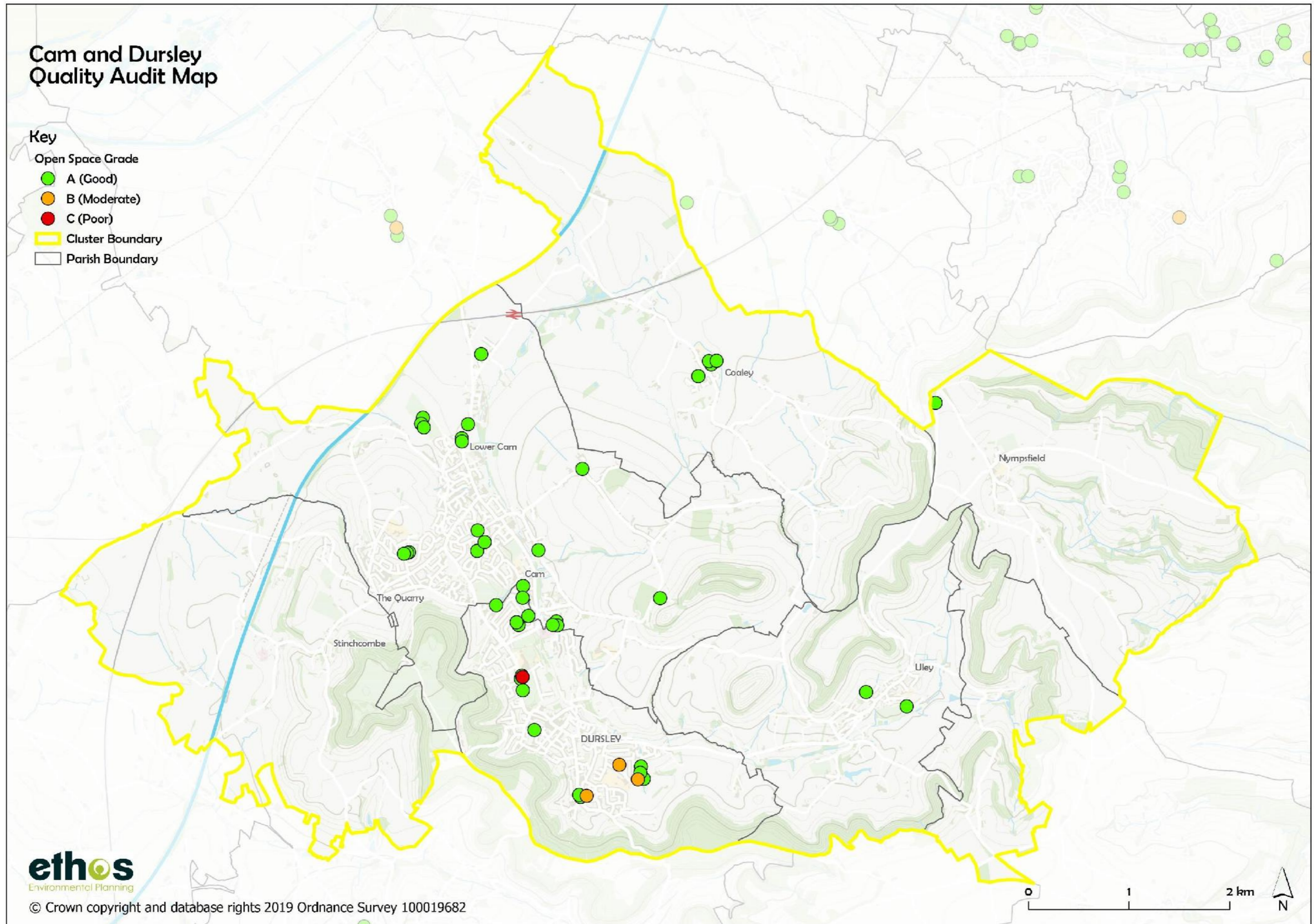
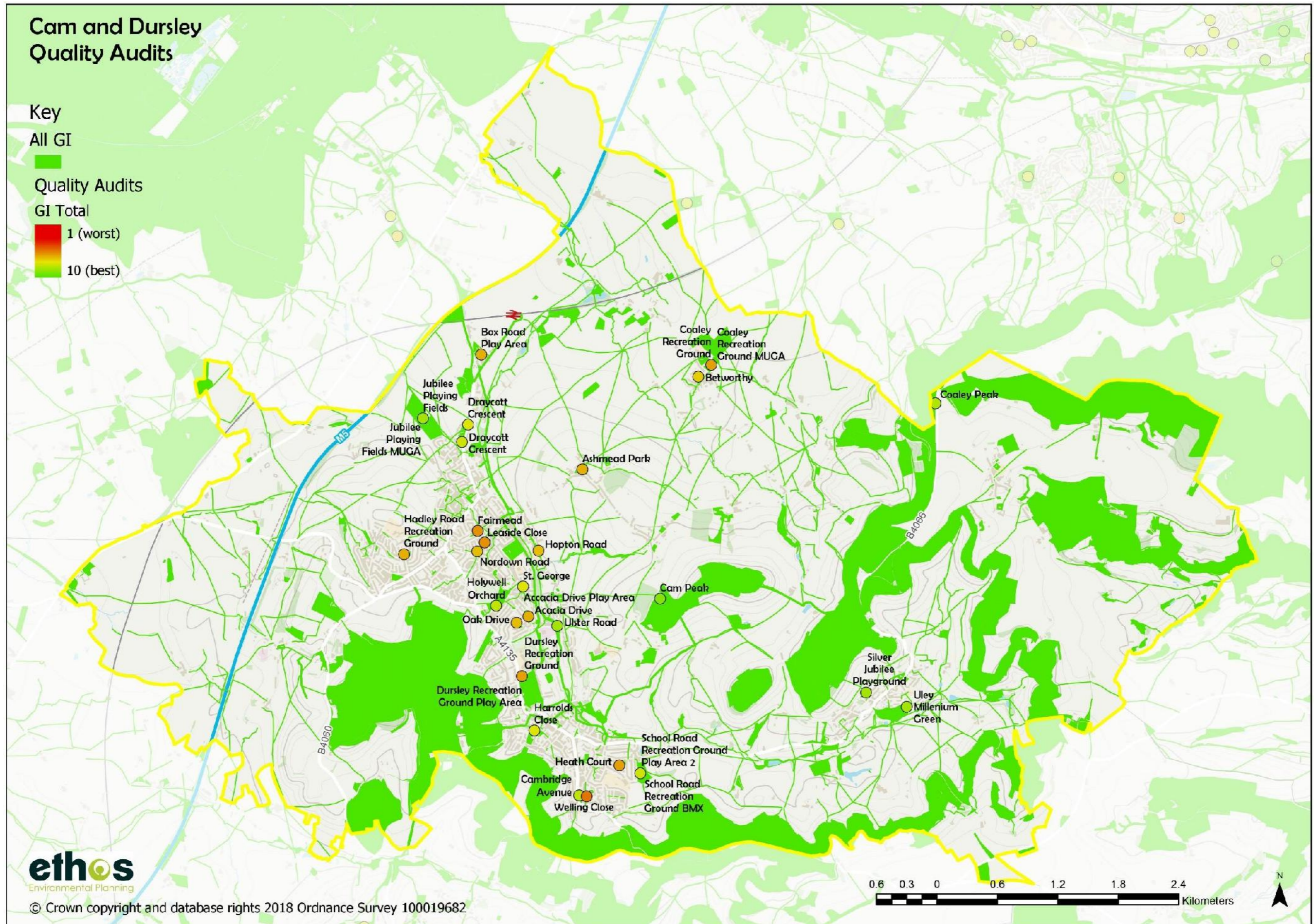




Figure 18 Summary of open space GI quality scores



## Condition of SSSIs

In addition to the audits of open space, a desktop audit of the quality of designated sites/GI within the Cluster has also been undertaken. The following table shows the condition summary (as of February 2019) of SSSIs within the cluster. As can be seen, two of the SSSIs Coaley Wood Quarries and Easter Park Farm Quarry are in favourable condition, although there is scope to improve the condition of Stinchcombe Hill and Woodchester Park SSSI.

Figure 19 Cam and Dursley SSSIs

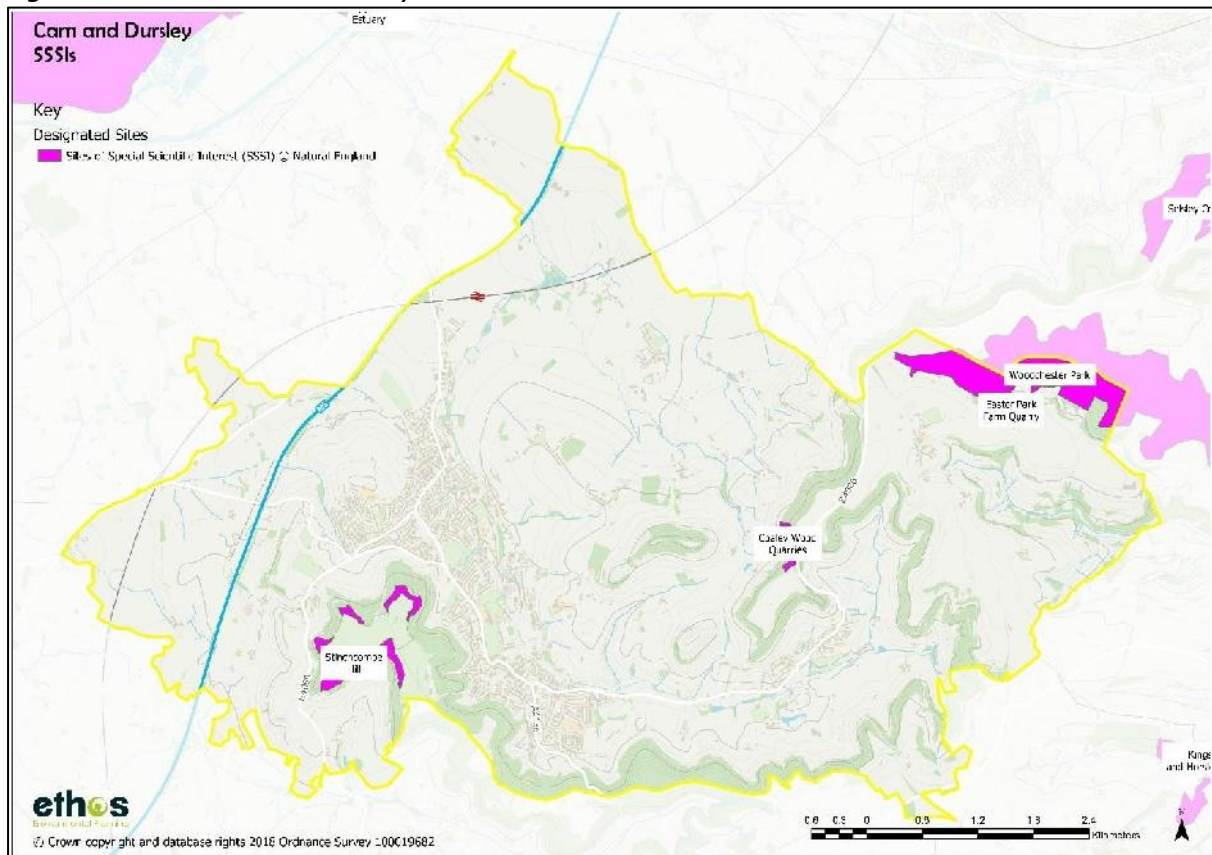


Table 5 Condition summary of SSSI's sites within the Cam and Dursley cluster

Site Name	Designation	Size (ha)	Description/features of interest	Condition summary
Coaley Wood Quarries	SSSI	4.96	A famous geological site for abundant fossils of Lower Jurassic age. One particular horizon is especially noted for the ammonites it contains which provides great value for dating rocks.	100% Favourable

Site Name	Designation	Size (ha)	Description/features of interest	Condition summary
Easter Park Farm Quarry	SSSI	0.13	An important site for the study of Middle Jurassic rocks of the Bathonian Stage. The exposed limestones contain highly significant assemblage of fossil ammonites which allows them to be accurately dated and demonstrates the change in character that occurs in rocks of this age.	100% Favourable
Stinchcombe Hill	SSSI	25.72	Part of the Jurassic limestone scarp of the Cotswolds, this is an unimproved herb-rich grassland and scrub habitat, which support a number of rare and uncommon species. This includes the bee orchid and the rare early spider orchid. The site supports rich butterfly fauna including the uncommon marsh fritillary.	Unfavourable
Woodchester Park	SSSI	74.10	Situated within a secluded and sheltered valley running in a dip slope of the Cotswolds and managed by Gloucestershire Wildlife Trust. This site provides an environment for a breeding colony of greater horseshoe bats centred on the Mansion located within the site. Woodland is the most extensive habitat which includes original semi-natural woodland. There are some nationally restricted plants found in the woods including fingered sedge, angular Solomon's-seal and stinking hellebore. A range of important wildlife exists across the site including breeding birds (sparrowhawk, tawny owl), invertebrates (nationally restricted scarlet tiger moth) and butterflies.	95.80% Favourable. 4.2% Unfavourable – recovering.

### Natural England National Habitat Network Mapping

The Natural England National Habitat Network mapping also indicates that there is 'restorable habitat' within the Cam and Dursley cluster - areas of semi-natural habitat where the primary

habitat is present in a degraded or fragmented form and which are likely to be suitable for restoration.

See main report (part 1), section 7.6, figure 25 for overview map.

## 6.0 Future need for open space and GI corridors and opportunities

### Open Space

The table below shows the quantity requirements for open space provision from the predicted population growth resulting from housing development within the Cam and Dursley cluster. An explanation of how these growth figures have been calculated is provided in section 7.2.2 of the main report (part 1).

*Table 6 Open space requirements from new development within the Cam and Dursley cluster (up to 2040)*

Typology	Standard for new provision (Ha/1000)	Requirement for 3425 people (Ha)
Allotments	0.35	1.20
Community Orchards	0.15	0.51
Amenity Green Space	0.40	1.37
Park and Recreation Ground	1.20	1.12
Play Space (Children)	0.06	0.21
Play Space (Youth)	0.06	0.21
Natural Green Space	1.00	3.43
<b>Total</b>	<b>3.22</b>	<b>8.05</b>

### GI

The figure below shows the key GI corridors within the cluster, and key opportunities for enhancing the network in terms of connectivity (both for biodiversity/wildlife corridors and access for people). Improvements in terms of quality/functionality of GI are considered in section 5.

As can be seen from figure 20, the key GI corridors are the strategic GI corridor as identified by the GLNP (shown in yellow), which corresponds with the AONB/Nature Improvement Areas/Strategic Nature Areas. In addition to this, the following district GI has been identified:

F) River Cam Corridor, linking Dursley to Frampton Floodplain Grazing Marsh.

Opportunities for enhancing the connectivity of the network have also been identified as follows:

24. Biodiversity and access improvements from SA3 allocation to River Cam corridor, in line with policy SA3.

25. Proposed Cam, Dursley & Uley Greenway.

## Strategic Site Allocations

### Site Allocation SA3: North east of Cam

Allocated for a mixed-use development including employment, residential and community uses, has planning consent.

The development of the site will provide a landscaped linear park, including footpath along the River Cam and enhanced flood plain storage capacity, accessible natural green space and public outdoor playing space, structural landscape buffer to the south east of the development, below the 50m contour, incorporating existing hedgerows and trees, SuDS, extension of the Cam and Dursley cycle route along disused railway, and provision of a cycleway and footpath between the A4315 and Cam and Dursley railway station.

## Emerging Local Plan

The Local Plan Review Emerging Strategy (2018) sets out the following priorities and draft vision for the Cam and Dursley cluster:

***Local community representatives have highlighted the following key local issues and top priorities in relation to open space and GI:***

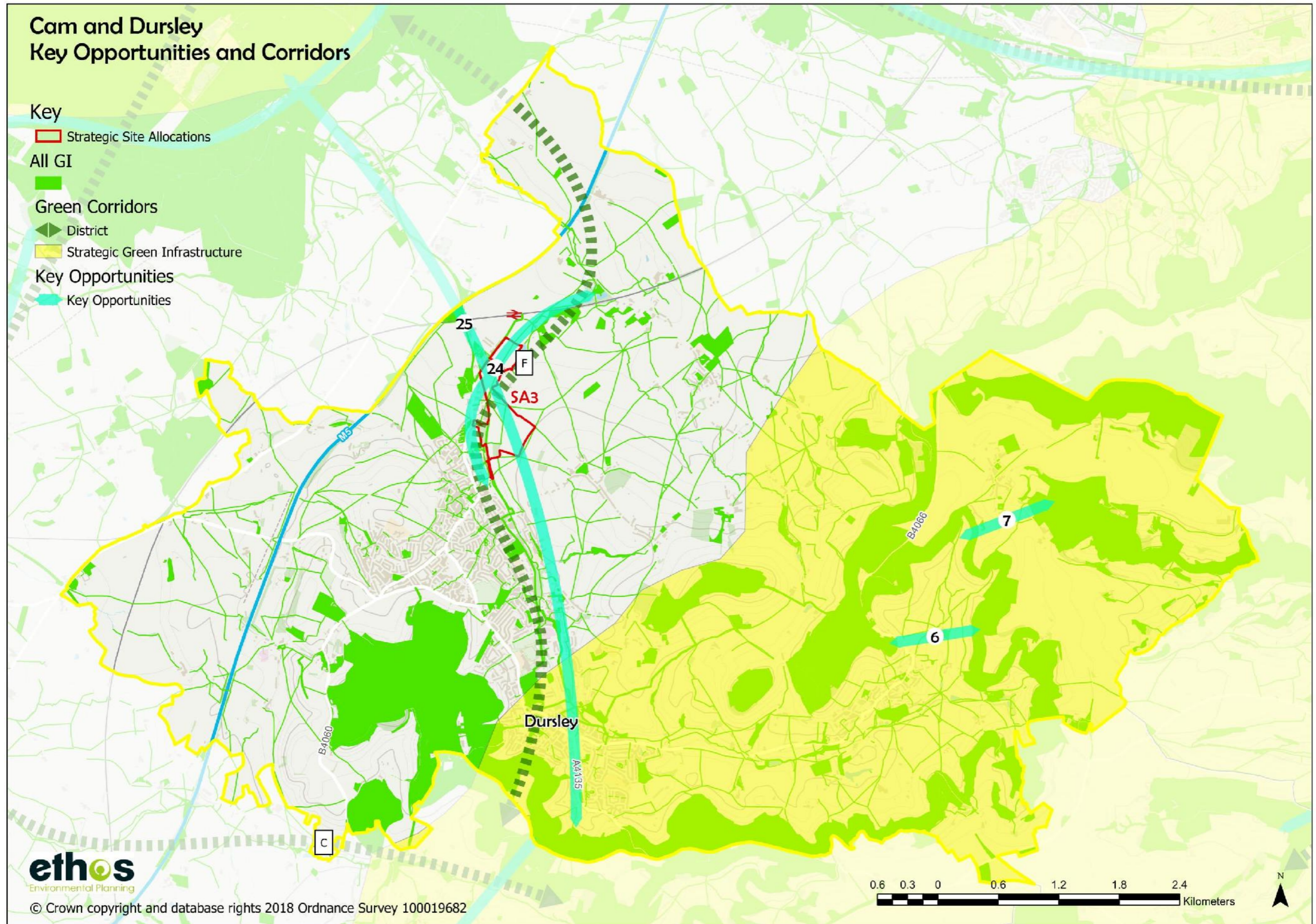
- *Enhancing walking and cycling routes and green links through to Uley and the Severn Vale.*

***Draft vision to 2040: "Growth and prosperity: revitalising the towns of Dursley and Cam to make an accessible, attractive focus for rural communities in the south..."***

*There will be accessible countryside for leisure, amenity and recreation in this attractive Cotswold edge location. Pleasant and safe green routes linking Cam, Dursley and Uley will be developed for walkers and cyclists, providing access to the surrounding countryside. Tourism will be boosted, given the location at a convenient mid points on the Way.....*

*.....The attractive local environment will be conserved and cared for, whilst providing learning opportunities, jobs, access to services and leisure activities for everyone.*

Figure 20 Key GI Corridors and Opportunities



## 7.0 Open Space and GI - Summary of priorities for the area

This section brings together the analysis of the existing quantity, access and quality of open space and GI and considers future requirements for open space from population growth, and considers the following priorities:

- Existing provision to be enhanced;
- Opportunities for re-location/re-designation of open space;
- Identification of areas for protection and new provision of open space; and
- Facilities that may be surplus to requirement.

### Existing provision to be enhanced

Section 5 provides a summary of the open space quality scores drawn from the quality audit.

When development sites are brought forward, consideration should be given to the potential to improve those sites that scored C (poor) or B (average) sites.

The list of sites that scored B or C are as follows:

- Welling Close (B)
- Heath Court (B)
- School Road Recreation Ground Play Area 1 (B)
- Durseley Recreation Ground Skate Ramps (C)

The GI quality scores and recommendations should also be considered.

A desktop assessment has also identified potential to improve the condition of the Stinchcombe Hill and Woodchester Park (from SSSI condition assessments).

### Opportunities for re-location/re-designation of open space

Opportunities to relocate or re-designate open spaces draws on both the quantity and access analysis. In the case of the Cam and Dursley cluster, there are shortfalls in supply of all typologies of open space and therefore there is little opportunity. There may be potential natural green space to accommodate low impact uses such as natural play or food growing, however, access to children's play space and allotments is good (with the exception of the south of Dursley which has no access to an allotment).

### Identification of areas for new provision of open space

The assessment has identified that there is an existing quantitative shortfall in the provision of all typologies of open space, therefore, the need to protect existing open space and maximise opportunities for securing new open space is key.

The requirements for onsite provision will depend on the size and location of new development. Table 6 sets out the overall requirement for new open space provision within Cam and Dursley cluster from new development, which is 8.05 ha. This is based on the predicted population growth, however this assumes that all provision will be on-site, which will not be the case in reality as many developments will be too small, and therefore CIL contributions will be required for off-site provision/improvements.

The GI corridors and opportunities map (figure 20, section 6) sets out the framework for protecting and enhancing GI.

Key opportunities for enhancing the connectivity of the network have been identified as follows (each number relates to the arrows on the map at figure 20):

24. Biodiversity and access improvements from SA3 allocation to River Cam corridor, in line with policy SA3.

25. Proposed Cam, Dursley & Uley Greenway.

#### **Protection of open space (and consideration of sites that may be considered as surplus)**

All open space and GI will be afforded protection unless it can be proved it is not required i.e. it's loss would not result in deficiencies in quantity, access or quality, and would not have a negative impact on the GI network in terms of functionality/connectivity.

There are shortfalls in all typologies of open space, therefore, it is recommended that there are no open spaces that are surplus to requirements.