

Changes to the Stroud District Local Plan Policies Map

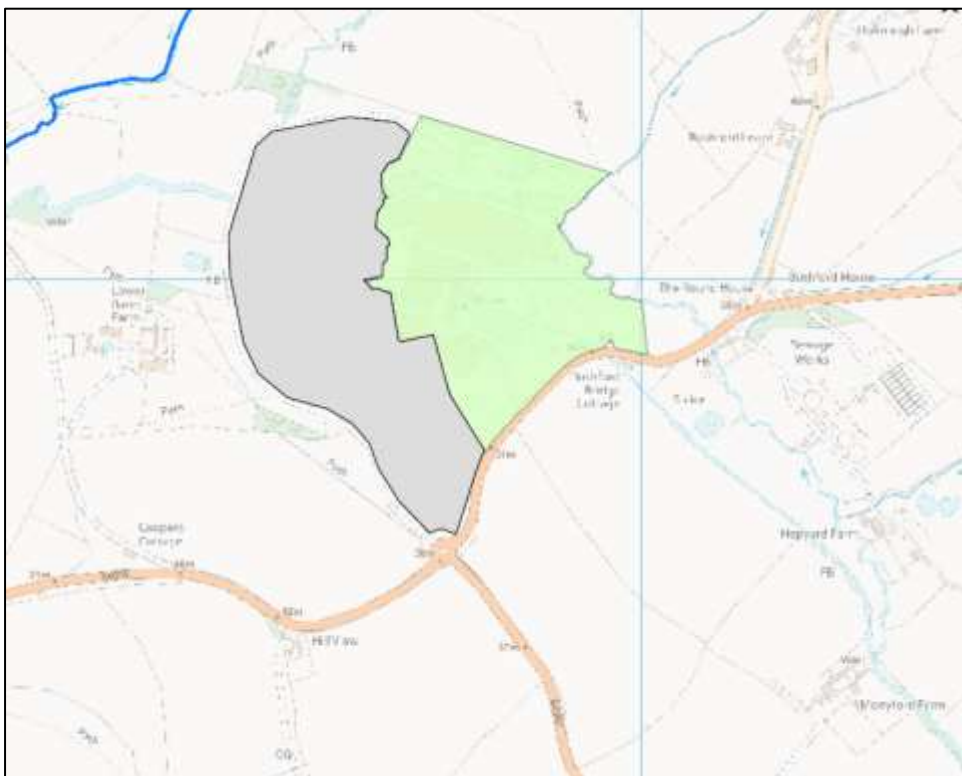
Introduction

The adopted Stroud District Local Plan Policies Map is available to view on the Council's website [here](#)

The Pre-Submission Stroud District Local Plan document sets out proposed changes to the adopted Policies Map in Appendix D. Most of these map changes are set out within the Local Plan document itself. However, the following maps are not contained within the Local Plan itself but are referred to in Appendix D and are therefore set out here for information.

Amend boundary of Key Employment Site EK17 Renishaw New Mills, Kingswood (Policy E11)

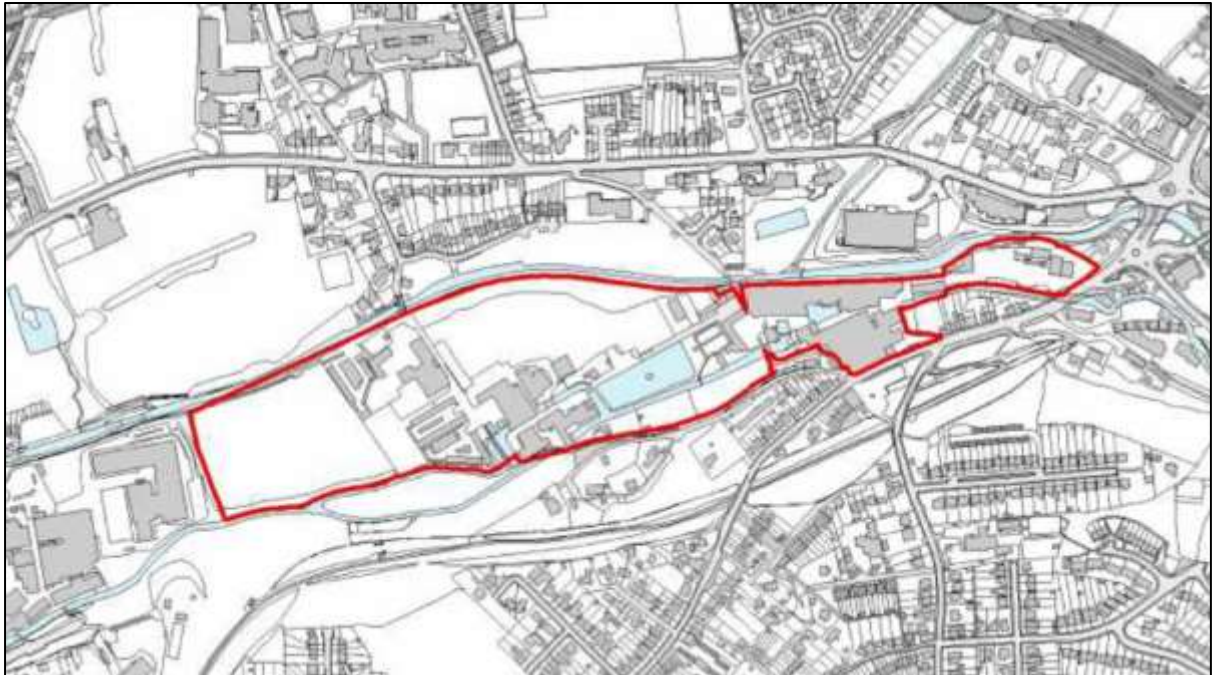
Extend existing area (in green) to include grey area shown below



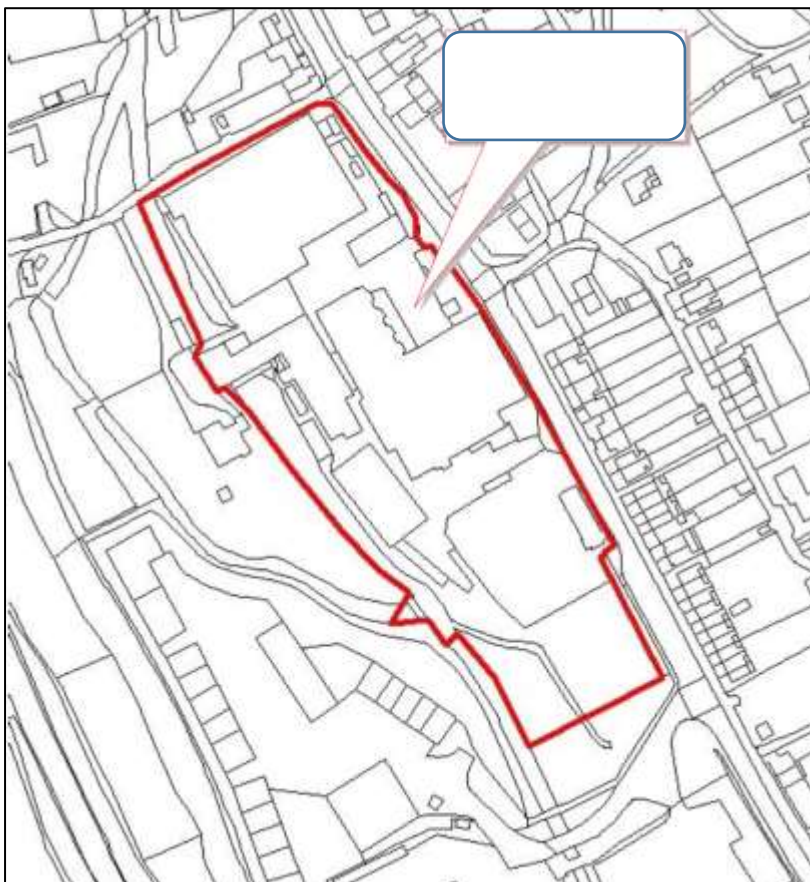
Changes to the Stroud District Local Plan Policies Map

Amend boundary of Regenerating Employment Site ER9 Lodgemore & Fromehall Mills, Stroud (Policy EI2)

Replace existing boundary with boundary shown below



Add Ham Mills, Thrupp as Regenerating Employment Site ER3 (Policy EI2)



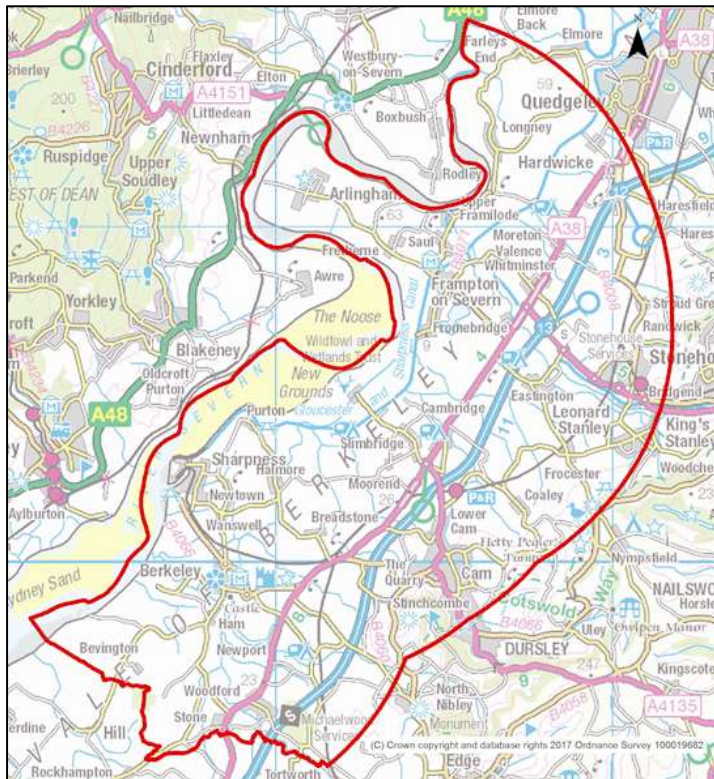
Changes to the Stroud District Local Plan Policies Map

Identify catchment zones for Rodborough Common SAC; the Severn Estuary SAC, SPA and Ramsar; and the Cotswolds Beechwoods SAC (Policy ES6)

Rodborough Common

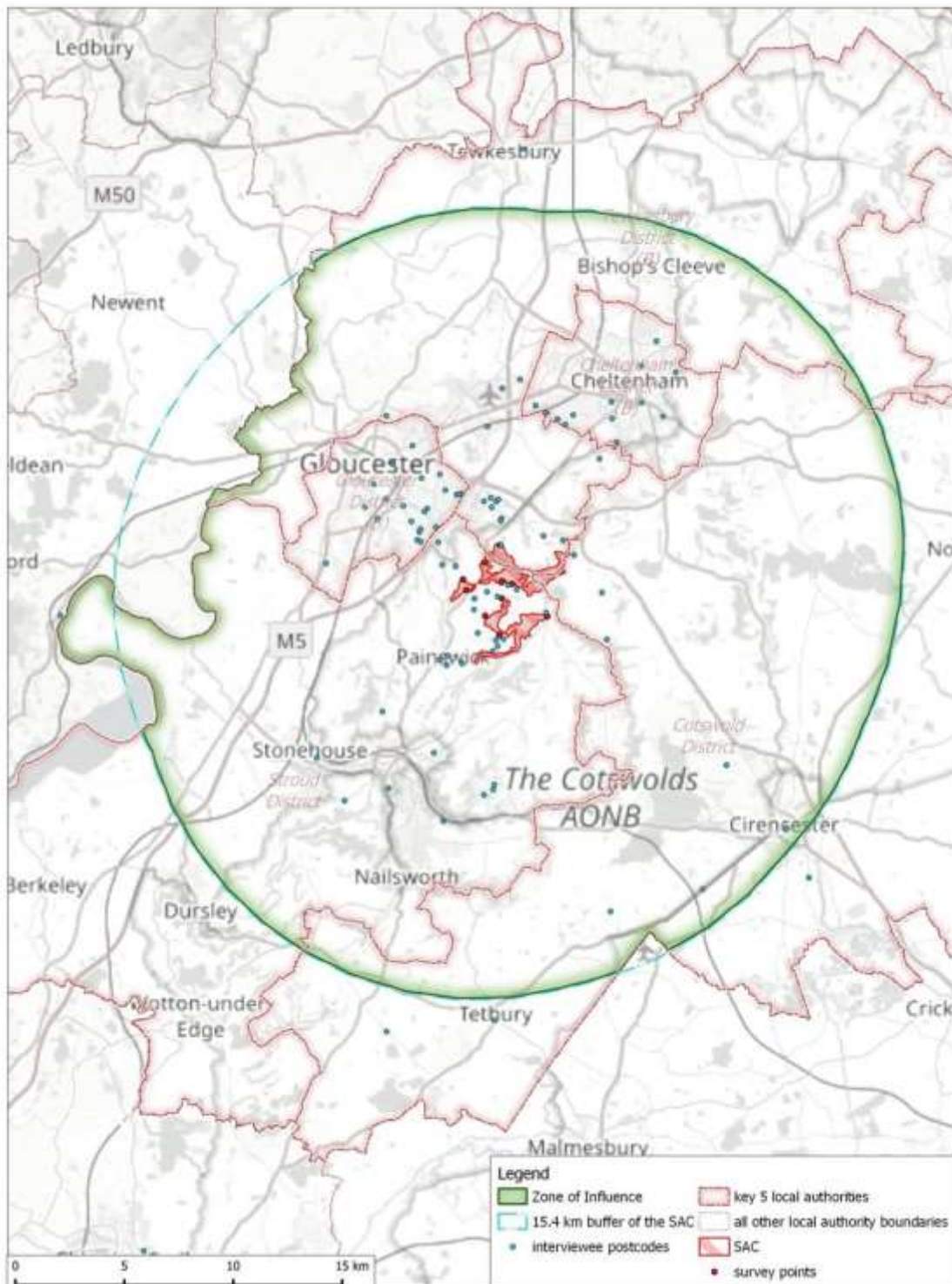


Severn Estuary



Changes to the Stroud District Local Plan Policies Map

Cotswolds Beechwoods



Changes to the Stroud District Local Plan Policies Map

Add landscape sensitivity maps relating to solar and wind renewable energy (Policy ES2)

See maps below taken from Stroud District Renewable Energy Resources Assessment (November 2019)

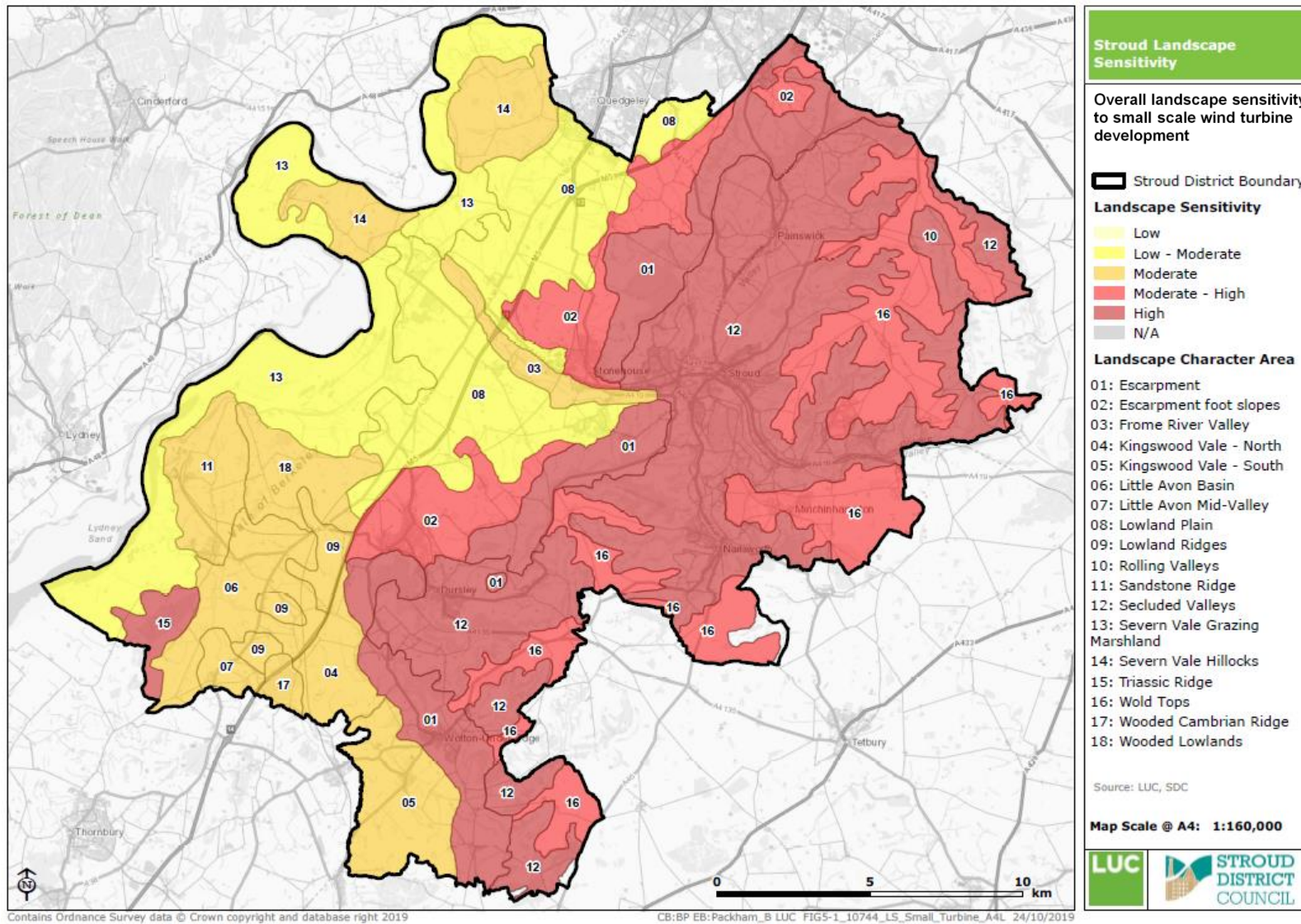


Figure 27: Overall landscape sensitivity to small scale wind turbine developments

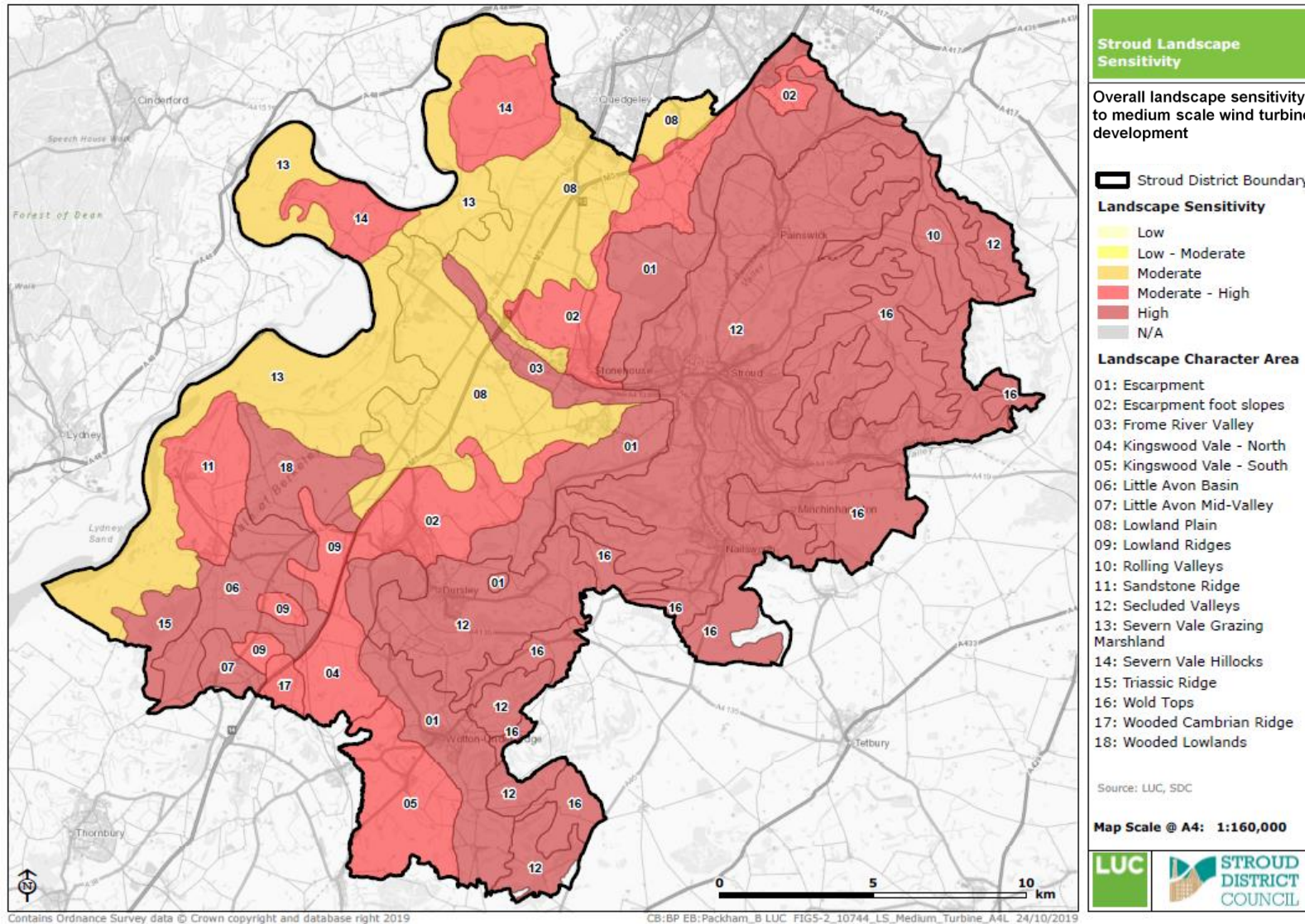


Figure 28: Overall landscape sensitivity to medium scale wind turbine developments

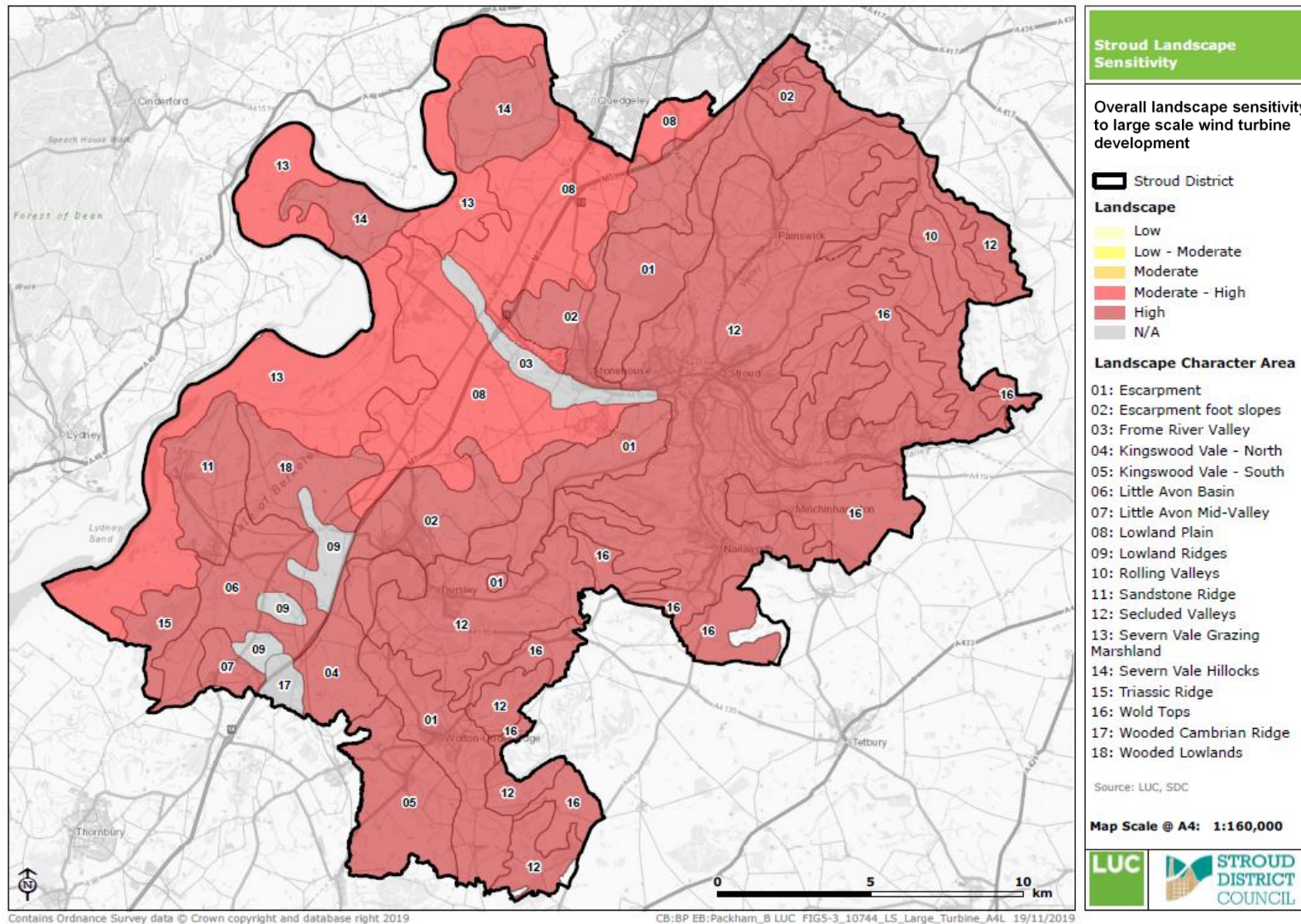


Figure 29: Overall landscape sensitivity to large scale wind turbine developments

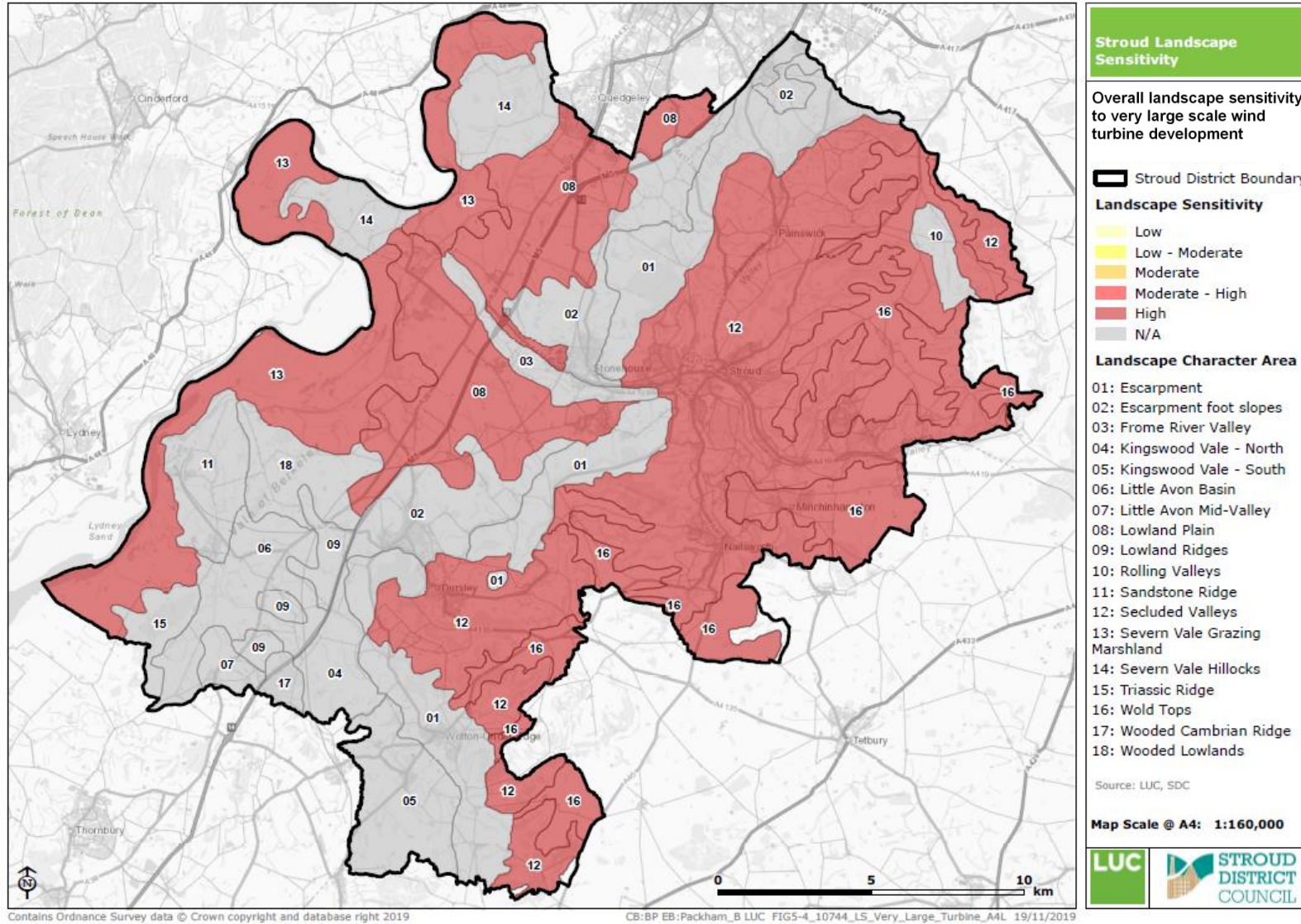


Figure 30: Overall landscape sensitivity to very large scale wind turbine developments

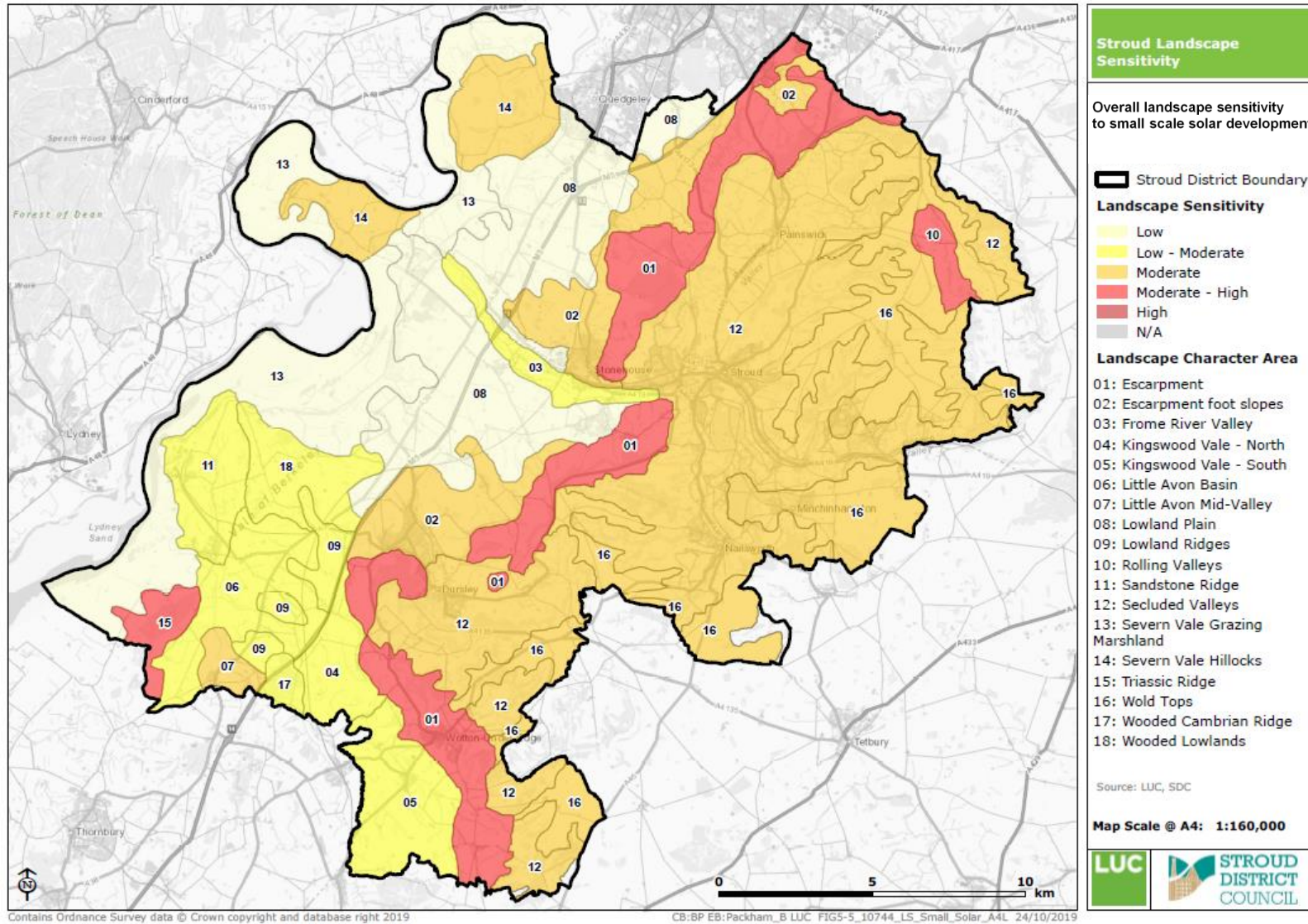


Figure 32: Overall landscape sensitivity to small scale solar developments

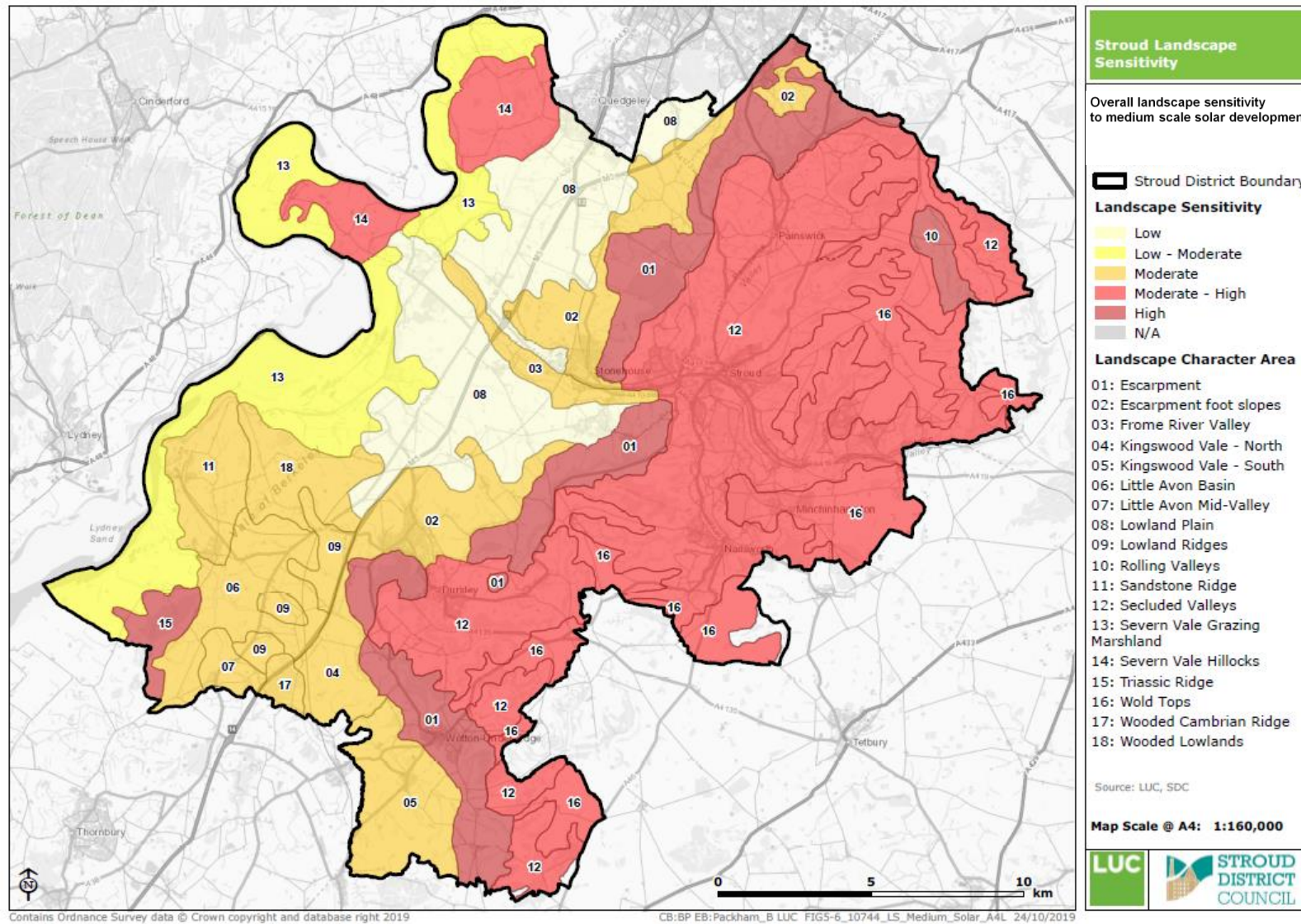


Figure 33: Overall landscape sensitivity to medium scale solar developments

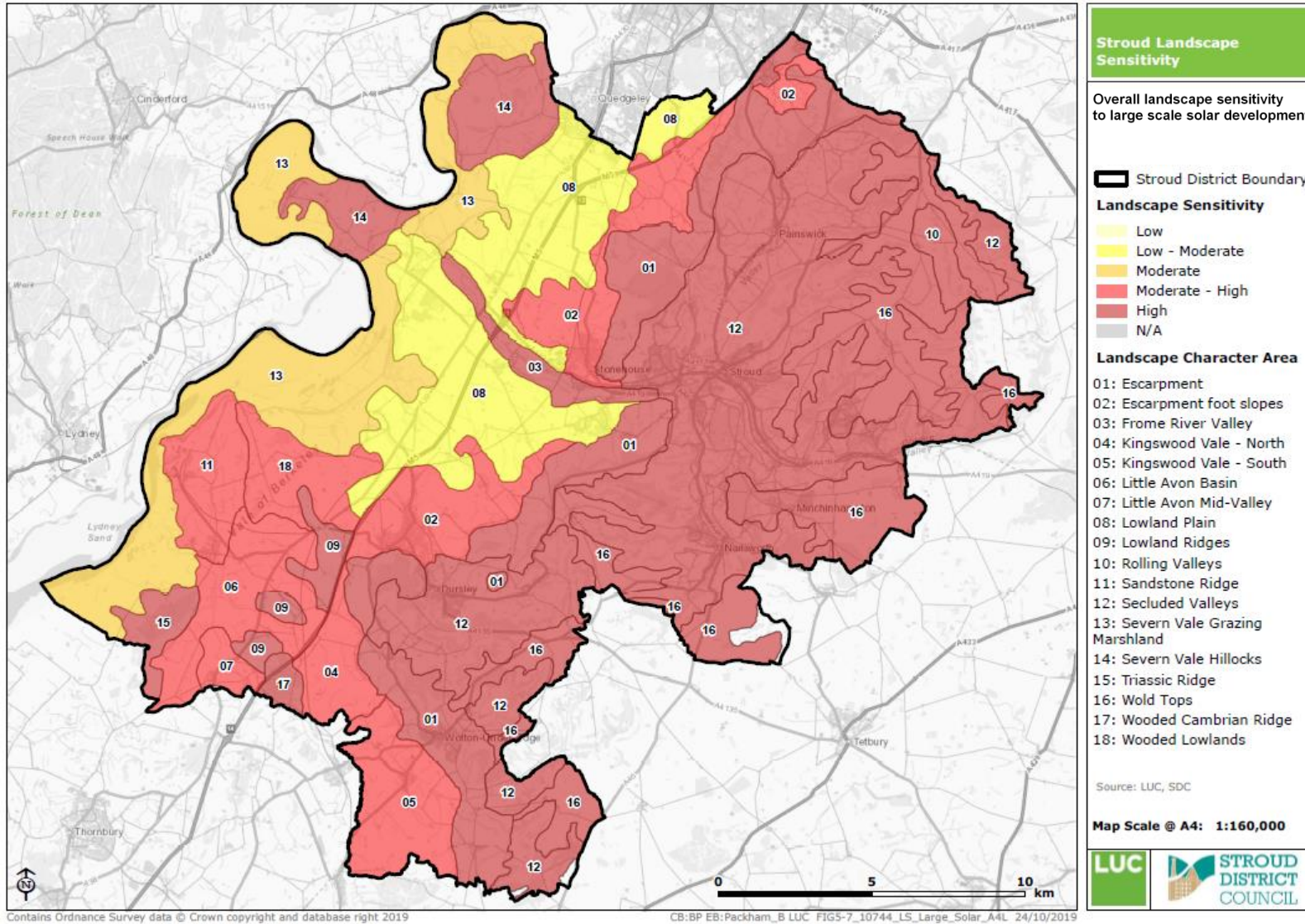


Figure 34: Overall landscape sensitivity to large scale solar developments

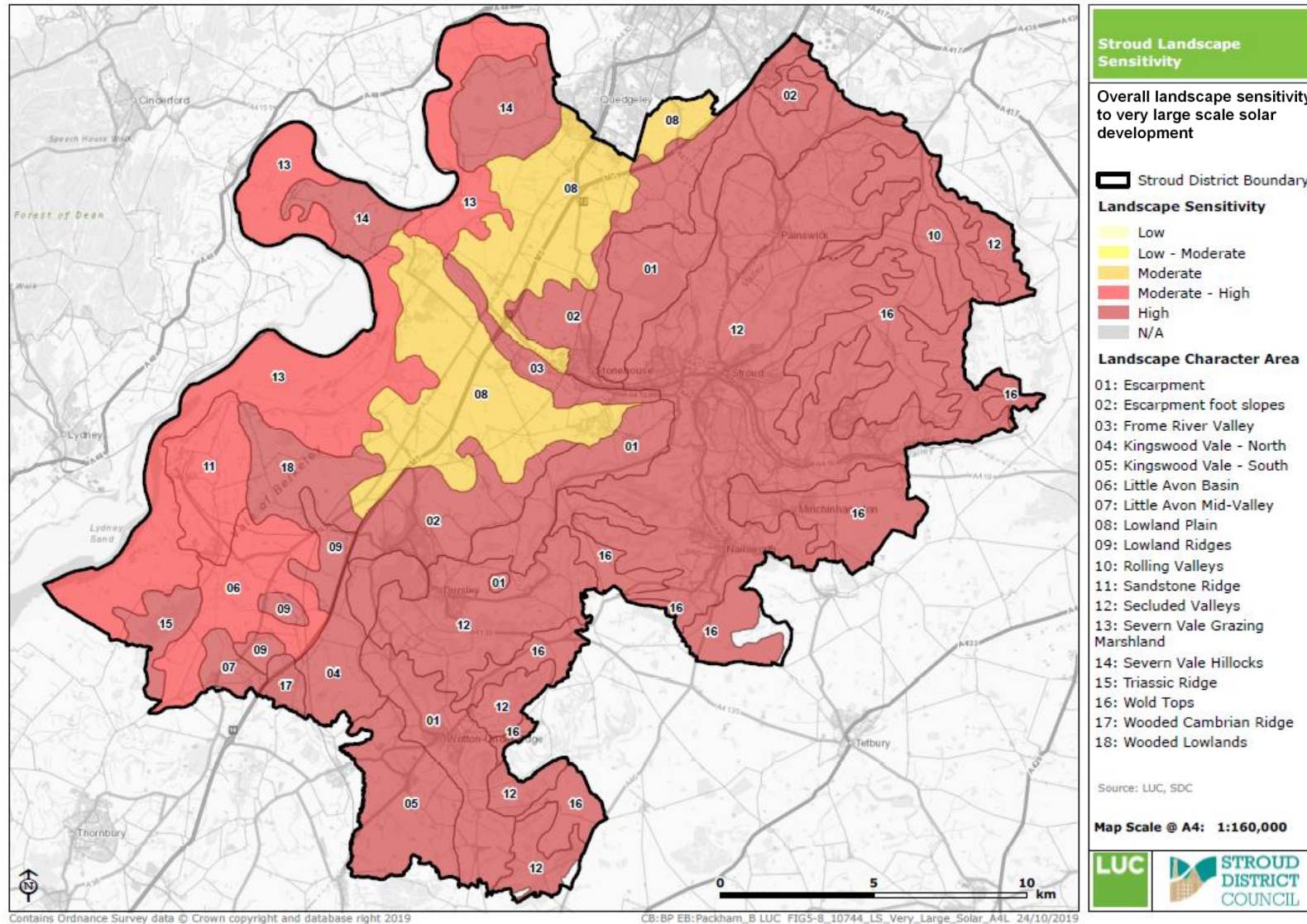


Figure 35: Overall landscape sensitivity to very large scale solar developments