

# Sheltered Modernisation News

A quarterly newsletter for sheltered housing residents

Issue 2 • July 2017

## Moving news

In the last newsletter, we explained why Stroud District Council is modernising its sheltered housing schemes.

We explained why some schemes are no longer suitable for older people and need to be sold or redeveloped, meaning that we need to find new homes for the residents who will be affected.

We've already re-housed 46 people, but if you need to move, or have friends who do, we hope the guide inside will be useful.

Moving home is stressful but our tenant liaison officer Chris will be there to make the process as stress-free as possible.

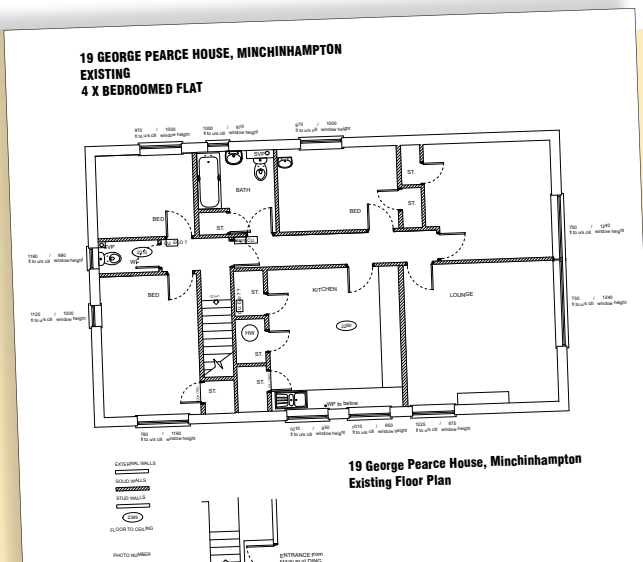
After Pat Wright and Gwen Kerry moved from Ringfield Close to Concord they wrote this letter to Chris:



**Dear Chris,**

Gwen and I would like to tell you how much we appreciate your help before, during and after our move to Concord. We have asked you numerous questions, given you many jobs to do or help with, and you have been polite, friendly and patient throughout. We couldn't have wished for a nicer person. We just hope that your patience wasn't tried too much! Thank you.

**Gwen Kerry and Pat Wright**



## Eight new homes

We'll shortly be converting the old ex-warden homes into new sheltered flats at George Pearce House in Minchinhampton, Grange View in Stroud, Malvern Gardens in Cashes Green and Hamfallow Court near Berkeley. The four homes will become eight new one and two bedroom flats.

We're hoping to start in September and have them ready in early December.

# What happens *if* you need to move home?

If you need to move we'll make sure you know well in advance. Here's what we'll do when the time comes...

## Scheme Meeting

We'll hold a scheme meeting where we will explain the moving process. We'll provide you with you a 'Moving Home' pack which will have all the information you need, but personal contact is important to us too.

## Personal service

**Chris Eadie**, our **tenant liaison officer**, will meet with you individually to discuss where you would like to move to and the type of property that would suit you best. He will identify any

suitable properties owned by the council that come up in your areas of interest and discuss them with you, and give you the first opportunity to view them.

## HomeseekerPlus

While you may wish to stay in one of our properties, you might want to broaden your choices by looking at other social landlords in which case you'll need to register on HomeseekerPlus. Don't worry if you're not registered, Chris will help you through the process.

## Viewing

Once a suitable property becomes available, Chris will arrange for you to view it, and provide transport if necessary.

## Moving

When the time comes to move, we'll help you with this too (see below).

## After you've moved

When you have moved into your new home and you have had an opportunity to settle in, Chris will visit you to make sure that you are happy with everything.

## Chris is here to help

"As part of our sheltered modernisation programme, some of you will need to move home. If this is you, or one of your friends, we hope you'll find the information here helpful.

As part of a caring council I believe that one of the key aspects of my role as a tenant liaison officer is to provide practical and emotional support for tenants through the challenging process of moving home.

I know that changes in a sheltered scheme or moving home is disruptive and can be a complicated process so my job is to take the stress away, and make the process as smooth as possible.

### When you move we'll arrange:

- a payment of £5,800 as soon as you move
- to pay up to £350 for a removal service
- to pay for new carpets and curtains for your new home
- postal redirection

I come and explain everything to all tenants who need to move, but if you have any questions after reading this newsletter, just give me a ring – my details are on the back page."





## Local Updates

### Wotton-Under-Edge

We have successfully found alternative accommodation for all affected residents at Drylease Court.

We're hoping to start work on the new laundry in September, which means it will be available for use in the Autumn.

### Nailsworth

We are still working closely with tenants to move them from Ringfield Close, which is due to be closed in 2018. We have submitted a planning application to demolish eight old homes at Tanners Piece and build 11 brand new older people's apartments.

### Dursley and Cam

In early 2018 we will start to move residents from Cambridge House and in early 2019, from Glebelands.

### Stonehouse

If you're a Sherborne House resident you'll be pleased to know that your scheme will be the first to be improved as part of the sheltered modernisation programme.

We've appointed a team of architects and will shortly select an interior designer to work with residents to provide a range of furnishings and fabrics.

We hope to have some initial designs to share with you towards the end of summer, ready for improvements to start in early 2018.

## You may be interested in...

### Health & Wellbeing Events



**Move it or Lose it** seated exercise classes are specially designed for older people and are open to everyone. The instructor, Becky, will help you find a level that you are comfortable with. The cost is just £3 per session and there's no need to book – just turn up.

#### Find your local class at:

- **Stroud**, Uplands, Grange View, Mondays 2.30pm – 3.30pm
- **Stonehouse**, Sherborne House, Fridays 10am – 11am **NEW CLASS!**
- **Minchinhampton**, George Pearce House, Fridays 12pm – 1pm
- **Hardwicke**, St Nicholas Court, Fridays 2pm-3pm

### Arts and Crafts



If you enjoy arts and crafts, you're welcome to join one of our **Craft & Chat** art sessions. You don't need any artistic ability; just turn up and either take part in the artist-led projects or do your own thing. You don't need to book, and participants just pay £1 towards tea and biscuits.

#### Join a Craft & Chat session at:

- **Stonehouse**, Sherborne House, Wednesdays 10.30am - 12.30pm
- **Stroud**, Grove Park Road, Wednesdays 2.00pm - 3.30pm



## Boccia for all

You can now play table tennis and **Boccia** at your scheme. If you haven't come across Boccia (pronounced 'bot-cha') before it's very similar to boules, and was originally designed for people with cerebral palsy, so it's a great activity if you find other sports too physically demanding. Your site officer can show you how to get started.

### Contact the team...

If you would like any member of the project team to visit you at home during any stage of the process then please get in touch.

**E-mail:** [newhomes.regen@stroud.gov.uk](mailto:newhomes.regen@stroud.gov.uk)

#### Kimberley Read

Project Manager  
01453 754175



#### Chris Horwood

Project Officer  
01453 754540



#### Chris Eadie

Tenant Liaison Officer  
01453 754147

