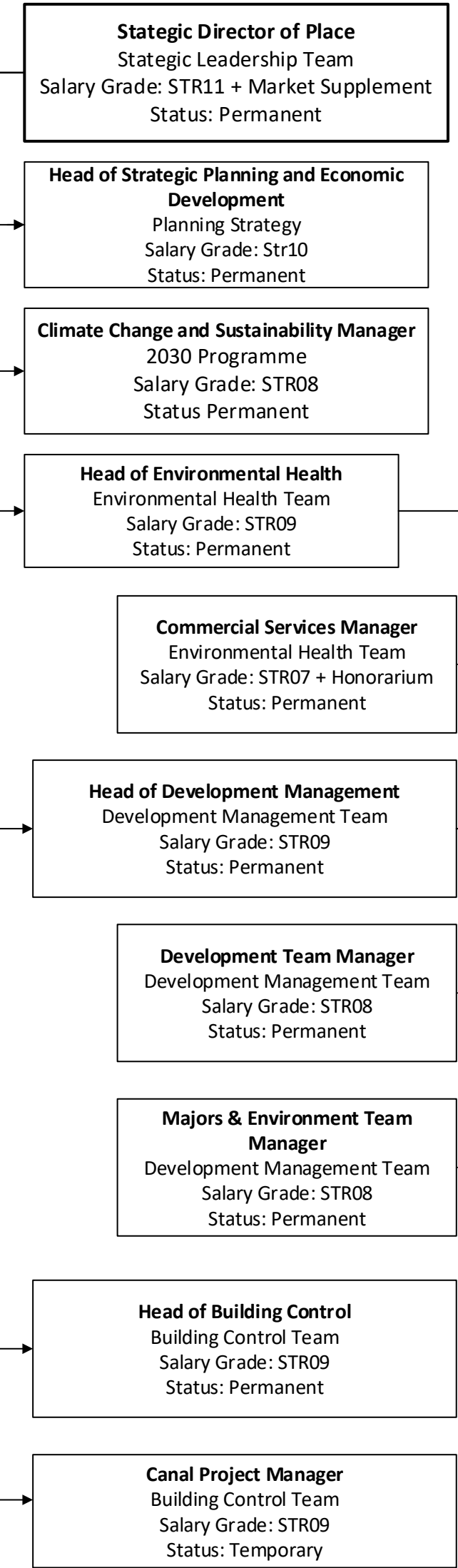
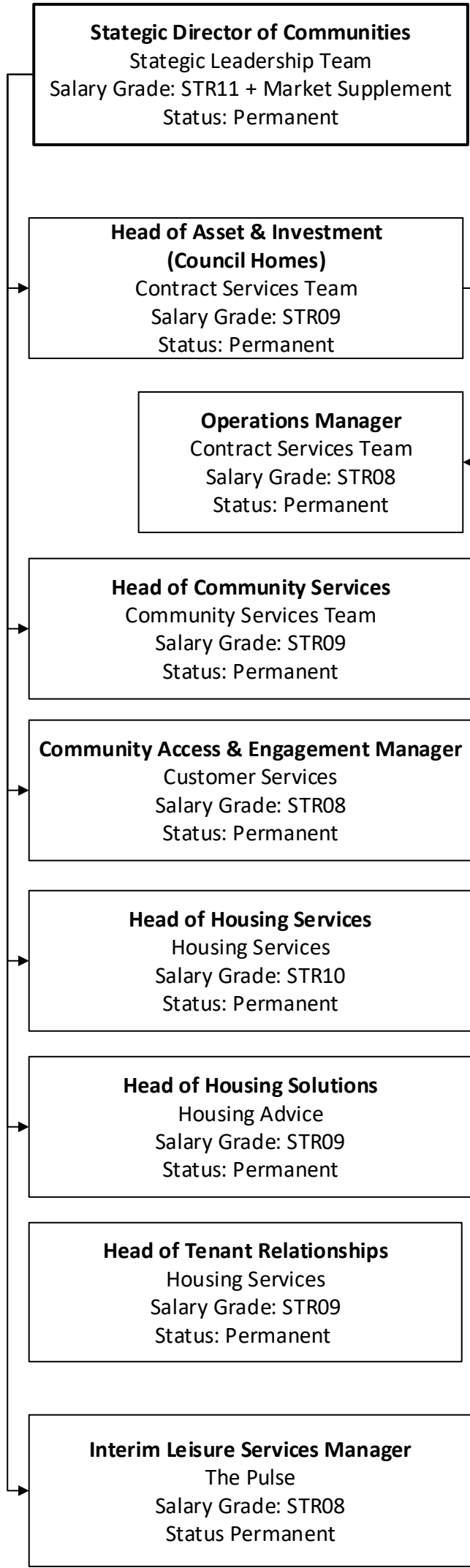


Chief Executive
 Statagic Leadership Team
 Salary Grade: STR12
 Status: Permanent

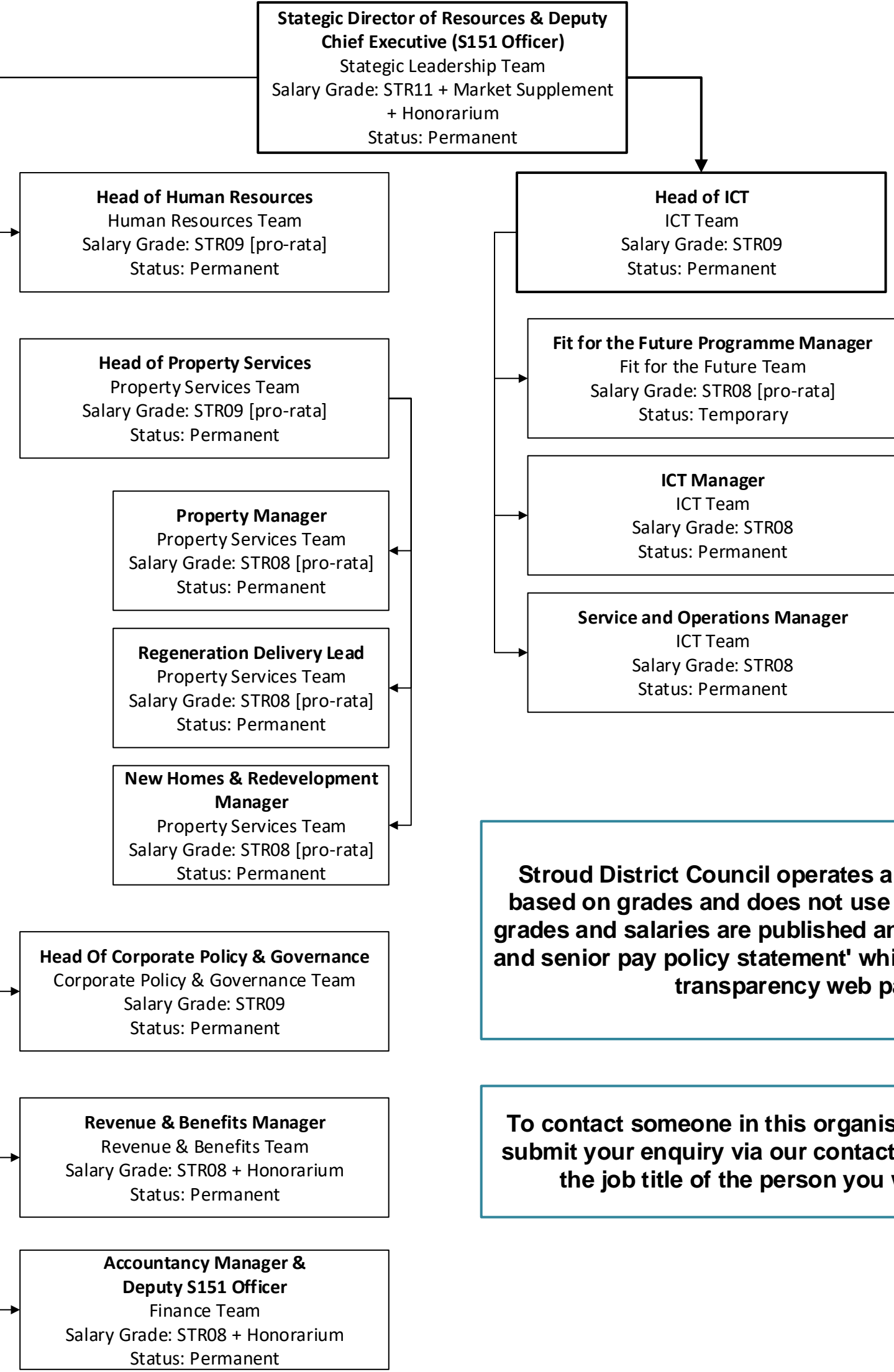
Place Directorate



Communities Directorate



Resources Directorate



Stroud District Council operates a spot salary system based on grades and does not use pay brackets. These grades and salaries are published annually in our 'fair pay and senior pay policy statement' which is available on our transparency web pages.

To contact someone in this organisational chart, please submit your enquiry via our contact us page and include the job title of the person you want to contact.