

STROUD DISTRICT COUNCIL

COUNCIL

THURSDAY, 20 JULY 2023

Report Title	Community Governance Review – Final recommendations
Purpose of Report	To make final recommendations to parish arrangements in the district in relation to the Community Governance Review.
Decision(s)	<p>Council RESOLVES to:</p> <p>a) approve the final recommendations in relation to the Parish/Town Council areas within the Stroud District as set out in this report;</p> <p>b) authorise the Corporate Policy and Governance Manager to:</p> <p>i. request that the Local Government Boundary Commission for England make alteration orders to change district wards to reflect the changes made to parish boundaries; and</p> <p>ii. make a reorganisation of community governance order to implement the changes approved by Council, subject to receiving the necessary consents from the Local Government Boundary Commission for England.</p>
Consultation and Feedback	The Community governance review process was undertaken in accordance with the published guidance and agreed terms of reference. It included two periods of public consultation with stakeholders and other interested parties. Links to the responses received during the consultation period can be found in the Appendices listed below. A Member/Officer Working Group was established to consider all of the consultation responses and produce the draft and final recommendations based on statutory criteria and the responses received.
Report Author	Jenna Malpass, Senior Democratic Services and Elections Officer Email: jenna.malpass@stroud.gov.uk Hannah Emery, Corporate Policy and Governance Manager Email: hannah.emery@stroud.gov.uk
Options	There is no statutory duty placed on the council to undertake community governance reviews, it therefore has the option to cease work at any time. However, given the stage now reached there is a legitimate expectation the review will be taken to its natural conclusion. Therefore, there are no feasible alternative options. The Working Group considered all options when reviewing the consultation responses and were mindful to make appropriate amendments following responses received to consultation on the draft recommendations. All recommendations have also been evaluated against the statutory criteria.

Background Papers	<ul style="list-style-type: none"> • Community Governance Review for Stroud District - Report to Council 20 October 2022 • Terms of Reference • Stroud District Council Community Governance Review – Draft Recommendations • Guidance on Community Governance Reviews – Communities and Local Government and The Local Government Boundary Commission 			
Appendices	Appendix A - Final Recommendation Maps Appendix B - First Stage Consultation Responses Appendix C - Second Stage Consultation Responses Appendix D - Equality Impact Analysis			
Implications (further details at the end of the report)	Financial	Legal	Equality	Environmental
	No	Yes	Yes	No

1. INTRODUCTION / BACKGROUND

- 1.1 The Council at its meeting on the 20 October 2022 resolved to undertake a Community Governance Review (CGR) for the parishes of Cam, Dursley, Eastington, Frampton, Horsley, Hunts Grove, Minchinhampton, Nailsworth, Standish, Stonehouse and Woodchester. Council agreed the Terms of Reference for the review which included establishing a Member/Officer Working Group to review the consultation responses and produce the draft and final recommendations.
- 1.2 The process for carrying out a Review is set out in the Local Government and Public Involvement in Health Act 2007 and associated guidance. Appropriate consultation has been carried out, the views of electors and others in the area have been sought and this report represents the final element of the CGR that the Council commenced in 2022.
- 1.3 If the Council agrees the recommendations, any changes made as a result of the review would take effect for the next elections in 2024. Work will commence immediately to make the necessary Reorganisation Order to bring the changes into effect in time for the May 2024 district and parish council elections. Members will note that, for some of the proposals, the final position is dependent on the agreement of the Local Government Boundary Commission for England.
- 1.4 After the first consultation period closed, a Member/Officer Working Group was established to oversee the review and consider the responses received. The Working Group has conducted a very thorough and extensive review of parish governance arrangements in the areas set out in the report. It has prepared recommendations it considers align to the statutory criteria to better reflect the identity and interests of local communities and provide more effective and convenient local governance.
- 1.5 The Councillors who attended Working Group meetings were Councillors Aldam, Cornell, Stephen Davies, Evans, John Jones, Hurst, Patrick, Ross (Chair), Ryder and Turner.
- 1.6 A brief summary of the recommended changes is included in the table below, detailed information regarding the recommendations can be found in sections 6 to 13.

Area	Final Recommendations
Cam	<ul style="list-style-type: none"> • A Community Governance Review for Cam parish is held before 2028
Dursley	<ul style="list-style-type: none"> • No changes

Eastington	<ul style="list-style-type: none"> • A new parish of Great Oldbury will be created with SEVEN parish councillors • Changes are made to boundaries of the existing parishes of Eastington, Standish and Stonehouse to accommodate the Great Oldbury Parish • The number of Parish Councillors for Eastington is decreased to NINE
Frampton	<ul style="list-style-type: none"> • The number of Parish Councillors for Frampton-on-Severn Parish Council is increased to TEN • A Community Governance Review for Frampton-on-Severn Parish is considered in the future if the development at Oatfield becomes established
Horsley	<ul style="list-style-type: none"> • No changes
Hunts Grove	<ul style="list-style-type: none"> • The number of Parish Councillors for Hunts Grove is increased to NINE
Minchinhampton	<ul style="list-style-type: none"> • A Community Governance Review for Minchinhampton Parish and Brimscombe and Thrupp Parish is held before 2028
Nailsworth	<ul style="list-style-type: none"> • No changes
Standish (See Eastington for Great Oldbury Recommendations)	<ul style="list-style-type: none"> • No changes are made to the councillor allocations for Standish Parish Council • A Community Governance Review for Standish Parish is considered in the future the development at site PS19a becomes established
Stonehouse (See Eastington for Great Oldbury Recommendations)	<ul style="list-style-type: none"> • No changes are made to the councillor allocations for Stonehouse Town Council • The warding arrangements of the Town of Stonehouse are redrawn to create three wards, North, Central and South Wards and the allocation of Councillors is redistributed across the wards
Woodchester	<ul style="list-style-type: none"> • No changes

2. BACKGROUND TO THE 2022/23 REVIEW

- 2.1 The council has the power to conduct a review of any part of the council's area at any time. The Local Government Boundary Commission for England recommends that it is good practice for a Principal Council to consider conducting a review of local government arrangements every 10 to 15 years as well as in circumstances where there has been significant housing development.
- 2.2 A full CGR took place across the whole of the Stroud district in 2018/2019 and several changes were implemented across several parish and town council areas. When approving the final recommendations of the 2019 review, Council resolved for a further CGR to be undertaken for the parishes that contain the Great Oldbury development (Eastington, Standish and Stonehouse) by the end of 2023. At the time of the last review, Great Oldbury was a new development, and it was therefore agreed that any decisions made may not reflect the identity of a community which was yet to have established.

- 2.3 Ahead of commencing this CGR, all Parish and Town Councils were asked if there had been any significant changes to their electoral arrangements since 2019 and whether their parish or town council areas should be considered for a CGR, all areas who responded to the request were included as part of the review. Within their request for a CGR to take place, Nailsworth Town Council submitted proposed boundary changes which impacted neighbouring parish boundaries including Horsley, Minchinhampton and Woodchester. As a result of this, Horsley, Minchinhampton and Woodchester Parish areas were also included in this CGR to allow for consultation to take place with the parish councils and residents.

3. COMMUNITY GOVERNANCE REVIEW CRITERIA

- 3.1 A Community Governance Review offers the opportunity to put in place stronger community engagement, more cohesive communities, better local democracy and more effective and convenient delivery of local services. A CGR can consider a number of issues, including whether to:
- Abolish or create a new parish (this may be where an area is not currently parished, or as a result of bringing together two or more existing parishes);
 - Change the name of a Parish or set the style of a new Parish Councils;
 - Alter the boundary or warding arrangements of one or more existing Parish;
 - Bring a number of Parishes together as a grouped parish council; and
 - Alter the number of seats on an existing Parish Council.
- 3.2 In preparing any recommendations and making any decision respectively, the Committee and Full Council must take account of the statutory criteria for reviews and the need to ensure that community governance within the areas under review:
- Reflects the identities and interests of the community in that area, and
 - Is effective and convenient
- 3.3 In doing so, the Review is required to take into account:
- The impact of community governance arrangements on community cohesion; and
 - The size, population and boundaries of a local community or parish.
- 3.4 There is no limit to the maximum number of Councillors a Parish and Town Council may have and there are no strict guidelines in terms of the number of councillors per elector. As there is no definitive number of Councillors per electorate, the CGR Working Group adopted the guidelines proposed by Aston Business Schools review published in 1992 of average Council sizes. This approach was chosen to allow maximum flexibility and to ensure that each area could be considered on its own merits whilst taking into consideration the broad pattern of existing council sizes.
- 3.5 The Council may not alter the external boundary of the Stroud District or any other principal council. A Community Governance Review cannot change the Electoral Wards of Stroud District Council. However, it can request those Wards or Electoral Divisions be amended by the Local Government Boundary Commission for England ("The LGBCE"), who are responsible for such decisions, to align to any changed parish boundaries.

4. CONSULTATION AND DRAFT RECOMMENDATIONS

- 4.1 The Council complied with the statutory consultative requirements by:
- Consulting local government electors and residents within the areas;

- Consulting any other persons or bodies (including Cotswold District Council) which appear to the council to have an interest in the CGR;
- Notifying and consulting with Gloucestershire County Council;
- Taking into account any representations received in connection with the CGR.

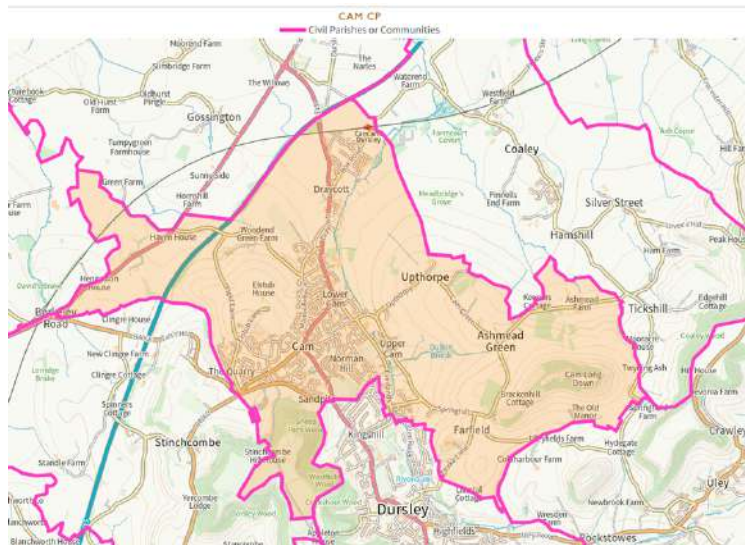
- 4.2 The review was carried out as per the agreed Terms of Reference which included 2 public consultation stages, the Council received over 170 responses to the consultations. For both stages of consultation, responses were invited through the website, online survey, email, post, in person and by telephone. The relevant Parish/Town Council areas, local residents and stakeholders were invited to respond.
- 4.3 The first stage consultation was held between 31 October 2022 and 29 January 2023. Interested parties were invited to make proposals for changes to parish boundaries or other issues relating to parish arrangements, such as the number of councillors, parish warding or grouping of parishes. Following the close of the consultation, the Working Group prepared the draft recommendations which were guided by the consultation responses and statutory criteria.
- 4.4 The draft recommendations were published on the 1 March 2023 commencing the second stage of the consultation period which closed on the 26 April 2023. The Draft Recommendations were supplied to all of the original consultees and to anyone who had requested as part of the initial consultation to be kept informed of the reviews progress.
- 4.5 The second stage consultation sought the views on the suitability of the draft recommendations for each area. Although not a requirement of the legislation, the Committee wrote directly to households in the Great Oldbury area and the hamlets of Westend, Nastend and Nupend where the formation of a new parish was being considered. Direct letters for these areas were deemed appropriate to ensure that the Working Group was able to adequately consider the views of local residents.
- 4.6 In preparing these Final Recommendations, the working group has been mindful of the initial submissions that were received which can be found at Appendix B, and the submissions received during the second public consultation on the Council's draft recommendations which can be found at Appendix C. The Working Group has balanced these submissions against the wider requirements and duties that are placed upon it in the 2007 Act.

5. FINAL RECOMMENDATIONS

- 5.1 The Working Group has carefully considered the 114 responses to the second stage consultation. In the majority of cases the Working Group proposes that Council confirms its draft recommendation. This reflects the fact that in relation to many of the proposals there was no response to the consultation or the only responses received were supportive. In a few cases, the Working Group proposes moving away from the draft recommendation in light of the consultation responses received. In such cases it proposes an amendment that takes on board the views expressed.
- 5.2 The following sections of this report detail the first stage consultation responses, draft recommendations (which were subject to consultation), a summary of representations received and the Working Group's conclusions and final recommendations for each parish. It is recommended that the draft recommendations are read alongside these final recommendations for a fuller picture of the decision making of the Working Group.
- 5.3 Except as set out below, the Working Group recommends that no new parishes or parish councils should be constituted, no existing parishes or parish councils should be abolished,

no other areas of existing parishes should be altered, no parishes should be renamed and no other changes to existing parish arrangements should be made as part of this Review.

6. CAM PARISH COUNCIL FUTURE COMMUNITY GOVERNANCE REVIEW



6.1 First stage consultation

6.1.1 Cam Parish Council made a detailed submission requesting a change to the parish warding arrangements to create an additional ward (North Ward) and increase the number of Councillors. Further submissions were made including one request to change the style of parish to 'Town', this change cannot be implemented by a CGR.

6.2 Draft recommendations

6.2.1 The Working Group used the Aston Business School guidelines to help evaluate the request for an additional Councillor. Cam parish was already at the maximum number of Councillors as per the electorate size and indicated by the Aston Business School guidelines. The Working Group did not feel as though they had received sufficient evidence to consider going beyond the current scale of representation and therefore did not wish to recommend an increase in the number of Councillors. The Working Group considered at length the proposals for an additional parish ward called 'North Ward', they agreed with the request in principle, however, decided that it would be premature to make any changes at the current time. The Working Group wanted to be able to listen to and understand the views of those residents who would be living within the proposed ward to ensure that any changes made reflected community identity. As much of the development in this area had not yet taken place the Working Group agreed that time should be allowed for a community to develop further so future residents could be part of the decision on the future of their parish.

6.2.2 The Working Group therefore recommended no changes but suggested that a future CGR could be carried out if required within the next five to seven years.

6.3 Second stage consultation

6.3.1 Two responses were received, the response from the clerk advised that the Parish Council were disappointed that no changes had been recommended but appreciated the opportunity to review this again in the future. A response was also received from a Parish Councillor which suggested that the Cam Parish boundary should also be altered to include the potential Wisloe development towards the motorway.

6.4 Final recommendations

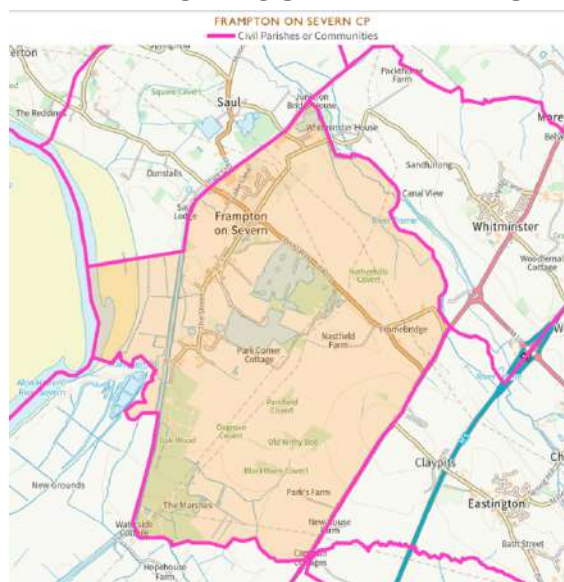
6.4.1 The Working Group considered both responses received but felt that more evidence was needed to make any changes to the warding arrangements. Furthermore, to make any recommendations regarding the external parish boundary neighbouring parishes would need to be consulted with and therefore the change to any external parish boundaries which could not be completed within the timescale of this CGR. The Working Group believed that Cam could be considered as part of a CGR prior to the next scheduled local elections in May 2028.

6.4.2 FINAL RECOMMENDATIONS

6.4.3 It is RECOMMENDED that the following community governance and electoral arrangements be approved;-

- a) A Community Governance Review for Cam parish is held before 2028.

7. FRAMPTON-ON-SEVERN PARISH COUNCIL INCREASE IN COUNCILLORS



7.1 First stage consultation

7.1.1 Frampton-on-Severn Parish Council along with two parish councillors made a submission requesting an increase to number of Councillors by one due to the potential increase in the size of electorate from new developments and the workload of the active Parish Council. A submission was also received requesting a new parish ward in the Oatfield area due to expected development.

7.2 Draft recommendations

7.2.1 The Working Group were satisfied that an additional councillor would allow the parish to continue to provide good services and governance for their increasing electorate. The Parish Council had quickly filled vacancies in the past which highlighted a keen interest in parish matters for residents.

7.2.2 The Working Group were satisfied that an additional councillor would still be within the scale of representation.

7.2.3 The Working Group recommended no changes to the warding arrangements but suggested that a CGR could be carried out in the future once any developments near Oatfield Road had been established.

7.3 Second stage consultation

7.3.1 Frampton parish council supported the draft recommendations.

7.4 Final recommendations

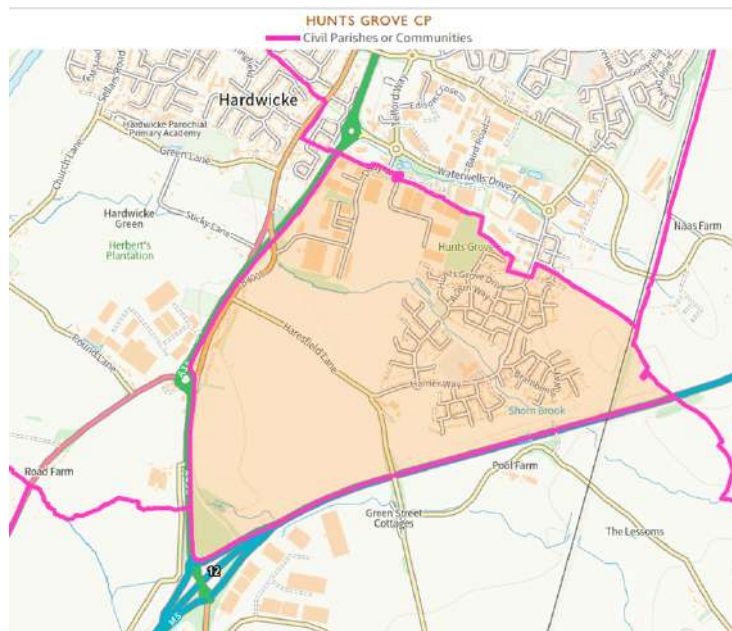
7.4.1 The Working Group agreed that the proposed increase from nine to ten councillors would ensure that effective and convenient community governance continued. They also agreed that the Council should look to hold a CGR in the future once a community is established at the Oatfield site.

7.4.2 FINAL RECOMMENDATIONS

7.4.3 It is RECOMMENDED that the following community governance and electoral arrangements be approved;

- a) The number of Parish Councillors for Frampton-on-Severn Parish Council is increased to TEN.
- b) A Community Governance Review for Frampton-on-Severn Parish is considered in the future if the development at Oatfield becomes established.

8. HUNTS GROVE PARISH COUNCIL INCREASE IN COUNCILLORS



8.1 First stage consultation

8.1.1 Hunts Grove Parish Council made a submission requesting an increase to the number of Councillors to eleven due to the size of electorate, the increasing workload of Councillors and the increasing number of services provided by the Parish Council. A large number of submissions in support of an increase in the number of Councillors were also received

along with four requests for no changes. Two further submissions were received, one requesting the Council remains as it is and does not merge with another parish and one to group the parish.

8.2 Draft recommendations

8.2.1 The Working Group considered at length the submissions for Hunts Grove parish and took into account the large increase in electorate that had occurred due to the ongoing development in the area and the increase in services being provided by the Parish. The Parish Council had been formulated as a result of the last Community Governance Review in 2019 and due to the significant increase in electorate was now outside the recommended scale of representation.

8.2.2 The Working Group were satisfied that additional councillors were necessary to continue to provide effective and convenient governance, robust parish arrangements and allow the Parish Council to take on additional services, if and when required. They considered the size of the current Parish Council alongside parish councils of a similar size and nature and the Aston Business School guidelines. They recommended that an increase to nine parish councillors would be within the scale of representation, allow for good governance and help to ensure that the Parish Council remained quorate.

8.3 Second stage consultation

8.3.1 Hunts Grove parish council supported the draft recommendations however they requested that the number of Councillors would be considered again after 2 years due to the number of services the council expected to be managing in the future.

8.4 Final recommendations

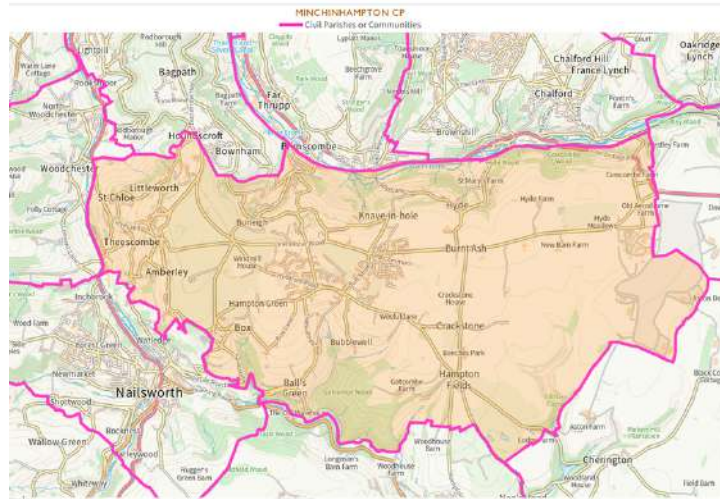
8.4.1 The Working Group carefully considered the original recommendation and response to the consultation. A member of the Working Group who was also a member of the Parish Council provided further information and advised that the Parish Council was considering the option to take on further services from the management company over the next few years but that this was still in the early planning stages. Due to the large increase in councillor numbers already recommended, the Working Group didn't feel that they had enough evidence to warrant recommending a larger increase at this stage. Due to the work involved in carrying out a CGR, they also did not want to commit the Council to carrying out a further CGR in 2 years time but agreed that contact should be made with the Parish Council when the Council next carries out a CGR so that the number of councillors could be considered again.

8.4.2 FINAL RECOMMENDATIONS

8.4.3 It is RECOMMENDED that the following community governance and electoral arrangements be approved;-

- a) The number of Parish Councillors for Hunts Grove is increased to NINE.

9. MINCHINHAMPTON AND BRIMSCOMBE PARISH COUNCIL FUTURE COMMUNITY GOVERNANCE REVIEW



9.1 First stage consultation

9.1.1 Minchinhampton Parish Council had been included as part of the CGR due to a request from Nailsworth Town Council to consider its boundaries. Following Nailsworths withdrawal of their initial proposal, Minchinhampton Parish Council requested that no changes were made to the parish arrangements. Two further submissions were submitted by residents supporting no change. One submission was made requesting that some of the parish wards were made into their own parishes and the number of councillors be reduced. A submission was also made by Brimscombe and Thrupp Parish Council requesting an amendment with Minchinhampton (Brimscombe Ward) stating the neighbourhoods and new developments within the Brimscombe Port area relied on the services of Brimscombe and Thrupp Parish. A number of submissions from local residents in this area supported Brimscombe and Thrupp Parish Councils submission.

9.2 Draft recommendations

9.2.1 The Working Group felt conflicted when considering the proposal for a boundary change between Brimscombe and Thrupp and Minchinhampton Parish Councils. The Group were aware that a similar proposal had been put forward by Brimscombe and Thrupp Parish Council as part of the previous review held in 2019. At that time, it was not felt that satisfactory evidence had been submitted to justify this amendment. On this occasion, the council has received an indication of support of this proposal through the number of submissions from residents. However, the lack of consultation with Minchinhampton Parish Council and the fact that Brimscombe and Thrupp Parish was not included in the Terms of Reference meant that the Working Group did not feel that it was in a position to be able to make a recommendation as part of this Community Governance Review.

9.2.2 The Working Group felt that it would be more appropriate to review the boundary once the Wimberley Mills housing development had been completed to allow the residents of the development the opportunity to be involved in any consultation. The Working Group therefore recommended that the boundary form part of a future CGR after the elections in May 2024 and before the next scheduled elections due to be held in 2028.

9.3 Second stage consultation

9.3.1 No response was received from Minchinhampton Parish Council. One submission was received on behalf of Brimscombe and Thrupp Parish Council which supported the recommendation to hold a CGR before the local elections in 2028.

9.4 Final recommendations

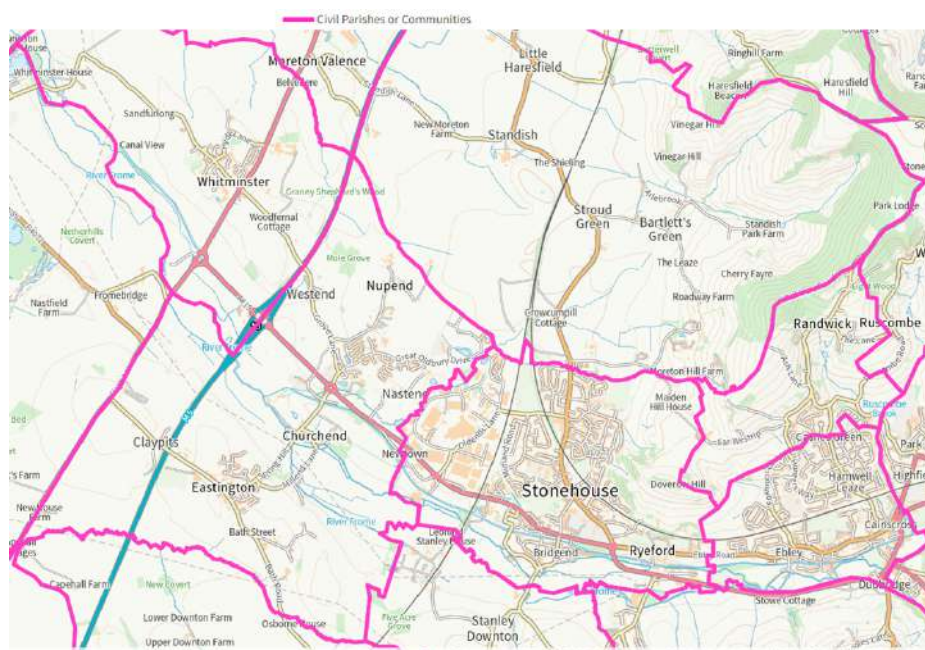
9.4.1 The consultation response demonstrated Brimscombe and Thrupp Parish Councils acceptance that any changes to the boundary needed to be carried out with a consultation of both parish councils and residents of the area. The Working Group therefore decided not to amend their recommendation.

9.4.2 FINAL RECOMMENDATIONS

9.4.3 It is RECOMMENDED that the following community governance and electoral arrangements be approved;-

- a) A Community Governance Review for Minchinhampton Parish and Brimscombe and Thrupp Parish is held before 2028.

10. CREATION OF GREAT OLDBURY PARISH COUNCIL AND AMENDMENTS TO STONEHOUSE TOWN, EASTINGTON AND STANDISH PARISH



10.1 First stage consultation

10.1.1 Proposals were submitted by Eastington Parish Council, Keep Eastington Rural Community Group, Stonehouse Town Council and the Great Oldbury Community Group alongside a limited number of responses from local residents. The submissions from the Great Oldbury Community Group, Stonehouse Town Council and Keep Eastington Rural supported the creation of a new Parish for the Great Oldbury area. Eastington Parish Council put forward a number of options to be considered but advised that it would support the creation of a new parish if a direct consultation with residents was carried out.

10.2 Draft recommendations

10.2.1 The Working Group considered all options submitted and assessed in great detail whether Great Oldbury had an established community identity and whether it would benefit from the creation of a Parish Council.

- 10.2.2 The Working Group did not consider it appropriate for the whole of Great Oldbury to be transferred into Eastington or Stonehouse as the Great Oldbury Community Group had indicated their individuality and differences with their neighbouring parishes and had expressed a strong wish to form their own parish.
- 10.2.3 The Working Group believed that the submissions received from residents, community groups and neighbouring parishes demonstrated that the Great Oldbury community were strongly in support of establishing a new parish. This would give the electorate an independent voice and a structure for taking community action for its environment and facilities and independence in its own tax raising powers.
- 10.2.4 Section 93 of the Local Government and Public Involvement in Health Act 2007 identified three 'tests' which would need to apply when considering the creation of a new parish council.
- a) Community Identity – this was demonstrated in the detailed submissions received in support of a new parish which indicated a strong community identity, furthermore the creation of the new parish was supported by district ward councillors and neighbouring parishes.
 - b) Effective and convenient local government – the current boundary results in Great Oldbury being split between three parishes, the creation of a new parish using clear boundaries would establish more effective and convenient local government. There are also parish councillors from the Great Oldbury area elected to Eastington Parish Council indicating a level of democratic engagement. However, Great Oldbury is currently split across 2 District Wards, the majority of the site sits within the Severn District Ward with a small portion towards the eastern boundary within Stonehouse District Ward. Alterations to the District Ward boundaries can only be made by the Local Government Boundary Commission for England.
 - c) Adequate infrastructure or meeting points – Great Oldbury has begun to develop new infrastructure, there is currently a Primary School, playing fields and a small play area and there are plans for a community building.
- 10.2.5 No response was received from Standish Parish Council during the initial consultation. The Working Group considered the section of the Great Oldbury development site that was included within Standish Parish. As this had been identified as an employment site rather than residential properties, the Working Group felt that it should remain in Standish to avoid unnecessary alteration of the parish boundaries.
- 10.2.6 The recommendation for a new parish at Great Oldbury would result in boundaries that were not coterminous with the District Ward Boundaries. The recommendation therefore includes a request to the LGBCE to amend the boundaries of Severn and Stonehouse District Wards.
- 10.2.7 The Working Group also considered the scale of representation and proposed that the new parish would contain seven councillors.
- 10.2.8 Over time, significant development growth around Great Oldbury had changed the character of the area from that of the rest of the parish, effective governance would be improved for the area if it had its own Parish Council.

10.3 **Second stage consultation**

- 10.3.1 Eastington Parish Council, Stonehouse Town Council and Keep Eastington Rural responded to the consultation in support of the draft recommendations and the creation of the Great Oldbury Parish Council. Standish Parish Council submitted a response advising that the employment site within Standish Parish area was an integral part of the Great Oldbury development and therefore requested that it become part of the new parish along with the residential development.

- 10.3.2 105 submissions were received from residents of Great Oldbury, 93 were in support of the creation of a new parish and 10 were against and 2 were in part support of the recommendations.
- 10.3.3 Those in support of the formation of a new parish for Great Oldbury noted that as a result of the significant development that had taken place on the Great Oldbury site its identity and interests were very different to the parish of Eastington and that a parish council solely for the area of Great Oldbury would be more relevant, would be able to better serve the interests of local residents and reflect the identity of the area more appropriately.
- 10.3.4 Comments opposed to the recommendation included that the area was suitably served by the existing parish council, that wider community ties to Eastington had been formed and there was no compelling reason to make a change.

10.4 Final recommendations

- 10.4.1 The Working Group note the responses from the small hamlets of Westend, Nastend and Nupend and agree that these remained of a distinct character compared to the more built up area of the nearby estate. Under the criteria it was therefore appropriate for these areas to remain within Eastington Parish.
- 10.4.2 Having considered the evidence, statutory criteria, guidance, other relevant information and consultation responses, the Working Group therefore agree that the Great Oldbury residents would be better served by their own parish. The proposal had passed the three 'tests' and the balance of evidence indicated that the community had sufficient grounds and support to progress Great Oldbury to formally becoming a parish council.
- 10.4.3 The creation of Great Oldbury Parish Council is the best way of recognising and developing further the community cohesion and identity within the area. It will offer strong and accountable local government and community leadership with the opportunity to take the lead locally on specific issues and represent the local community.
- 10.4.4 Accordingly, the Working Group recommend that the LGBCE be requested to amend the Severn and Stonehouse District Ward Boundaries to be coterminous in order for the small number of properties and land currently within Stonehouse Ward be transferred and absorbed into Severn District Ward.
- 10.4.5 One of the considerations of the LGBCE is the variances in the number of electors each councillor represents, with the aim to ensure there is equal representation across the Stroud district. The LGBCE has laid out criteria for initiating an electoral review which includes:
- more than 30% of a council's wards/divisions having an electoral imbalance of more than 10% from the average ratio for that authority; and/or
 - one or more wards/divisions with an electoral imbalance of more than 30%; and
 - the imbalance is unlikely to be corrected by foreseeable changes to the electorate within a reasonable period.
- 10.4.6 The Severn District Ward is already showing a variance of greater than 30% and the transfer of additional electors from Stonehouse to Severn would increase the variance to approximately 37%. Because of this variance, it is possible that the LGBCE may reject the request to amend the ward boundaries and instead initiate a full District Ward review following the May 2024 Elections. In this scenario, the properties currently within Stonehouse district would still be recommended to form part of Great Oldbury parish but a new polling district would need to be created to ensure they remained part of Stonehouse district ward. Whilst this is not an ideal situation, it would be a temporary measure until the LGBCE had completed their review of the district wards to rebalance the current electoral variance.

10.4.7 Whilst producing the final recommendations we sought the views of the LGBCE so that we could determine the likelihood of them agreeing to alter the district ward boundaries with the current and projected variances. The LGBCE would not provide a determination until the final recommendations has been approved by Full Council. If Council is minded to agree the recommendations, we will contact the LGBCE as soon as possible to ensure they are given sufficient time to review the request.

10.4.8 The new parish boundaries will come into force at the May 2024 district and parish council elections and will apply to the electoral register published on the 1 December 2023.

10.5 FINAL RECOMMENDATIONS

10.5.1 It is RECOMMENDED that the following community governance and electoral arrangements be approved;-

- a) A new parish of Great Oldbury will be created and the parish should be called Great Oldbury Parish Council as shown on Map 1;
 - b) The effective date for the new parish council will be the 1 April 2024, with elections for the parish council to take place in May 2024;
 - c) Great Oldbury Parish Council should return SEVEN parish councillors;
 - d) The parish should not be divided into wards;
 - e) Changes are made to boundaries of the existing parishes of Eastington, Standish and Stonehouse as shown on Map 2;
 - f) No changes are made to the councillor allocations for Standish Parish Council and Stonehouse Town Council; and
 - g) The number of Parish Councillors for Eastington is decreased to NINE.
 - h) A request to the LGBCE is made to amend the boundaries of Severn and Stonehouse District Wards to be coterminous with the new parish boundaries on the understanding that a District Ward review may need to take place as a result of the electoral variance in Severn Ward.
-

11. STONEHOUSE TOWN COUNCIL CREATION OF AND AMENDMENT TO WARD BOUNDARIES



11.1 First stage consultation

11.1.1 Stonehouse Town Council made a submission requesting a change to the warding arrangements which they believed to not be suitable and the current warding arrangements should be removed. Two further submissions were received which requested a number of changes including transferring a number of areas to Stonehouse Town Council and reversing a change which was made during the last CGR held in 2019 to the boundary between Cainscross.

11.2 Draft recommendations

11.2.1 The Working Group considered the proposals made in the 2 submissions to the initial consultation, however, did not feel that enough evidence had been provided to justify recommending and changes to the boundaries for Stonehouse.

11.2.2 The Working Group considered in depth the warding arrangements for Stonehouse and felt that removing the warding arrangements entirely would not lead to more effective and convenient community governance. The Working Group instead proposed the creation of three wards similar to the arrangements that were in place prior to 2016 which would help to ensure equal representation across the town council.

11.2.3 The working group recommended that the number of Councillors for each ward was proportionately based on the number of electors within each ward:

- Stonehouse North Ward – 6 Councillors
- Stonehouse South Ward – 4 Councillors
- Stonehouse Central Ward – 4 Councillors

11.3 Second stage consultation

11.3.1 Stonehouse Town Council responded to confirm that they support the draft recommendations for the warding arrangements and the councillor allocation.

11.4 Final recommendations

11.4.1 The Working Group agreed that the proposed change to warding arrangements and councillor allocations would help to ensure equal representation and were necessary for effective and convenient local governance in the area.

11.5 FINAL RECOMMENDATIONS

11.5.1 It is RECOMMENDED that the following community governance and electoral arrangements be approved;-

- a) The warding arrangements of the Town of Stonehouse are redrawn to create three wards, North, Central and South Wards as shown on Map 3;
- b) The allocation of Councillors is redistributed across the wards with an allocation of SIX Councillors for North Ward, FOUR Councillors for South Ward and FOUR Councillors for Central Ward.

12. STANDISH PARISH COUNCIL FUTURE COMMUNITY GOVERNANCE REVIEW

12.1 First stage consultation

12.1.1 Standish Parish Council made a submission during the first stage of consultation but did not make any suggestions or recommendations for change. They identified that further development within the Parish may happen and a further CGR would be required to look at the governance arrangements if necessary.

12.2 Draft recommendations

12.2.1 The Working Group considered the Local Plan site PS19a, as outlined in Map 4, at great length but believed that it was important that future residents of the site of any new development should be consulted with before making any recommendations for change. It was therefore recommended that there was no change to the current arrangements at this time.

12.3 Second stage consultation

12.3.1 Standish Parish Council supported the draft recommendations.

12.4 Final recommendations

12.4.1 The Working Group agreed that no changes to governance arrangements were required at the current time however they reaffirmed the recommendation that should the site at PS19a be developed a further CGR would be required.

12.5 FINAL RECOMMENDATIONS

12.5.1 It is RECOMMENDED that the following community governance and electoral arrangements be approved;-

- a) A Community Governance Review for Standish Parish is considered in the future the development at site PS19a becomes established.

13. AREAS WHERE NO CHANGES HAVE BEEN RECOMMENDED

- 13.1 The Working Group considered the consultation responses received for Dursley Town Council, Nailsworth Town Council and Horsley Parish Council and agreed that there was a lack of evidence to support any changes.
- 13.2 Dursley Town Council had requested that the current arrangements were reviewed to ensure that they were still adequate, further submissions were received which were supportive of the current arrangements.
- 13.3 Nailsworth Town Council withdrew their initial request for a review of their boundaries with neighbouring parish and town councils, no further submissions were received that requested any changes to the current arrangements.
- 13.4 Horsley Parish Council were initially included in the review due to Nailsworth Town Councils request to review its boundaries, no requests were received for any alterations to its current governance arrangements.
- 13.5 Furthermore, a submission was received from Woodchester Parish Council during the second stage of consultation which requested a reduction in the number of Councillors from seven to six. The Parish Council advised that the existing councillors felt that the parish council performed better as a functioning body of six members. Further information was requested from Woodchester Parish Council to ensure the Working Group were able to make an informed final recommendation.
- 13.6 Although a reduction in the number of seats would be within the guidelines of Aston Business School, the Parish Council would be reducing the number of seats to a size typically held by a much smaller Parish Council with a considerably smaller electorate.
- 13.7 After consideration of the response provided and the guidelines used, the Working Group agreed that there was a lack of evidence to support a reduction in the number of Councillor seats on the Parish Council as it was an active Parish Council and historically had no issue filling vacant seats indicating a level of democratic engagement within the parish.

14. CONCLUSION AND NEXT STEPS

- 14.1 If Council chooses to accept the final recommendations of the Review, it will be necessary for the One Legal team in conjunction with the Corporate Policy and Governance Manager to prepare a Reorganisation Order and publish this together with the reasons for the changes, making maps available for public inspection. There are also various bodies that must be notified of the changes including:
- The Secretary of State for Levelling Up, Housing and Communities
 - The Local Government Boundary Commission for England (LGBCE)
 - The Office for National Statistics
 - The Director General of Ordnance Survey
 - Any other principal council whose area the order relates to (in this case, Gloucestershire County Council)
 - The Audit Commission.
- 14.2 All residents whose property has been affected by a parish boundary change will be notified in writing.

- 14.3 If the consequential alterations are agreed by the LGBCE, the new parish boundaries will take effect on 1 April 2024, ahead of the next scheduled parish elections in May 2024 and will apply to the electoral register published on the 1 December 2023.

15. IMPLICATIONS

15.1 Financial Implications

There are no financial implications arising directly from this report. The creation of a new Parish does create obligations for the Council to support the new organisation but this is expected to be achieved through existing officer time.

Andrew Cummings, Strategic Director of Resources
Email: andrew.cummings@stroud.gov.uk

15.2 Legal Implications

The Local Government and Public Involvement in Health Act 2007 devolves the power to take decisions about the creation of parishes and their electoral arrangements to local government and local communities.

Principal Councils (which includes District Councils) have a responsibility to undertake Community Governance Reviews and can decide whether to give effect to recommendations made in those reviews save that any consequential recommendations for related alterations to the electoral areas require approval of, and implementation by, the LGBCE.

In accordance with the provisions of the 2007 Act, the Council has had regard to the Guidance on community governance reviews issued by the Secretary of State and the LGBCE when preparing the Recommendations in this report.

In relation to consequential changes to district ward boundaries, the Commission will want to see that specific consultation has been undertaken on ward boundaries as well as the Parish boundaries themselves. The Commission can only accept or reject all the requested related alterations. Accordingly, if there are changes to ward boundaries which are likely to have a significant impact on the electoral equality of the affected district wards, the Commission may not support these.

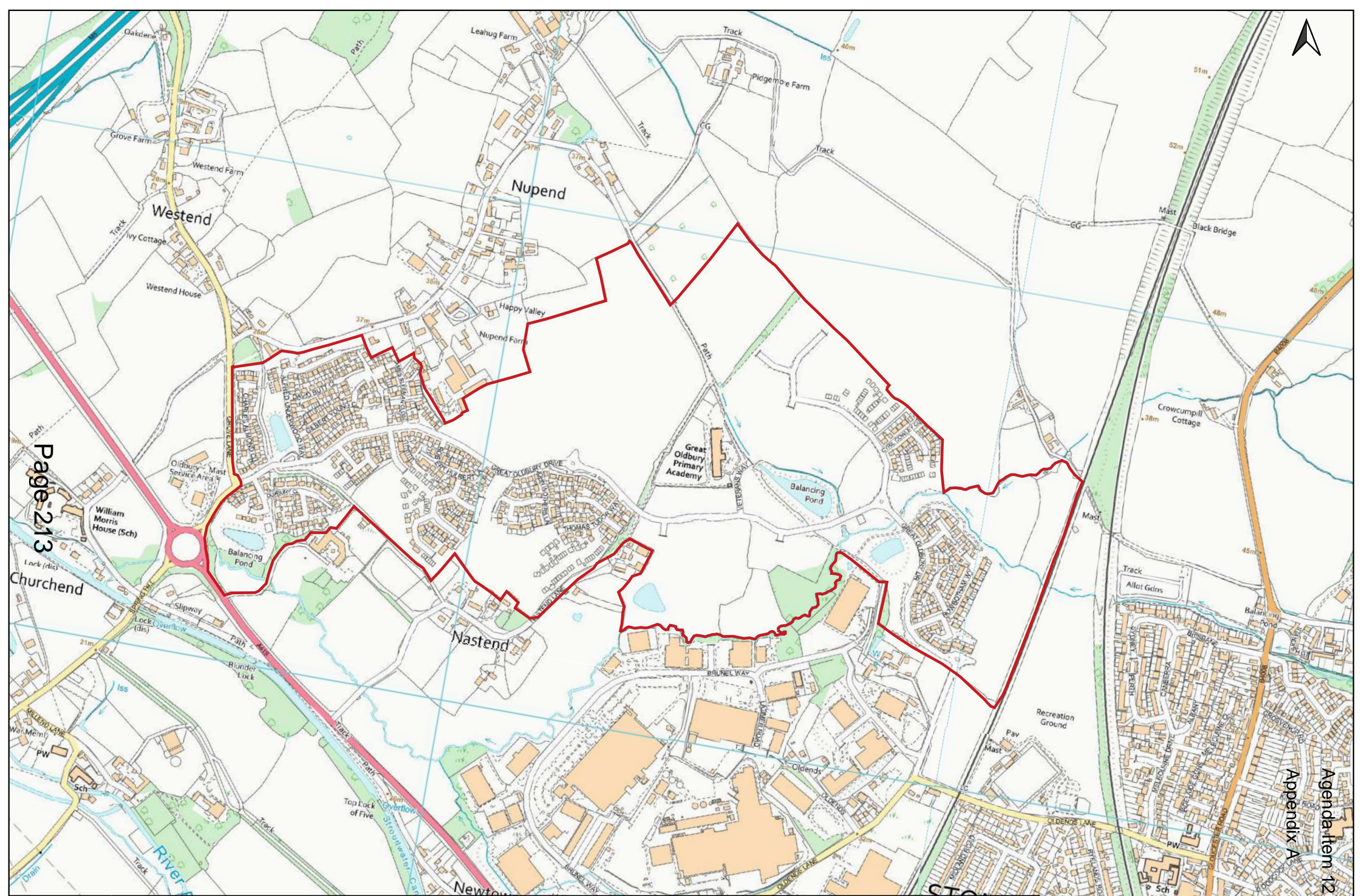
One Legal
Email: legalservices@onelegal.org.uk

15.3 Equality Implications

An EIA has been carried out by Officers in relation to the decision made in this report and can be found at Appendix D, due regard will be given to any implications identified in it.

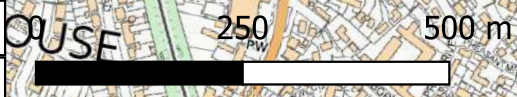
15.4 Environmental Implications

There are no significant implications within this category.

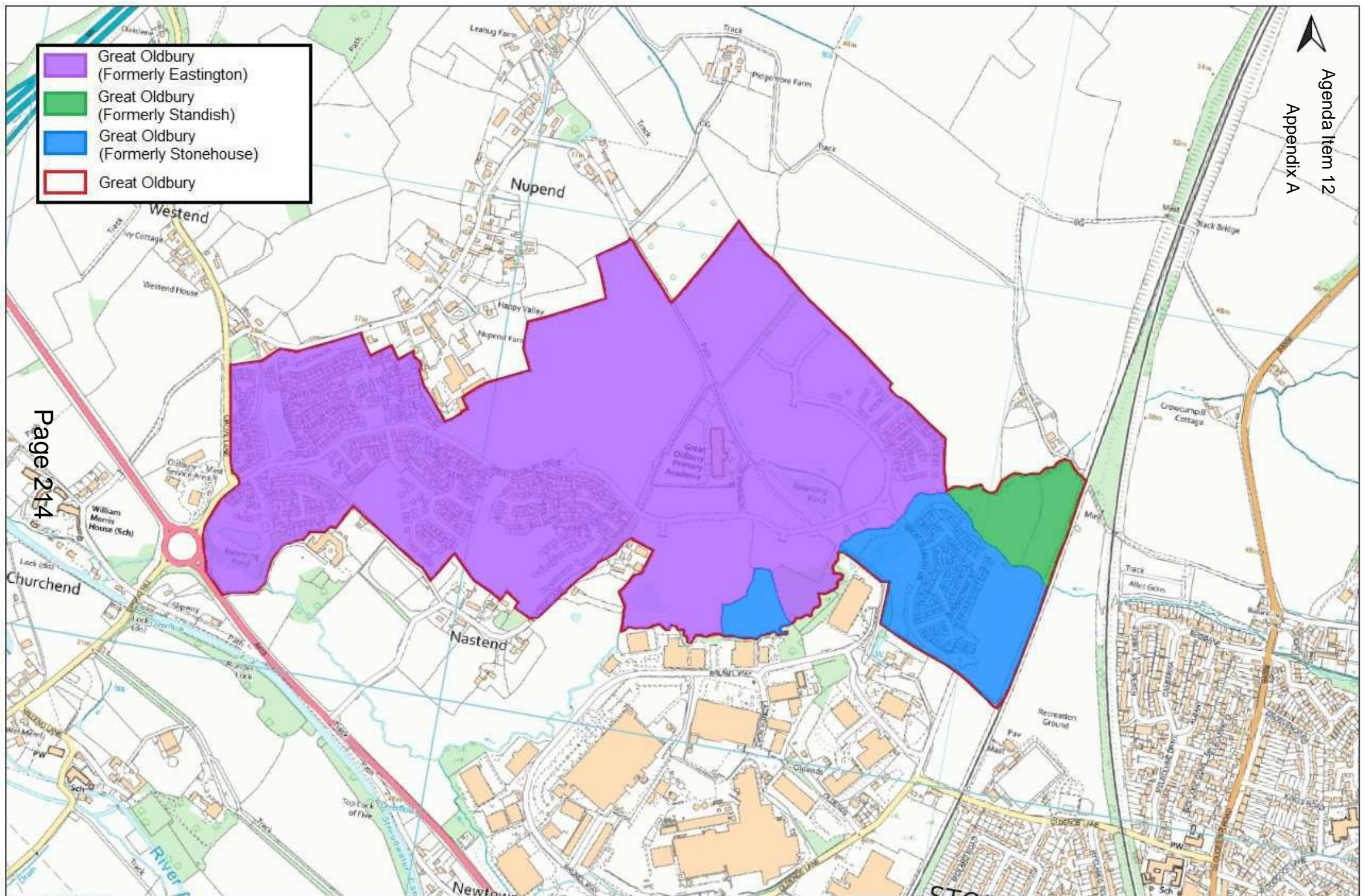


Map 1 - Great Oldbury Parish - CGR Final Recommendations

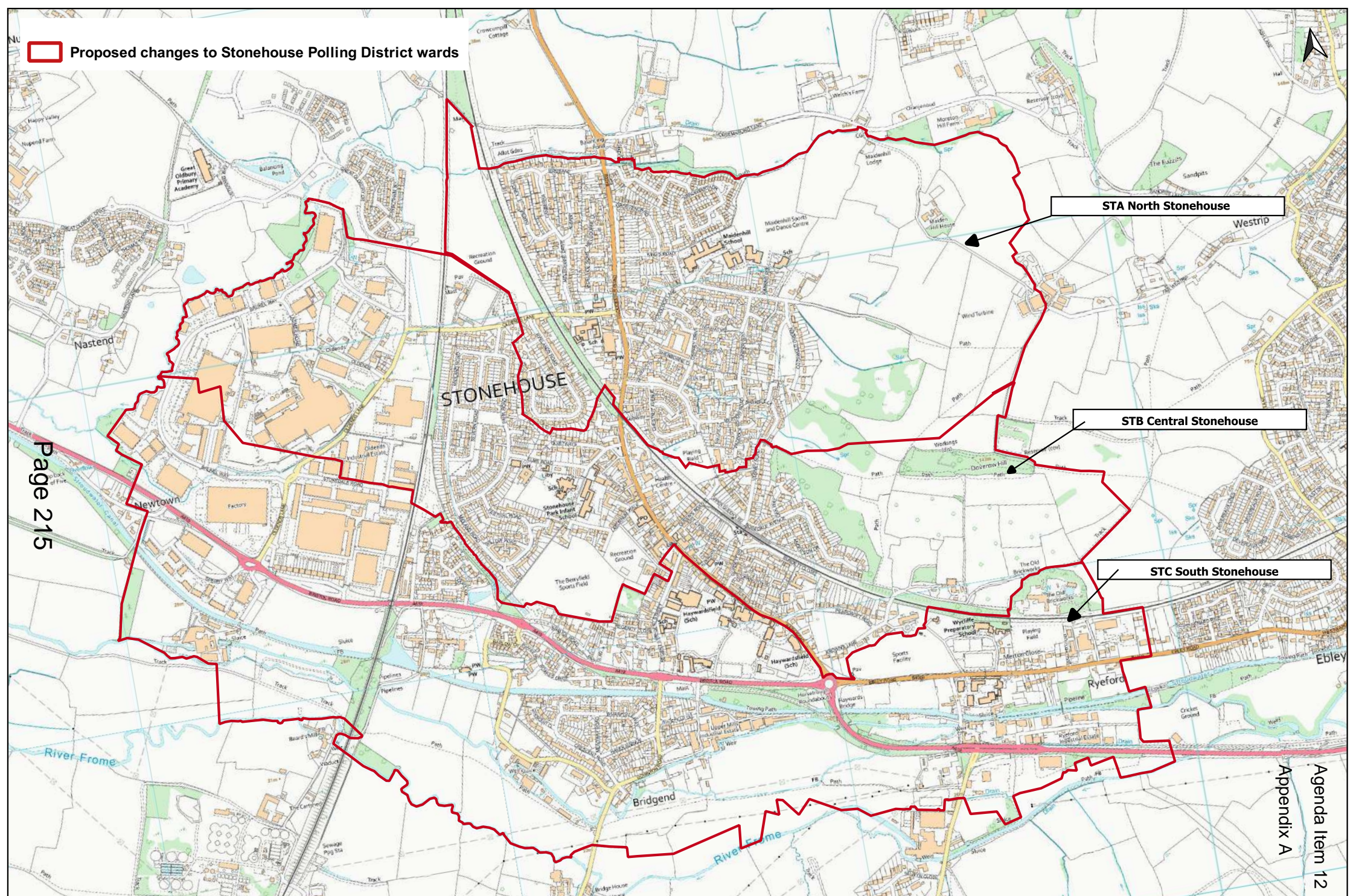
05/07/2023 © Crown copyright and database rights 2023 Ordnance Survey 100019682



- Great Oldbury (Formerly Eastington)
- Great Oldbury (Formerly Standish)
- Great Oldbury (Formerly Stonehouse)
- Great Oldbury

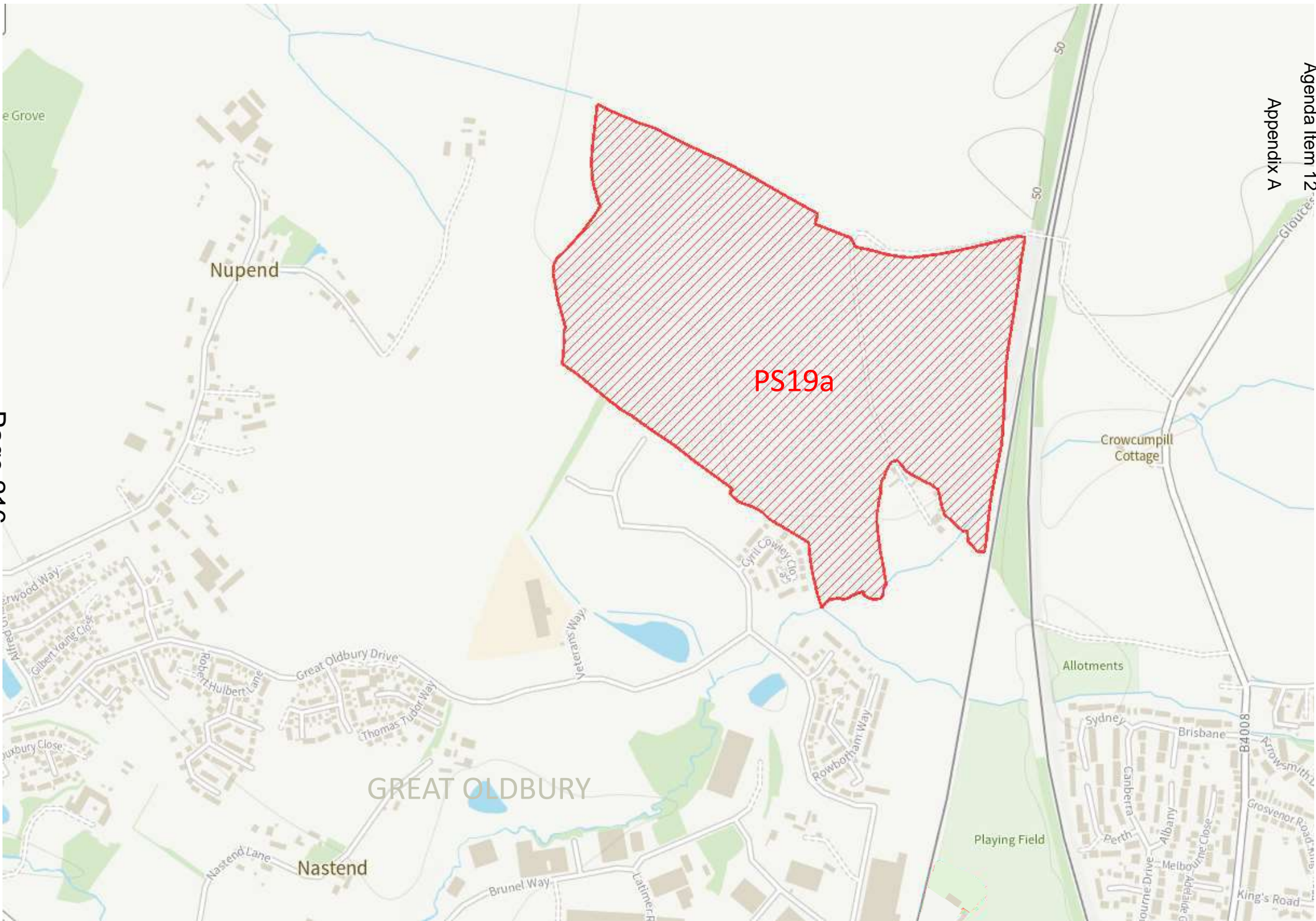


Proposed changes to Stonehouse Polling District wards



Page 215

Appendix A
Agenda Item 12



Map 4 - Site PS19a - CGR Final Recommendations

COMMUNITY GOVERNANCE REVIEW INITIAL CONSULTATION RESPONSES

HORSLEY PARISH COUNCIL

Reference	Parish/Town Council	Connection to the Parish/Town Council	<p>Will the Parish/Town Benefit from any of the below options:</p> <ol style="list-style-type: none"> 1. Increasing or decreasing the number of Parish/Town councillors 2. Merging or splitting your Parish/Town Council 3. Creating or changing your existing Parish Ward Boundaries 4. Changing the name of your Parish/Town Council 5. Grouping or de-grouping together with a neighbouring Parish/Town Council 6. Abolishing your parish so that it becomes an un-parished area 	Justification	Supporting Evidence	Further Comments
CGR1/H/1	Horsley	Resident	None of the above.	<p>Horsley Parish Council has for many years been outstanding in fulfilling its obligations as well as promoting and assisting many projects and incentives within the parish; the church, the pub, the village hall, the play area, the community shop, the primary school, the football team have all benefitted from support and encouragement from the parish council. The parish encompasses a number of diverse rural hamlets spread amongst valleys, agricultural land and woodlands dissected by a major and minor road system and consequently requires a sensitive approach to maintain the inherent quality of life; this is evidenced by the parish council's successful approach to housing development balancing the need for affordable and market priced housing without overburdening the existing population, infrastructure, and services.</p>	No, I do not have any supporting documents.	None.

CGR1/H/2	Horsley	Resident	None of the above.	I move to the Stroud area and specifically Horsley because of the green and leftward leaning politics of the area. Stroud district council reflects this diversity whereas Cotswold district is frankly alien to the political leanings of Nailsworth and its surroundings as well as being very distant. I believe a change of administration to Cotswold would be a disaster for this area and a Terrible fit.	No, I do not have any supporting documents.	None.
CGR1/H/3	Horsley	Resident	None of the above.	Happy with status quo.	No, I do not have any supporting documents.	None.
CGR1/H/4	Horsley	Parish Clerk	None of the above.	Horsley Parish Council discussed this review at its meeting on 22 November 2022. The Community Governance Review meeting at SDC was attended by the Clerk and Cllr S Howells. It had included a boundary change in Nailsworth and Horsley. It had included a boundary change in Nailsworth and Horsley. The parish council understands that the boundary change has now been withdrawn by Nailsworth Town Council as it was included by the Town Council several years ago and a proper consultation had not been carried out. As the Community Governance Review has already started, the parish council would like to state that Horsley Parish Council is happy with the existing boundary and do not want any changes to it.	None.	None.

Appendix B

DURSLEY TOWN COUNCIL

Reference	Parish/Town Council	Connection to the Parish/Town Council	<p style="text-align: center;">Will the Parish/Town Benefit from any of the below options:</p> <ol style="list-style-type: none"> 1. Increasing or decreasing the number of Parish/Town councillors 2. Merging of splitting your Parish/Town Council 3. Creating or changing your existing Parish Ward Boundaries 4. Changing the name of your Parish/Town Council 5. Grouping or de-grouping together with a neighbouring Parish/Town Council 6. Abolishing your parish so that it becomes an un-parished area 	Justification	Supporting Evidence	Further Comments
CGR1/D/1	Dursley	Resident	None of the above.	<p>We would be vehemently opposed to any notion of Dursley merging with Cam.</p> <p>Dursley is a distinctive and historic Cotswold Market town and should make the most of its special identity as such.</p> <p>Cam is very different, comprising villages and hamlets that have, and continue to, merge together into a large and sprawling conurbation. Unfortunately losing much of its charm in the process.</p> <p>Dursley's current parish boundary is fine and makes sense.</p> <p>A reduction in number of councillors would not be a good idea, as it would increase the individual workloads and would put people off getting involved (which can already be a challenge to find those with enough spare time and skills).</p>	No, I do not have any supporting documents.	None.
CGR1/D/2	Dursley	Community Group Cam and Dursley Transportation	None of the above.	It seems fine as it is.	No, I do not have any supporting documents.	None.
CGR1/D/3	Dursley	Town Clerk	None of the above.	<p>Dursley Town Council do not plan to respond to the consultation. We merely asked the question should we have an additional Councillor due to the number of new homes built in recent years.</p> <p>We will accept the decision either way which I assume is based on the electorate.</p>	None.	None.

CGR1/D/4	Dursley	Resident	None of the above.	<p>1. Cam should become a town. It's bigger than Dursley, by population and probably area too, and is seems silly for it to stay as a village.</p> <p>2. A lot of the new houses in Cam / Cambridge should become a new parish. Cam is big enough already.</p> <p>N.B. I lived in Cam for 30 years before moving back to Dursley.</p>	No, I do not have any supporting documents.	None. Appendix B
CGR1/D/5	Dursley	Resident	None of the above.		No, I do not have any supporting documents.	None.

CAM PARISH COUNCIL

Reference	Parish/Town Council	Connection to the Parish/Town Council	<p align="center">Will the Parish/Town Benefit from any of the below options:</p> <ol style="list-style-type: none"> 1. Increasing or decreasing the number of Parish/Town councillors 2. Merging of splitting your Parish/Town Council 3. Creating or changing your existing Parish Ward Boundaries 4. Changing the name of your Parish/Town Council 5. Grouping or de-grouping together with a neighbouring Parish/Town Council 6. Abolishing your parish so that it becomes an un-parished area 	Justification	Supporting Evidence	Further Comments
CGR1/C/1	Cam	Resident	<ol style="list-style-type: none"> 1. Increasing or decreasing the number of Parish/Town Councillors 2. Merging or splitting your Parish/Town Council 	<p>With the increased development and with more planned it may/will become necessary for best practise governance to split the Parish and engage more parish councillors. As the village expands there may/will be areas in which population numbers increase more quickly than in others. For best practise governance these changes need to be recognised and acted upon as and when necessary to ensure that the best effect for the local area is achieved. The bigger the population the more this will become necessary so that reasonable contact can be maintained.</p>	No, I do not have any supporting documents.	None.
CGR1/C/2	Cam	Parish Council	<ol style="list-style-type: none"> 1. Increasing or decreasing the number of Parish/Town Councillors 3. Creating or changing your existing Parish ward boundaries 	<p>Due to the amount of growth within the Parish, the numbers of Councillors of Cam should be increased. The Parish Council believe that the best way to ensure representation across the new development, will be to encompass the majority of the new build within a dedicated parish ward. We propose an additional 2 members within this ward. This will have capacity to grow over the years as the proposed development nears completion. We would also request a slight ward boundary change to accommodate the new ward. Details of which have been emailed to elections and attached for information.</p>	Attachment 1	There is a Box Road facebook page that you can look at to show that they are growing as a community.
CGR1/C/3	Cam	Resident	None of the above.	If it's not broken then you don't need to fix it.	No, I do not have any supporting documents.	None.

MINCHINHAMPTON PARISH COUNCIL

Reference	Parish/Town Council	Connection to the Parish/Town Council	<p style="text-align: center;">Will the Parish/Town Benefit from any of the below options:</p> <ol style="list-style-type: none"> 1. Increasing or decreasing the number of Parish/Town councillors 2. Merging or splitting your Parish/Town Council 3. Creating or changing your existing Parish Ward Boundaries 4. Changing the name of your Parish/Town Council 5. Grouping or de-grouping together with a neighbouring Parish/Town Council 6. Abolishing your parish so that it becomes an un-parished area 	Justification	Supporting Evidence	Further Comments Appendix B
CGR1/M/1	Minchinhampton	Resident	None of the above.	<p>The only reason to change the boundary would be to allow more development of houses. The centre of Minchinhampton cannot cope with any more people.</p> <p>It's actually sits within the tick boxes as the odd one out with little relevance to any of the other statements. If you do decide to change a boundary who sets it ? And is it's full purpose disclosed? Who benefits financially from that decision and what influence do the actually have on making these decisions?</p>	No, I do not have any supporting documents.	Absolute joke of a survey at a time of great hardship for many. Have the council nothing better to spend money on?
CGR1/M/2	Minchinhampton	Resident	<ol style="list-style-type: none"> 1. Increasing or decreasing the number of Parish/Town Councillors 2. Merging or splitting your Parish/Town Council 3. Creating or changing your existing Parish ward boundaries 	<p>The Minchinhampton Parish is extremely large, especially when compared to it's neighbouring parishes such as Nailsworth. I am aware that some geographical areas need to be this big to make up the number of inhabitants, however, it does seem excessive. From what I've seen, a sensible move may be to split off some of the wards such as Brimscombe or Amberley into likely their own Parish/ parishes, especially with the development at Brimscombe Port. In addition, it seems odd that whilst the Nailsworth Parish has 11 councillors, Minchinhampton still only has 15. I do not know the current population of either parish, as I cannot find this information anywhere, but the discrepancy in size does not appear to align with the amount of councillors.</p>	No, I do not have any supporting documents.	Ideally, it would have been nice to know why this has been brought up as a thing that is happening. It may just be that I have missed this, however there doesn't appear to be any reasoning available on the webpages.

CGR1/M/3	Minchinhampton	Resident	None of the above.		No, I do not have any supporting documents.	None.
CGR1/M/4	Minchinhampton	Neighbouring Parish/Town Council	3. Creating or changing your existing Parish ward boundaries	<p>This survey is being completing on behalf of Brimscombe and Thrupp Parish Council. This response was approved at full Council meeting – 10th January 2022, minute reference: 8.1:</p> <p>Brimscombe and Thrupp Parish Council would like to see a revision of the Minchinhampton/ Brimscombe and Thrupp parish boundaries, resulting in Brimscombe residents being included in Brimscombe and Thrupp Parish rather than Minchinhampton Parish. This relates specifically to the following areas:</p> <p>Victoria and Albert Road Estates Orchard Lane Brimscombe CoE Primary School Wimberley Mills Dark Mills</p> <p>These are neighbourhoods and new developments that identify with and rely on the services of Brimscombe and Thrupp parish, including schools, shops, transport, and significantly the port development.</p> <p>We require that Brimscombe and Thrupp be considered in the current boundary review - especially as the boundary being considered is a shared boundary between Brimscombe and Thrupp Parish and Minchinhampton Parish.</p> <p>The Parish Council would like clarification of how the residents in affected areas have been notified and consulted.</p>	No, I do not have any supporting documents.	None.
CGR1/M/5	Minchinhampton	Parish/Town Council	3. Creating or changing your existing Parish ward boundaries	<p>There is an area of Brimscombe currently in Minchinhampton Parish which is physically part of Brimscombe. It is adjacent to the current Port development and looks to Brimscombe and Thrupp for its services. Also traffic generated in these areas has its major impact on the A419 and</p>	These can be provided in a short timetable if required.	A proper consultation needed to enable the residents of this area to

				<p>Brimscombe and Thrupp Parish. This is the area around Brimscombe Hill, Victoria Rd and also Wimberley Mill. It is an anomaly that Brimscombe School and Church, used by people in Brimscombe and Thrupp is not actually in Brimscombe and Thrupp Parish.</p>		<p>express their view and to decide where the most appropriate boundary would be. The residents were not given an opportunity to comment on this current consultation because they were never made aware. Hopefully this area can be included in the next stage of this process so that this injustice can be rectified.</p>
CGR1/M/6	Minchinhampton	Resident	3. Creating or changing your existing Parish ward boundaries	<p>I would very much like to be part of the Brimscombe & Thrupp Parish. My address is Brimscombe. Our neighbourhood is much nearer to Brimscombe than to Minchinhampton and most people I know who live here feel very much part of Brimscombe. We don't feel well represented by the councillors in Minchinhampton. A recent example is that during the recent spell of very cold weather they would not provide any refills for gritting these steep and narrow – and often dangerous – roads.</p>	No, I do not have any supporting documents.	None.
CGR1/M/7	Minchinhampton	Resident	3. Creating or changing your existing Parish ward boundaries	<p>We live in Brimscombe and are currently under the Minchinhampton Parish Council. It would be nice to be part of the same Parish Council as the rest of our community. It would also be nice for council tax that we pay go toward our local area. Our main concern at this moment is Minchinhampton Parish Council refusing to refill grit bins, meaning that residents are at risk of</p>	No, I do not have any supporting documents.	None.

				being stranded during icy periods. It's also impacting bin collections as bin lorries will not enter the road at risk of getting stuck!		
CGR1/M/8	Minchinhampton	Resident	3. Creating or changing your existing Parish ward boundaries	I live in Victoria Rd, Brimscombe. I don't understand why we come under Minchinhampton, rather than Brimscombe and Thrupp. Brimscombe is a community, albeit divided by London Rd. I have no connection with Minchinhampton, and don't feel that Minchinhampton councillors have any knowledge or interest in Brimscombe. There are many local issues, particularly with the port redevelopment.	No, I do not have any supporting documents.	None.
CGR1/M/9	Minchinhampton	Resident	3. Creating or changing your existing Parish ward boundaries	It doesn't make sense to be in a Minch parish when we live in Brimscombe only a slight way up Brimscombe hill and have no connectuon to Brimscombe & Thrupp parish! We have wanted grit for our bins here for a few years and it seems impossible to get Minch parish to deliver to us, they are never filled...so in the snow we suffer, we don't live near the village, we live in our village and i feel we are forgotten about due to not being on the common or in the village up there! Never see what our parish is doing for the neighbourhood down Brimscombe hill, can't find councillor/parish people to get in touch with about our problems?	No, I do not have any supporting documents.	I hate the boundary line that puts us in the Cotswolds district! We are in Brimscombe, lower Brimscombe is in the Stroud district, why is half our village divided by boundaries in the middle of us?
CGR1/M/10	Minchinhampton	Resident	3. Creating or changing your existing Parish ward boundaries	I live in Brimscombe in the very border of the Munch Parrish area. I feel my property/ street (street) should be within Brimscombe and Thrupp parish and not Minch. I am in all other ways, a member of and connected to, B & T parish. I do not feel connected to Minch or represented by Minch parish councillors, in any way.	No, I do not have any supporting documents.	None.
CGR1/M/11	Minchinhampton	Resident	3. Creating or changing your existing Parish ward boundaries	Victoria Rd should be part of Brimscombe & Thrupp Parish rather than Minchinhampton. It's too far down the hill from Minchinhampton and we don't feel represented or connected to the town. We feel much more a part of Brimscombe and Stroud.	No, I do not have any supporting documents.	None.

CGR1/M/12	Minchinhampton	Resident	3. Creating or changing your existing Parish ward boundaries	I believe our road should sit in the parish of brimscombe and thrupp	No, I do not have any supporting documents.	None.
CGR1/M/13	Minchinhampton	Parish/Town Clerk	None of the above.	The set up is fine as it is; it is the politics that gets in the way.	No, I do not have any supporting documents.	Not as an employee of those same politicians mentioned above.

Appendix B

NAILSWORTH TOWN COUNCIL

Reference	Parish/Town Council	Connection to the Parish/Town Council	<p align="center">Will the Parish/Town Benefit from any of the below options:</p> <ol style="list-style-type: none"> 1. Increasing or decreasing the number of Parish/Town councillors 2. Merging of splitting your Parish/Town Council 3. Creating or changing your existing Parish Ward Boundaries 4. Changing the name of your Parish/Town Council 5. Grouping or de-grouping together with a neighbouring Parish/Town Council 6. Abolishing your parish so that it becomes an un-parished area 	Justification	Supporting Evidence	Further Comments
CGR1/N/1	Nailsworth	Resident	None of the above.		No, I do not have any supporting documents.	None.
CGR1/N/2	Nailsworth	Town Clerk	None of the above.	Following a meeting of my council on Tuesday 1st November, Nailsworth Town Council wish to withdraw their request to be included in the review and for changes in the parish boundary to be considered.	None.	None.

NAILSWORTH & MINCHINHAMPTON

Reference	Parish/Town Council	Connection to the Parish/Town Council	Will the Parish/Town Benefit from any of the below options: 1. Increasing or decreasing the number of Parish/Town councillors 2. Merging of splitting your Parish/Town Council 3. Creating or changing your existing Parish Ward Boundaries 4. Changing the name of your Parish/Town Council 5. Grouping or de-grouping together with a neighbouring Parish/Town Council 6. Abolishing your parish so that it becomes an un-parished area	Justification	Supporting Evidence	Further Comment
CGR1/N&M/1	Nailsworth & Minchinhampton	Former Stroud Inhabitant	None of the above.		No, I do not have any supporting documents.	None.

Appendix B

Agenda Item 12

EASTINGTON PARISH COUNCIL

Reference	Parish/Town Council	Connection to the Parish/Town Council	<p align="center">Will the Parish/Town Benefit from any of the below options:</p> <ol style="list-style-type: none"> 1. Increasing or decreasing the number of Parish/Town councillors 2. Merging of splitting your Parish/Town Council 3. Creating or changing your existing Parish Ward Boundaries 4. Changing the name of your Parish/Town Council 5. Grouping or de-grouping together with a neighbouring Parish/Town Council 6. Abolishing your parish so that it becomes an un-parished area 	Justification	Supporting Evidence	Further Comments
CGR1/E/1	Eastington	Parish Clerk	<ol style="list-style-type: none"> 2. Merging of splitting your Parish/Town Council 3. Creating or changing your existing Parish Ward Boundaries 	<p>Currently, the Great Oldbury housing development, which on completion will consist of 1350 houses, is part of Eastington parish. This Community Governance Review is considering whether Great Oldbury should continue to be in Eastington Parish, as the number of houses now built and occupied is more than the original number in Eastington village and its hamlets.</p> <p>The parish council has considered a number of options and they need to be pursued further with a full and extensive consultation with all residents.</p> <p>The parish council has uploaded a document below, detailing Eastington Parish Council's response to this CGR review.</p> <p>At this stage we could provide an indicative boundary map if that would help, or we can produce a more accurate one at the next stage of the consultation. Our main requirement is that the historical hamlets of Westend, Nupend and Nastend stay within Eastington Parish.</p>	Attachment 2	<p>The parish council needs to engage more fully with all residents within the historical areas of Eastington parish and all residents living in the new Great Oldbury development.</p> <p>Eastington Parish Council feels strongly that if Great Oldbury were to become its own parish and have its own parish council, the historic hamlets of Westend, Nupend and Nastend, which although close to Great</p>

						Oldbury, remain part of Eastington Parish as they have their own identity.
CGR1/E/2	Eastington	Great Oldbury Community Group	<ul style="list-style-type: none"> 2. Merging of splitting your Parish/Town Council 3. Creating or changing your existing Parish Ward Boundaries 5. Grouping or de-grouping together with a neighbouring Parish/Town Council 	<p>I am writing to represent the general opinion of the members of the Great Oldbury Community Group who have attended meetings over the past few months where this issue has been discussed. As a new community we are all too aware of where we sit within the locality and the stark differences between the rural towns, villages and hamlets that surround us and the associated contrast in needs and wants. Based on the information we have received and discussed, our consensus is that the Great Oldbury estate would benefit from coming under one umbrella as its own parish.</p> <p>We have been proactive as a community in ensuring that we have put in place initial processes to have a 'voice' and feel that this is constantly hampered by the fact that various parts of the estate fall under different parishes, currently 2 but this will increase when the estate expands into the current Standish Parish boundary too. We feel that by having our own identity it will bring the community together more and reduce the opportunity for a perceived divide between the various areas within the estate. Having opportunities to make decisions specific to the estate will enable us to move forward as a community with a clearly forged identity and community sense of place.</p> <p>As well as establishing good links with Eastington PC we have also sought input from Stonehouse Town Council and disseminate information through email chains and also on the Community Facebook page to ensure as much of the population as possible is reached and has the opportunity to have input. In</p>	No, I do not have any supporting documents.	None.

				<p>addition to this we have established strong links with Robert Hitchins and now have a positive rapport and working relationship with them which has already reaped benefits for the community as a whole. For example we expect to coordinate community issues such as communal green areas with management companies and engagement with GCC and developers as part of the handover to resident management groups.</p> <p>As a community group we have already had positive impact on issues linked to antisocial behaviour, speeding, developer engagement and maintenance of communal areas in the estate. With further work we feel that having a Great Oldbury specific parish we will only be able to amplify these already positive steps.</p> <p>Through developing links with the County/District Councillor for our area we have begun discussions with representatives from other areas where a new Parish has been established (e.g. Hunts Grove) and believe that this input will be invaluable in ensuring any mistakes made in other areas are avoided.</p> <p>We are pleased to see that our thoughts are echoed and supported by both Eastington PC and the Keep Eastington Rural Community group, we have had direct input to the EPC meetings on this matter and know that they will also provide necessary support moving forward. As a community we have Eastington Parish Councillors already living in GO and expect that they will transfer across and provide an established knowledge base to further develop moving forward.</p>		
--	--	--	--	--	--	--

STANDISH PARISH COUNCIL

Reference	Parish/Town Council	Connection to the Parish/Town Council	<p style="text-align: center;">Will the Parish/Town Benefit from any of the below options:</p> <ol style="list-style-type: none"> 1. Increasing or decreasing the number of Parish/Town councillors 2. Merging of splitting your Parish/Town Council 3. Creating or changing your existing Parish Ward Boundaries 4. Changing the name of your Parish/Town Council 5. Grouping or de-grouping together with a neighbouring Parish/Town Council 6. Abolishing your parish so that it becomes an un-parished area 	Justification	Supporting Evidence	Further Comments
CGR1/SD/1	Standish	Parish Council	None of the above.	<p>I am responding on behalf of Standish Parish Council.</p> <p>The number of parish councillors was increased from 5 to 6 in May 2022 and we have not yet fully explored the benefits of an extra councillor, so are are content to remain at this number for the time being. If and when PS19a comes to fruition, with another 700 households in Standish, we assume that another CGR will take place.</p> <p>At the last CGR, a small piece of land was ceded to Stonehouse TC. Standish Parish Council sees no further reason to review the longstanding boundaries of the parish and is not aware of any dissatisfaction with the current boundaries amongst parish residents.</p>	No, I do not have any supporting documents.	Depending on representations from neighbouring parishes, Standish Parish Council may wish to submit further observations at Stage 2.

STONEHOUSE TOWN COUNCIL

Reference	Parish/Town Council	Connection to the Parish/Town Council	<p style="text-align: center;">Will the Parish/Town Benefit from any of the below options:</p> <ol style="list-style-type: none"> 1. Increasing or decreasing the number of Parish/Town councillors 2. Merging of splitting your Parish/Town Council 3. Creating or changing your existing Parish Ward Boundaries 4. Changing the name of your Parish/Town Council 5. Grouping or de-grouping together with a neighbouring Parish/Town Council 6. Abolishing your parish so that it becomes an un-parished area 	Justification	Supporting Evidence	Further Comments
CGR1/SH/1	Stonehouse	Town Clerk	3. Creating or changing your existing Parish Ward Boundaries	Those present discussed the Review and accepted that the Great Oldbury development wish to create their own parish was reasonable. It was regarded by those present that the current systems of wards for Stonehouse was not suitable and would prefer there to be only one ward covering the whole of the Town.	No, I do not have any supporting documents.	None.
CGR1/SH/2	Stonehouse	Resident	3. Creating or changing your existing Parish Ward Boundaries	<p>I wish to comment on boundaries and town councils.</p> <p>We live on Ebley Road, which in the last few years changed from being under Stonehouse Town Council to Cainscross.</p> <p>When we were regarded as part of Stonehouse, we felt very much part of the community and recieved newsletters 4 times a year. We now seem to be in limbo - never receive info/newsletters from Cainscross and feel cut off.</p> <p>The 'Welcome to Ebley' sign is past the Orchard Road mini roundabout, and Ebley Road has a GL10 Stonehouse post code, so I don't understand why we were changed to Cainscross.</p>		None.

				<p>When you are reviewing the boundaries and parishes, I would welcome the opportunity for you to look again at Ebley Road, which seems to exist in a no-mans land currently. We should either revert to Stonehouse, or Cainscross</p> <p>Town Council should ensure we are not ignored as seems to be the case currently.</p>		
--	--	--	--	--	--	--

EASTINGTON, STANDISH AND STONEHOUSE

Reference	Parish/Town Council	Connection to the Parish/Town Council	<p align="center">Will the Parish/Town Benefit from any of the below options:</p> <ol style="list-style-type: none"> 1. Increasing or decreasing the number of Parish/Town councillors 2. Merging of splitting your Parish/Town Council 3. Creating or changing your existing Parish Ward Boundaries 4. Changing the name of your Parish/Town Council 5. Grouping or de-grouping together with a neighbouring Parish/Town Council 6. Abolishing your parish so that it becomes an un-parished area 	Justification	Supporting Evidence	Further Comments
CGR1/ESS/1	Eastington, Standish and Stonehouse	Resident	3. Creating or changing your existing Parish Ward Boundaries	<p>The Stonehouse Town Council allotments and playing field and new development opposite horsemarling that are currently within Standish Parish would benefit from being transferred to Stonehouse Parish. Further land to the north of Stonehouse that is likely to be developed over the next 20 years should also be considered for transfer to Stonehouse Parish.</p> <p>The Great Oldbury development should be transferred into Stonehouse Parish as I believe the new residents predominantly visit the town for shopping and recreation.</p> <p>I would also consider transferring all of the land between the A419 and the canal (mostly made up of Newtown) from Eastington Parish to Stonehouse Parish.</p> <p>Foxes field at Ebley end of Stonehouse Parish should be transferred into Cainscross Parish.</p>	No, I do not have any supporting documents.	No new Parishes or increase in total number of Parish Town Councillors as a result of this review. We have enough cross already.
CGR1/ESS/2	Eastington, Standish and Stonehouse	Resident	5. Grouping or de-grouping together with a neighbouring Parish/Town Council	Great Oldbury cannot continue to be split between three parish/town councils. I suppose one option would be to set it up as a parish in its own right - like Hunt's Grove. But as a separate entity it might sit uncomfortably alongside Stonehouse. It could be merged with an enlarged Stonehouse Town Council	No, I do not have any supporting documents.	None.

				<p>area - though it is not altogether cohesive geographically. As part of an extended Stonehouse, it would increase the likelihood of joined up planning and amenities, and would hopefully give residents more of a sense of belonging to Stonehouse, and give more momentum to local services.</p>		
CGR1/ESS/3	Eastington, Standish and Stonehouse	Keep Eastington Rural	<ol style="list-style-type: none"> 1. Increasing or decreasing the number of Parish/Town Councillors 2. Merging or Splitting your Parish/Town Council 3. Creating or changing your existing Parish Ward Boundaries 	<p>1. The number of Cllrs can be decreased as a result of response 2 below</p> <p>2. The area of new development known as Great Oldbury should become an independent parish.</p> <p>2.1 Taken with the adjacent Harwood new development which lies within Stonehouse town boundary, the population is almost as much as the 2011 census population of Eastington Parish. The rate of approved building will see that double again in another 5 years and treble by the time of the next proposed Governance Review. The appropriate time to implement change is therefore during this Governance Review.</p> <p>2.2. This proposal affects the boundaries of Stonehouse Town and Standish Parish, since the Local Plan review proposes a further development northwards into Standish to bring the number of houses to at least 1850 by 2040. (see response 3 below)</p> <p>2.3. The residents of Great Oldbury already show a community coherence, particularly on Social Media. They are focused on town matters, such as interacting with their builders, rather than the rural matters that are more generally handled by Eastington PC. Residents of Great Oldbury tend to discuss and approach matters between themselves and do not bring a great deal to Eastington PC. Out of eleven seats for Cllrs, only one is taken by a Great Oldbury resident.</p>	No, I do not have any supporting documents.	<p>This response is made on behalf of Keep Eastington Rural, drawn together in order that you do not have a flurry of similar responses.</p> <p>It is useful to know that this will be the last Governance Review for at least a decade because that removes any lingering doubt that the independence of Great Oldbury should be granted now.</p> <p>It has been encouraging to see the alacrity with which the incoming residents have gelled, particularly in joining forces to challenge</p>

				<p>2.4. The community coherence of Great Oldbury has been reinforced by the building of their school and is about to be further enhanced by the building of their Community Centre and the associated changing rooms for the playing field which were recently graded and seeded.</p> <p>It is entirely inappropriate that Eastington PC should be expected to administer these facilities. It is equally unreasonable to expect Standish PC, an even smaller body than Eastington, to be involved.</p> <p>2.5. Stonehouse Town Council has made no contribution to any of the planning decisions generated by the successive waves of development at Great Oldbury and so I cannot see any reason for them to step in now. Great Oldbury should become it's own Parish, perhaps becoming a Town in due course. The obvious parallels are the independence of Cam and Dursley although they are seamlessly adjacent, as are Hunts Grove and Kingsway.</p> <p>3. The development area of Great Oldbury should be removed from Eastington Parish.</p> <p>3.1. The surrounding rural hamlets of Westend, Nupend and Nastend should remain in Eastington Parish, alongside the other 9 historical hamlets which define the character of Eastington. All three have independent road accesses and have no road links into the Great Oldbury developments, correctly implementing the 2015 Local Plan concept of West Of Stonehouse</p> <p>3.2. Although the Harwood development is technically inside the Stonehouse Town boundary, it is visually integrated with the series of Great Oldbury developments in Eastington Parish. Also, this development is cut off from Stonehouse visually and</p>		<p>suspect decision making by their various developers. They appear poised to run a Parish Council, such that we feel we are enabling them to flee the nest in a sustainable manner.</p> <p>We look forward to your draft plans.</p> <p>Keep Eastington Rural</p>
--	--	--	--	---	--	---

				<p>practically by the railway line, there having been no coherent attempt by Stonehouse TC to sponsor or organise an alternative to the level crossing.</p> <p>3.3. Standish Parish is due to have hundreds of houses built within it's historical boundaries, as Great Oldbury inexorably develops northward. I suggest that this Review consider adopting a new southern boundary line for Standish Parish wherever Allocation PS19A in the Draft Local Plan for 2040 ends. In that way, Standish will avoid the experience of trying to handle all the planning decisions emanating from the build-out of PS19A, which has burdened Eastington PC these last five years.</p>		
--	--	--	--	---	--	--

FRAMPTON ON SEVERN PARISH COUNCIL

Reference	Parish/Town Council	Connection to the Parish/Town Council	<p align="center">Will the Parish/Town Benefit from any of the below options:</p> <ol style="list-style-type: none"> 1. Increasing or decreasing the number of Parish/Town councillors 2. Merging of splitting your Parish/Town Council 3. Creating or changing your existing Parish Ward Boundaries 4. Changing the name of your Parish/Town Council 5. Grouping or de-grouping together with a neighbouring Parish/Town Council 6. Abolishing your parish so that it becomes an un-parished area 	Justification	Supporting Evidence	Further Comments
CGR1/FOS/1	Frampton On Severn	Parish Clerk	<ol style="list-style-type: none"> 1. Increasing or decreasing the number of Parish/Town councillors 	<p>Frampton on Severn completed the Community Governance Review survey in September 2022 to highlight that, if the potential Seven Homes housing development goes ahead along Whitminster Lane there will be an increase in the parish property numbers of 20-25% over the next 3 to 4 years.</p> <p>The parish council considers that it will need an additional councillor in 2024-25 as the electorate of the parish is likely to increase by about 20% with the proposed developments in the next 2 to 3 years.</p> <p>There has been an increase in development in Frampton on Severn during the last year and potentially further sites will be granted. At present, 19 houses are being built on Lake Lane. There could be a further 80 properties at Oatfield, dependent on the Local plan and planning permission being granted. Plus there is the potential for an additional 20 or 30 dwellings in other areas of Frampton on Severn. This level of development would result in a significant increase in the total number of properties and the size of the electorate of Frampton on Severn.</p> <p>Number of electors (January 2023): 1117</p>	Attachment 3	No, but individual councillors may comment separately.

				<p>Electorate could increase by 193 (using a projected forecast of 1.5 electors per property) Increase in electorate: 17%.</p> <p>Number of dwellings (January 2023): 590 Total new dwellings by 2024-25: 129 Increase in dwellings: 22%</p> <p>An additional councillor would be needed, to take the number of councillors up from 9 to 10 councillors, to help with the additional workload of managing additional facilities and services. Frampton on Severn is a very active parish council and as such the councillors already have a steady workload.</p> <p>The extra councillor would also help local and proportionate democracy within the parish.</p> <p>Recently a councillor has resigned so there is currently one vacancy on the council, however this is quite unusual for Frampton on Severn Parish Council which normally has a full complement of councillors and the Parish Council expects the vacancy to be filled very soon.</p>		
CGR1/FOS/2	Frampton On Severn	Parish Councillor	<p>1. Increasing or decreasing the number of Parish/Town councillors</p> <p>3. Creating or changing your existing Parish Ward Boundaries</p>	<p>We are currently experiencing a burst of new developments in the village, one being constructed at the moment which contains 19 new properties, along with two new proposals totaling another 109 properties. From discussions with developers and District and County Councillors we think it is likely that they will be granted planning permission in the next 6 - 12 months. This equates to an increase of around 20% on the current village population. Frampton On Severn Parish Council is a very active council and so workload on Councillors is already very high. I think that an additional Parish Councilor will be required in order to maintain the standard of representation and support that we try to deliver across the Frampton On Severn</p>	<p>Attachment 4 Attachment 5</p>	<p>As Chair of the Parish Council i am aware of the pressure on our volunteer Councillors. I am fairly certain that these developments will be passed and so i would ask that this request is given robust consideration.</p>

				<p>community. As part of this I also think that we will need to establish a new Parish ward in the Oatfield area.</p> <p>Attached is the site layout for the Lake Lane development which is currently half way through construction. I have also attached the proposed site layout from Seven Homes for the 80 properties at Oatfield. This is currently waiting for outline planning permission, and is being discussed as part of the review of the Draft Local Plan. I do have a site layout for the third proposed development, but i have been asked by the developer not to share this at this stage.</p>		
CGR1/FOS/3	Frampton On Severn	Parish Councillor	1. Increasing or decreasing the number of Parish/Town councillors	<p>Frampton on Severn is a parish with about 550 houses. There are currently 19 houses being added near Lake Lane and there are likely to be a further 50 to 80 houses to the West of Whitminster Lane. Preliminary plans are also being considered for additional houses to the East of Whitminster Lane. This amounts to an increase in the region of 20%, in the number of houses. I recommend the addition of at least one more Parish Councillor.</p>	No, I do not have any supporting documents.	None.

HUNTS GROVE PARISH COUNCIL

Reference	Parish/Town Council	Connection to the Parish/Town Council	Will the Parish/Town Benefit from any of the below options: <ol style="list-style-type: none"> 1. Increasing or decreasing the number of Parish/Town councillors 2. Merging or splitting your Parish/Town Council 3. Creating or changing your existing Parish Ward Boundaries 4. Changing the name of your Parish/Town Council 5. Grouping or de-grouping together with a neighbouring Parish/Town Council 6. Abolishing your parish so that it becomes an un-parished area 	Justification	Supporting Evidence	Further Comments
CGR1/HG/1	Hunts Grove	Resident	1. Increasing or decreasing the number of Parish/Town councillors	Hunts grove is growing, and the land management structure is unfair to residents. The councils want to address this and needs support to do this.	No, I do not have any supporting documents.	None.
CGR1/HG/2	Hunts Grove	Resident	None of the above.		No, I do not have any supporting documents.	None.
CGR1/HG/3	Hunts Grove	Resident	1. Increasing or decreasing the number of Parish/Town councillors	Increasing councillors	No, I do not have any supporting documents.	None.
CGR1/HG/4	Hunts Grove	Resident? Hunts Grove Community Group	1. Increasing or decreasing the number of Parish/Town Councillors	<p>My first point would be, do not merge with another parish, the residents of Hunts Grove have been paying into the 'system' to benefit other residents of the parish as we are still under the developer, not a fair system.</p> <p>My second point would be, as a district / parish council, try to adopt the rest of hunts grove from the developers, and then look at reducing / disbanding the parish council.</p> <p>Hunts Grove is a lovely village, and has the potential to be one of the best in the region, but it has a split personality, the managed side, and the adopted side. Adopted shouldn't pay more, but managed shouldn't</p>	<p>No, I do not have any supporting documents.</p> <p>I'm a resident of the adopted side, the evidence was provided by the developer and council... So</p>	We need you to apply pressure via future planning or any means at your disposal, as the main road into the village is overdue, so is the community centre, and sporting fields... Stop the developers

				<p>be managed ! We pay enough into the local council with ever reducing services, this needs the council and developers to put this to bed.</p> <p>After all, the parish is trying to do just that, but the question is, if all of Hunts Grove is adopted, then isn't that just a normal village, so why pay more in taxation ?</p>	it's on your files.	control of this area !!
CGR1/HG/5	Hunts Grove	Resident? Hunts Grove Community Group	1. Increasing or decreasing the number of Parish/Town Councillors	<p>Hunts Grove is expanding constantly and due to become a highly populated ward with a lot of teething problems.</p> <p>More councillors on the HG council will help ensure we are represented well and can win any contestments with Crest as the developer over their un-met responsibilities.</p> <p>There are more housing applications being made for as yet undecided pockets of land, any planning approvals for these need attention to ensure that helpful criteria are included - such as fulfilling previous obligations on original phases (public open space play facilities, road surfacing, sports and social facilities, allotments), further access road improvements (A38 junction and Naas lane surface quality and widening), green credentials,</p> <p>We also want the council to win the fight to abolish the Prime residents association and be fully adopted and managed by the council in finished phases asap.</p>	No, I do not have any supporting documents.	None.
CGR1/HG/6	Hunts Grove	Resident	1. Increasing or decreasing the number of Parish/Town Councillors	<p>More houses are being built all of the time and there will be many more residents over the coming years, I believe as many as 8,000. Over this period it would be appropriate to increase the number of councillors.</p>	No, I do not have any supporting documents.	None.
CGR1/HG/7	Hunts Grove	Resident	1. Increasing or decreasing the number of Parish/Town Councillors	<p>Hunts grove is a growing community and the council will need additional support to</p>	No, I do not have any supporting documents.	None.

				appropriately represent and serve the whole community.		
CGR1/HG/8	Hunts Grove	Resident	None of the above.	Sometime 'more' is not always the answer, a single voice can be easily lost in a crowd. Based on the little exposure I've had to the Parish Council it seems to work fine as it is but I don't think it should be decreased, grouped or merged.	No, I do not have any supporting documents.	None.
CGR1/HG/9	Hunts Grove	Resident	5. Grouping or de-grouping together with a neighbouring Parish/Town Council	Grouping small parish will make the things run smoothly. I think bigger/joint budget will make them work efficiently.	No, I do not have any supporting documents.	None.
CGR1/HG/10	Hunts Grove	Resident	1. Increasing or decreasing the number of Parish/Town Councillors		No, I do not have any supporting documents.	None.
CGR1/HG/11	Hunts Grove	Resident	1. Increasing or decreasing the number of Parish/Town Councillors	<p>The Parish of Hunts Grove is unique in Gloucestershire in that it represents a brand new and rapidly expanding new build estate. The existing planning permission is for 1,750 homes, with an additional 750 homes allocated in the local plan. Every week new properties are completed by the developer and new residents move to the parish. It is important that additional councillors are added to Hunts Grove Parish Council to ensure that the council is as diverse as the residents that they represent:</p> <ul style="list-style-type: none"> • All areas/phases of the development • All types of tenure (homeowners, shared ownership, renters and social tenants) <p>Hunts Grove is also unique in that it is being constructed from scratch by large & powerful construction companies [REDACTED]</p> <p>[REDACTED] There are a great</p>	No, I do not have any supporting documents.	None.

				many areas in which these developers have failed to uphold their promises and responsibilities to residents. It is vital that we have a strong Parish Council to represent residents and ensure that vital community infrastructure is finally delivered. I therefore support increasing the number of Parish Councillors.		
CGR1/HG/12	Hunts Grove	Resident	None of the above.		No, I do not have any supporting documents.	None.
CGR1/HG/13	Hunts Grove	Member of Parliament	1. Increasing or decreasing the number of Parish/Town Councillors	Us residents need a voice. The MP wasn't bothered when I reached out about the state of Hunts Grove and how none of the work has been finished.	No, I do not have any supporting documents.	None.
CGR1/HG/14	Hunts Grove	Resident	1. Increasing or decreasing the number of Parish/Town Councillors	Hunts Grove is getting bigger by the day, more people moving in, more cars. All of this requires looking after and who better than Hunts Grove PC but increasing numbers can only improve the upkeep of HG.	No, I do not have any supporting documents.	None.
CGR1/HG/15	Hunts Grove	Parish Council	1. Increasing or decreasing the number of Parish/Town Councillors	Hunts Grove Parish is a growing village, the 5 year forecast shows the parish with an electorate of 3191. There is 10 more years of development at Hunts Grove and the predicted population is circa 7,500. Hunts Grove Parish Council plans to adopt all the public realm within Hunts Grove which will significantly increase the workload of councillors. The public realm includes sports provision, community building, and public open spaces. The Parish Council arrange community events and is currently looking to offer youth provision.	No, I do not have any supporting documents.	None.

				The NALC guidelines for an electorate size of 3191 is 11 councillors. At the last co-option, the Parish Council had 3 candidates for one vacancy. We believe there is capacity within Hunts Grove to fill 11 seats on the council.		
CGR1/HG/16	Hunts Grove	Resident	None of the above		No, I do not have any supporting documents.	None.
CGR1/HG/17	Hunts Grove	Resident	1. Increasing or decreasing the number of Parish/Town Councillors	It's a new parish and a fast growing ones. The current management company preim and [REDACTED] are a poor show in terms of the vision sold and they have taken the service fees and there is nothing to show for it. Parks are not complete roads are just raised iron works. It needs to be controlled and ran by the people. With the village growing there is more to do.	No, I do not have any supporting documents.	None.
CGR1/HG/18	Hunts Grove	Resident	1. Increasing or decreasing the number of Parish/Town Councillors	Hunts grove parish council would likely need to increase in councillor numbers as hunts grove residents and property numbers grow, plus the potential adoption of phase 1 (under the condition that abolition of the private management company at hunts grove happens). We strongly feel that as residents in Gloucestershire and within the Stroud Council area that we should not be held to ransom by the poor performance of [REDACTED] & a private management company who are squandering our money. We would prefer our council tax to be put to better use (slightly increased if necessary) to have our Local Councillors and local people take care of us and the community, which would happen if the management company	No, I do not have any supporting documents.	None.

				<p>were to be abolished and control given to the local community and Parish Councillors.</p> <p>It's our understanding that [REDACTED] must be in breach of their original plans and agreements for Hunts Grove as a development.</p> <p>Currently the development is in severe breach of Health & Safety regarding road access. We purchased our property in May 2021 and were assured that "shortly" there would have been at least 2 access points into and out of the development & we are still waiting!!!</p>		
--	--	--	--	---	--	--

Appendix B

Community Governance Review – Cam Parish Council**Recommendation for Stroud District Council to considering following Full Council.****Background**

The development along Box Road has created a new, highly populated geographical zone within the Parish of Cam that has its own unique identity and character. It is primarily new build homes and includes the strategic allocations within the Millfields development (see Fig.1 – Millfields H1-H8 parcels), all development along the station side of Box Road and Coaley Junction. It is some distance from the general centre of Cam, meaning it can feel disjointed. However, residents of this area have already begun to establish a sense of community, with a Facebook group and Community Speed watch Action Group.

Proposal

A working party made up of parish councillors and officers reviewed the maps and population figures and debated the merits of any changes. The following recommendation was put forward to Full Council on Wednesday 7th December 2022 which was approved as its preferred outcome.

1. Create a new ward to encompass Box Road and the new development along the river Cam, including land allocation PS25 and the land allocation at Draycott (see fig.2)
 - Suggest the name of the ward should be 'Cam North Ward'
 - Suggest 2 Councillors for this ward with a future review increase the number of councillors once more housing is built
2. Cam West (division 1) slight boundary change to allow for creation of new ward (see Fig.3)
 - Suggest 8 Councillors for this ward
3. Cam East (division 2) slight boundary change to allow for creation of new ward (see Fig.4)
 - Request an increase from 7 Councillors to 8 Councillors for this ward

Fig.1 – Millfields H1-H8 parcels.

Box Road, along the back of Draycott and down to behind Tesco

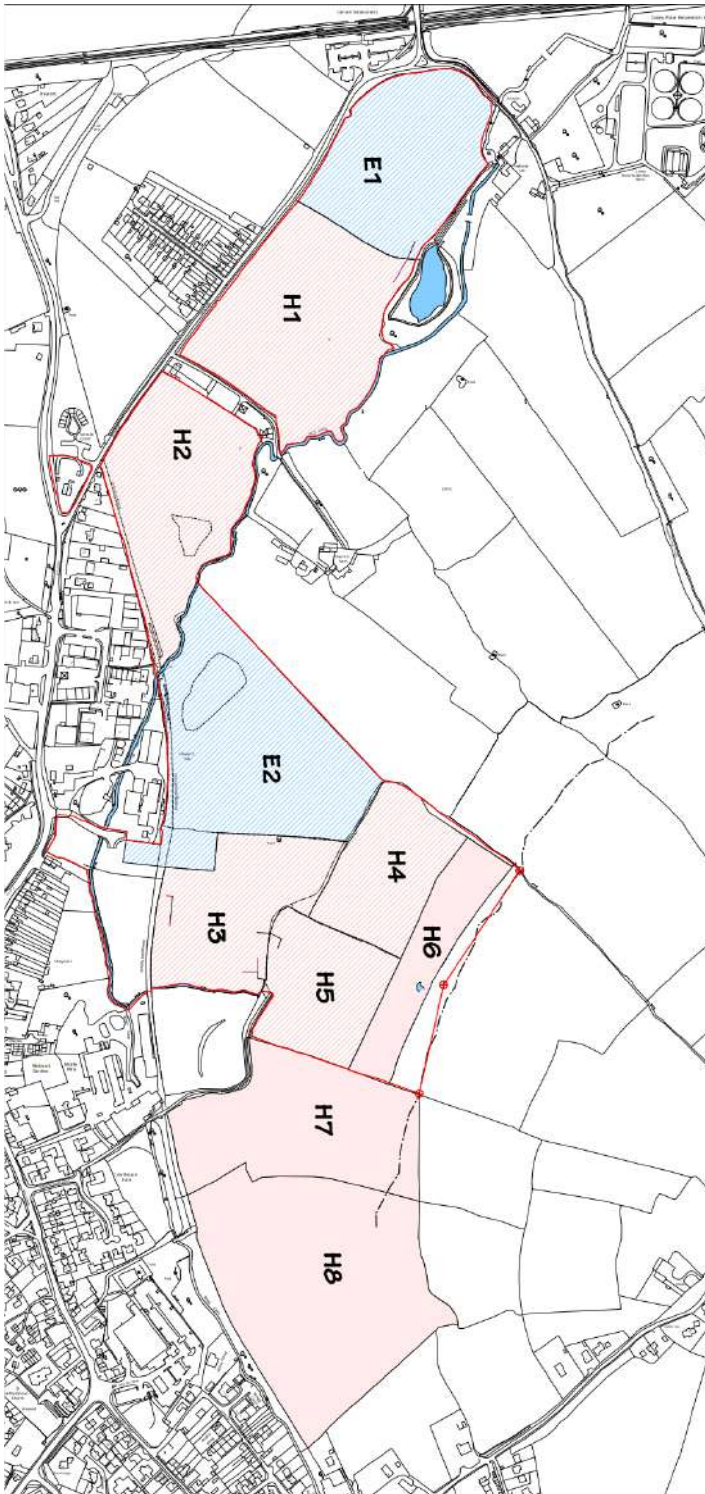


Fig.2 Creation of a new ward – Cam North ward

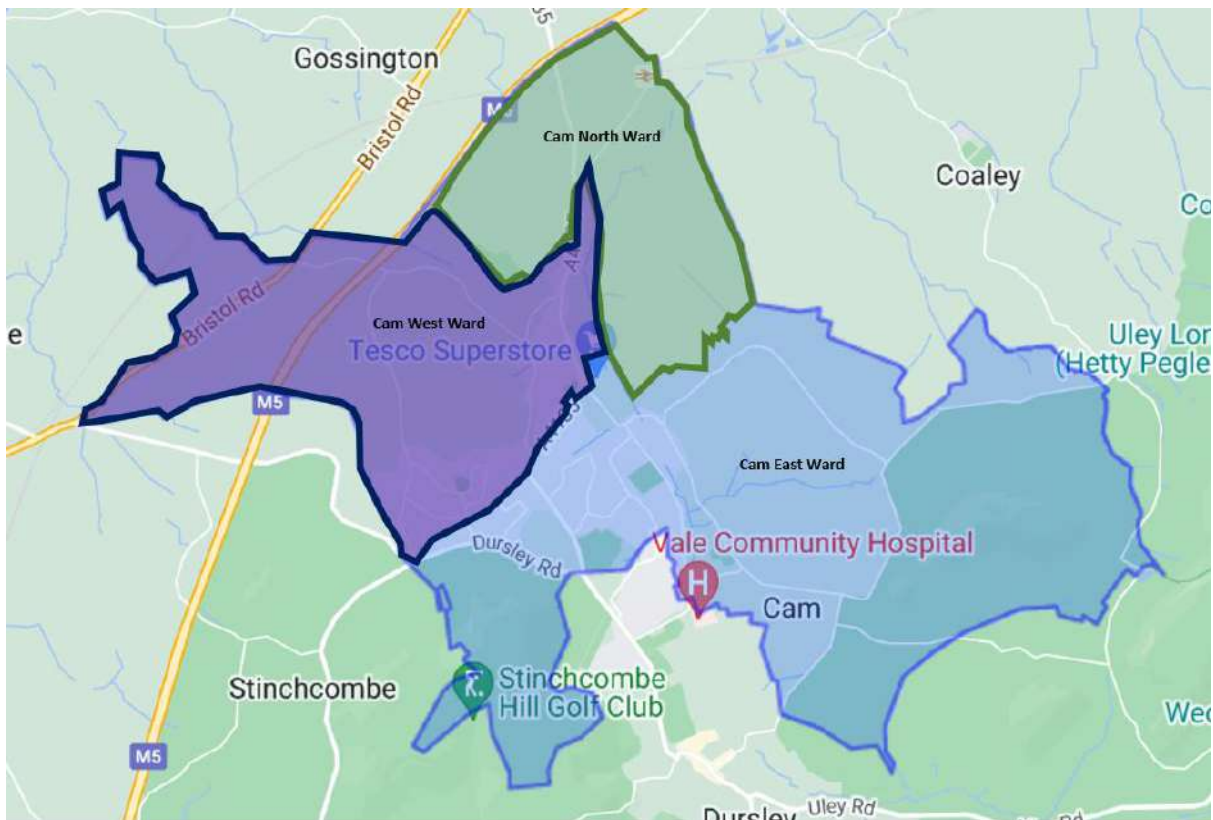
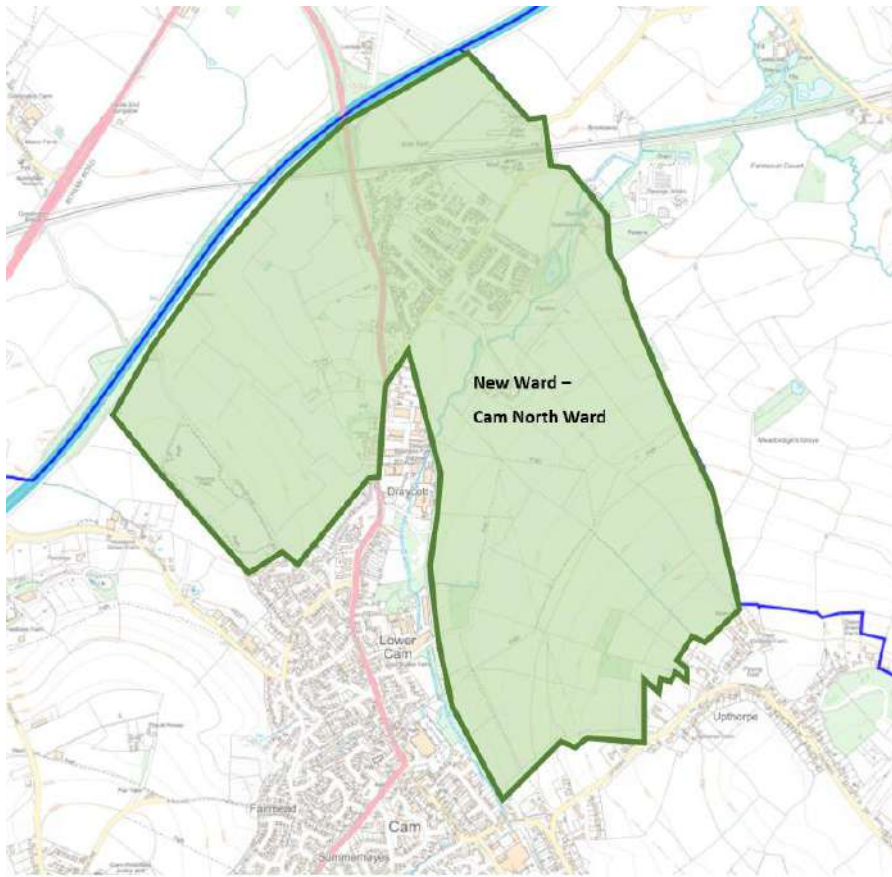
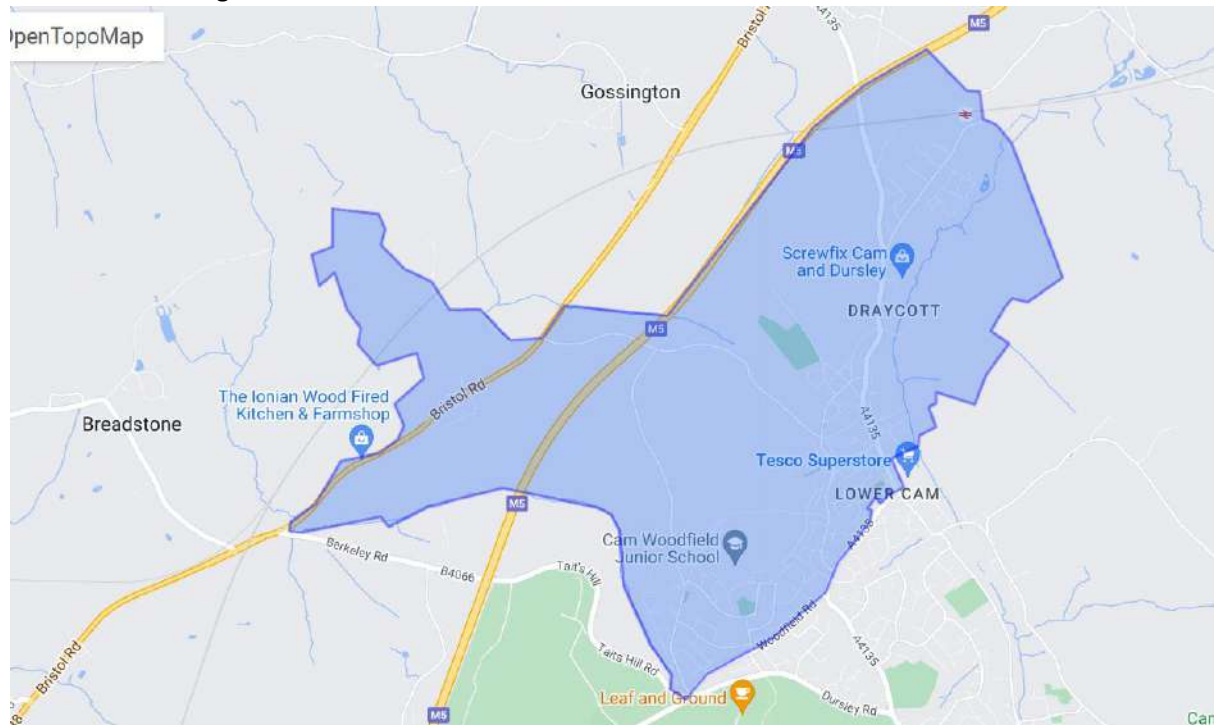


Fig.3 Cam West – slight boundary change

Cam West existing



Cam West proposed

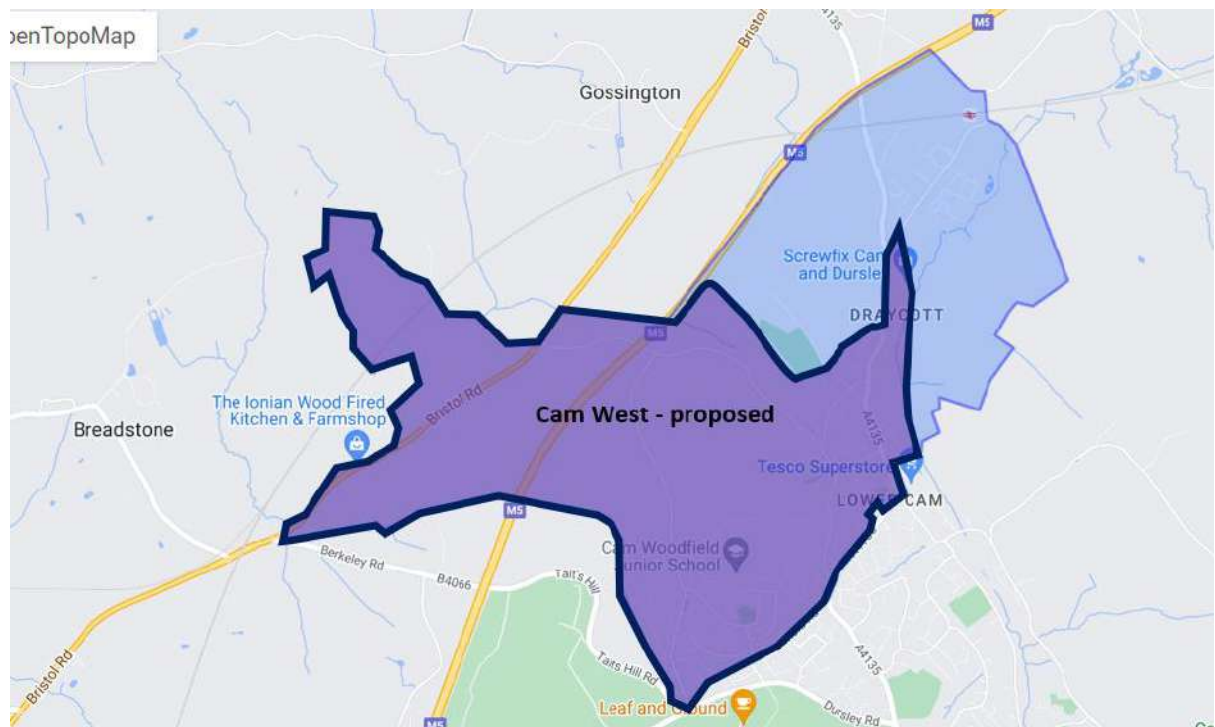
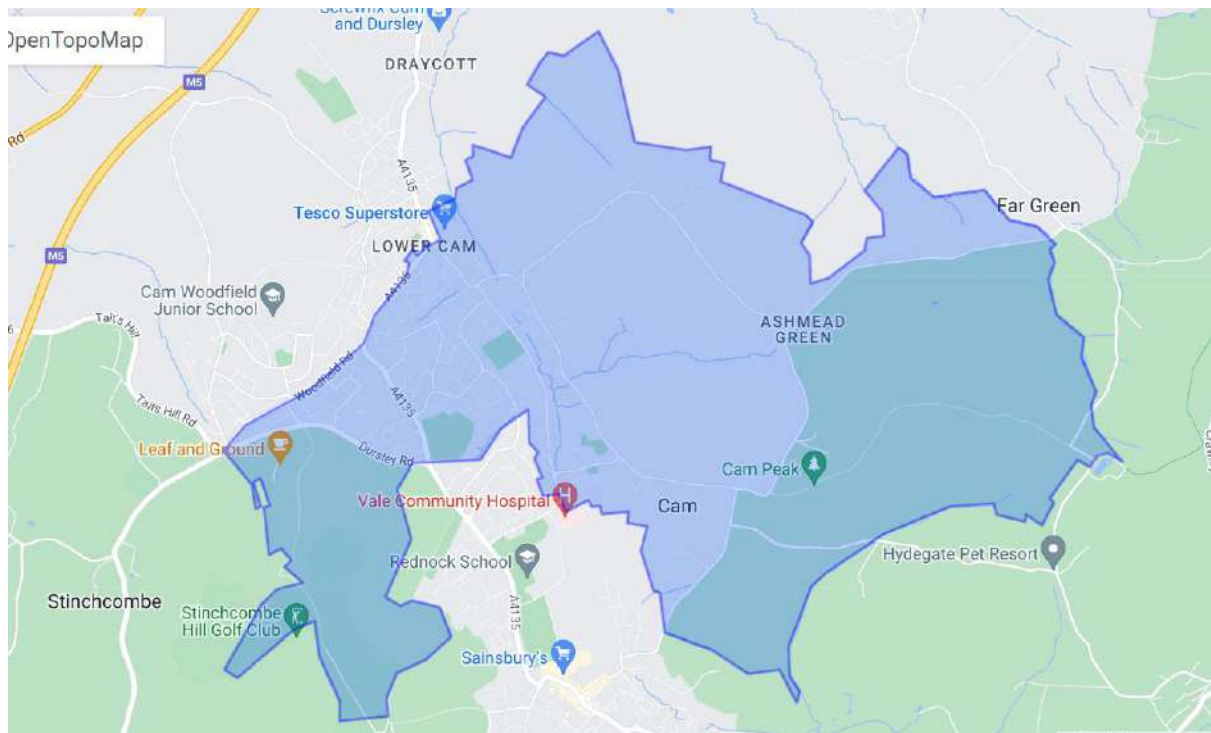
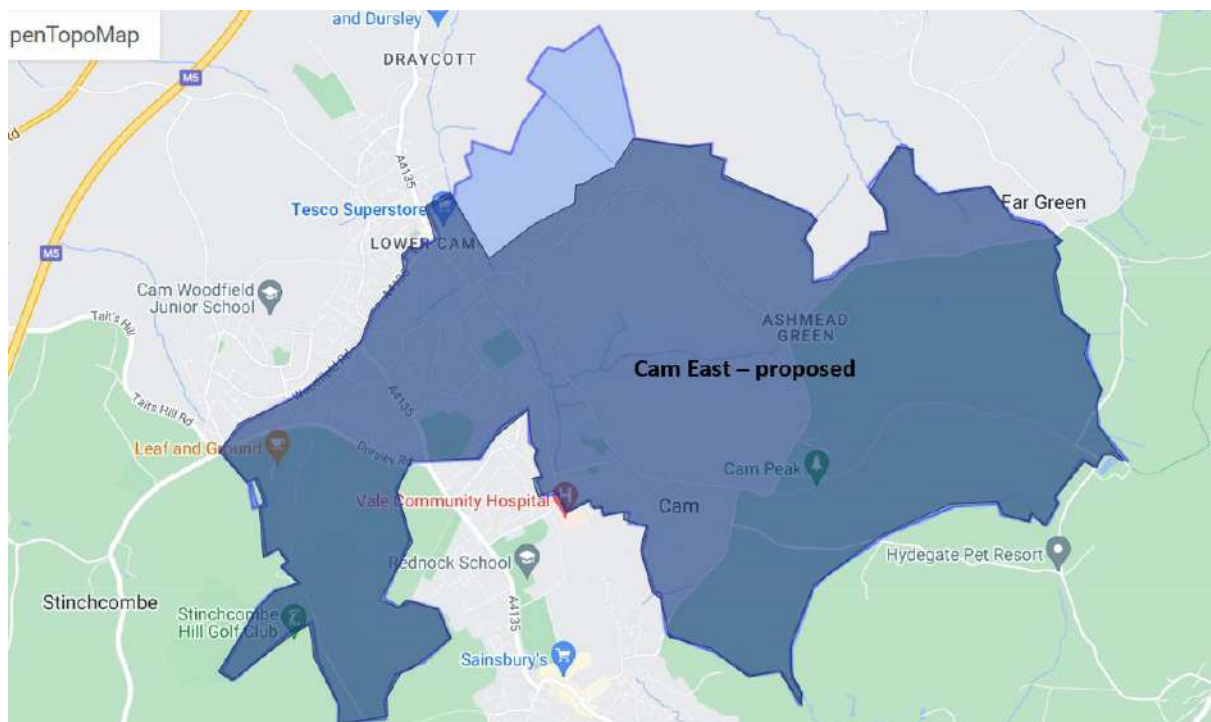


Fig.4 Cam East – slight boundary change

Cam East existing



Cam East proposed



COMMUNITY GOVERNANCE REVIEW OF EASTINGTON PARISH

Consultation Response from Eastington Parish Council (18 January 2023)

The parish council considered this response at its meeting on 12th January 2023.

Eastington Parish Council support Great Oldbury becoming its own parish as long as Great Oldbury residents had been fully consulted to determine their collective view. However, the parish council would want to retain the rural hamlets of Nastend, Westend and Nupend within the boundary of Eastington parish as those hamlets have a historic identity within Eastington. In addition, there are no roads connecting the rural hamlets with Great Oldbury. There is only the main access road to Great Oldbury off Grove Lane.

Great Oldbury is a new development which on completion will consist of 1350 houses. When any proposed changes take effect in May 2024, there would be approximately 900 dwellings occupied in Great Oldbury, which is larger than the rest of the Eastington parish put together. It has a different character and identity to Eastington village. Great Oldbury already has its own new Primary School, playing fields and a small play area, and will soon have a Community Hall, further play area, and a small retail centre.

Great Oldbury has its own Community Group, which hold regular monthly meetings, and has shown that it can manage its own affairs. Their needs are different to those of the historical Eastington parish. The Great Oldbury Community Group has discussed this at a couple of their meetings, and they have felt, as a group, that Great Oldbury becoming a parish would certainly be worth exploring further.

At the May 2021 SDC elections, Eastington Parish Council was allocated an additional 2 councillors due to the growing size of the Great Oldbury development within its parish. This took the number of councillors up from 9 to 11 councillors. This was to help with the additional workload of managing additional facilities and services. Since May 2021, Eastington Parish Council has not been able to fill all its councillor vacancies. There is currently 1 councillor on Eastington Parish Council who lives in Great Oldbury. This is further evidence that if Great Oldbury became its own parish, it is likely it would draw more Councillor interest in an independent Great Oldbury Parish Council.

There is a landscaping buffer around Great Oldbury that would be ideal as a boundary. We would envisage the perimeter of the Great Oldbury development would form most of the new parish boundary, with the historical Eastington hamlets of Nupend, Westend and Nastend staying within Eastington parish.

Eastington Parish Council would like Great Oldbury residents to contribute to the decision to determine what parts of Great Oldbury would be in any new Great Oldbury parish. For instance, whether to include the parts of Great Oldbury which are currently within the Stonehouse boundary, or whether the new Harwood development would be part of a Great Oldbury parish?

The list below outlines other potential options for Great Oldbury, any of which Eastington Parish Council would support, should the parishioners of Eastington, Great Oldbury, Stonehouse and Standish be in agreement.

- Great Oldbury stays in Eastington parish (no change to the existing arrangement),
- Great Oldbury moves to Stonehouse parish,
- the boundaries are changed so that part of Great Oldbury is in Eastington parish and part is in Stonehouse town.

The option for Great Oldbury to become its own parish, would also involve further options to be considered, such as where the boundary would be drawn.

Appendix B

COMMUNITY GOVERNANCE REVIEW OF FRAMPTON ON SEVERN PARISH COUNCIL
CONSULTATION SURVEY

Response from Frampton on Severn Parish Council (20 January 2023).

The parish council considers that it will need an additional councillor in 2024-25 as the electorate of the parish is likely to increase by about 20% with the proposed developments in the next 2 to 3 years.

There has been an increase in development in Frampton on Severn during the last year and potentially further sites will be granted. At present, 19 houses are being built on Lake Lane. There could be a further 80 properties at Oatfield, dependent on the Local plan and planning permission being granted. Plus there is the potential for an additional 20 or 30 dwellings in other areas of Frampton on Severn. This level of development would result in a significant increase in the total number of properties and the size of the electorate of Frampton on Severn.

Number of electors (January 2023): 1117

Electorate could increase by 193 (using a projected forecast of 1.5 electors per property)

Increase in electorate: 17%.

Number of dwellings (January 2023): 590

Total new dwellings by 2024-25: 129

Increase in dwellings: 22%

An additional councillor would be needed, to take the number of councillors up from 9 to 10 councillors, to help with the additional workload of managing additional facilities and services. Frampton on Severn is a very active parish council and as such the councillors already have a steady workload.

The extra councillor would also help local and proportionate democracy within the parish.

Recently a councillor has resigned so there is currently one vacancy on the council, however this is quite unusual for Frampton on Severn Parish Council which normally has a full complement of councillors and the Parish Council expects the vacancy to be filled shortly.



Street-scene A-A



Street-scene B-B - Along Whitminster Lane



KEY



<input checked="" type="radio"/> Preliminary	<input type="radio"/> Design	<input type="radio"/> Information	<input type="radio"/> Comment	<input checked="" type="radio"/> Planning	<input type="radio"/> Construction
Client: [Redacted]	Scale: 1:200	Drawing Size: A1			
Project: Whitminster Lane, Frampton on Severn	Project No. [Redacted]	Drawing No. PL003			
Drawing: Indicative Street Scenes	Date: Jan 2022	Revision: -			



NOTES

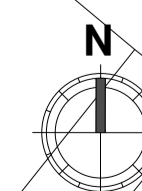
- AFFORDABLE UNITS**
 PLOTS 1-3 (x3) 2-BED TERRACE
 PLOTS 6-9 (x4) 1-BED FLAT
- OPEN MARKET UNITS**
 PLOTS 4-5 (x2) 2-BED
 PLOTS 10-16 (x7) 3-BED
 PLOTS 17-21 (x5) 4-BED

Proposed Key

- Tarmac Road
- Tarmac Pathways
- Tarmac Parking Areas
- Private Gardens
- Amenity Space

All materials to match existing
 All dimensions showing are structural build sizes not finished sizes
 Do not scale from this drawing (other than for planning purposes), contractor to verify all dimensions before setting out, commencing work or placing orders

Project Proposed Extension and Alterations		
Land at Frampton Industrial Estate Lake Lane, Frampton on Severn, GL2 7HG		
Client -		
Drawing Title Proposed Site Plan		
Date 15-06-19	Drawing No. PL100	Rev E
Drawn by █	Page Size A1	Scale 1:200



15

16

7

COMMUNITY GOVERNANCE REVIEW STAGE 2 CONSULTATION RESPONSES

EASTINGTON PARISH COUNCIL

Paper - Question – Do you support the draft recommendations including the boundary amendment to move your address from Eastington Parish Council to Great Oldbury parish Council?

Reference	Parish/Town Council	Connection to the Parish/Town Council	Do you agree with the draft recs?	Comments
CGR2/GOP/1	Eastington Parish Council	Resident	No	See Appendix 1
CGR2/GOP/2	Eastington Parish Council	Resident	Yes	No comments
CGR2/GOP/3	Eastington Parish Council	Resident	Yes	No comments
CGR2/GOP/4	Eastington Parish Council	Resident	Yes	No comments
CGR2/GOP/5	Eastington Parish Council	Resident	Yes	No comments
CGR2/GOP/6	Eastington Parish Council	Resident	Yes	No comments
CGR2/GOP/7	Eastington Parish Council	Resident	Yes	No comments
CGR2/GOP/8	Eastington Parish Council	Resident	Yes	No comments
CGR2/GOP/9	Eastington Parish Council	Resident	Yes	No comments
CGR2/GOP/10	Eastington Parish Council	Resident	Yes	No comments

CGR2/GOP/11	Eastington Parish Council	Resident	Yes	No comments
CGR2/GOP/12	Eastington Parish Council	Resident	Yes	The proposed Great Oldbury parish should help create a closer, supportive residents community with interests in common for this large fast growing development, which is in need of the long overdue promised facilities and amenities. It is not apparent that either Eastington or Stonehouse councils have been very proactive in their endeavour to progress the above status quo.
CGR2/GOP/13	Eastington Parish Council	Resident	Yes	I feel remaining part of Eastington parish will result in the specific needs of GO residents not being met. We need a Parish Council focused on the needs of the GO area only.
CGR2/GOP/14	Eastington Parish Council	Resident	Yes	The proposed change would allow for improved democratic representation of the many new homes and residents of Great Oldbury. As a 'new village' there are many issues to be resolved.
CGR2/GOP/15	Eastington Parish Council	Resident	Yes	Creates a response to a new 'neighbourhood' with common issues to address.
CGR2/GOP/16	Eastington Parish Council	Resident	Yes	This is such a large estate, it makes sense for it to have its own parish. That way we can manage street repairs etc quickly.
CGR2/GOP/17	Eastington Parish Council	Resident	Yes	I have never understood why I come under 'Stonehouse' – I feel embarrassed to say I live there. Great Oldbury is 2 miles away and closer to Eastington – makes no sense whatsoever! Please do change it to Great Oldbury
CGR2/GOP/18	Eastington Parish Council	Resident	Yes	No concerns with plans and in full agreement.
CGR2/GOP/19	Eastington Parish Council	Resident	Yes	I think the needs of this new 'parish' are very different from the long-established community at Eastington. I've got the impression, based on the occasional conversations with Eastington residents that they 'look down' on the new estate as 'foreigners' and I think we want a council that recognises out separate needs
CGR2/GOP/20	Eastington Parish Council	Resident	Yes	We would like a local Great Oldbury food shop. Also a doctors surgery would be appreciated.
CGR2/GOP/21	Eastington Parish Council	Resident	Yes	Will we be getting shops/other local amenities?
CGR2/GOP/22	Eastington Parish Council	Resident	Yes	Fully support
CGR2/GOP/23	Eastington Parish Council	Resident	Yes	This would allow better control of the Great Oldbury area and would better suit the residents' needs.
CGR2/GOP/24	Eastington Parish Council	Resident	Yes	Completely in support of this and agree that its in the nest interest of the estate.
CGR2/GOP/25	Eastington Parish Council	Resident	Yes	It allows more local responsibility.

CGR2/GOP/26	Eastington Parish Council	Resident	Yes	As the two halves of Great Oldbury begin to merge together it makes more sense for issues involving the area are dealt with uniformly using one parish council. There are a large number of properties here and more to come, it would be fairer to Stonehouse and Eastington to have time to focus on properties within their areas and not half of Great Oldbury in addition.
CGR2/GOP/27	Eastington Parish Council	Resident	No	<ol style="list-style-type: none"> 1. Eastington church has a pitiful average congregation and could do with being clearly identified as the church for the new arrivals in Gt Oldbury, albeit that most of them will be godless! 2. In my 20 years as chair of governors of a primary school (elsewhere) I found the Parish council to be less often a help than a hindrance, but it seems to me that having both Eastington school and the new Great Oldbury school under the aegis of the same council could only be beneficial.
CGR2/GOP/28	Eastington Parish Council	Resident	No	I can see no reason to add an extra layer to local government that is currently working or the increased costs involved. Extra councillors to the local parish councils will have the same effect of local views.
CGR2/GOP/29	Eastington Parish Council	Resident	Yes	No comments
CGR2/GOP/30	Eastington Parish Council	Resident	Yes	No comments
CGR2/GOP/31	Eastington Parish Council	Resident	No	No comments
CGR2/GOP/32	Eastington Parish Council	Resident	Yes	Given the size of the proposed new G O parish and the amenities that will be provided – e.g. community centre/open spaces – I feel it is necessary for the restructure to take place
CGR2/GOP/33	Eastington Parish Council	Resident	Yes	No comments
CGR2/GOP/34	Eastington Parish Council	Resident	Yes	No comments
CGR2/GOP/35	Eastington Parish Council	Resident	Yes	No comments
CGR2/GOP/36	Eastington Parish Council	Resident	Yes	We feel that any decisions involving Great Oldbury should be agreed by the residents.
CGR2/GOP/37	Eastington Parish Council	Resident	No	<p>My reason for NOT supporting the proposed new Parish of Great Oldbury is as follows:</p> <ol style="list-style-type: none"> 1. At the moment it is part of Eastington which is operating successfully 2. To have a new Parish will require an extra area of bureaucracy with the with need for additional councillors to be employed and paid along with he supporting staff thereby incurring additional costs 3. If will be necessary to find additional people to be councillors, how easy will this be? 4. The proposed new Parish cutes right into the Eastington PC area and is bordered on 3 sides, this makes it a natural fit to be part of Eastington. 5. I agree that the small area hatched in green, part of Stonehouse should be part of the Eastington parish. 6. I do not agree with the inclusion of the large area hatched in green, part of Stonehouse, as this is an unnecessary increase in the size of the area of be covered. There is a natural boundary formed by the river as is used for the boundary with Standish PC
CGR2/GOP/38	Eastington Parish Council	Resident	Yes	I think its good to have a more focused view in the immediate area we live in.
CGR2/GOP/39	Eastington Parish Council	Resident	Yes	Great Oldbury has different issues to that of Eastington. For example, it has no village hall or community centre, it has no shops or post box or church.

				Eastington is already an established community who in the majority would have preferred Great Oldbury not to have been built. The two communities have different needs, and therefore need different councils.
CGR2/GOP/40	Eastington Parish Council	Resident	Yes	No comments
CGR2/GOP/79	Eastington Parish Council	Resident	Yes	No comments
CGR/GOP/112	Eastington Parish Council	Resident	Yes	No comments
CGR2/GOP/110	Eastington Parish Council	Resident	Yes	I think that due to the eventual population of Great Oldbury being very likely to exceed that of Eastington Parish, it makes complete sense for our area to be able to make its own decisions on local matters that will affect our own community.
CGR2/GOP/113	Eastington Parish Council	Resident	Yes	No comments

Online responses to question - Do you agree with the draft recommendations for the parish(es) you have selected to comment on?

Reference	Parish/Town Council	Connection to the Parish/Town Council	Do you agree with the draft recs?	Comments
CGR2/GOP/86	Eastington Parish Council	Local Community group (Keep Eastington Rural)	Yes	<p>The proposal to create a new Parish for Great Oldbury is timely and appropriate</p> <p>Timely, because the population of Great Oldbury is almost the same as the rest of Eastington Parish put together. The build-out of what is essentially a small town, is only half way through to it's 2031 scale and the 2023- 2040 Local Plan envisages at least one more phase to follow that.</p> <p>Timely also because the School is now established and other facilities such as the playing pitches and the Community Centre are well on the way. The latter two will require a strong community organisation to manage these assets effectively.</p> <p>Incidentally, The Shell garage is being upgraded to provide a Waitrose Local small supermarket, providing a true "corner shop"</p> <p>It is appropriate because there is already a recognisable community spirit, which was eloquently expressed by the residents in the previous consultation.</p> <p>Finally, it is clear that the residents are asking for Parish Council powers, it is not being thrust upon them.</p>
CGR2/GOP/87	Eastington Parish Council (BOTH)	Resident	Yes	I live in Great Oldbury and can see the sense in having one parish council for the area rather than 2 as this will help build a stronger community

CGR2/GOP/88	Eastington Parish Council (BOTH)	Resident	Yes	No comments
CGR2/GOP/89	Eastington Parish Council (BOTH)	Resident	Yes	No comments
CGR2/GOP/90	Eastington Parish Council (BOTH)	Resident	Yes	It makes sense to me that a development of this size is classed as a whole parish rather than being split in two. It would create more of a community feel around Great Oldbury. It would also be good to have a parish councillor representing the whole community rather than to do this separately under two parishes.
CGR2/GOP/96	Eastington Parish Council	Resident	Yes	No comments
CGR2/GOP/103	Eastington Parish Council	Parish/town clerk	In part	The parish council agrees that Great Oldbury should have its own parish council, and that the historical hamlets, including Nupend, Westend and Nastend should remain part of Eastington.
CGR2/GOP/104	Eastington parish Council (BOTH)	Resident	No	As a new community I completely and enthusiastically support the formation of "Great Oldbury Parish Council". I object to the proposed boundary. The boundary, in my opinion, should follow the current boundaries with Standish Parish, Stonehouse Town Council, Whitminster Parish and Frampton-On-Severn Parish with a dividing boundary with Eastington Parish following the line of the canal (existing and proposed). My reasons are: 1. Residents of the Nastend, Westend and Nupend hamlets will be isolated from Eastington Parish and should be given the democratic choice of which Parish they wish to reside. 2. New developments, housing and industrial, in and around Great Oldbury will affect residents of Nupend, Westend and Nastend and these residents should have a voice on the Great Oldbury Parish Council. 3. Although there is no vehicular access directly into the Great Oldbury from the neighbouring hamlets, there is a network of paths and bridleways which will be heavily used by walkers and cyclists. There will be issues and conflicts between old and new residents which can only be resolved in the same Parish Council. 4. The retail development around the Shell Service station on the A419 called Great Oldbury Service Station should be part of Great Oldbury Parish, as any further development on the site will affect Great Oldbury residents much more than residents of adjacent parishes. (It is ironic that an area called Great Oldbury Service Station should not be included in the Great Oldbury parish). 5. Further development will inevitably take place north of the Great Oldbury Service Station and either side of Grove Lane. (Current proposals are already planned in the neighbouring parish of Whitminster for 2000 new homes). The expertise of Great Oldbury Parish Council in dealing with developers will be of great benefit to current and proposed residents, as well as residents of the hamlets of Westend and Nupend. Note: There is a case that Great

				<p>Oldbury Parish Council should extend into Whitminster Parish Council, to the A38, and should be discussed.</p> <p>6. The proposed Eco Park and building of Forest Green Rovers new stadium is welcomed by most Great Oldbury residents, unlike the opposition expressed to the “West of Stonehouse” proposals by Eastington Parish Council and Stonehouse Town Council, over recent years. Only a Great Oldbury Parish Council can protect the interests of local residents and ensure that locals reap the benefits of development, in negotiations.</p> <p>7. The same reasoning can be applied to anticipated development of the Stroudwater Canal, which I believe should form the southern border of Great Oldbury Parish. The rewards and benefits of developments around the canal will be of far more interest and concern to Great Oldbury residents than residents of neighbouring parishes. As a growing community, Great Oldbury Parish Council will benefit from increasing funds, from a very healthy Annual Precept, to further assist the improvements of facilities in the surrounding area.</p> <p>8. Using the Stroudwater Canal as the southern boundary of Great Oldbury Parish Council will also give Great Oldbury Parish Council the rights to comment on issues and problems caused by the A419, something that I believe will become an important subject of concern in the future.</p> <p>9. Finally, the “ghettoization” of Great Oldbury, by drawing a tight line around the current housing development is, I believe, lazy democracy and an attempt to avoid detailed discussion that should take place regarding the creation of a new Parish Council. (The first new parish council in the Stroud area for many years). It is also depriving the surrounding hamlets and landowners the benefits of a Parish Council that will have previously dealt with housing and industrial developers and have the funds to make a difference. The current issues around “Stroudwater 13” and the noisy “cheese-factory” could have been anticipated and prevented by an established and efficient Great Oldbury Parish Council.</p> <p>The two maps attached highlight, in graphic form, the ridiculous nature of the proposal suggested in the Governance Review.</p>
CGR2/GOP/105	Eastington Parish Council	Resident	In part	Making Great Oldbury its own small district would restrict those residents on the new development from having any say or input in the further of our surrounding areas or even such things like the canal restoration. It is lazy formation and will effectively isolate the new community from everything else around it.
CGR2/GOP/106	Eastington Parish Council	Resident	No	I don’t agree that Great Oldbury should be separated as a parish of its own. Residents should be included in the existing parish boundaries; Eastington and Stonehouse were appropriate. The proposed new parish would create additional and unnecessary bureaucracy. Residents would prefer to feel part of the wider community and involved/included in decisions about their local amenities.
CGR2/GOP/107	Eastington Parish Council	Resident	No	I would like Great Oldbury to remain in the Eastington parish as the area that would be in the Great Oldbury parish is too small and wouldn’t cover then land around it.

EASTINGTON PARISH COUNCIL – HAMLET OF NASTEND

Question – Do you support the draft recommendations including the proposed boundary amendment **NOT to move your address from Eastington Parish Council to Great Oldbury Parish Council?**

Reference	Parish/Town Council	Connection to the Parish/Town Council	Do you agree with the draft recs?	Comments
CGR2/GOP/50	Eastington Parish Council	Resident	Yes	Eastington as a rural village will better represent Nastend as a rural hamlet. Whereas 'Great Oldbury' is a development of brand new houses with no historical merit.
CGR2/GOP/51	Eastington Parish Council	Resident	Yes	Please leave us in Eastington where we belong.
CGR2/GOP/52	Eastington Parish Council	Resident	Yes	The rural aspect of part of Nastend has already been decimated by the proximity – and especially the height – of the new row of properties (adjoining the last part of Nastend lane) which overlook 'The Cottage' and the Farmhouse. The raised foundations and subsequent overall height of the row of new properties was never anticipated in the planning reviews. How any Planning Authority thought it was acceptable in a rural hamlet is beyond belief.
CGR2/GOP/53	Eastington Parish Council	Resident	Yes	I wish to remain in Eastington Parish. Our property has been in Eastington Parish since before 1700 and it bests reflects the identity of Nastend. I also have an allotment in Eastington and have put 9 years of work into it. The new build have a very different feel to the hamlets and I would be very against leaving Eastington parish.
CGR2/GOP/54	Eastington Parish Council	Resident	Yes	No comments
CGR2/GOP/55	Eastington Parish Council	Resident	Yes	I would like to stay part of a small community.
CGR/GOP/56	Eastington Parish Council	Resident	Yes	There is no sensible reason to move away from Eastington
CGR/GOP/57	Eastington Parish Council	Resident	Yes	We have always been part of a small village parish and I have no ambitions to join a commuter community in a new parish.
CGR/GOP/58	Eastington Parish Council	Resident	Yes	Nastend is always been part of Eastington, like Nupend and Westend. I think it better for Great Oldbury to form a parish council of their own to serve a new development.

CGR/GOP/59	Eastington Parish Council	Resident	Yes	Nastend would best be served by Eastington parish Council, not Great Oldbury. Great Oldbury being a new estate will have different needs.
CGR/GOP/60	Eastington Parish Council	Resident	Yes	No comments
CGR/GOP/61	Eastington Parish Council	Resident	Yes	Nastend has been historically linked to the Eastington Parish. I should like it to remain so.
CGR/GOP/62	Eastington Parish Council	Resident	Yes	I was so against the building of the Great Oldbury estate. I certainly do not want to be part of it now. I will stay with Eastington Parish thank you.
CGR/GOP/109	Eastington Parish Council	Resident	Yes	No comments

EASTINGTON PARISH COUNCIL – HAMLET OF NUPEND

Question – Do you support the draft recommendations including the proposed boundary amendment **NOT to move your address from Eastington Parish Council to Great Oldbury Parish Council?**

Reference	Parish/Town Council	Connection to the Parish/Town Council	Do you agree with the draft recs?	Comments
CGR2/GOP/63	Eastington Parish Council	Resident	Yes	We are a small community and its nice to keep it as normal, without including the new estate.
CGR2/GOP/64	Eastington Parish Council	Resident	Yes	Great Oldbury completely overwhelms the existing parish and will be provided with its own amenities. I has very different needs and concerns to Eastington and its traditional hamlets and should be a separate parish.
CGR2/GOP/65	Eastington Parish Council	Resident	Yes	Great Oldbury Estate is a new, modern development, contrasting dramatically with the Parish of Eastington and its quaint and ancient hamlets. Their requirements and aspirations are distinct and discrete. Combining them into one parish would be to the detriment of both, as attending to the upkeep and development of either group would require time and resources irrelevant to the other.
CGR2/GOP/66	Eastington Parish Council	Resident	Yes	We believe that staying in Eastington will provide the best safeguard for our future.
CGR2/GOP/67	Eastington Parish Council	Resident	Yes	I never wanted to G O estate to be built so why would I want to be part of their parish council. The estate is nothing like an old village and the needs are therefore very different!

CGR2/GOP/68	Eastington Parish Council	Resident	Yes	<p>Firstly, how did the public get an invite last October to start considering changes to Governance arrangements? Secondly why would the new housing development need its own parish council – the idea was to integrate the residents on this estate to the existing community not to alienate them/us further.....?!!</p> <p>Thirdly, Nupend is a very old hamlet. How would lumping us together with a brand new estate that has no interest in the old be of benefit? Great Oldbury Estate should remain part of Eastington Parish so that we can all work and live together in harmony, tackling issues that are created together, creating mutual respect for our communities. Its already a ‘them and us’ feeling (mostly caused by dog poo/litter dropping etc by walkers through the village) Lastly how will I know this has been read and considered.</p>
CGR2/GOP/69	Eastington Parish Council	Resident	No	<p>Nupend has always been part of the Eastington Parish. Great Oldbury must be kept separate to us. We didn’t want the Great Oldbury Estate to be so close to Nupend. Many people strongly opposed it so why now should we want to be part of it?? I grew up in Nupend and always felt part of the Eastington parish. Also Nupend will lost its separate identity.</p> <p>I choose to live in Nupend and invested large amount of money in out home due to the once lovely location. We have partially lost our identity now. Making it part of the old Oldbury Parish, Nupend will further lose its identity. I think the Eastington Parish should remain as is. Or else we will become just part of the urban sprawl that is enveloping us.</p> <p>More proposed housing to out right (Whitminster development) Plus the huge new stadium/parking/business park. Where does it stop!! What benefits have we encountered, nothing! More traffic, loss privacy, loss fields, loss of views. I realise the need for new houses but.... We have had a lot plonked on our door step with more to come!! Keep Nupend, Nastend, Westend in the Eastington parish!!</p>
CGR2/GOP/70	Eastington Parish Council	Resident	Yes	<p>Eastington was around before Great Oldbury so should be the dominant parish, and Great Oldbury should be asked if they want to join Eastington. We strongly wish to remain in the parish of Eastington.</p>
CGR2/GOP/71	Eastington Parish Council	Resident	Yes	<p>Leave us alone. We should remain as Eastington parish. You have spoilt our quality of living already and allowed that awful estate to be built close to our quiet hamlet already. On top of this you allow Forest Green Football Club to also ruin the area we live in when the current stadium is too big for them A <i>[sic]</i> no requirement for you to allow this awful stadium to be built. The road network around here is already failing under the volume of traffic. Leave Forest Green in Forest Green! I am more than willing to give my views in person! Do not let anymore of this area be ruined. And stop giving in to Dale Vine.</p>
CGR2/GOP/72	Eastington Parish Council	Resident	Yes	No comments
CGR2/GOP/73	Eastington Parish Council	Resident	Yes	I prefer to remain with the Eastington Parish Council, a well established Council to attend NUPEND’s needs.
CGR2/GOP/74	Eastington Parish Council	Resident	Yes	Its between a rock and a hard place – certainly no wish to be associated with a housing estate but Eastington isn’t much better!

CGR2/GOP/75	Eastington Parish Council	Resident	Yes	Nupend is a rural hamlet which has always been part of Eastington Parish and should remain so. The large Great Oldbury Estate should be separate.
CGR2/GOP/76	Eastington Parish Council	Resident	Yes	The fact that Great Oldbury will have its own Parish Council is a good idea – it being a large New Build within the last 3 or 4 years. Eastington Parish consisting of Eastington, Nupend, Nastend and Westend works very satisfactorily with our own Church, School and very active Eastington Play Group – shops, Hairdressers, Butchers and thriving Farm Shop. The parish of Eastington has successfully been in existence for many many years with a long standing history of which we are all extremely proud. PS – I have resided in Nupend for 61 years.
CGR2/GOP/77	Eastington Parish Council	Resident	Yes	As a resident of this hamlet for over 50 years, Eastington Parish has been Church, School, shops, events and friendships for all those years, residents of the hamlets have and still are Parish councillors, which should it be changed. No, no, no to amalgamating with a new development. It was initially called ‘West of Stonehouse’ – why is it not with Stonehouse If a new Parish is formed, where are they going to have public meetings, retail etc, they will be fighting for what they want. I hear complaints about having to use vehicles for everything, how many more houses will be built before facilities are produced, surely as a planning department you should be pushing for these things?
CGR2/GOP/80	Eastington Parish Council	Resident	Yes	No comments
CGR2/GOP/81	Eastington Parish Council	Resident	Yes	No comments

Online responses to question - Do you agree with the draft recommendations for the parish(es) you have selected to comment on?

Reference	Parish/Town Council	Connection to the Parish/Town Council	Do you agree with the draft recs?	Comments
CGR2/GOP/95	Eastington Parish Council	Resident	Yes	As a resident of Nupend I feel in order for our hamlet to retain its identity it MUST remain within the rural parish of Eastington.
CGR2/GOP/99	Eastington Parish Council	Resident	Yes	I support the draft recommendation that our address should NOT be moved from Eastington to Great Oldbury. I live in Nupend and feel the historic Hamlet of Nupend should stay within the parish of Eastington and NOT move to Great Oldbury new parish. Our interests as a small rural hamlet are better served by staying within a rural parish such as Eastington along with the other nearby Hamlets of Nastend and Westend.
CGR2/GOP/100	Eastington Parish Council	Resident	Yes	I support the draft recommendation that our address should NOT be moved from Eastington to Great Oldbury.

				<p>I live in Nupend and feel the historic Hamlet of Nupend should stay within the parish of Eastington and NOT move to Great Oldbury new parish.</p> <p>Our interests as a small rural hamlet are better served by staying within a rural parish such as Eastington along with the other nearby Hamlets of Nastend and Westend.</p>
--	--	--	--	---

EASTINGTON PARISH COUNCIL – HAMLET OF WESTEND

Question – Do you support the draft recommendations including the proposed boundary amendment NOT to move your address from Eastington Parish Council to Great Oldbury Parish Council?

Reference	Parish/Town Council	Connection to the Parish/Town Council	Do you agree with the draft recs?	Comments
CGR2/GOP/78	Eastington Parish Council	Resident	Yes	I would prefer my property to continue being under Eastington Parish Council as it would be much more personal for me than being part of a big Great Oldbury Parish Council. Also I feel that my Council Tax could well rise if any changes were made, as Great Oldbury has much more to offer than Westend has.
CGR2/GOP/108	Eastington Parish Council	Resident	Yes	I am pleased to see Westend/Nupend will not be added to the new Great Oldbury Parish. I feel that we are much better suited to remain in Eastington Parish.

Page 267

Online responses to question - Do you agree with the draft recommendations for the parish(es) you have selected to comment on?

Reference	Parish/Town Council	Connection to the Parish/Town Council	Do you agree with the draft recs?	Comments
CGR2/GOP/91	Eastington Parish Council	Resident	Yes	<p>Westend is an historic hamlet, one of the many 'ends' of Eastington - I think history should be preserved as far as possible unless there are pressing needs otherwise.</p> <p>My house, like the majority in Westend, dates back to the mid 1800s. All the houses in Westend are unique - we are like chalk and cheese when compared to the new builds in Great Oldbury. We are an infinitely better fit with Eastington Parish Council than a Council representing the needs of a new housing estate.</p> <p>There are several properties in the hamlets with stables, I am not sure that a GO Council would adequately consider</p>

Appendix C
Agenda Item 12

				<p>equestrian needs and the importance of the bridle paths.</p> <p>From my conversations with GO residents, I have found that there is a great deal of commuting out of the area to work, very few have a connection with the locality, having chosen it as a location as it is cheaper than Bristol and is close to J13.</p> <p>The new GO Parish Council will be concerned with the building a new community centre, new shops, and a new community altogether. We already have these things in Eastington, our needs going forward will not be adequately met by a GO Council consumed with building these from scratch.</p>
CGR2/GOP/92	Eastington Parish Council	Resident	Yes	I wish to stay within Eastington Parish Council and NOT be amalgamated with the proposed new Great Oldbury Parish.
CGR2/GOP/93	Eastington Parish Council	Resident	Yes	As a resident of Westend I wish to remain with Eastington Parish Council and not amalgamate with the new proposed Great Oldbury Parish Council which should remain separate.

STONEHOUSE TOWN COUNCIL

Question – Do you support the draft recommendations including the boundary amendments to move your address from Stonehouse Town Council to Great Oldbury Parish Council?

Reference	Parish/Town Council	Connection to Parish/Town Council	Do you agree with the draft recs?	Comments
CGR2/GOP/41	Stonehouse Town Council	Resident	Yes	No comments
CGR/GOP/42	Stonehouse Town Council	Resident	Yes	This is a new area in effect with all new housing development. So a new parish is a good idea. I hope it will allow people to meet and discuss developments that matter to them.
CGR/GOP/43	Stonehouse Town Council	Resident	Yes	<p>We feel Great Oldbury is a big enough settlement to warrant its own parish, where it is split at the moment it seems to be 2 communities (eastington and Stonehouse) instead of one parish community.</p> <p>Having our own parish councillors will be a bonus as they will be local and able to get hold of about current problems affairs etc</p> <p>We have no clue who is our parish councillor at the moment.</p>
CGR/GOP/44	Stonehouse Town Council	Resident	Yes	<p>As Great Oldbury already has a strong community spirit and hosts Great Oldbury community meetings to discuss local matters and action things to happen, I believe having our own parish will help us to continue the great foundations we have started as a community.</p> <p>Personally, I will be volunteering for a place on the parish committee in the hope of election.</p>

CGR/GOP/45	Stonehouse Town Council	Resident	Yes	I am happy to move parish but not if it is going to increase the amount of council tax we pay!
CGR/GOP/46	Stonehouse Town Council	Resident	Yes	I am hope that as we become a separate parish we will be helped financially to get the facilities that these new houses with families, need.
CGR/GOP/47	Stonehouse Town Council	Resident	Yes	Great Oldbury should be a distinct parish in its own right – not divided between Stonehouse and Eastington. It is a brand new community with little resemblance to either Stonehouse Town or Eastington Parish.
CGR/GOP/48	Stonehouse Town Council	Resident	Yes	As a community we relate more closely to Great Oldbury, and our needs are different from those of Stonehouse.
CGR/GOP/49	Stonehouse Town Council	Resident	Yes	

Online responses to question - Do you agree with the draft recommendations for the parish(es) you have selected to comment on?

Reference	Parish/Town Council	Connection to the Parish/Town Council	Do you agree with the draft recs?	Comments
CGR2/GOP/98	Stonehouse Town Council (BOTH)	Parish/Town clerk	Yes	Stonehouse Town Council supports the proposed recommendation of establishing a new Parish of Great Oldbury. Stonehouse Town Council supports the proposed recommendation that the ward boundaries of the Town of Stonehouse are redrawn to create three wards, North, Central and South Wards and that the allocation of Councillors is redistributed across the wards with an allocation of 6 Councillors for North Ward, 4 Councillors for South Ward and 4 Councillors for Central Ward.

CAM PARISH COUNCIL

Reference	Parish/Town Council	Connection to the Parish/Town Council	Do you agree with the draft recs?	Comments
CGR2/82	Cam Parish Council	Parish/Town councillor	No	There should be a Cam North ward. However, it should go further than the proposals of Cam Parish Council and extend up to the boundary of the M4 so as to include part of the new Wisloe development.
CGR2/97	Cam Parish Council	Parish/Town Clerk	In part	Disappointed with the outcome for Cam but would appreciate the opportunity to review in 4 years as recommended

Appendix C
Agenda Item 12

DURSLEY TOWN COUNCIL

Reference	Parish/Town Council	Connection to the Parish/Town Council	Do you agree with the draft recs?	Comments
CGR2/83		Parish/Town clerk	Yes	I am happy for the Council to remain at 17 councillors and would not support any attempt to reduce to 16 in the future.
CGR2/84		Parish/Town councillor	Yes	I agree with the recommendation to keep the amount of Town Councillors the same because I do feel it is proportionate to the size of Dursley and the fact that it is a busy town with a lot going on. I find the suggestions in relation to Littlecombe interesting and would be interested in having a discussion about this further down the line once the development is finished and the Town Council has taken over the care for the area.

FRAMPTON-ON-SEVERN PARISH COUNCIL

Reference	Parish/Town Council	Connection to the Parish/Town Council	Do you agree with the draft recs?	Comments
CGR/101	Frampton on Severn Parish Council	Parish/Town clerk	Yes	No comments

HORSLEY PARISH COUNCIL

Reference	Parish/Town Council	Connection to the Parish/Town Council	Do you agree with the draft recs?	Comments
CGR/102	Horsley Parish Council	Parish/Town clerk	Yes	No comments

HUNTS GROVE PARISH COUNCIL

Reference	Parish/Town Council	Connection to the Parish/Town Council	Do you agree with the draft recs?	Comments
CGR/103	Hunts Grove Parish Council	Hunts Grove Parish Council	Yes	Hunts Grove Parish Council supports the recommendation for an increase to 9 councillors but requests that this be reviewed after 2 years. The original request was for an increase to 11 councillors and the amount of services the council expects to be managing in 2 years time would need additional members to share the workload.

MINCHINHAMPTON COUNCIL

Reference	Parish/Town Council	Connection to the Parish/Town Council	Do you agree with the draft recs?	Comments
CGR2/85	Brimscombe & Thrupp Parish Council	Parish Clerk of neighbouring parish	Yes	I am submitting this response on behalf of Brimscombe and Thrupp Parish Council. The Parish Council agreed the following response at the full Council meeting on 14th March 2023 (minute reference 8.10): "Brimscombe and Thrupp Parish Council agree with the recommendations set out that "A Community Governance Review for Minchinhampton and Brimscombe and Thrupp should take place before the local elections in 2028"

NAILSWORTH TOWN COUNCIL

Reference	Parish/Town Council	Connection to the Parish/Town Council	Do you agree with the draft recs?	Comments
CGR2/94	Nailsworth Town Council	Parish/Town Clerk	Yes	No comments

Appendix C
Agenda Item 12

STANDISH PARISH COUNCIL

Reference	Parish/Town Council	Connection to the Parish/Town Council	Do you agree with the draft recs?	Comments
CGR/114	Standish Parish Council	Parish Town Clerk	No	<p>The Community Governance Review proposes that Great Oldbury will have its own Parish Council , to be elected in May 2024, However, it proposes that the employment site which is part of the Great Oldbury development should remain within Standish parish, on the grounds that this will avoid unnecessary alteration of parish boundaries. Standish Parish Council strongly disputes the logic of this, especially as other parish boundaries will need to be changed to establish the new parish. In the Council’s view, the employment site is an integral part of the Great Oldbury development and should become part of the new parish along with the residential development. It has no shared identity with Standish.</p> <p>Standish Parish Council supports the proposal that the councillor allocation for Standish should remain at 6 (NB the allocation increased to 6 at the last CGR. It is not 5 as stated in the first para of 2.9).</p> <p>Standish Parish Council supports the proposal that decisions about PS19a should be left until such time as it is possible to consult with residents of the proposed development, together with existing residents of Standish parish.</p>

Page 272

WOODCHESTER PARISH COUNCIL

Reference	Parish/Town Council	Connection to the Parish/Town Council	Do you agree with the draft recs?	Comments
CGR2/111	Woodchester Parish Council	Parish/Town Clerk	No	<p>As per our telephone conversation, I was surprised to see no request from Woodchester Parish Council while I was reading through the draft recommendations.</p> <p>Woodchester Parish Council discussed the review and following the resignation of a councillor, have recognised that a group of six councillors functions very well for the Parish. The existing council members feel that the council performs better as a functioning body of six members and proposed that the elected number be reduced from seven to six.</p> <p>It appears that these comments didn't submit successfully via the portal, therefore could the comments please be considered at the next meeting?</p>

**Community Governance Review
Form for Submission of Comments**

Parish boundary amendment between Eastington Parish Council and Stonehouse Town Council to create the new 'Great Oldbury Parish Council'.

1. What is your name? *You must provide an answer to this question.*

[Redacted]

2. What is your address? *You must provide an answer to this question.*

[Redacted]

3. Please give an e-mail address or telephone number so we can contact you if needed. *This information is optional but, if provided will not be made publicly available, and will only be used if we need to contact you regarding the review.*

Email: [Redacted]

Telephone: [Redacted]

4. Do you support the draft recommendations including the boundary amendment to move your address from Eastington Parish Council to Great Oldbury Parish Council?

Yes

No

5. Please use the space below to submit comments in support of your view(s)

Please see attached

As a new community I completely and enthusiastically support the formation of "Great Oldbury Parish Council".

I object to the proposed boundary. The boundary, in my opinion, should follow the current boundaries with Standish Parish, Stonehouse Town Council, Whitminster Parish and Frampton-On-Severn Parish with a dividing boundary with Eastington Parish following the line of the canal (existing and proposed).

My reasons are:

1. Residents of the Nastend, Westend and Nupend hamlets will be isolated from Eastington Parish and should be given the democratic choice of which Parish they wish to reside.
2. New developments, housing and industrial, in and around Great Oldbury will affect residents of Nupend, Westend and Nastend and these residents should have a voice on the Great Oldbury Parish Council.
3. Although there is no vehicular access directly into the Great Oldbury from the neighbouring hamlets, there is a network of paths and bridleways which will be heavily used by walkers and cyclists. There will be issues and conflicts between old and new residents which can only be resolved in the same Parish Council.
4. The retail development around the Shell Service station on the A419 called **Great Oldbury Service Station** should be part of Great Oldbury Parish, as any further development on the site will affect Great Oldbury residents much more than residents of adjacent parishes. (It is ironic that an area called Great Oldbury Service Station should not be included in the Great Oldbury parish).
5. Further development will inevitably take place north of the Great Oldbury Service Station and either side of Grove Lane. (Current proposals are already planned in the neighbouring parish of Whitminster for 2000 new homes). The expertise of Great Oldbury Parish Council in dealing with developers will be of great benefit to current and proposed residents, as well as residents of the hamlets of Westend and Nupend. Note: There is a case that Great Oldbury Parish Council should extend into Whitminster Parish Council, to the A38, and should be discussed.
6. The proposed Eco Park and building of Forest Green Rovers new stadium is welcomed by most Great Oldbury residents, unlike the opposition expressed to the "West of Stonehouse" proposals by Eastington Parish Council and Stonehouse Town Council, over recent years. Only a Great Oldbury Parish Council can protect the interests of local residents and ensure that locals reap the benefits of development, in negotiations.
7. The same reasoning can be applied to anticipated development of the Stroudwater Canal, which I believe should form the southern border of Great Oldbury Parish. The rewards and benefits of developments around the canal will

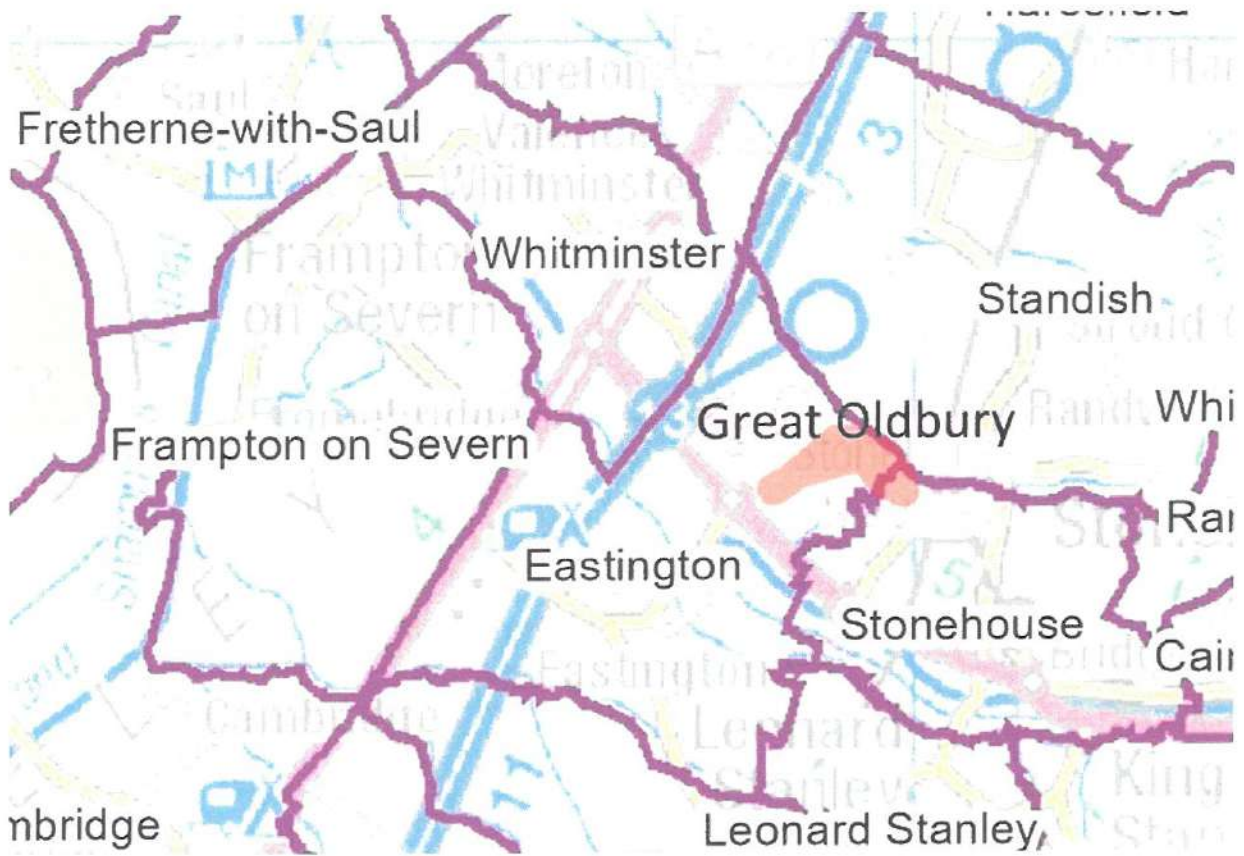
be of far more interest and concern to Great Oldbury residents than residents of neighbouring parishes. As a growing community, Great Oldbury Parish Council will benefit from increasing funds, from a very healthy Annual Precept, to further assist the improvements of facilities in the surrounding area.

8. Using the Stroudwater Canal as the southern boundary of Great Oldbury Parish Council will also give Great Oldbury Parish Council the rights to comment on issues and problems caused by the A419, something that I believe will become an important subject of concern in the future.
9. Finally, the “ghettoization” of Great Oldbury, by drawing a tight line around the current housing development is, I believe, lazy democracy and an attempt to avoid detailed discussion that should take place regarding the creation of a new Parish Council. (The first new parish council in the Stroud area for many years). It is also depriving the surrounding hamlets and landowners the benefits of a Parish Council that will have previously dealt with housing and industrial developers and have the funds to make a difference. The current issues around “Stroudwater 13” and the noisy “cheese-factory” could have been anticipated and prevented by an established and efficient Great Oldbury Parish Council.

The two maps below highlight, in graphic form, the ridiculous nature of the proposal suggested in the Governance Review.



Suggested (this document) boundary of Great Oldbury Parish Council.



Proposed "Governance Review" boundary of Great Oldbury Parish Council.

Appendix C

6. Do you want to be kept informed of the progress of the community governance review and the final recommendations when they are published?

If so, please choose your preferred method below. If you do want to be kept informed please ensure you have provided the relevant contact details in response to Question 3. If you do not want to be kept informed, please select 'I do not want to be kept informed'.

Email

Phone

I do not wish to be kept informed

7. Your information

The personal details that you provide in this survey will be held in accordance with the Data Protection Act 2018 and shall be used for the purpose of intending to collect local resident's views about how well they think their parish/town council works and any information that you provide in this survey will be used for the purpose of this review.

The review will last 12 months, during which, the information that you provide will be shared with the Community Governance Review working Members Group and Stroud District Council Officers, which include Electoral Services and the Chief Executive of the Council.

All responses to the review must be published, however all personal details will be excluded upon publication.

The information you provide shall be kept until the review has been completed and the recommendations implemented in May 2024, after which time your information will be destroyed.

For further information about how your personal data is processed, please see sections 1-10 and section 13.5 of the Council's privacy notice for details affecting Electoral Services at www.stroud.gov.uk.

I consent to my personal information being used for the purposes outlined above.

Yes

No

Please return this form in the enclosed envelope to, Electoral Services, Stroud District Council, Ebley Mill, Ebley Wharf, Stroud, Glos, GL5 4UB

Or as a scanned document by email to – elections@stroud.gov.uk

The closing date for submissions is **Wednesday 26 April 2023**



5/5

Equality Analysis Form

By completing this form you will provide evidence of how your service is helping to meet Stroud District Council's General Equality duty:

The Equality Act 2010 states that:

*A public authority must, in the exercise of its functions, have **due regard** to the need to:*

- (a) eliminate discrimination, harassment, victimisation and any other conduct that is prohibited by the Equality Act 2010;*
- (b) advance equality of opportunity between persons who share a relevant protected characteristic and persons who do not share it;*
- (c) foster good relations between persons who share a relevant protected characteristic and persons who do not share it.*

The protected characteristics are listed in Question 9

Stroud District Equality data can be found at: <https://www.stroud.gov.uk/council-and-democracy/corporate-plans-and-policies/equality-diversity-and-inclusion/equality-impact-assessments>

1. Persons responsible for this assessment:

Name(s): Jenna Malpass	Telephone: 01453 754886
	E-Mail: jenna.malpass@stroud.gov.uk
Service: Corporate Policy & Governance	Date of Assessment: 03/07/23

2. Name of the policy, service, strategy, procedure or function:

Community Governance Review – Final Recommendations

Is this new or an existing one? New / Existing

3. Briefly describe its aims and objectives

Community governance reviews provide the opportunity for principal councils to review and make changes to community governance within their area. Such reviews are often, although not exclusively, in circumstances such as where there have been changes in population, or in reaction to governance issues. A community governance review offers an opportunity to put in place strong, clearly defined boundaries and helps to ensure that community governance within the areas under review reflect the identities and interests of the community in that area and is effective and convenient.

A number of changes have been recommended as part of the Community Governance Review including the increase in the number of Councillors for Hunts Grove Parish Council, creation of Great Oldbury Parish Council and the amendment of Ward Boundaries for Stonehouse Town Council.

4. **Are there external considerations? (Legislation / government directive, etc)**

The process of conducting a community governance review is governed by statute. The legislative framework for community governance reviews is set out in the Local Government and Public Involvement in Health Act 2007 ('the 2007 Act'). Under the terms of the 2007 Act, the Council must have regard to guidance issued by the Secretary of State about undertaking community governance reviews.

The Local Government and Public Involvement in Health Act 2007 requires the council to ensure that community governance within the area under review will be:

- reflective of the identities and interests of the community in that area, and
- effective and convenient.

Relevant considerations which should influence the Council's judgement against these two principal criteria include the impact on community cohesion and the size, population and boundaries of the proposed area

This review is being undertaken following a decision by Council during the CGR held in 2019 to carry out a further CGR between 2022 and 2023.

The Council is required to consult with local government electors for the area under review and any other person or body which appears to have an interest in the review.

5. **Who is intended to benefit from it and in what way?**

Residents of the Parishes included as part of the CGR are those directly affected by the impact of the potential changes to Governance. The increase in the number of Councillors and creation of Great Oldbury Parish Council will provide greater representation for those within the Parish areas.

6. **What outcomes are expected?**

If the final recommendations are accepted by Council a number of changes for the Parishes included as part of the review will take effect.

7. **What evidence has been used for this assessment?: (eg Research, previous consultations, Inform (MAIDEN); Google assessments carried out by other Authorities)**

Desk based research was carried out, looking at how Community Governance Reviews are carried out by other local authorities. We looked at the style and tone used in their promotional material and the number of responses each consultation received. There was no evidence that the review or its outcomes would have a disproportionate impact, either positive or negative, on people with protected characteristics.

8. **Has any consultation been carried out? See list of possible consultees**

The council is required to consult local government electors in the area under review, and others who appear to have an interest in the review. When undertaking a review they must have regard to the need to ensure that the community governance reflects the identities and interests of the community in the area under review, and the need to ensure that community governance in that area is effective and convenient.

Phase 1 of the public consultation of the community governance review opened on 31

October 2022 and ran for over 12 weeks until 29 January 2023. The council chose a long initial consultation period to enable a broad range of views to be gathered.

The second stage, phase 2 consultation, putting forward the council's draft recommendations after considering findings from phase 1, started on 1st March 2023 and closed on the 26 April 2023. This second phase consultation was designed to gather views and gauge the level of support for the council's draft recommendations. A broad range of communication methods were used to inform people about the consultation.

The consultation was published on the Council's website and promoted through its social media channels. A press release was issued and hard copy consultation documents were sent to residents where the recommendation was to create a new Parish Council. The council also contact local voluntary and community groups in the area and asked that Parish and Town Councils included in the review also promoted the consultation directly with their residents and interested parties.

- 9. Could a particular group be affected differently in either a negative or positive way? (Negative – it could disadvantage and therefore potentially not meet the General Equality duty; Positive – it could benefit and help meet the General Equality duty; Neutral – neither positive nor negative impact / Not sure)**

Protected Group	Type of impact, reason and any evidence (from Q7 & 8)
Age	<p>Neutral</p> <p>The parishes represent all their residents so there is no specific age group impacted.</p> <p>There will be no negative impact on any particular age group as a result of the Community Governance Review.</p> <p>Only those of voting age (18 years and over) will be able to take part in elections in line with current legislation, although the councils will represent the whole population of their area (including young and older people). In addition to be eligible to stand for election the person must be 18 or over on the day of nomination</p> <p>Changes to governance arrangements could help to ensure that Parish Councils better reflect the population of the area it represents.</p>
Disability	<p>Neutral</p> <p>There will be no impact on anyone with a disability as a result of the Community Governance Review. Public engagement and consultation for the Review was carried out using a wide variety of methods to ensure everyone has access to the same information and equal opportunities to engage and respond including the following:</p> <ul style="list-style-type: none"> • Information as well as being online was published on social media and by Parish and Town Councils included in the review. • The consultation was available to respond to online, by phone, by post, by email and in person.

Appendix D	Changes to governance arrangements could help to ensure that Parish Councils better reflect the population of the area it represents.
Gender Re-assignment	Neutral The Community Governance Review will have no specific impact.
Pregnancy & Maternity	Neutral The Community Governance Review will have no specific impact
Race	Neutral The Community Governance Review will have no specific impact.
Religion – Belief	Neutral The Community Governance Review will have no specific impact
Sex	Neutral The Community Governance Review will have no specific impact
Sexual Orientation	Neutral The Community Governance Review will have no specific impact
Marriage & Civil Partnerships (part (a) of duty only)	Neutral The Community Governance Review will have no specific impact
Rural considerations : le Access to services; transport; education; employment; broadband;	Neutral The Community Governance Review will have no specific impact. Stroud is a large rural district with many communities located away from towns and urban centres where information is easier to access. Many rural communities may have limited public transport options or broadband coverage, but there will be a range of consultation methods which should be suitable. Changes to governance arrangements could help to ensure that Parish Councils better reflect the population of the area it represents.

10. If you have identified a negative impact in question 9, what actions have you undertaken or do you plan to undertake to lessen or negate this impact?


Please transfer any actions to your Service Action plan on Excelsis.

Action(s):	Lead officer	Resource	Timescale

Declaration

We are satisfied that an Impact Assessment has been carried out and where a negative impact has been identified, actions have been developed to lessen or negate this impact.

We understand that the Equality Impact Assessment is required by the District Council and that we take responsibility for the completion and quality of this assessment

<p>Completed by: Jenna Malpass</p>	<p>Date: 03/07/23</p>
<p>Role: Senior Democratic Services and Elections Officer</p>	
<p>Countersigned by Head of Service/Director: Hannah Emery, Corporate Policy & Governance Manager</p> 	<p>Date: 10/07/23</p>