

Sustainable Transport Audit - Appendix

Stroud Local Plan Evidence Base
Stroud District Council

29 May 2015

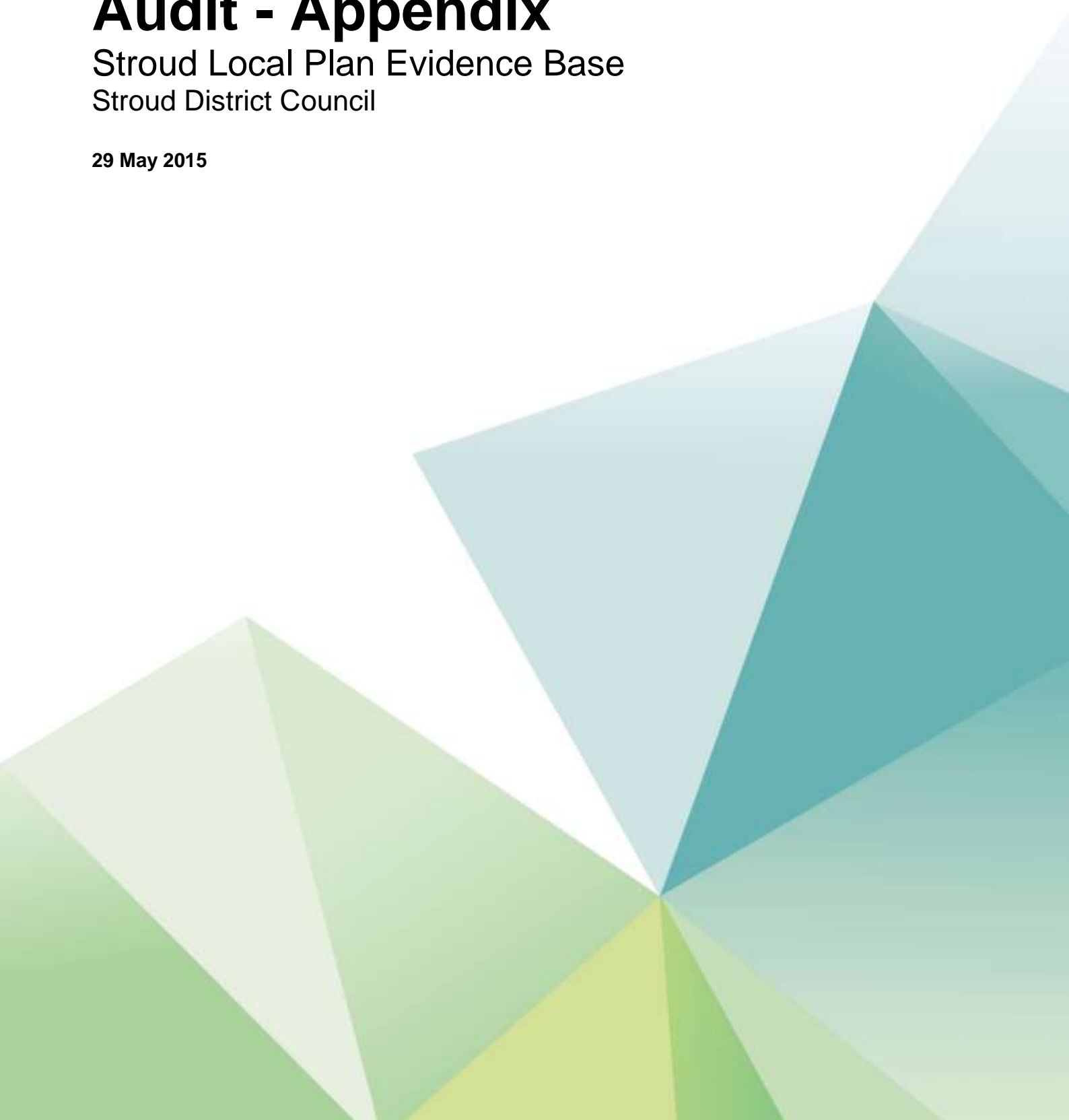


Table of contents

Chapter	Pages
Hunts Grove	3
Quedgeley East	6
North East Cam	9
Sharpness Docks	12
Stroud Valleys	18
Stonehouse	33

Hunts Grove

Figure 4a. Walking Isochrones



Figure 4b. Cycling Isochrones

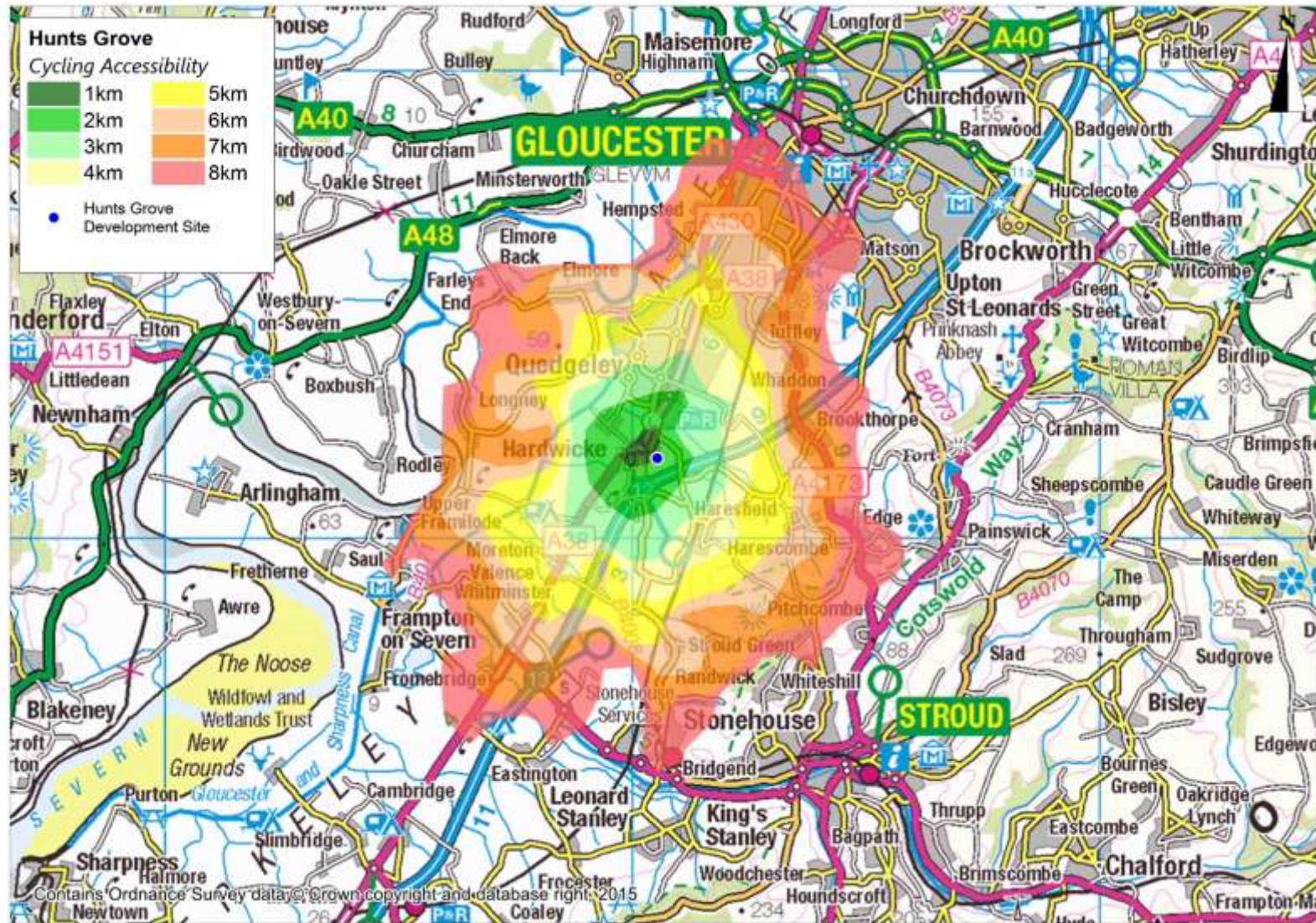
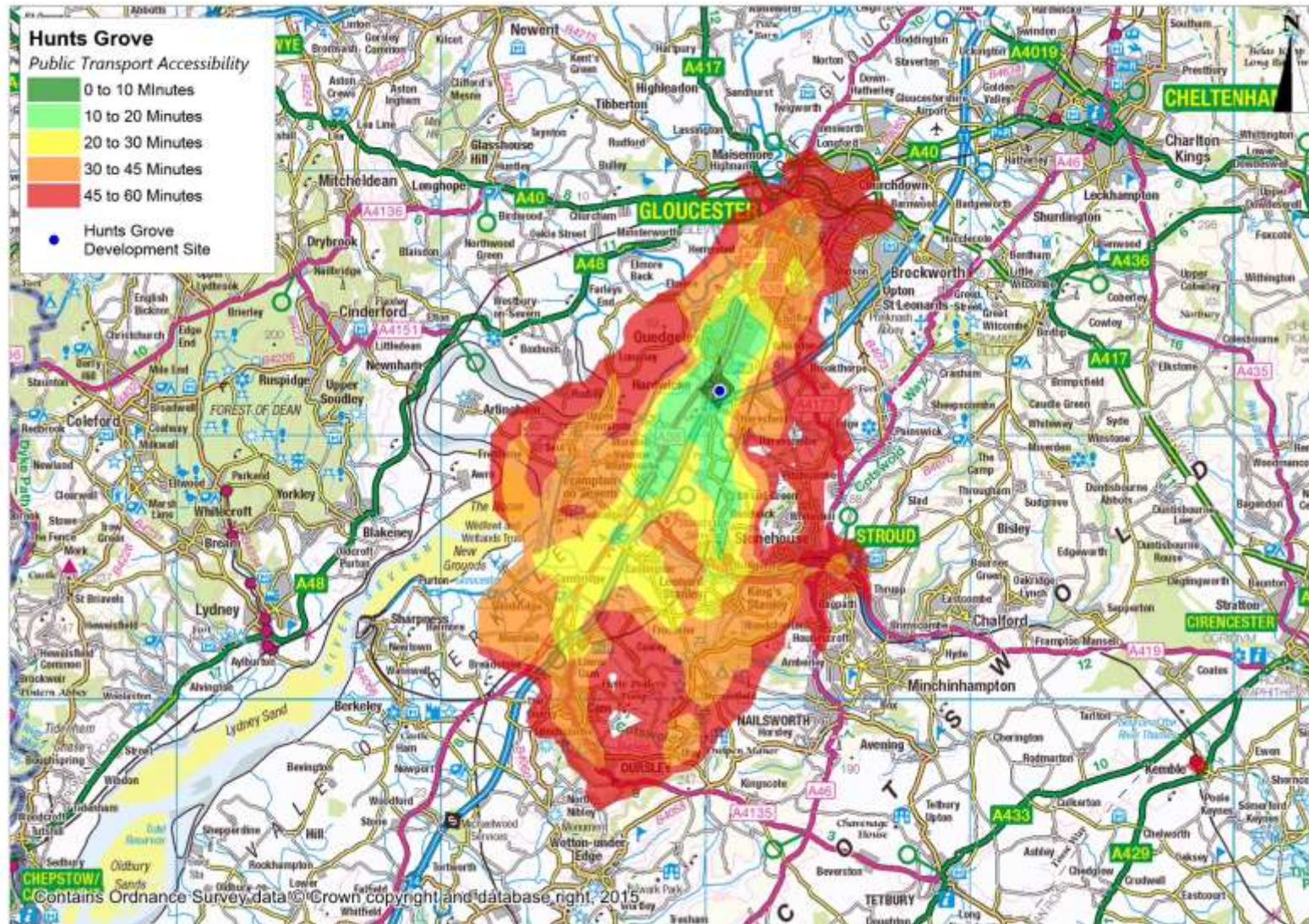


Figure 4c. Public Transport Isochrones



Quedgeley East

Figure 5a. Walking Isochrones

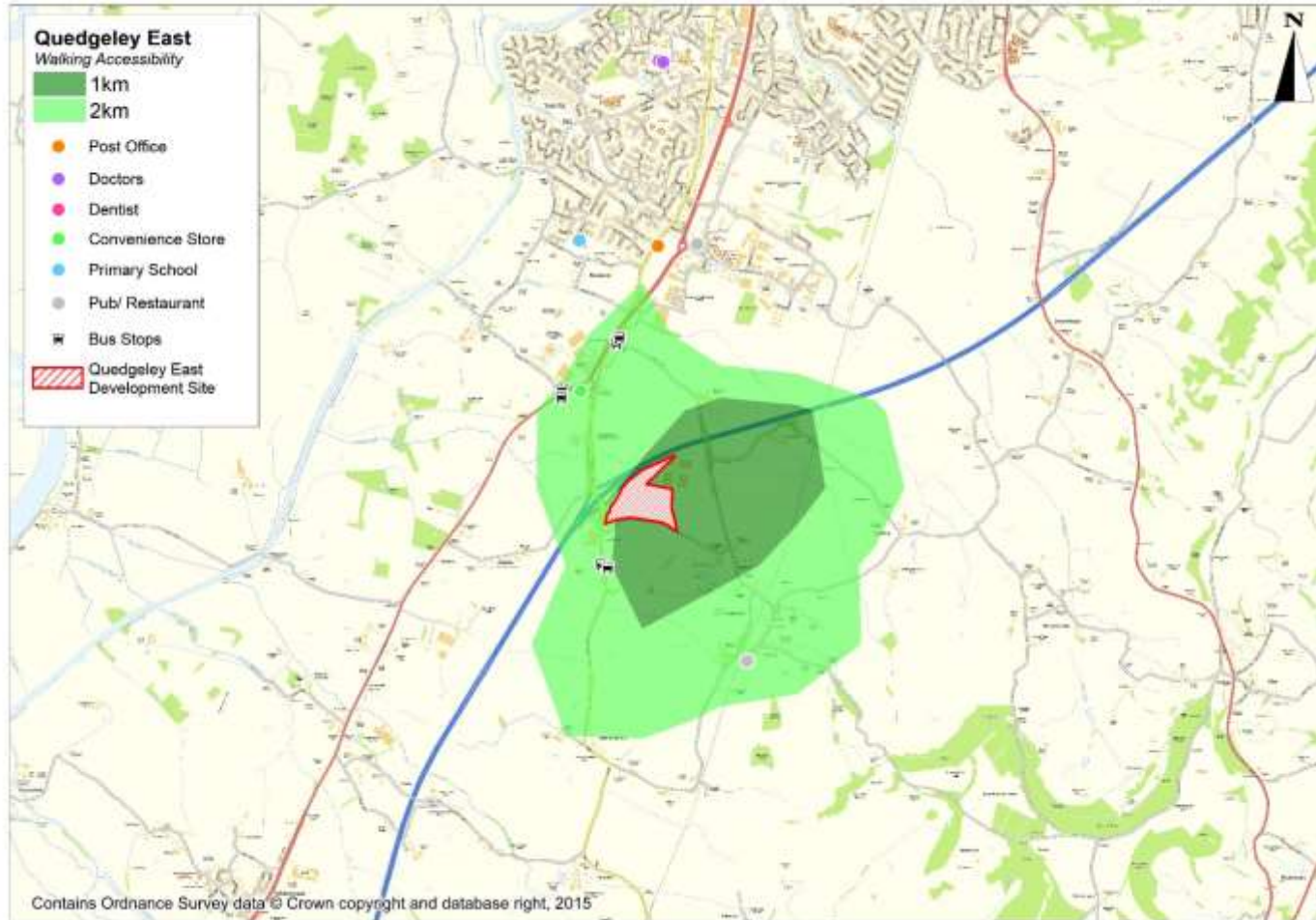


Figure 5b. Cycling Isochrones

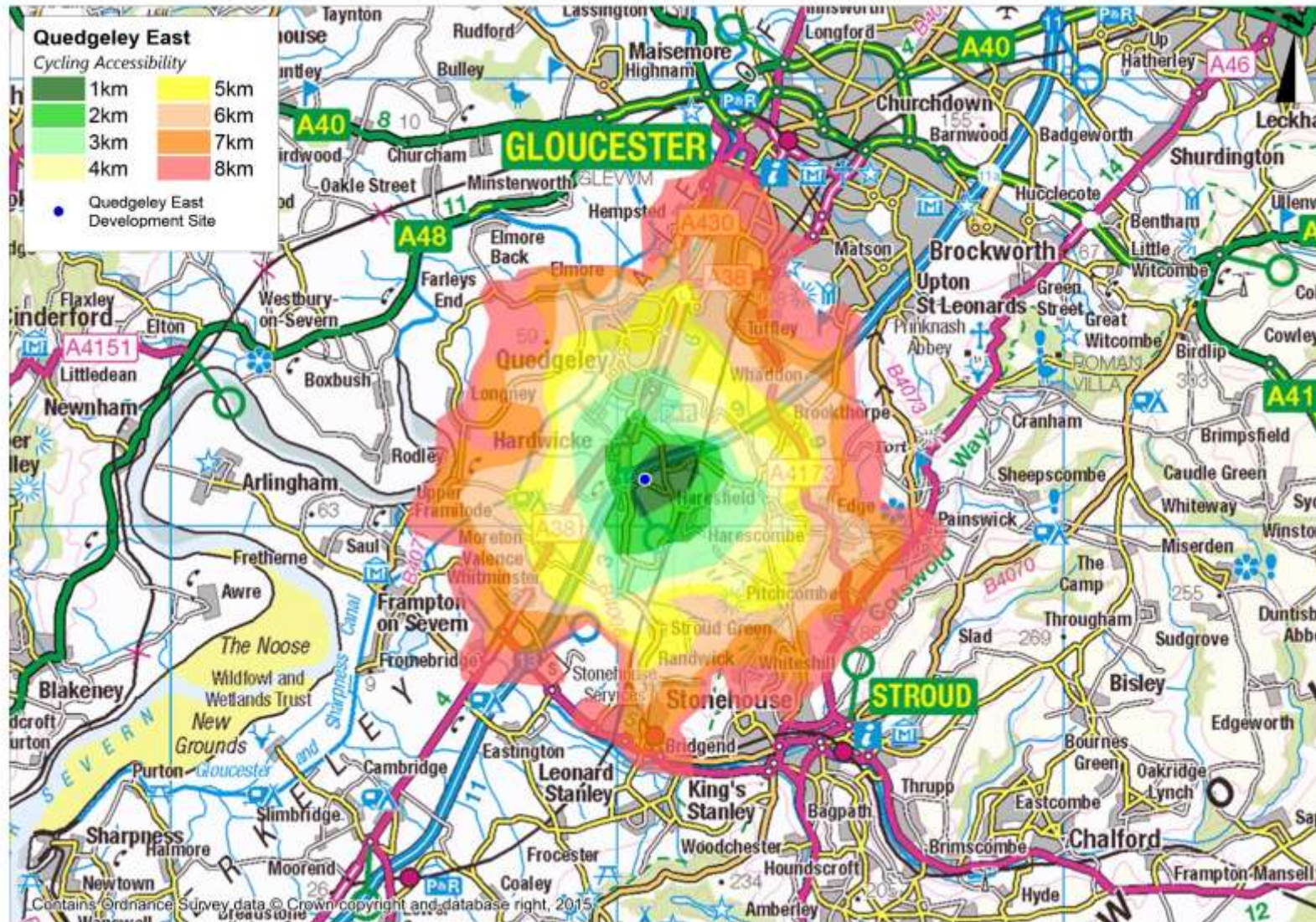
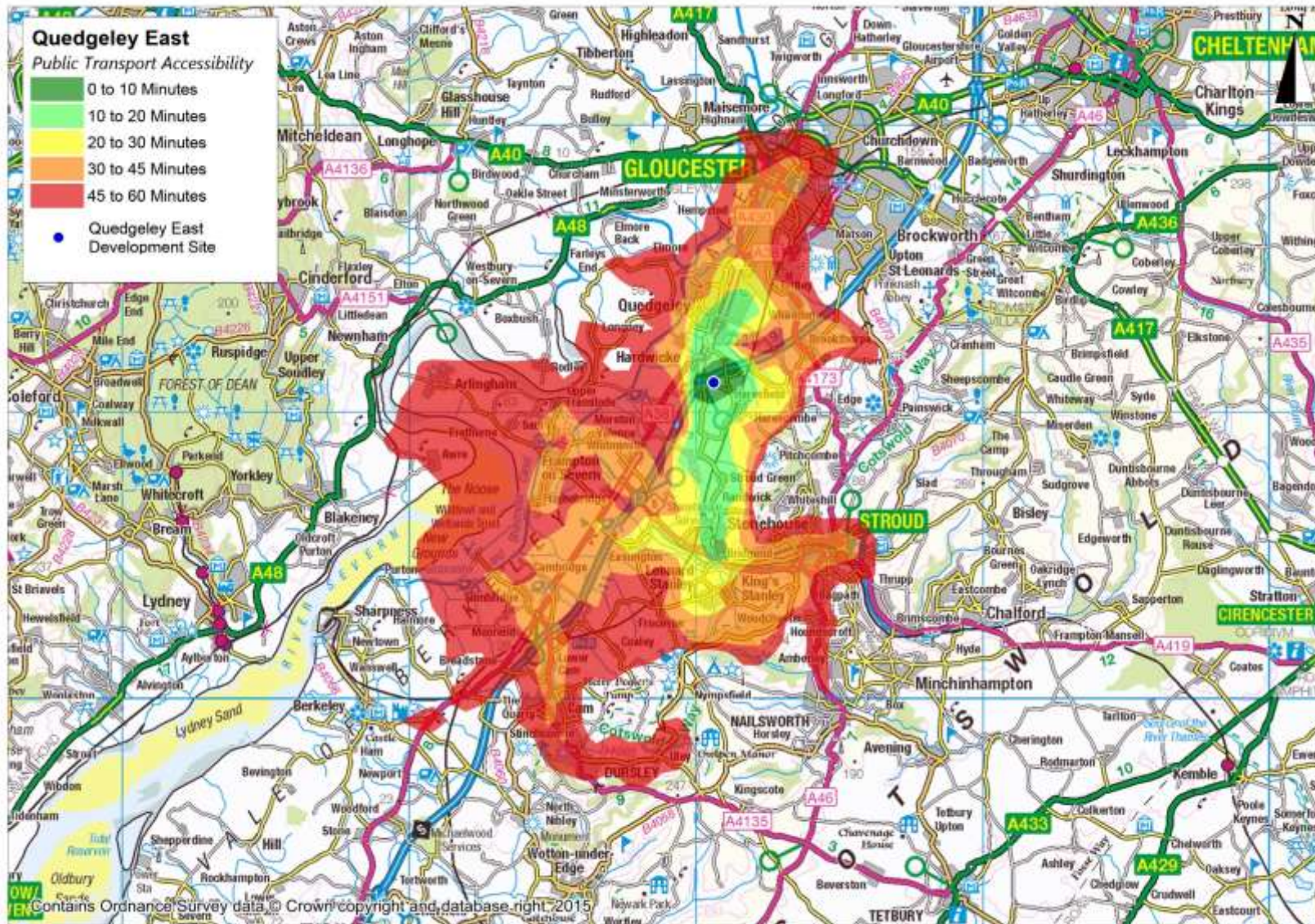


Figure 5c. Public Transport Isochrones



North East Cam

Figure 6a. Walking Isochrones

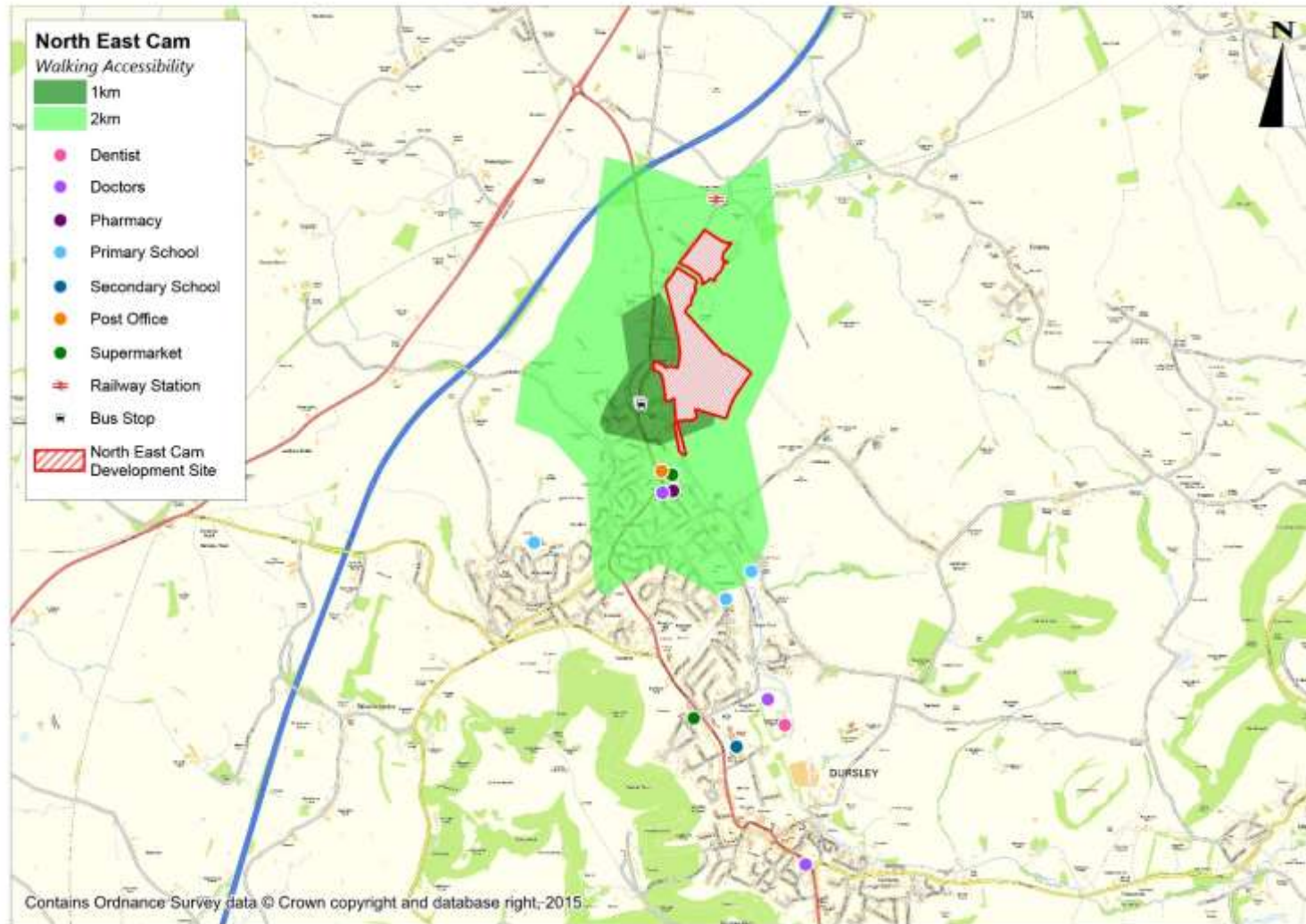


Figure 6b. Cycling Isochrones

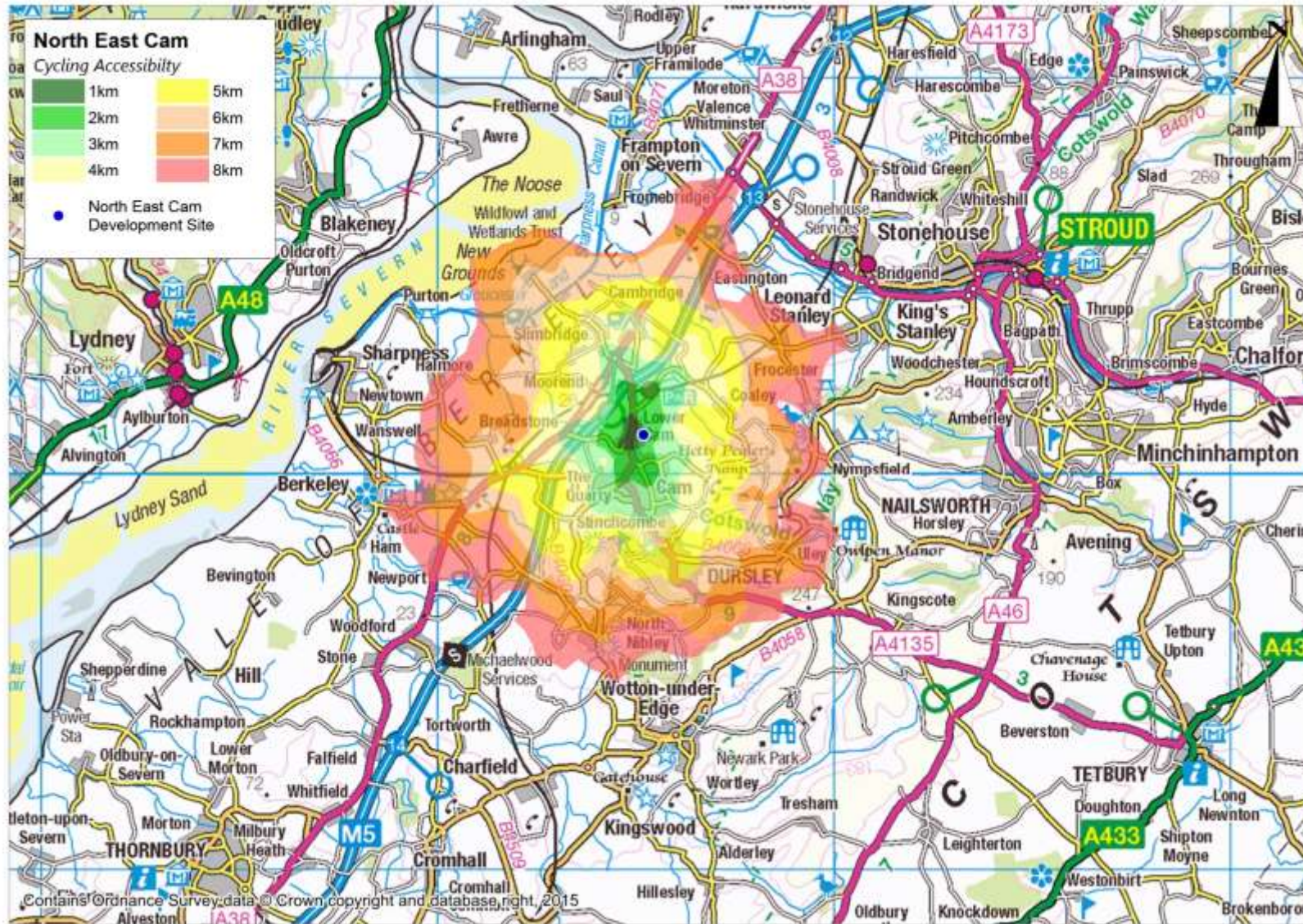
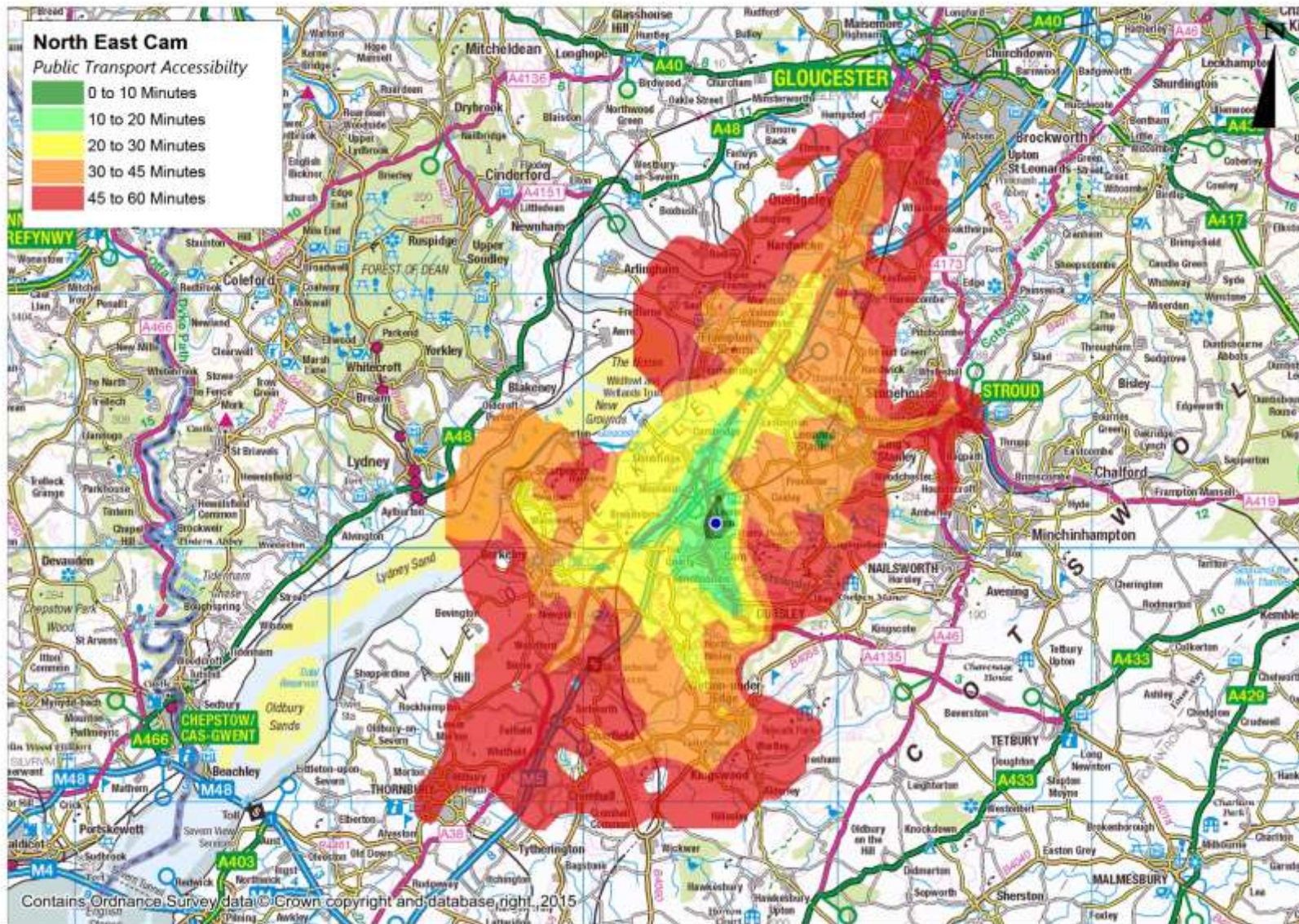


Figure 6c. Public Transport Isochrones



Sharpness Docks

Figure 7a. Walking Isochrones

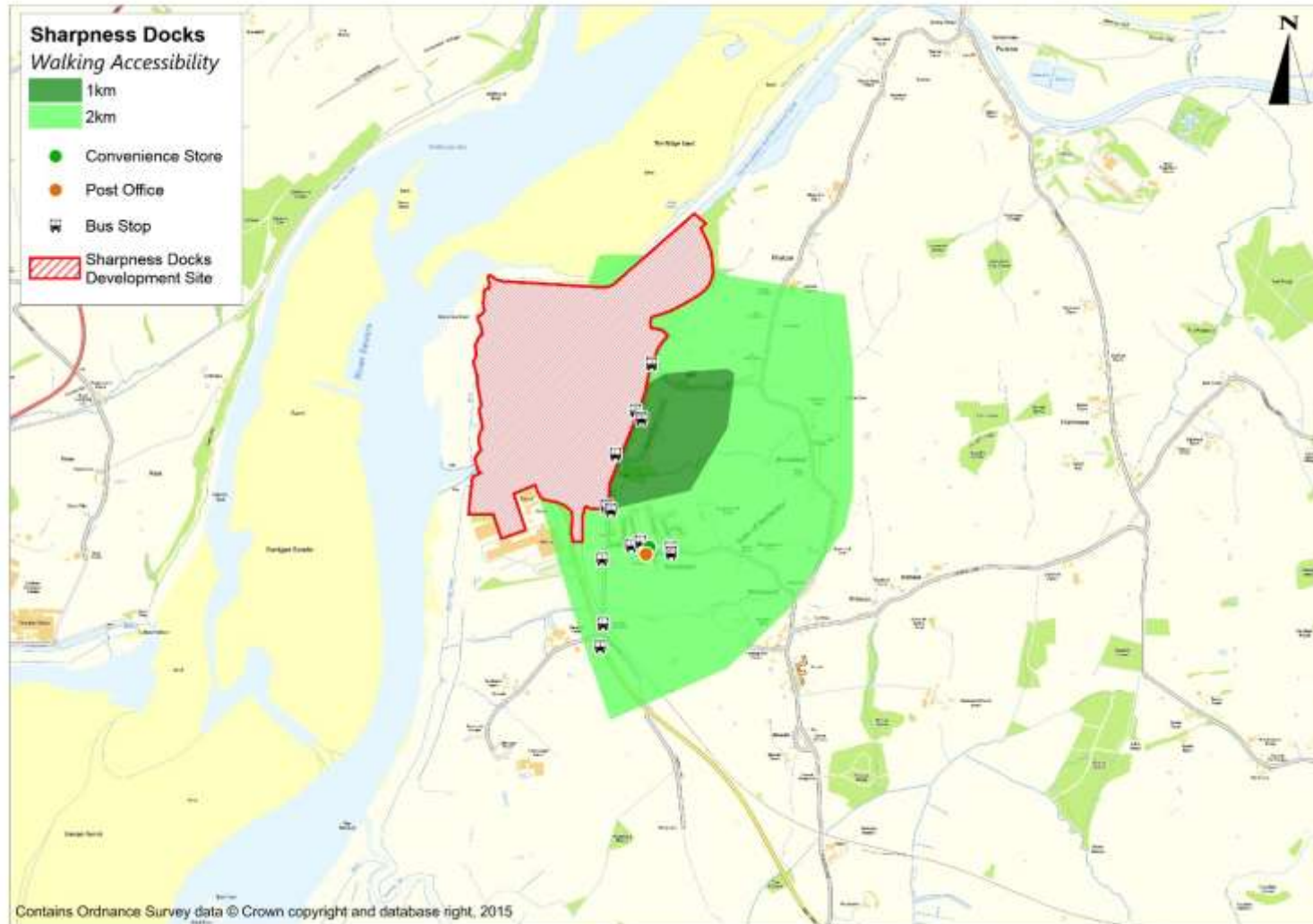
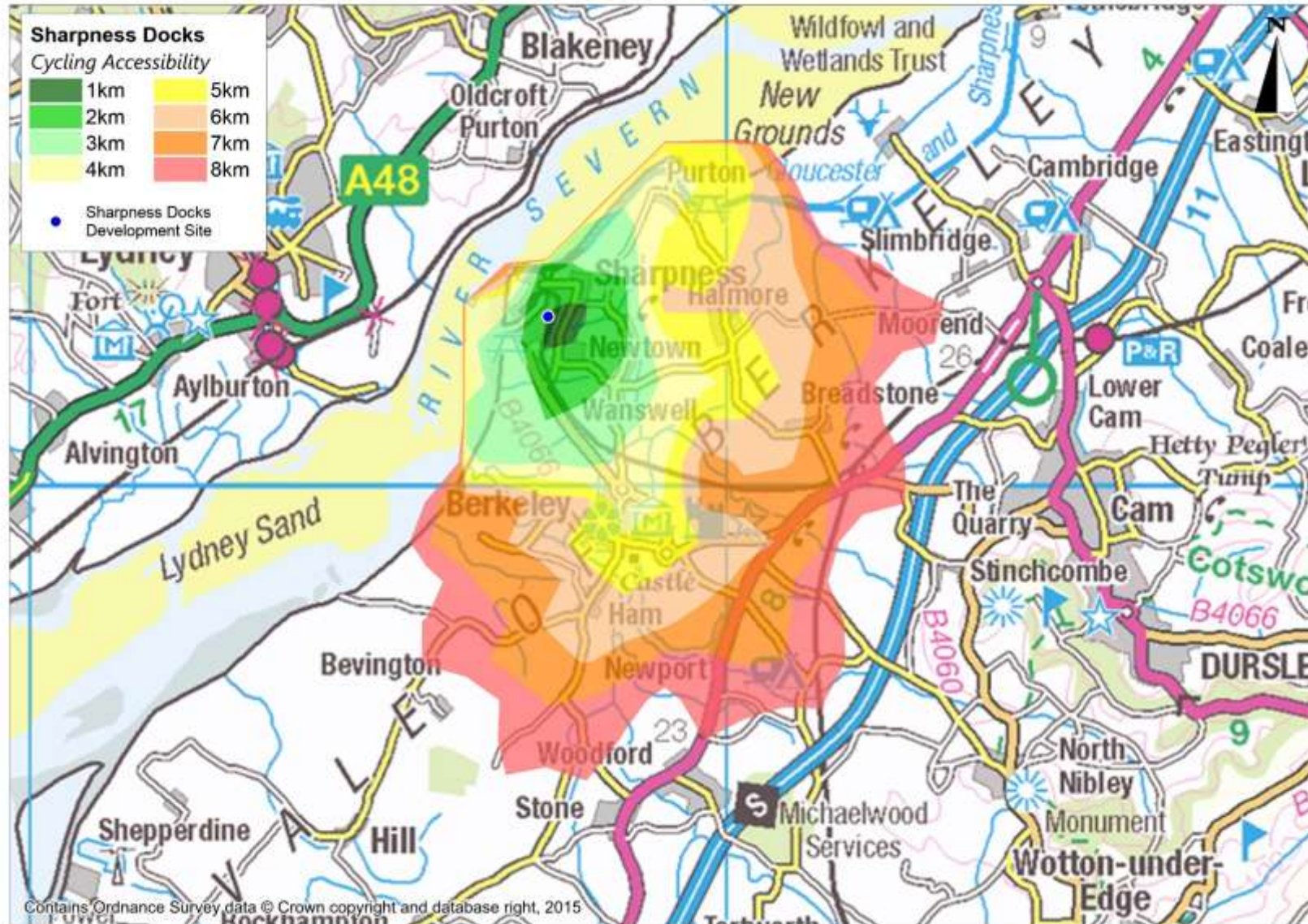




Figure 7b. Cycling Isochrones



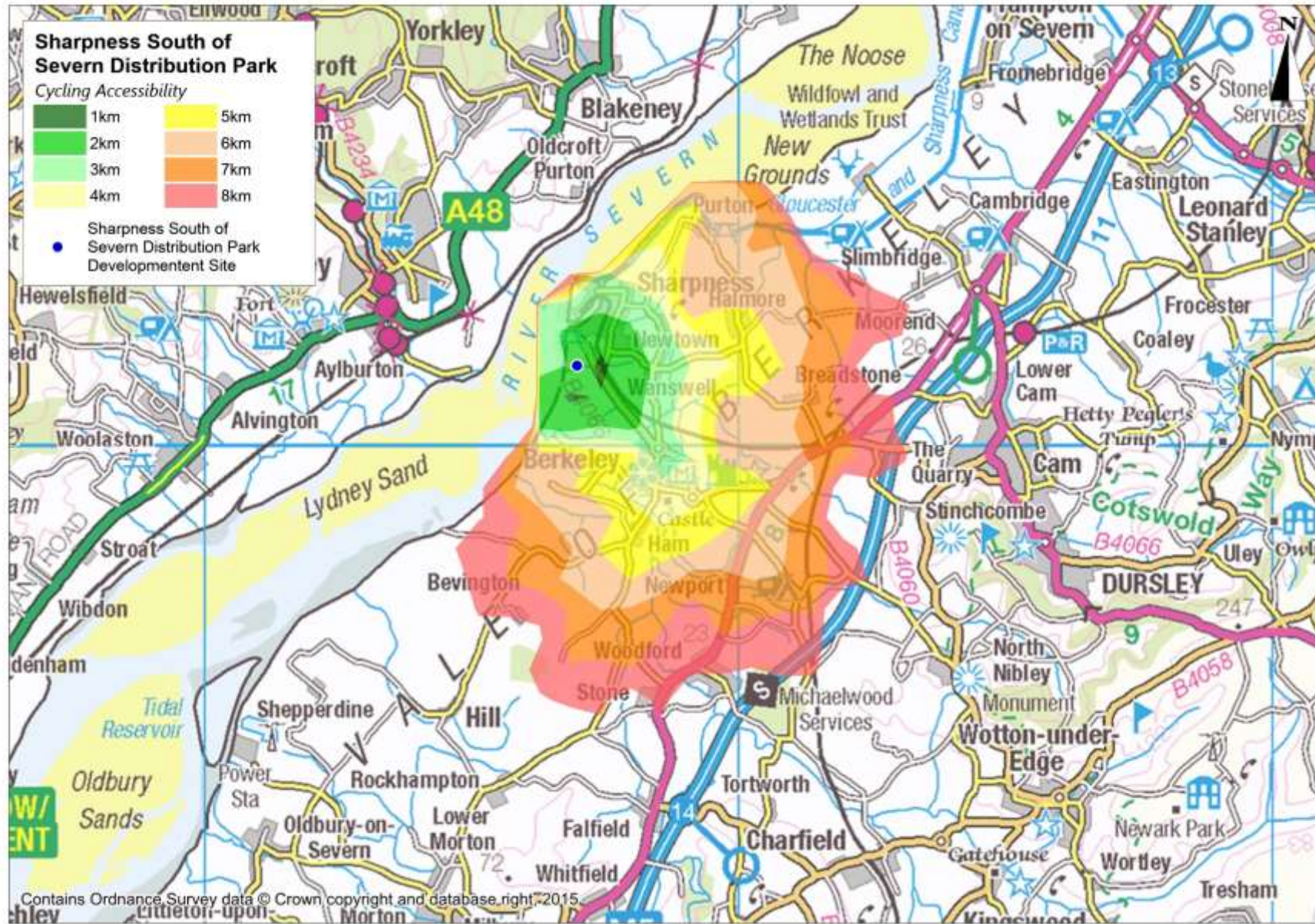
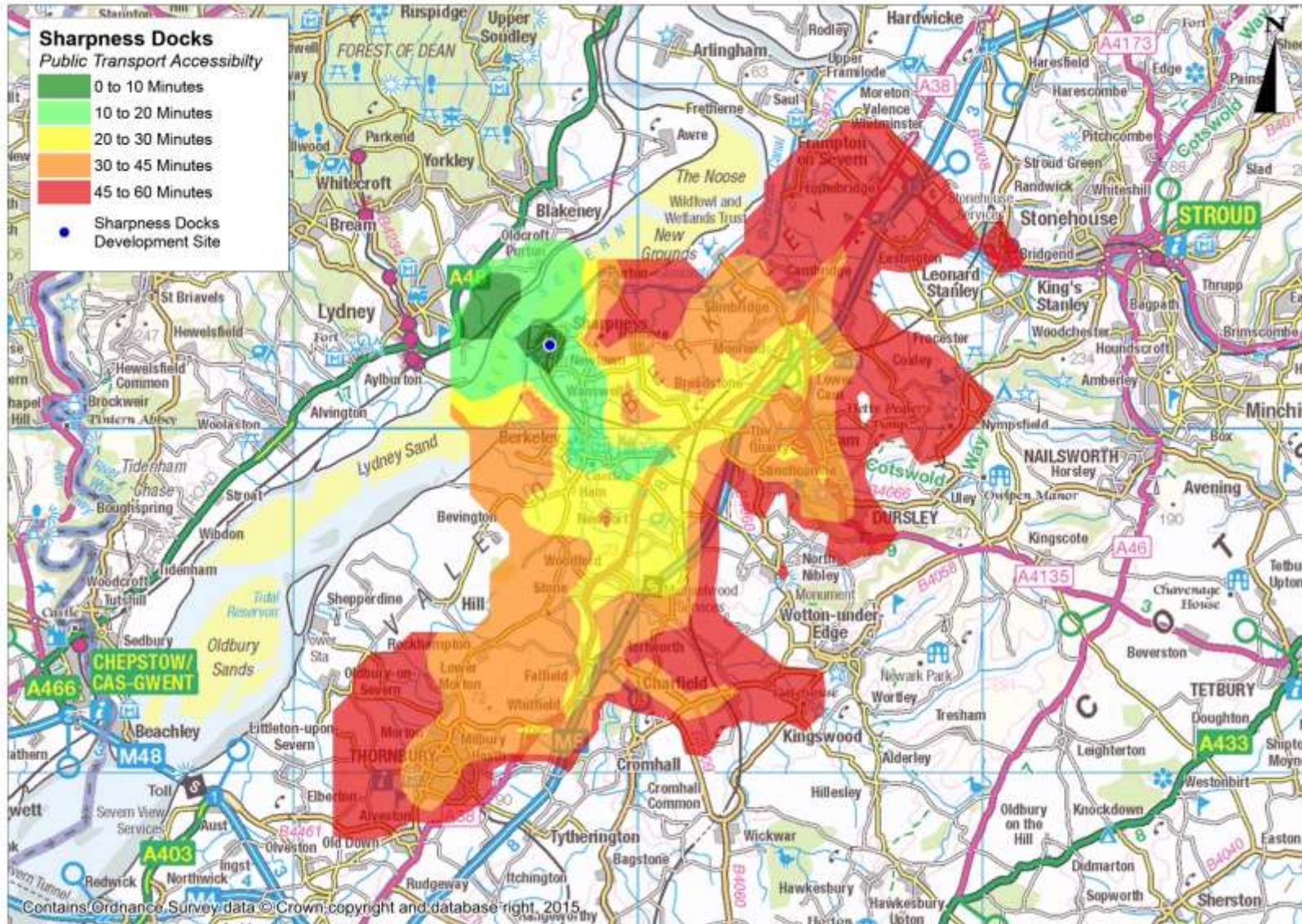
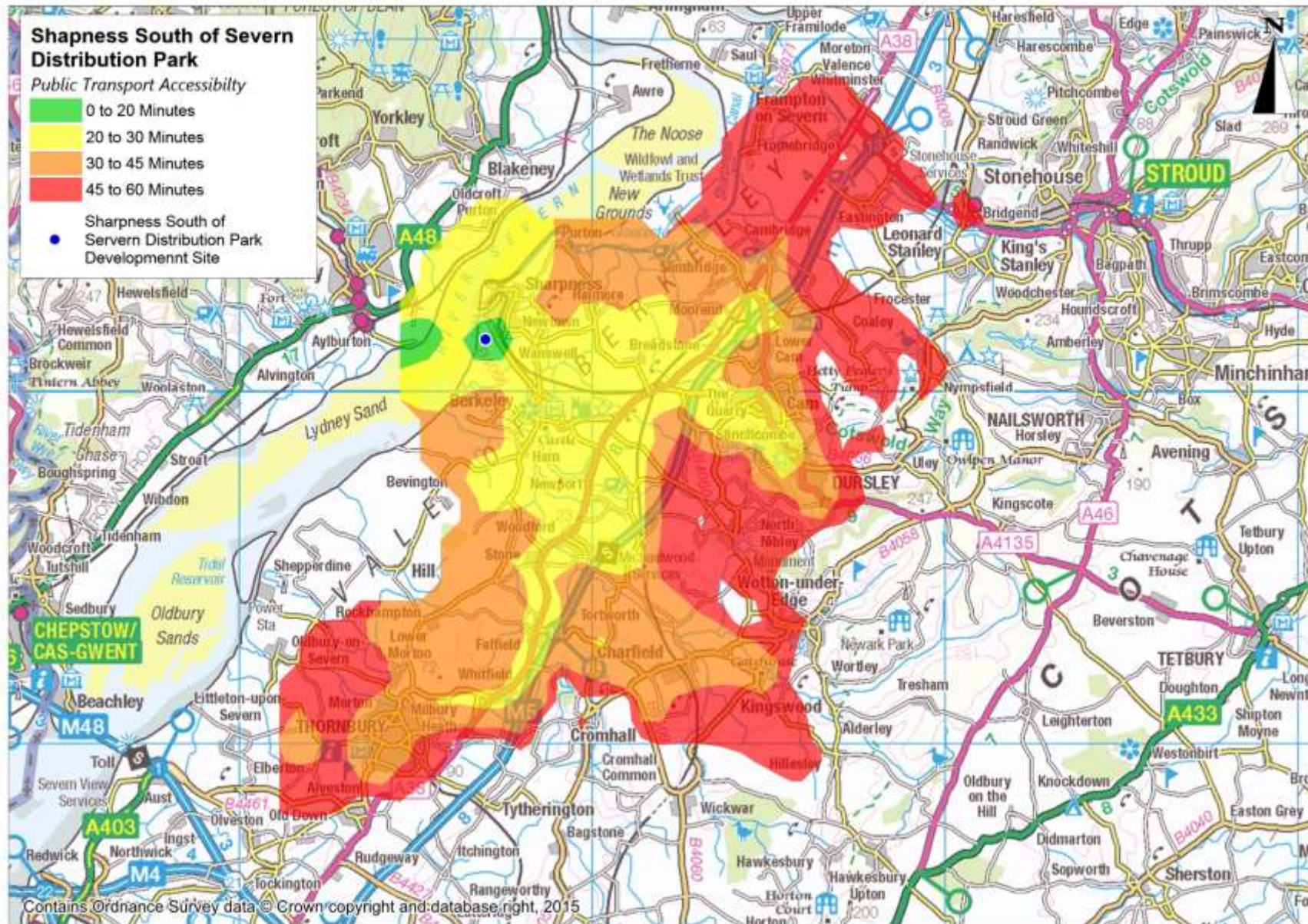


Figure 7c. Public Transport Isochrones





Stroud Valleys

Figure 8.1a. Land at Dudbridge, Walking Isochrones

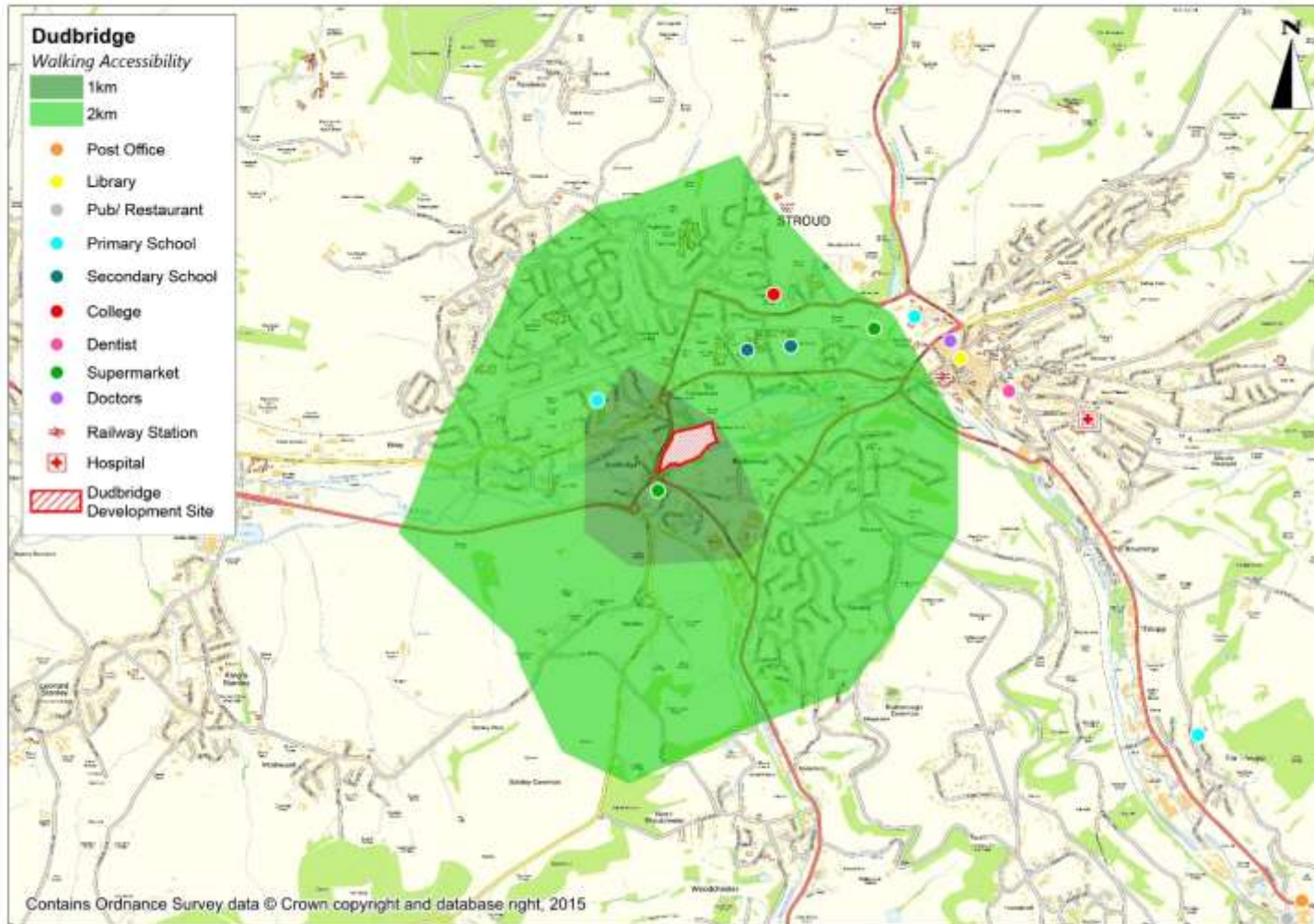


Figure 8.1b. Land at Dudbridge, Cycling Isochrones

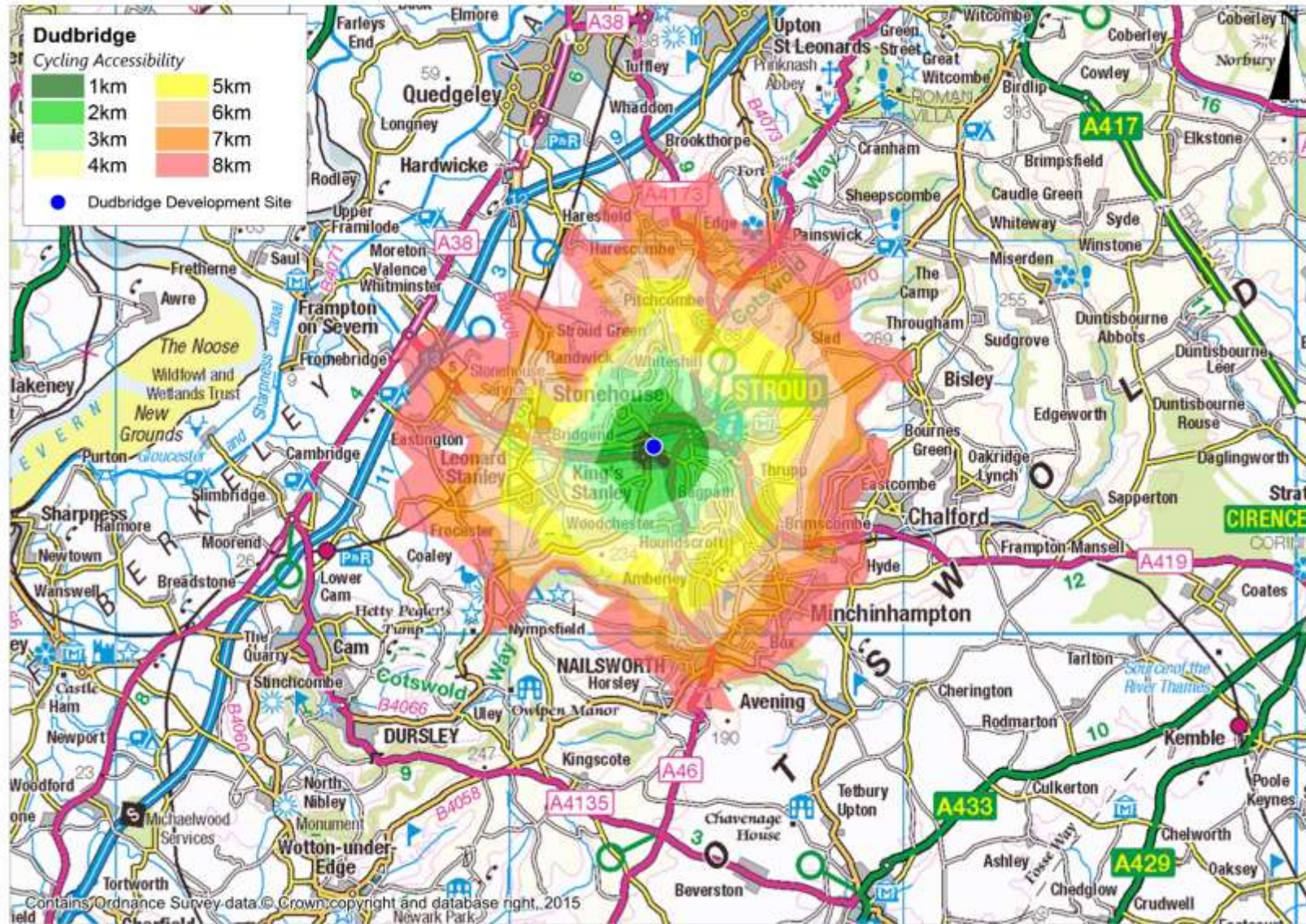


Figure 8.1c. Land at Dudbridge, Public Transport Isochrones

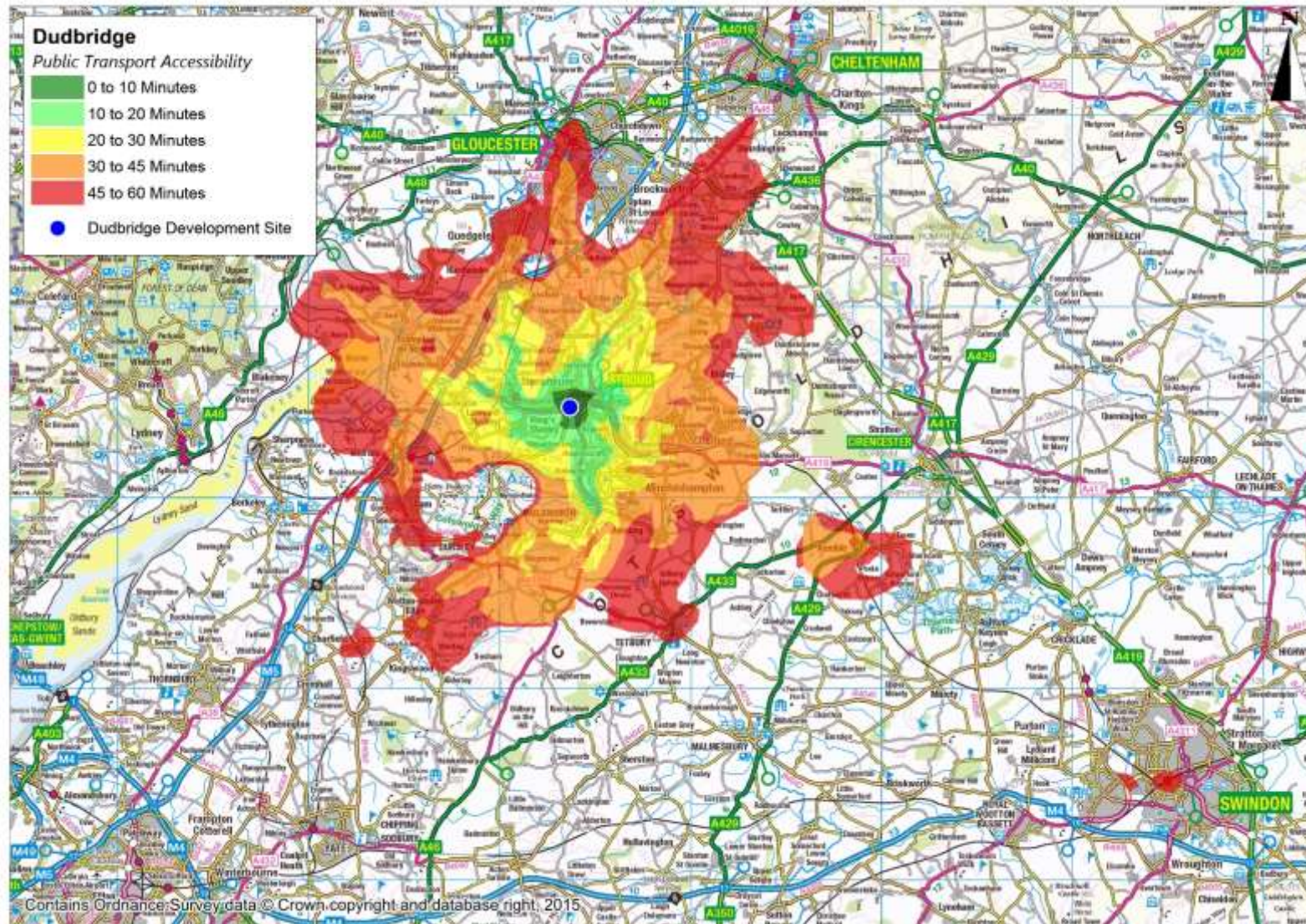


Figure 8.2a. Cheapside, Walking Isochrones

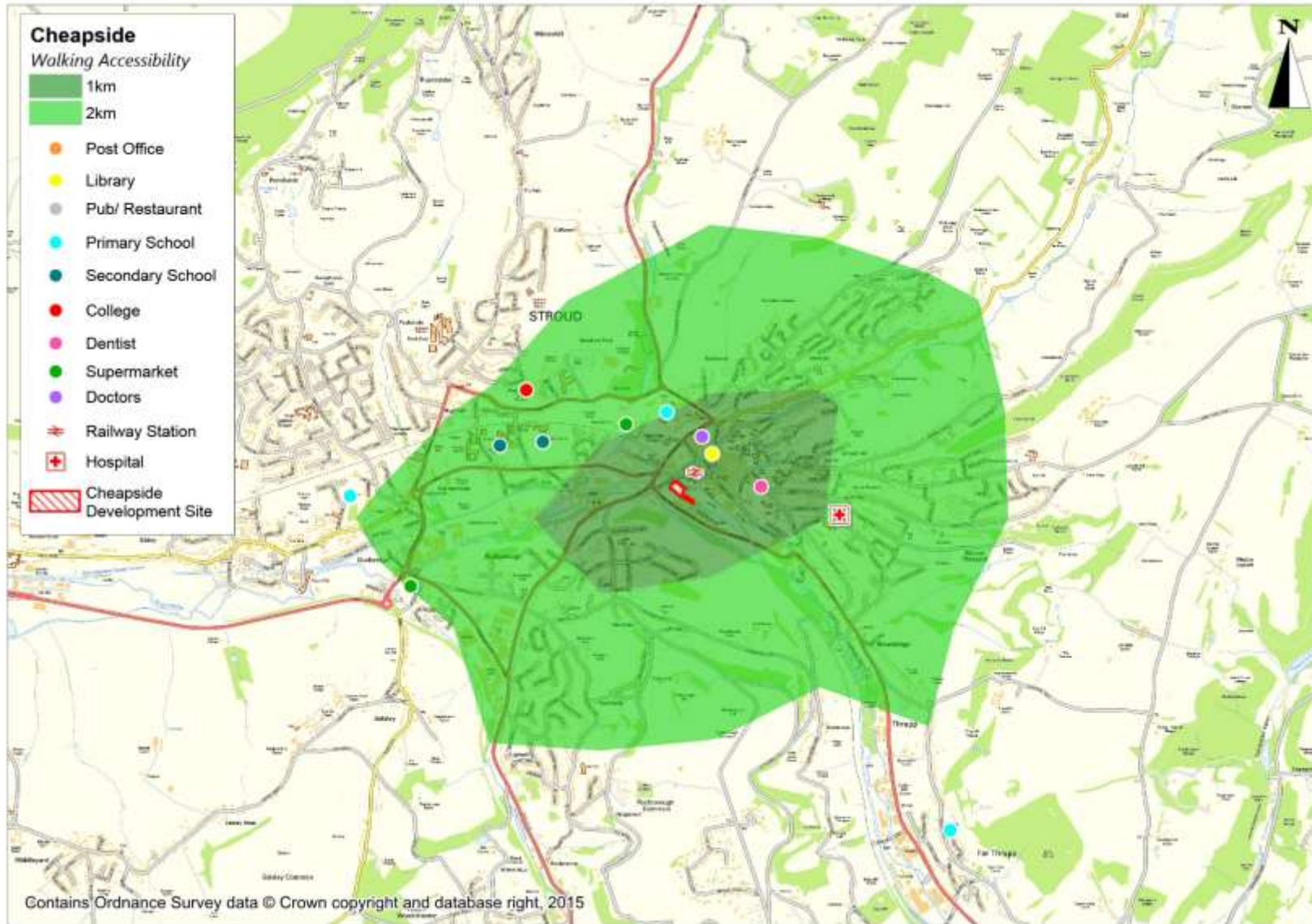


Figure 8.2b. Cheapside, Cycling Isochrones

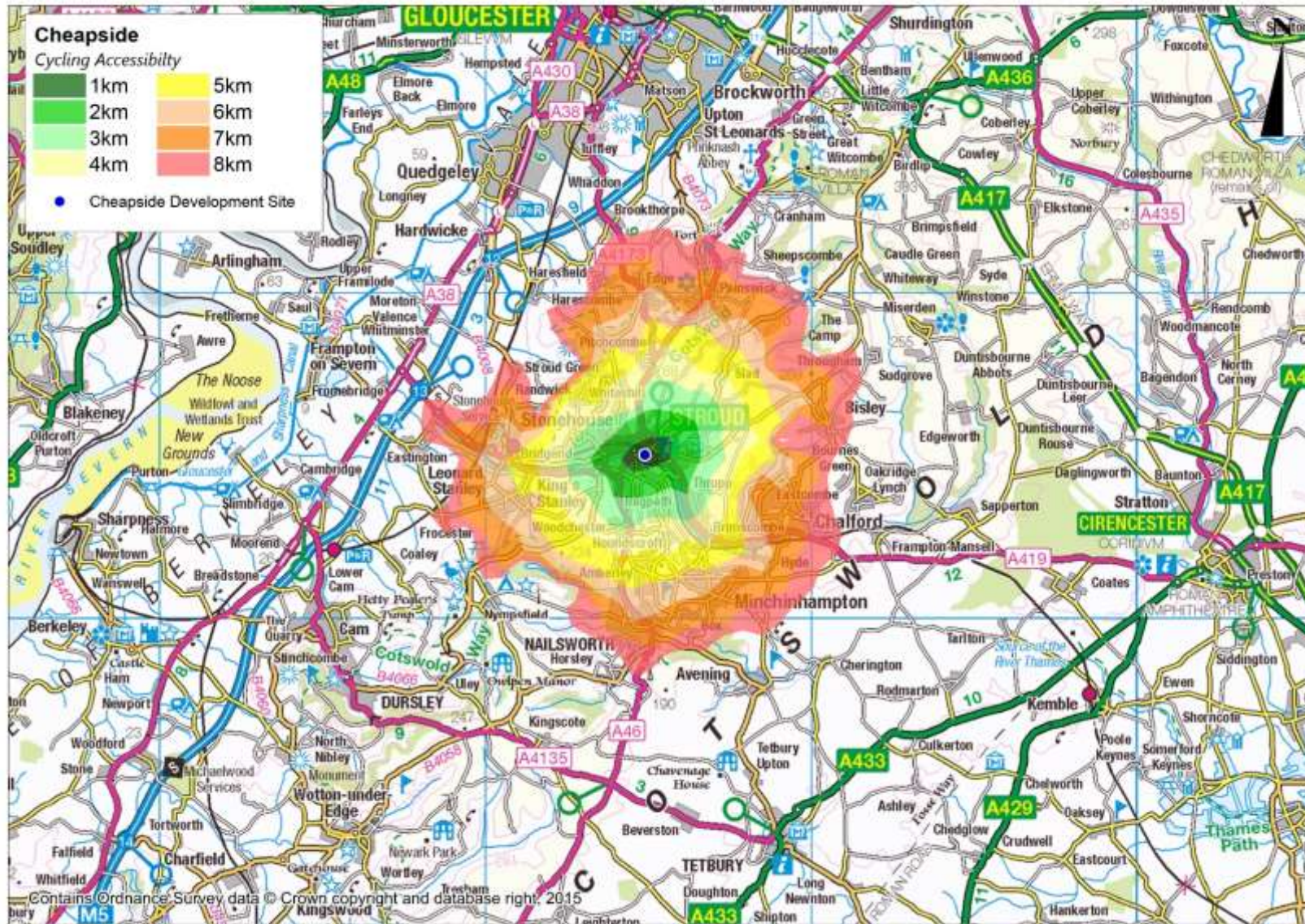


Figure 8.2c. Cheapside, Public Transport Isochrones

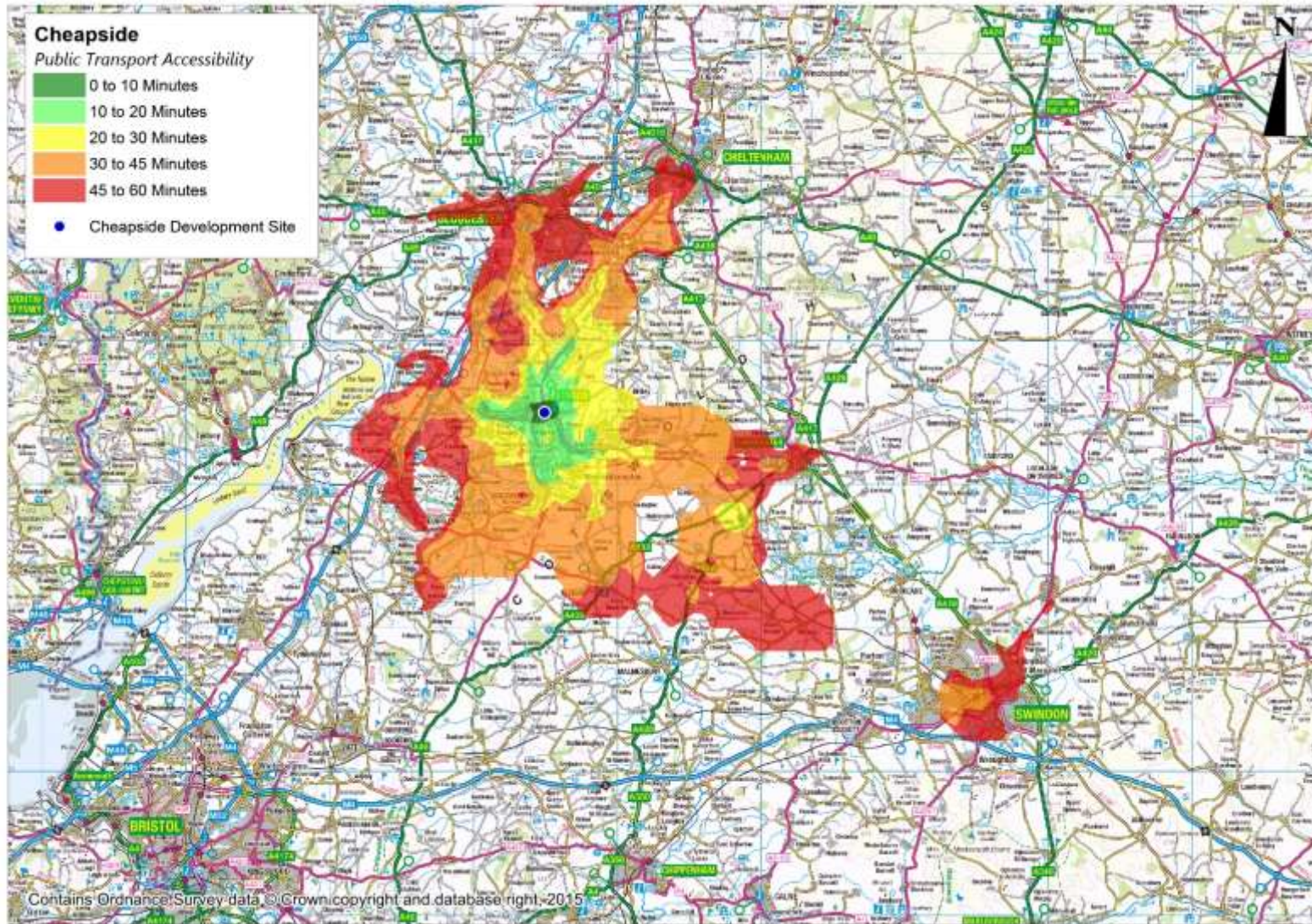


Figure 8.3a. Ham Mill, Walking Isochrones

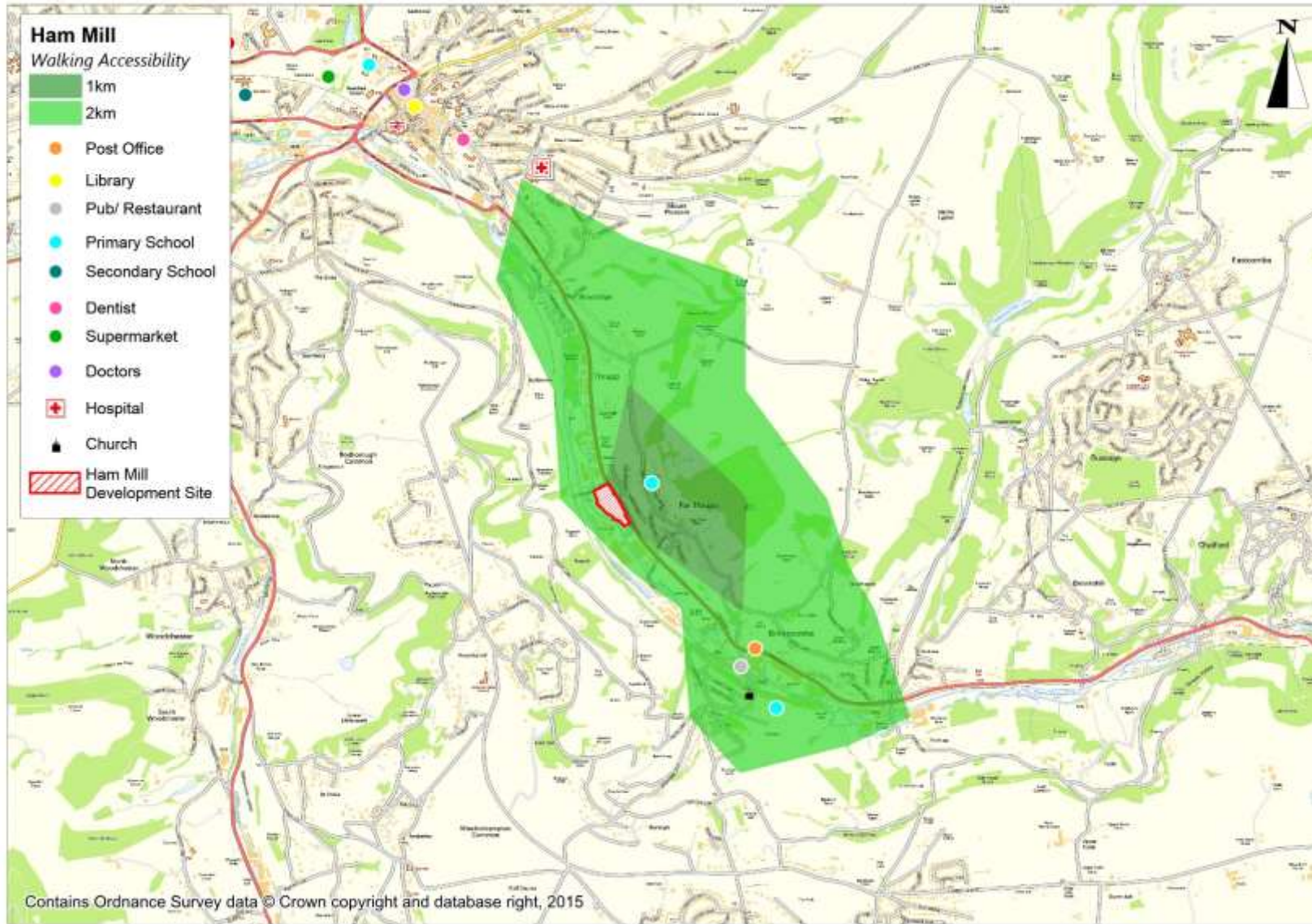


Figure 8.3b. Ham Mill, Cycling Isochrones

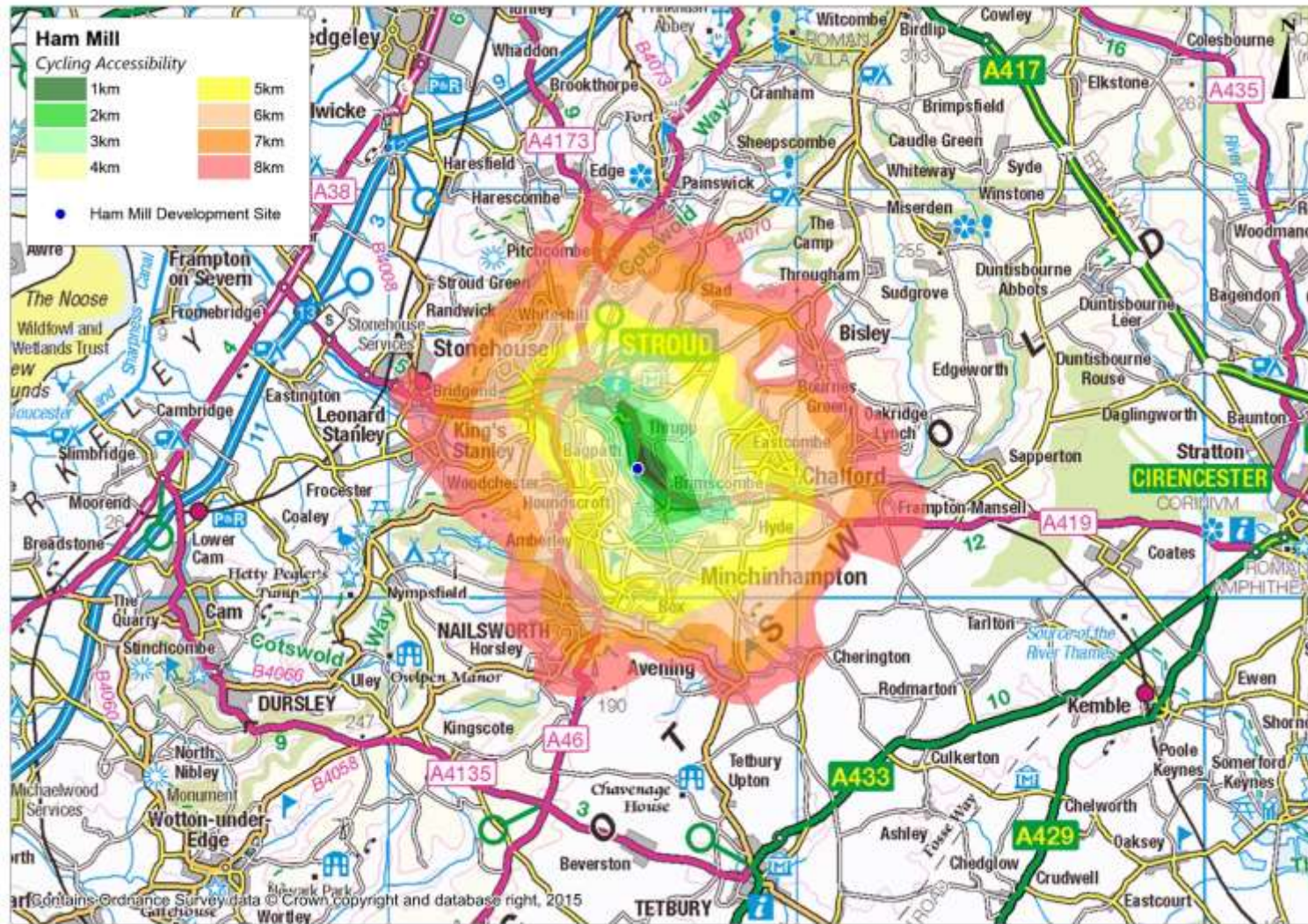


Figure 8.3c. Ham Mill, Pedestrian Transport Isochrones

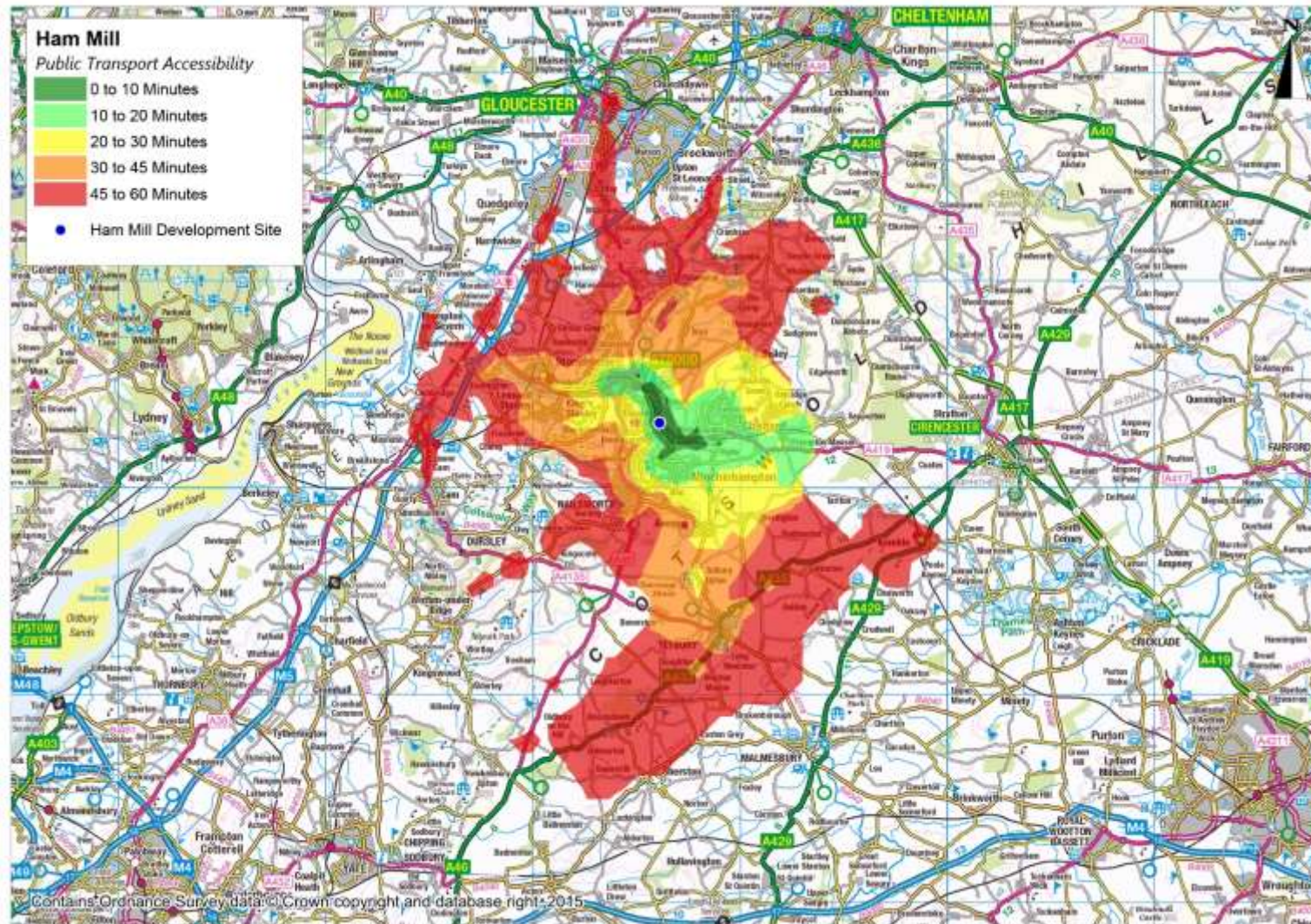


Figure 8.4a. Brimscombe Mill, Walking Isochrones

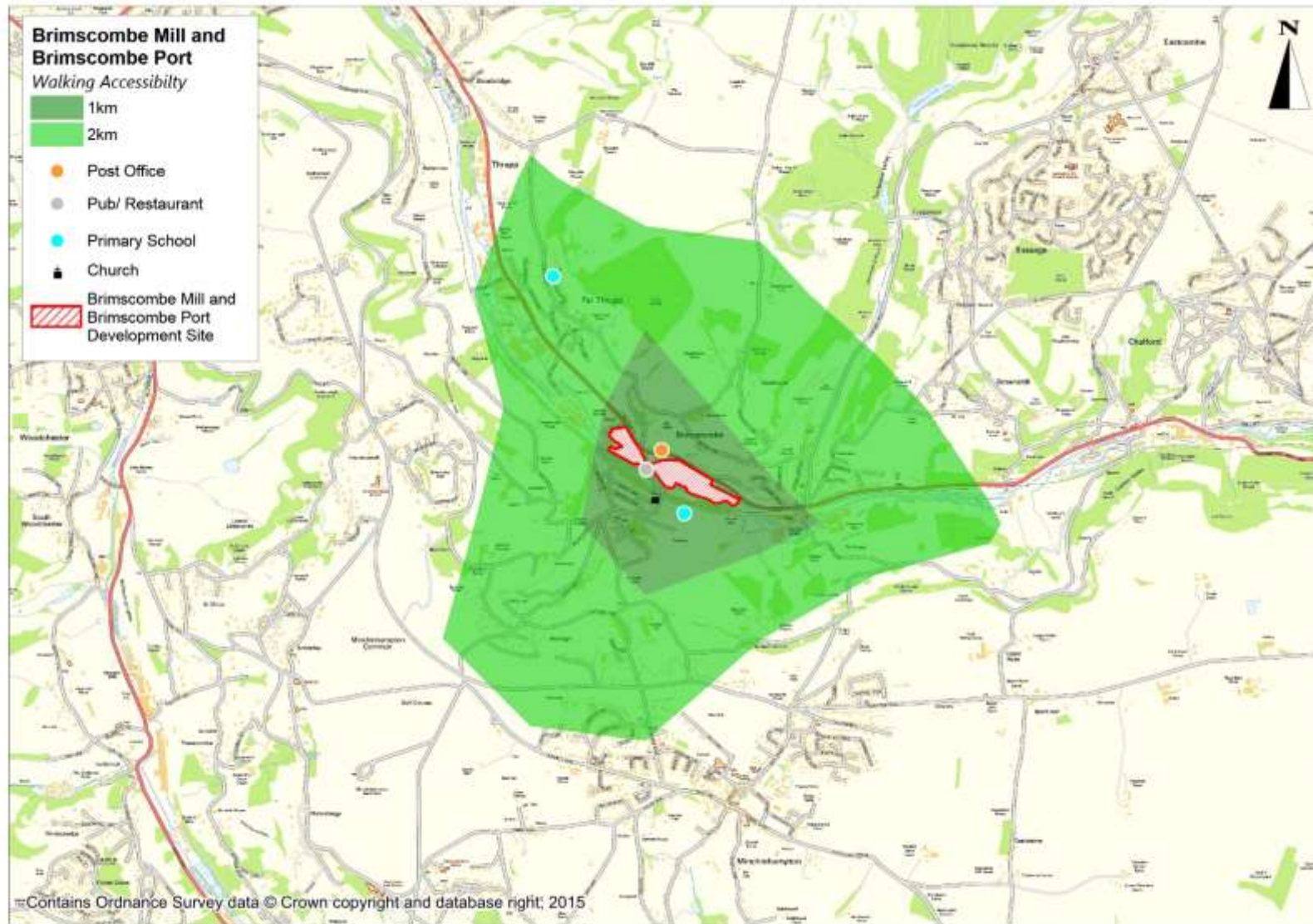


Figure 8.4b. Brimscombe Mill, Cycling Isochrones

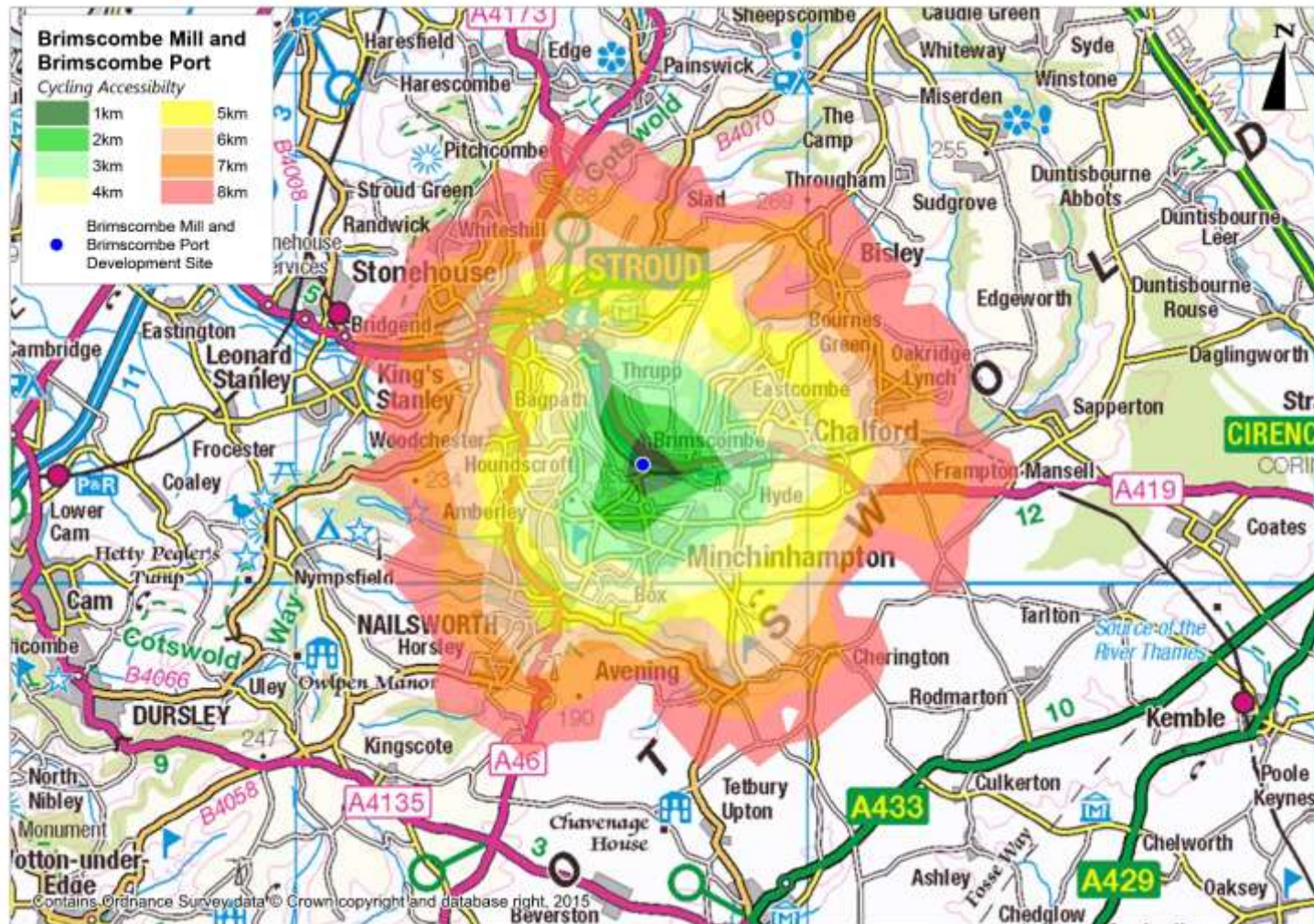


Figure 8.4c. Brimscombe Mill, Pedestrian Transport Isochrones

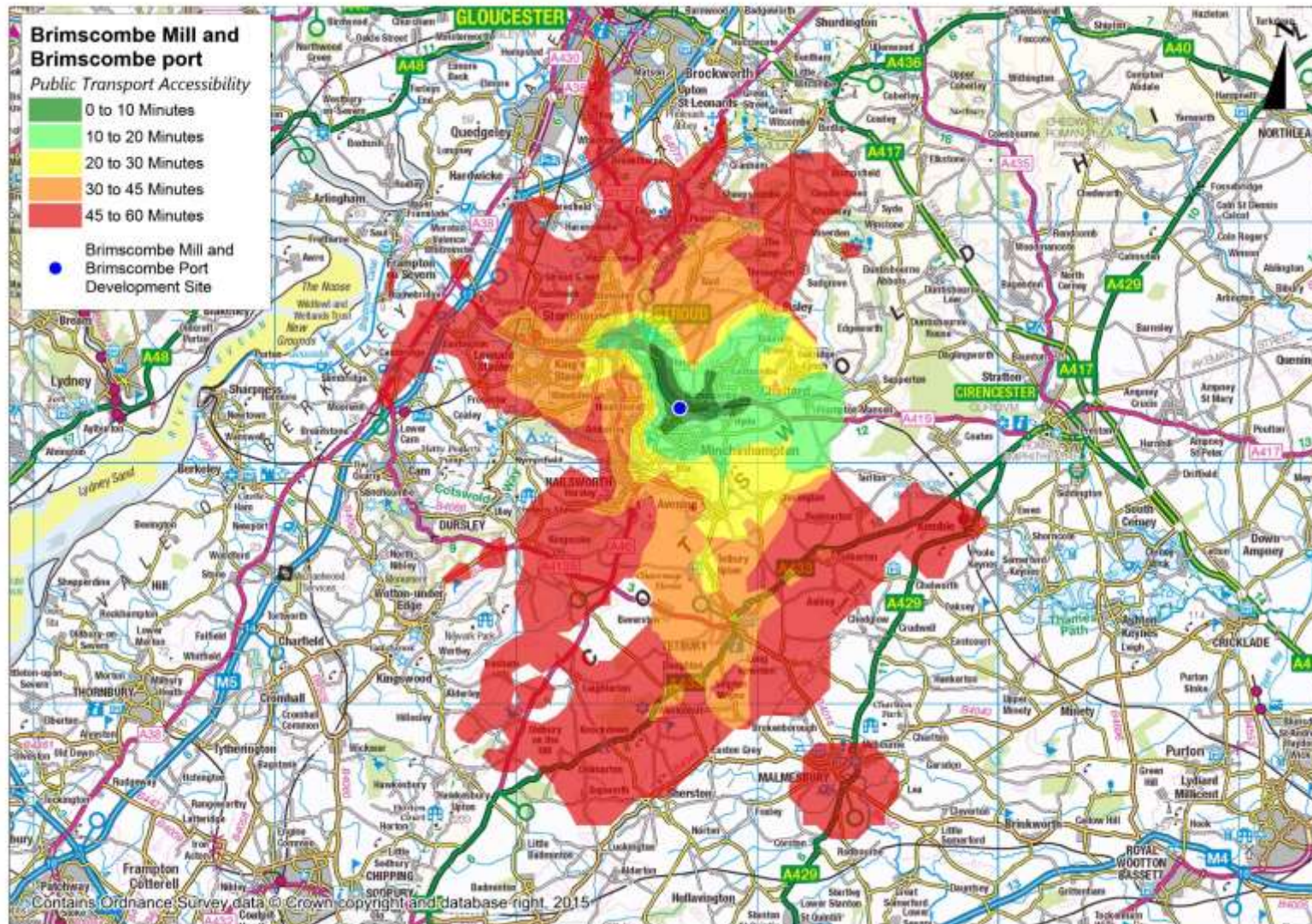


Figure 8.5a. Wimberley Mill, Walking Isochrones

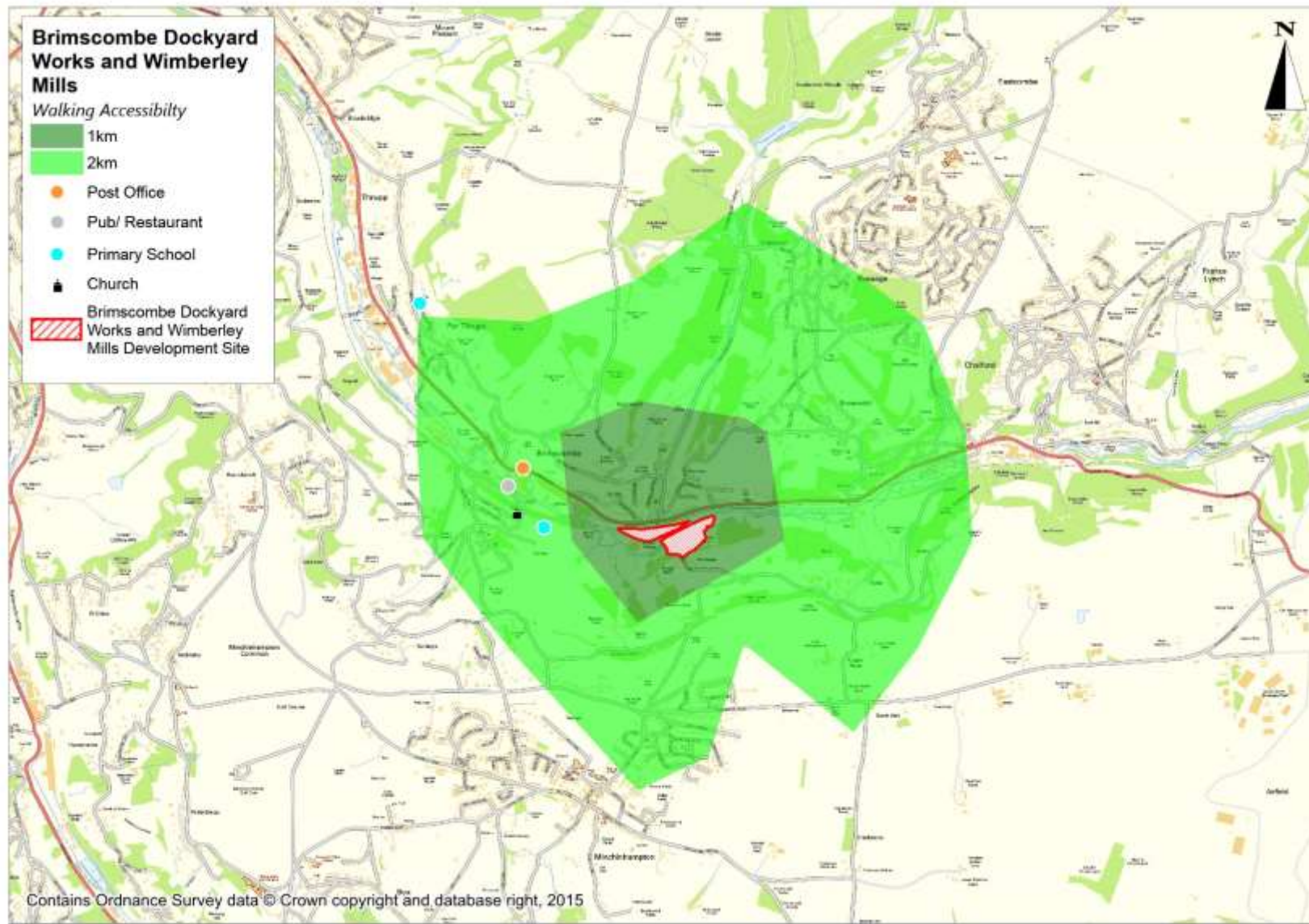


Figure 8.5b. Wimberley Mill, Cycling Isochrones

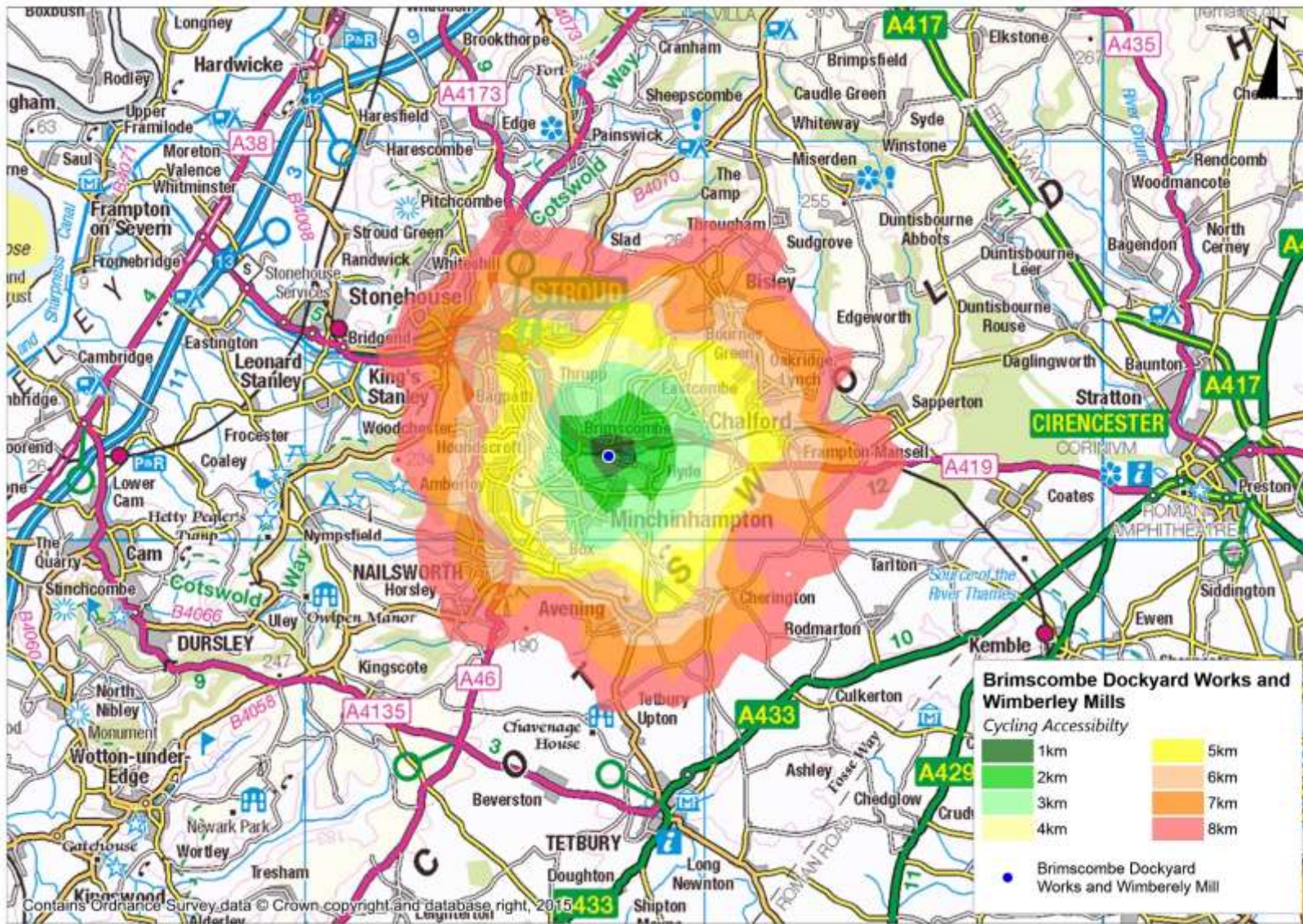
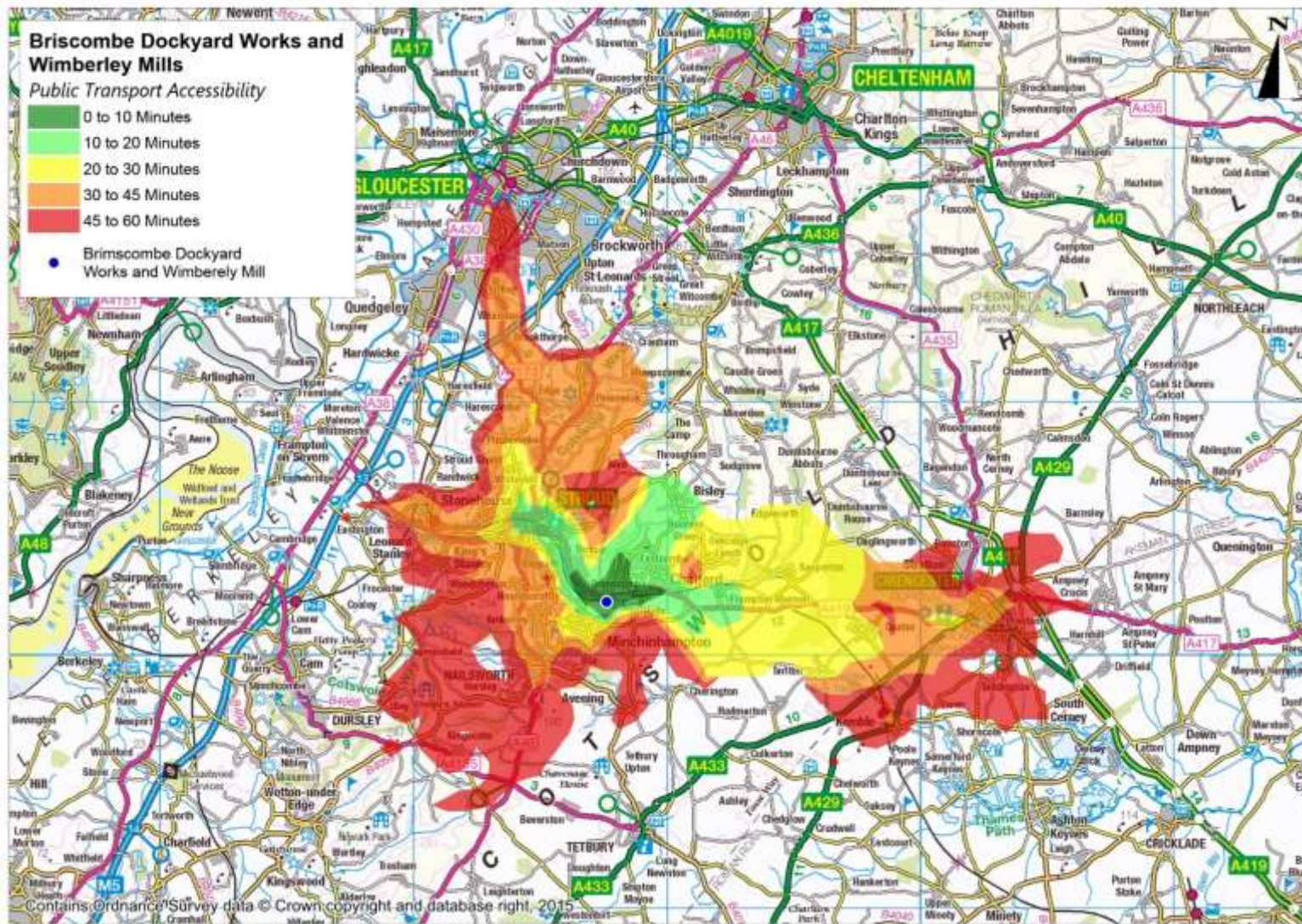


Figure 8.5c. Wimberley Mill, Public Transport Isochrones



Stonehouse

Figure 9a. Walking Isochrones

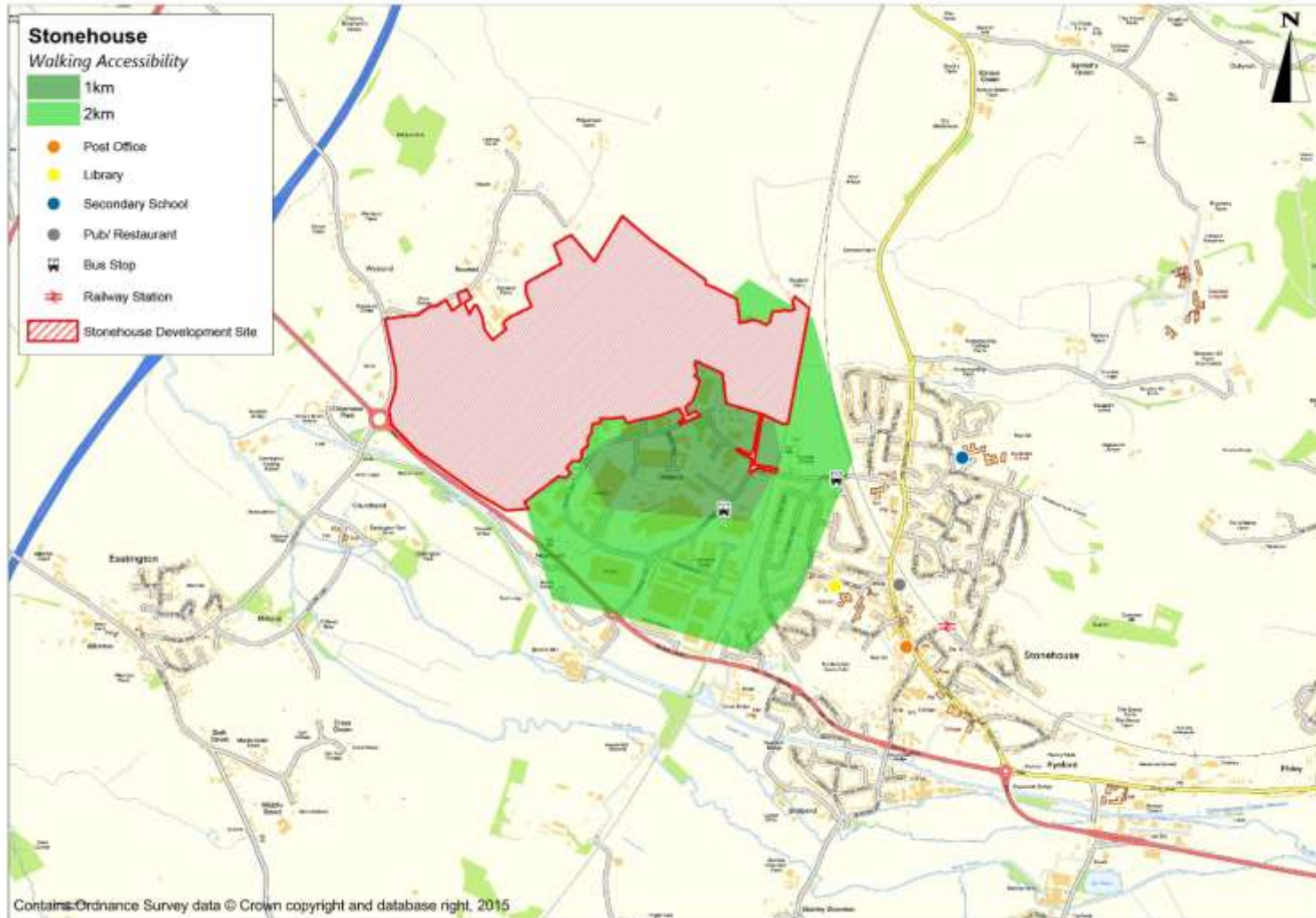


Figure 9b. Cycling Isochrones

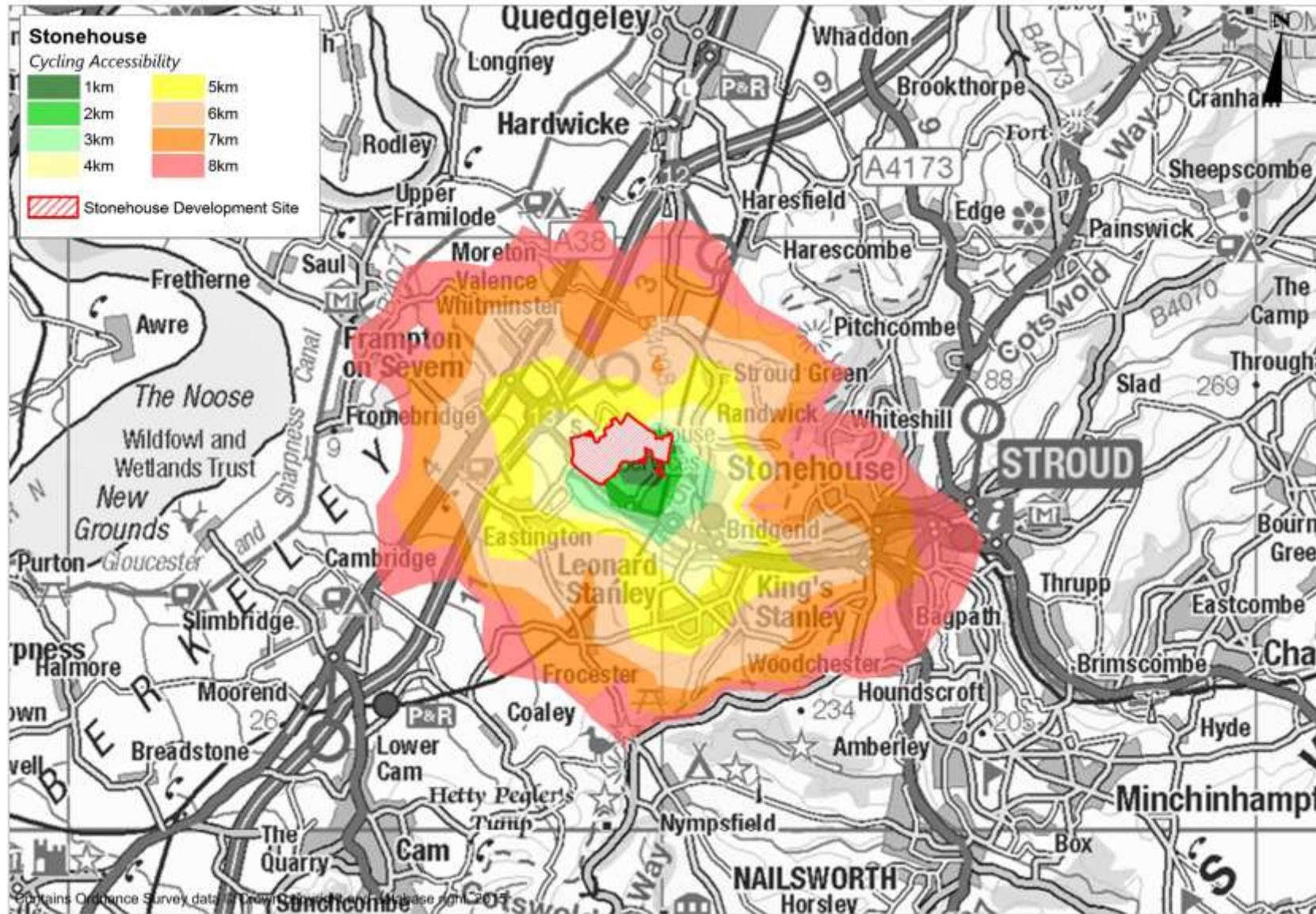
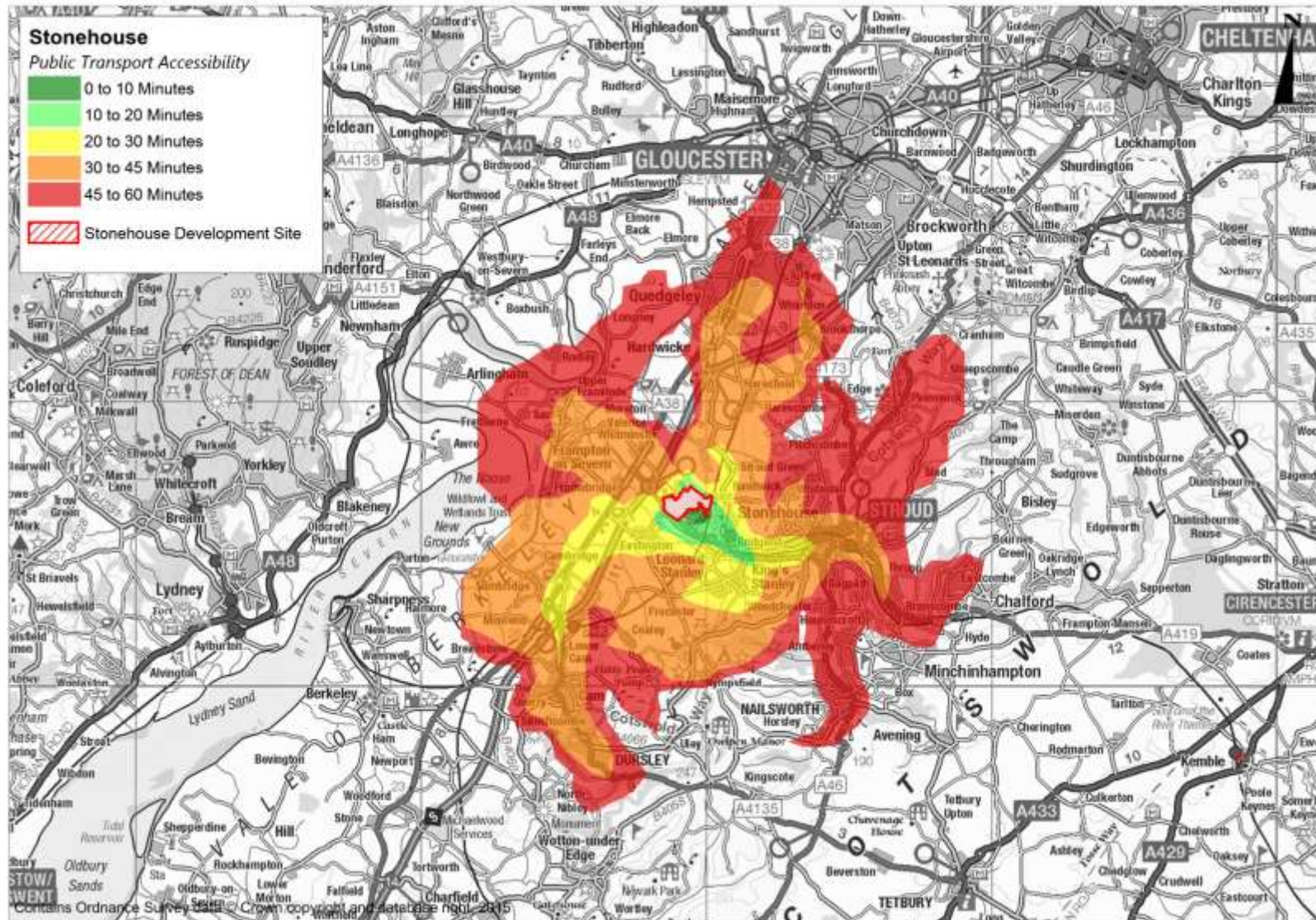


Figure 9c. Public Transport Isochrones



Tim Colles
Atkins
The Axis,
10 Holliday Street,
Birmingham
B1 1TF

Tim.Colles@atkingsglobal.com

© Atkins Ltd except where stated otherwise.

The Atkins logo, 'Carbon Critical Design' and the strapline
'Plan Design Enable' are trademarks of Atkins Ltd.