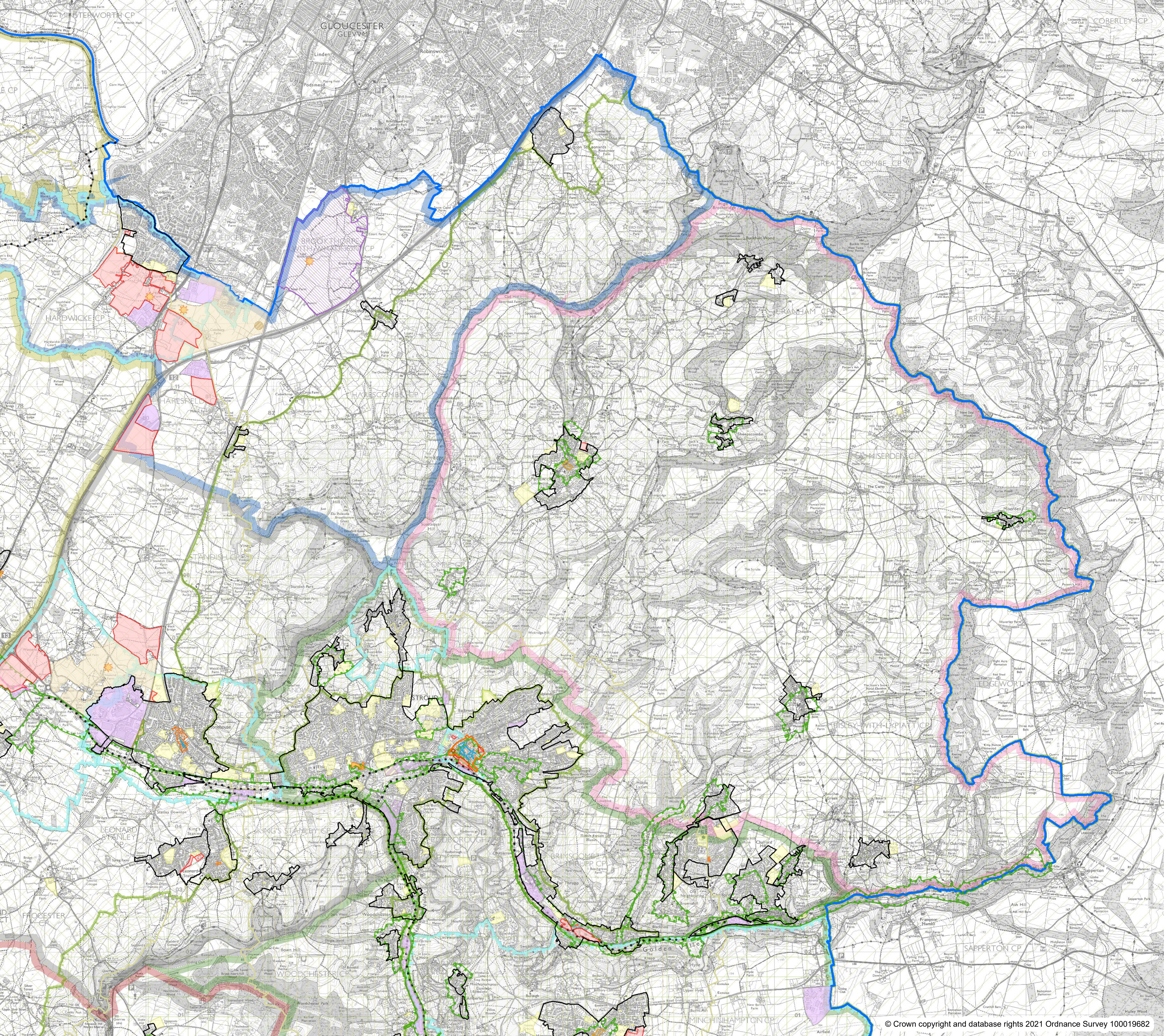


Stroud District | Local Plan Review

Submission Policies Map C (North/East)

October 2021

- Stroud District
- (CP3) Settlement Development Limits
- (CP2) Site Allocations ("PS" sites)
- (G2) Strategic Site Allocation (Safeguarded Land at Whaddon)
- (PS36a) Land safeguarded for Sharpness settlement (Phase 2, beyond 2040)
- (PS05a) Land safeguarded for future needs at Minchinhampton
- Ongoing Strategic Growth Areas (previous Plan allocations)
- (E11) Key Employment Sites ("EK" sites)
- (E12) Regenerating existing employment sites ("ER" sites)
- (E12a) Former Berkeley Power Station
- (E14) Land Safeguarded for Railway Facility
- (E14) Land Safeguarded for Railway Facility (Sharpness Branch)
- (E13) Existing walking and/or cycling routes
- (E13) Proposed walking and/or cycling routes
- Sharpness Docks North (PS34)
- Sharpness Docks South (PS34)
- Sharpness Docks Expansion Land (PS34)
- Sharpness Docks Estate (PS34)
- (CP12, E17) Primary Shopping Areas
- (CP12, E18, E19) Principal Town Centre (Stroud)
- (CP12, E18, E19) Other Town Centres
- (CP12, E18, E19) District Centres
- (CP12, E18, E19) Local Centres
- (CP12, E18, E19) Neighbourhood Shopping
- (CP12, E19) New Local Centres (anticipated)
- (DHC7) Protected Outdoor Play Space
- (ES6) Cotswolds Beechwoods SAC core catchment zone
- (ES6) Rodborough Common SAC core catchment zone
- (ES6) Severn Estuary SAC SPA Ramsar core catchment zone
- (ES7) Cotswolds Area of Outstanding Natural Beauty (AONB)
- (ES10) Conservation Areas
- (ES11) Cotswold Canals restoration: the 'Missing Mile' (indicative)
- Waste Core Strategy allocations
- Neighbourhood Plan (NDP) Areas (at October 2021)
- (CP4) Making Places: The Stroud Valleys
- (CP4) Making Places: The Stonehouse cluster
- (CP4) Making Places: Cam and Dursley
- (CP4) Making Places: Gloucester's Rural Fringe
- (CP4) Making Places: The Berkeley cluster
- (CP4) Making Places: The Wotton cluster
- (CP4) Making Places: The Severn Vale
- (CP4) Making Places: The Cotswolds



www.stroud.gov.uk/localplanreview

