

3

In developing a Local Plan for the District, it is important to have a vision of the kind of place we want to be living in, working in or visiting in the future. This chapter takes a closer look at the opportunities, needs, priorities and distinct characteristics of different parts of the District, and how particular places are likely to be affected by strategic growth.



©Nick Turner





3. Making Places | Shaping the future of Stroud District

- 3.0 A spatial vision for Stroud District
- 3.1 ● The Stroud Valleys
- 3.2 ● The Stonehouse cluster
- 3.3 ● Cam & Dursley
- 3.4 ● Gloucester's rural fringe
- 3.5 ● The Berkeley cluster
- 3.6 ● The Severn Vale
- 3.7 ● The Wotton cluster
- 3.8 ● The Cotswold cluster







3.0 Making Places | a spatial vision for Stroud District

- 3.0.1 The Local Plan is founded on an over-arching vision for the District as a whole, which is a cornerstone of the development strategy, and is set out in **Chapter 2**.
- 3.0.2 Derived from this, **Chapter 3 | Making Places** sets out a spatial vision which consists of a series of eight place-making ‘mini visions’ for distinct parts of the District. Using facts and figures gathered about all the District’s parishes, together with outcomes from public consultation, the spatial vision aims to focus the over-arching goals of the main vision and the strategic objectives in a way that responds more specifically to local priorities, issues and needs.
- 3.0.3 Whilst some places in the District have a need for development or are suited to strategic levels of growth, others are not. The spatial vision identifies areas that are likely to see significant changes; and areas that will not. It pictures what the various levels of change or growth could mean for the District’s diverse

communities, settlements and landscapes. It sets out the envisaged and desired effects that the development strategy should have on particular parts of the district, including information about the proposed strategic growth areas and local sites, the kind of development that could happen at each place and how this is intended to help achieve the overall vision for the District’s future.

- 3.0.4 The Plan’s spatial vision for the District (and the eight ‘mini visions’ that feed into it) is illustrated in the **Spatial Vision Diagram (Map 3)** (over the page). Over subsequent pages, eight ‘mini visions’ for eight parish cluster areas are set out in detail.
- 3.0.5 **Core Policy CP4 (Chapter 2 | Development Strategy)** emphasises that the Local Plan visions underpin the Plan’s development strategy.

‘Parish clusters’

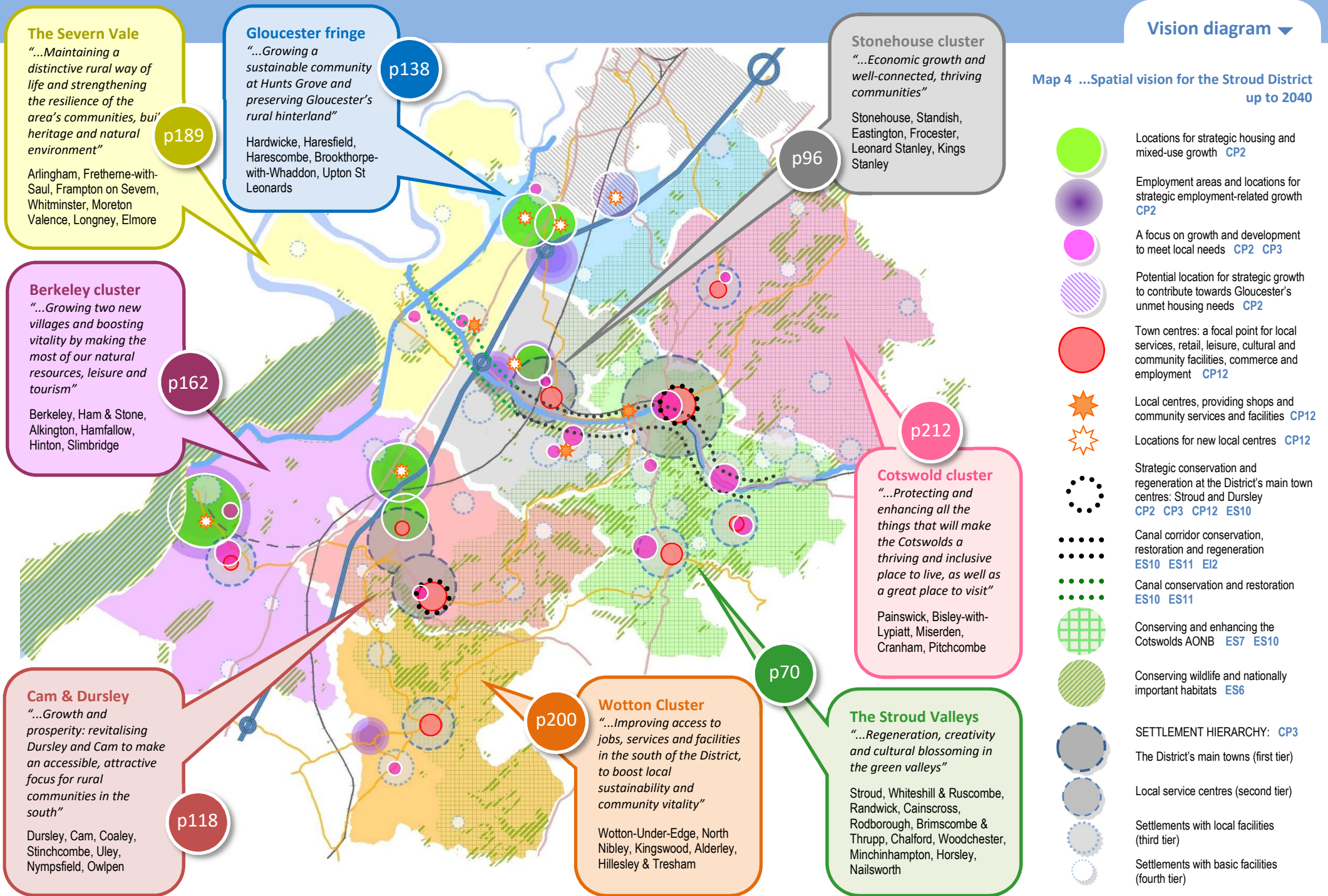
- 3.0.6 The ‘parish clusters’ that appear throughout this Plan originated with the drafting of the **2015 Local Plan**. By grouping parishes that share some geographic and functional similarities, we have been able to build up a picture of the particular needs and opportunities that most concern different parts of the District.

Our towns and villages

- 3.0.7 Preparation of the Local Plan’s **development strategy** and **settlement hierarchy** has involved studying the main towns and villages in the District, to identify their current roles and functions and understand future needs. The following pages summarise some of the key findings from this work, to establish a **development strategy** for each individual settlement. **Core Policy CP3 (Chapter 2 | Development Strategy)** explains the implications of the settlement hierarchy.

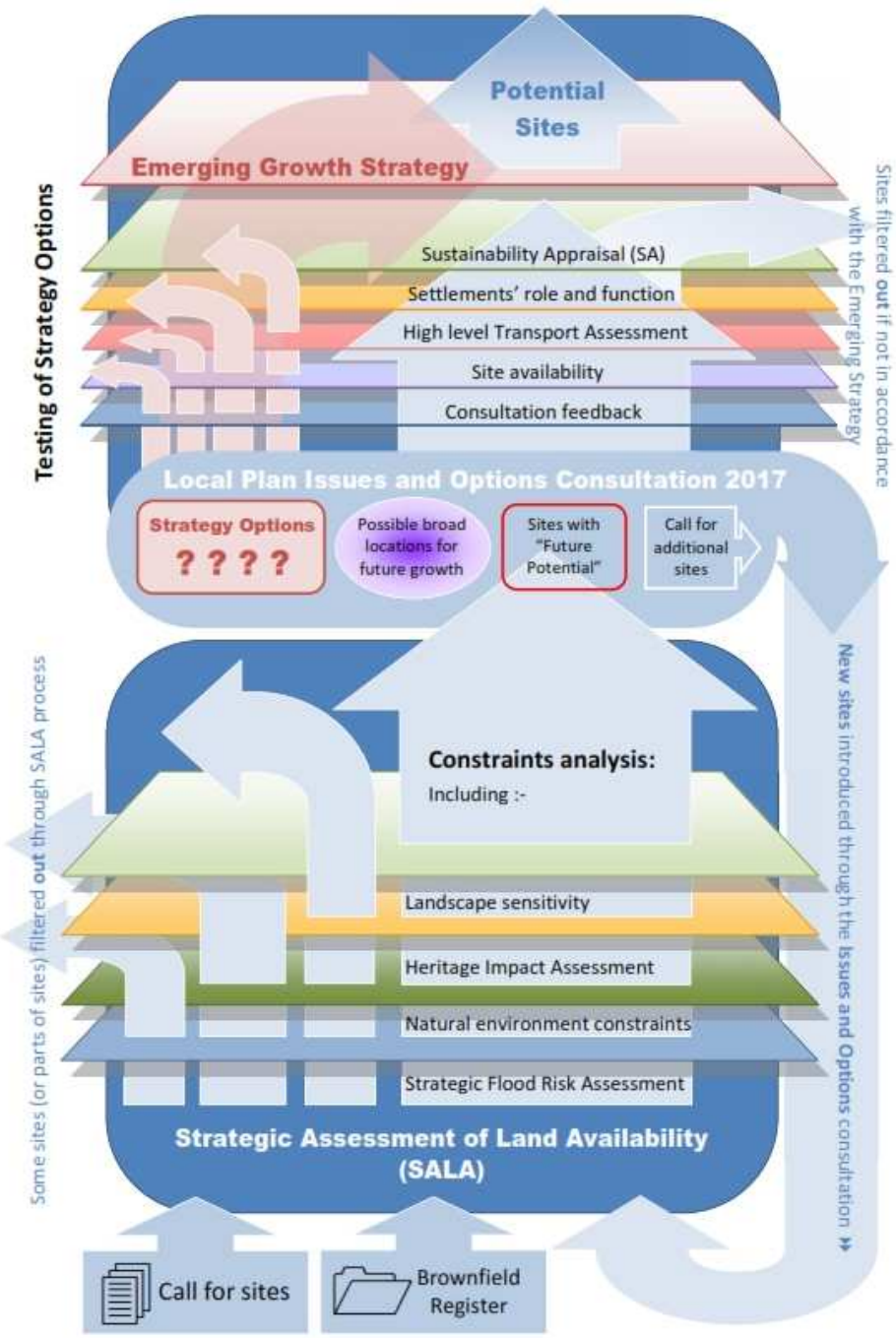


Map 4 ...Spatial vision for the Stroud District up to 2040



The development strategy and proposed site allocations | what this means for where you live

- 3.0.8 The settlement summaries set out in this chapter identify the location, scale and extent of any site allocations that would affect individual settlements. Some site allocations are 'strategic' in scale and nature; some are intended to meet smaller scale local need, with a focus on enhancing or delivering new services and facilities to support settlements' role and function. More information on what the development strategy means for where you live is set out in **Chapter 2**.
- 3.0.9 The diagram on the left summarises the process through which all potential sites have been filtered, alongside the emergence of the preferred development strategy that is now set out in this Local Plan.



◀ Fig.4 How all potential sites have been appraised ...

Where can I see the evidence behind the site assessments and development strategy? ▼

You can find links to our Strategic Assessment of Land Availability (SALA) and the technical studies that supported it, plus the Settlement Role and Function Study and the Sustainability Appraisal, on our Local Plan Review web page: www.stroud.gov.uk/localplanreview

